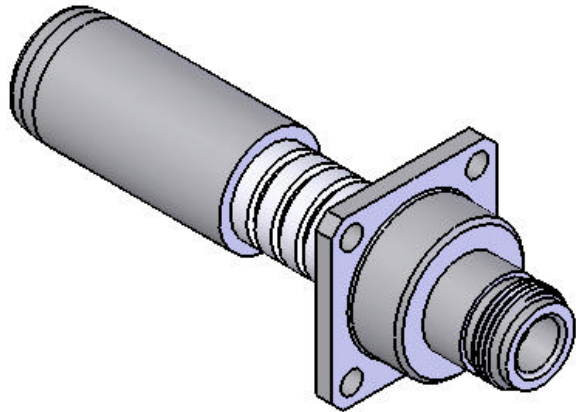


This document, including the design, configuration and mechanical features revealed herein are the sole, confidential and proprietary property of TRU Corporation. Reproduction or use thereof, in whole or part, is prohibited without the prior written consent of TRU Corporation.

REV.	DESCRIPTION	DATE	APPROVED
-	ORIGINAL ISSUE	03/13/09	AM



ENGINEERING DATA

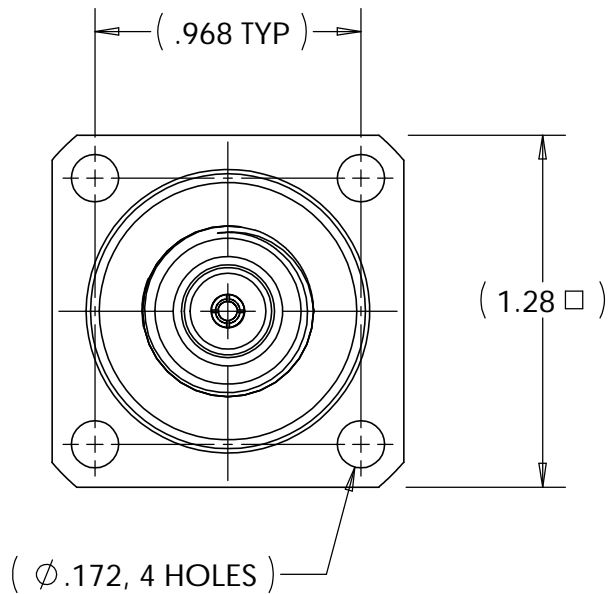
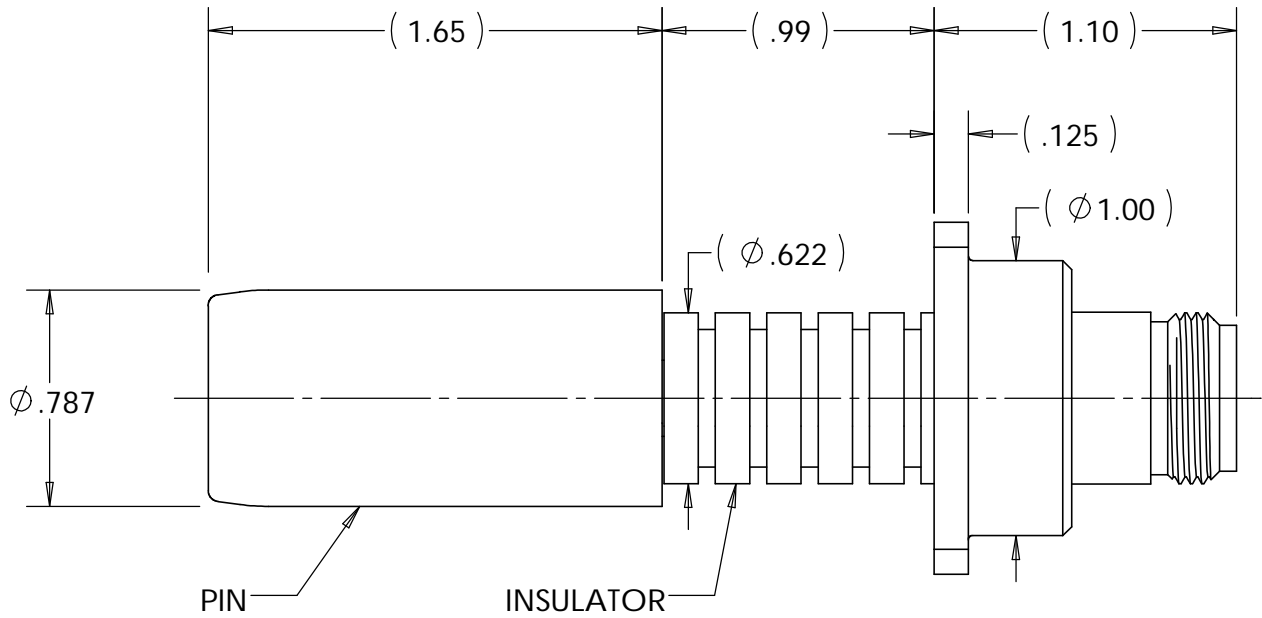
MECHANICAL:
INTERFACE: N(f) PER MIL-STD-348 FIG.304.2


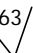
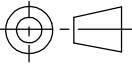
MATERIAL:
CONTACT: BERYLLIUM COPPER
PIN: BRASS
HOUSING: BRASS
INSULATOR: PTFE

FINISH:
CONTACT & PIN: SILVER PLATED
HOUSING: NICKEL PLATED

NOTES:

1. UNLESS OTHERWISE SPECIFIED; ALL DIMENSIONS ARE FOR REFERENCE ONLY.



MATERIAL	DO NOT SCALE DRAWING	DRAWN AM	DATE 03/13/09	 TRU CORPORATION 245 LYNNFIELD STREET, PEABODY, MA 01960 <i>The Custom Interconnect Leader™</i>		
		ENG APPR. AM	DATE 03/13/09			
		MFG APPR.	DATE			
		OTHER APPR.	DATE	TITLE: CONNECTOR, COAXIAL N(f) PANEL RECEPTACLE		
COMMENTS:	UNLESS OTHERWISE SPECIFIED: DIMENSIONS ARE IN INCHES TOLERANCES: FRACTIONS: $\pm 1/64$.XX : $\pm .01$.XXX: $\pm .005$ ANGLES: $\pm 1/2^\circ$ MACHINED SURFACES: 63/ 	THIRD ANGLE PROJECTION 		SIZE B	DWG. NO. TRU-11321	REV -
surface area: sq inch				CAGE CODE: 92180		SCALE: 3:2
weight: 0.43 lbs				SHEET 1 OF 1		