



# OL10KRTHD | SMART APP ONLINE UPS SYSTEM

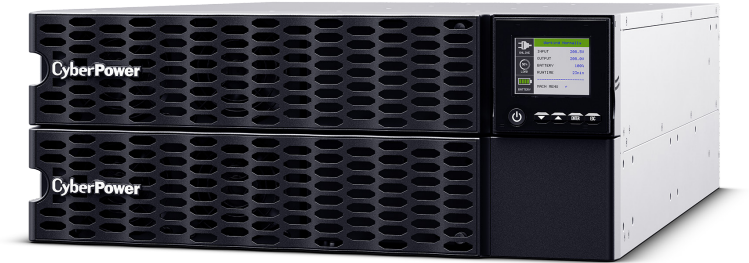
Safeguard mission-critical servers, applications, and network equipment with this space saving design and double-conversion power protection

The CyberPower Smart App Online OL10KRTHD high-density design offers more power in less space. In fact, it can be configured into 4U of rack space or as a tower, compared to 6U for similar competitive UPS models – giving you more room to grow. The OL10KRTHD features double-conversion topology for seamless power protection and a pre-installed RMCARD205.

For monitoring, this UPS offers a new state-of-the-art, multi-function, color matrix LCD screen that is simple to set up and easy to use. The color-coded alerts provide clear status of the UPS and the screen orientation rotates automatically when placed into a tower configuration.

The OL10KRTHD ensures maximum efficiency and capacity output with a Power Factor rating (PF) of one. The energy-saving GreenPower UPS™ ECO Mode enables > 98% efficiency while reducing power consumption and thermal dissipation. The variable seven-speed fan provides automatic thermal management, based on power load, to reduce noise.

The optional BP192VL2U01 Extended Battery Module (EBM) expands runtime and up to ten EBM's can be connected in a daisy-chain to the UPS for more backup power. Plus, it's all backed by a three-year warranty (including batteries) and a \$300,000 Connected Equipment Guarantee.



## TYPICAL APPLICATIONS

- Core Network Equipment
- Hyperconverged Infrastructure (HCI)
- Server Rooms
- Server Virtualization Infrastructures
- Storage Systems
- VoIP Infrastructure
- Enterprise Servers
- Corporate Servers

## FEATURES

- Capacity: 10,000 VA / 10,000 W
- High Density: 4U Size
- Power Factor (PF): 1
- Topology: Double-Conversion
- Waveform: Sine Wave
- Output: 200, 208, 220, 230, 240 VAC  
User Configurable +/-2%
- Plug type: Hardwire
- Outlet types: 4 x NEMA L6-20R,  
2 x NEMA L6-30R, Hardwire
- Communication Ports: USB, Serial, SNMP, EPO
- Management Software: PowerPanel® Business Edition
- Energy Saving: ECO Mode Efficiency >98%
- Warranty: Three-Year Limited

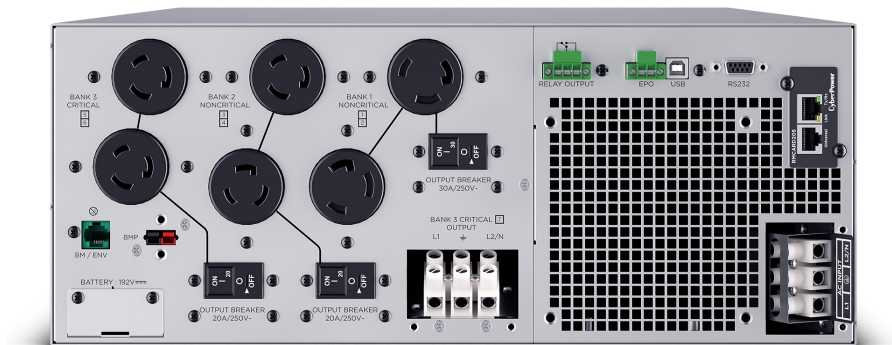
## GENERAL

Energy Saving	ECO Mode Efficiency > 98%
Energy Star Certified	Yes
UPS Topology	Online Double Conversion

## INPUT

Backfeed Protection	Yes
Circuit Breaker	70 A
Cold Start	Yes
Input Frequency Range	40 Hz to 70 Hz

# OL10KRTHD | SMART APP ONLINE UPS SYSTEM



## SPECIFICATIONS - CONT.

INPUT CONT.	
Input Plug Type	Hardwire
Input Power Factor	0.99
Input Voltage Range	120 VAC - 139 VAC for 0-25% Load 140 VAC - 159 VAC for 0-50% Load 160 VAC - 179 VAC for 0-75% Load 180 VAC - 280 VAC for 0-100% Load
Nominal Input Voltage	200 - 240 VAC
OUTPUT	
Bypass	Internal Bypass (Automatic and Manual)
Crest Factor	3:1
ECO Mode Voltage Regulation	+/-10%, +/-15% (configurable)
Harmonic Distortion	<3% at Linear Load, <5% at Non-Linear Load
On Battery Frequency	50/60 Hz +/-0.25 Hz (auto-sensing or configurable)
On Battery Voltage	200 / 208 / 220 / 230 / 240 VAC +/-2% (configurable)
On Battery Waveform	Sine Wave
Outlet Type	4 x NEMA L6-20R 2 x NEMA L6-30R 1 x Hardwire Terminal Block
Outlets - Total	6
Output Power Factor	1
Short Circuit Protection	UPS Output Cutoff Immediately Input Fuse / Circuit Breaker Protection
Transfer Time	0 ms
VA	10,000 VA
Watts	10,000 W

SURGE PROTECTION & FILTERING	
EMI/RFI Filtration	Yes
Surge Suppression	2430 J
BATTERY	
Battery Equalization Technology	Yes
Battery Quantity	16
Battery Size	12 V / 9 Ah
Battery Type	Sealed Lead Acid
Extended Battery Module	BP192VL2U01
Field Serviceable Battery	Replaceable by qualified technician
Hot-Swappable	Yes
Replacement Battery Cartridge	2 x RB1290X8
Runtime at Full Load	2.4 min
Runtime at Half Load	8.3 min
Smart Battery Management (SBM) Mode	Yes
Typical Recharge Time	4 Hours (0% to 90% charged)
ENVIRONMENTAL	
Audible noise at 1m from surface of unit	35 dBA to 66 dBA (0% to 100% load)
Online Thermal Dissipation	2025 BTU/hr
Operating Elevation	0 ft to 10,000 ft (0 to 3,048 m)
Operating Relative Humidity	0% to 90% non-condensing
Operating Temperature	32 °F to 104 °F (0 °C to 40 °C)
Storage Elevation	0 ft to 50,000 ft (0 m to 15,239 m)
Storage Relative Humidity	0% to 95% non-condensing
Storage Temperature	-4 °F to 113 °F (-20 °C to 45 °C)

OL10KRTHD | SMART APP  
ONLINE UPS SYSTEM

SPECIFICATIONS - CONT.

MANAGEMENT & COMMUNICATION	
Audible Alarms	Battery Mode Battery Low Overload UPS Fault
Dry Contacts	No
Emergency Power Off (EPO) Port	Yes
HID Compliant USB Port	Yes
LCD	Multifunction LCD
LED Indicators	Power On (White)
Management Cable	USB Cable
Removable LCD Control Panel Option	No
Rotatable LCD Control Panel Option	Yes
Serial Port	1 Serial
SNMP / HTTP Remote Monitoring	Yes - RMCARD205 pre-installed
Software (Free Download)	PowerPanel® Business Edition

PHYSICAL	
Chassis Color	Unpainted
Form Factor	Rack / Tower
Front Panel Color	Black
Material of Construction	Metal
Mounting Hardware	Yes

PHYSICAL DIMENSIONS	
Physical Dimensions - Width/Height/Depth (cm)	43.31 x 17.27 x 72.01 cm
Physical Dimensions - Width/Height/Depth (mm)	433 x 173 x 720 mm
Physical Dimensions - Width/Height/Depth (in.)	17.05 x 6.8 x 28.35 in.
Weight (kg)	71.21 kg
Weight (lb)	157 lbs.

SHIPPING DIMENSIONS	
Shipping Dimensions - Width/Height/Depth (cm)	59.0 x 45.21 x 89 cm
Shipping Dimensions - Width/Height/Depth (mm)	590.04 x 452.12 x 890.02 mm
Shipping Dimensions - Width/Height/Depth (in.)	23.23 x 17.8 x 35.04 in.
Shipping Weight (kg)	90.72 kg
Shipping Weight (lbs.)	200 lbs.

CERTIFICATIONS	
Safety	UL1778 CSA C22.2 No.107.3 FCC Part 15 Class A
Environmental	RoHS Compliant

WARRANTY	
CEG Amount	\$300,000
Connected Equipment Guarantee	Lifetime
Extended Warranty Option	WEXT5YR-U20B
Product Warranty	3-Year Limited