

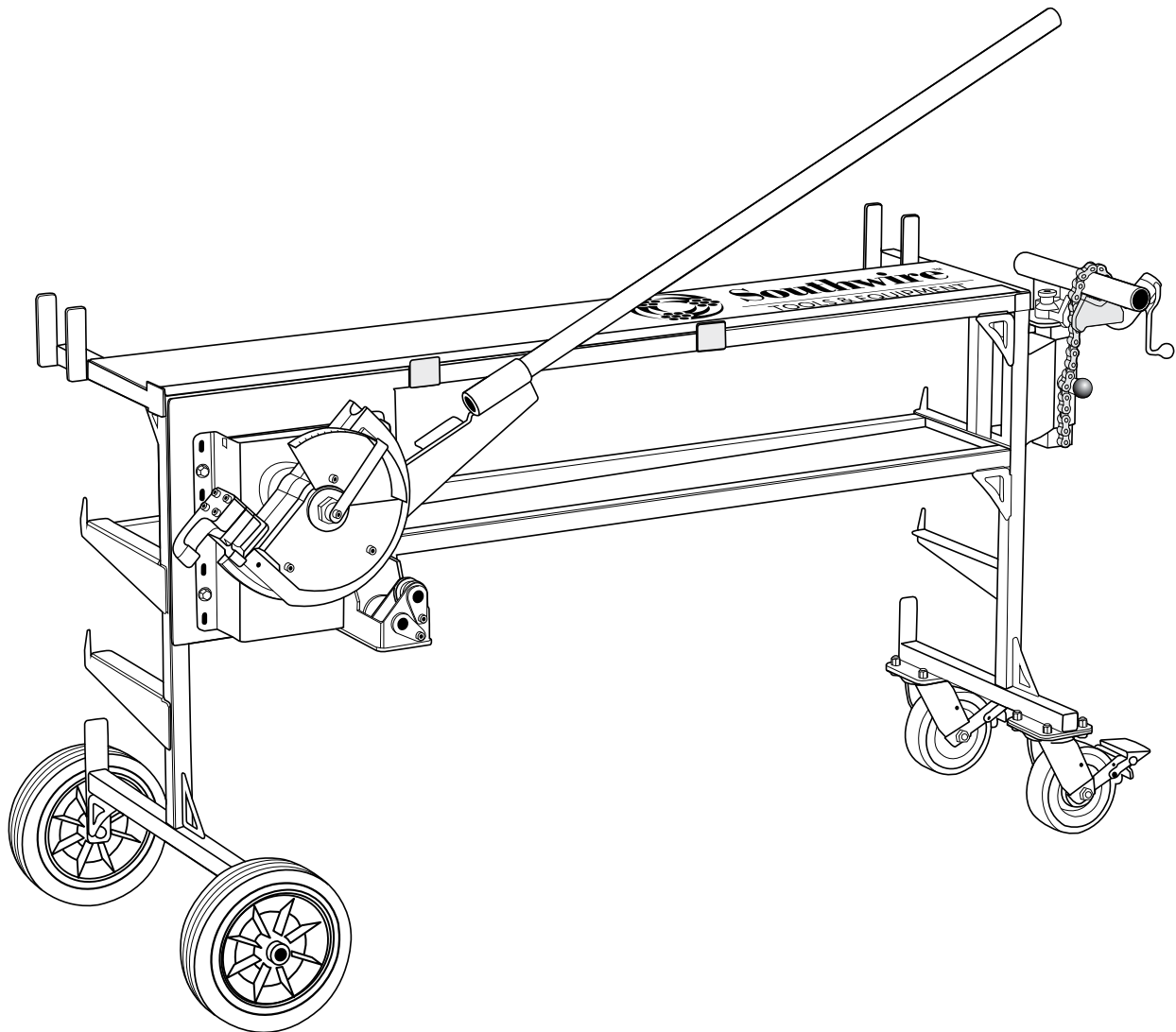


Southwire™

TOOLS & EQUIPMENT

Operating Instructions

BENDstation™ RIGID Workstation (RB-1000)



**Read and understand all of the instructions and safety information
in this manual before operating or servicing this tool.**



FAILURE TO OBSERVE THESE WARNINGS CAN RESULT IN SEVERE INJURY OR DEATH.

BENDstation™ RIGID Workstation

Comprehensive Conduit Bending Workstation for 3/4" and 1" Rigid and IMC

STORE

- Storage Shelf
- Easy access conduit rack
- Store up to 700' of conduit

MEASURE

- Table top 60" ruler
- Conduit stop to hold and measure bent conduit

BEND

- Elevated bending shoe
- Ratchet System
- Protractor built in

CUT/THREAD

- Built in chain vise
- Holds conduit secure

 **BEFORE OPERATING THIS TOOL,** 
**READ AND UNDERSTAND ALL OF THE
INSTRUCTIONS AND SAFETY
INFORMATION IN THIS MANUAL**

TABLE OF CONTENTS

Description.....	2
Safety.....	2-3
Important Safety Information.....	2-3
Purpose of this Manual.....	4
Identification.....	4
Setup.....	5
Operation.....	6-7
Chain Vise for Cutting and Threading.....	8
Calibrating Protractor.....	9
Maintenance.....	9
Exploded Diagram.....	10
Parts List.....	10
Specifications.....	11
Warranty.....	11-12


DESCRIPTION

This **BENDstation™ RIGID Workstation** is a mobile bending platform used for bending and working with rigid and IMC conduit in **3/4"** and **1"** trade sizes. It is non-powered and utilizes a ratcheting shoe with sufficient leverage for an average-sized operator to easily bend conduit. The bender unit is mounted to a workstation allowing for an ergonomic working height.

The **BENDstation™ RIGID Workstation** includes the functionality of bending, measuring, storage, as well as clamping for cutting and threading of conduit. The **BENDstation™ RIGID Workstation** is mounted on casters and wheels for easy maneuverability.

SAFETY

Safety is essential in the use and maintenance of Southwire Tools and Equipment. This instruction manual and any markings on the tool provide information for avoiding hazards and unsafe practices related to the use of this tool. Observe all of the safety information provided.

 **WARNING:** Read and understand all instructions and safety information in this manual before operating or servicing this tool.

 **WARNING:** Personal Safety Hazards.

- Only qualified persons should use a **BENDstation™ RIGID Workstation**.
- Wear eye protection and a hard hat when using this tool.
- Do not use tool while tired or under the influence of drugs, alcohol, or medication.
- Keep body parts and loose clothing away from moving parts.
- Keep hands clear of bending shoe when moving handle.
- Keep all body parts clear of handle's path when tool is not in storage position.
- When using this tool, always follow the safety procedures set forth in this manual as well as all other safety procedures necessary and proper when using tools of this type.

SAFETY

WARNING: Tool Use Hazards.

- Use this tool for manufacturer's intended purpose only. Any use other than described in this manual can result in injury or property damage.
- Only qualified persons should use a **BENDstation™ RIGID Workstation.**

FAILURE TO OBSERVE THESE WARNINGS CAN RESULT IN SEVERE INJURY OR DEATH.

WARNING: Max Load.

- Do not store more than 700 feet of **3/4"** and/or **1"** IMC or Rigid conduit or 1000 lbs. of other materials on **BENDstation™ RIGID Workstation.**

WARNING: Flying Debris.

- Wear eye protection when using this bender. Failure to wear eye protection could result in serious eye injury from flying debris while bending, cutting or threading.

CAUTION: Flying Debris.

- Keep the conduit under control when unloading it from the bender. Conduit may fall and strike the operator or nearby personnel.
- Maintain a firm grip on the handle when bending. Spring back of the conduit may not allow the ratchet to fully engage, causing the handle to spring upward suddenly.
- Inspect the bender before each use. Replace any worn, damaged, or missing items with Southwire replacement parts. A damaged or improperly assembled tool can break and strike nearby personnel.

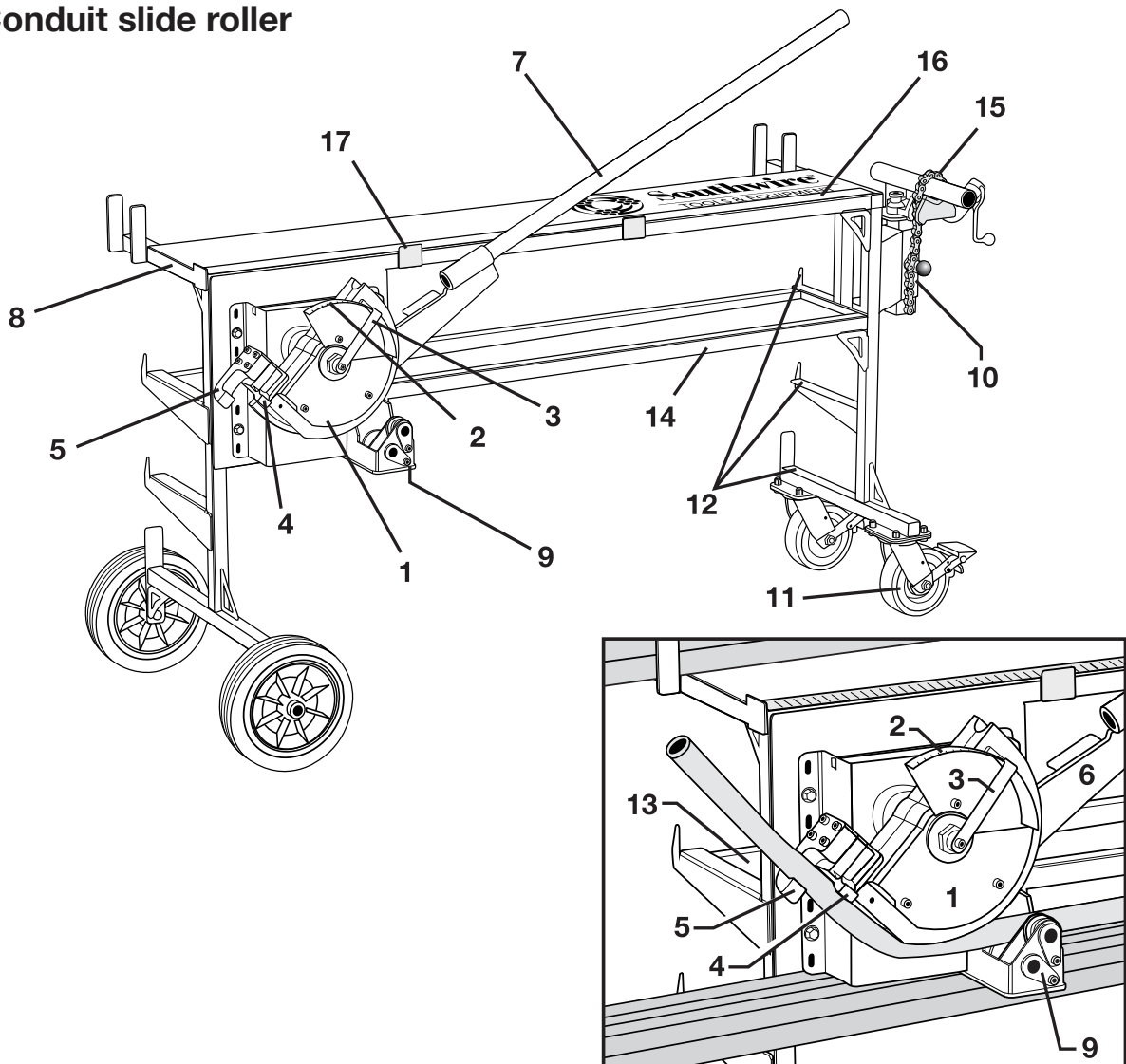
FAILURE TO OBSERVE THESE WARNINGS CAN RESULT IN SEVERE INJURY OR DEATH.

PURPOSE OF THIS MANUAL

This instruction manual is intended to familiarize personnel with the safe operation for the Southwire **BENDstation™ RIGID Workstation**. Keep this manual available to all personnel. Replacement manuals are available upon request at no charge at www.southwiretools.com

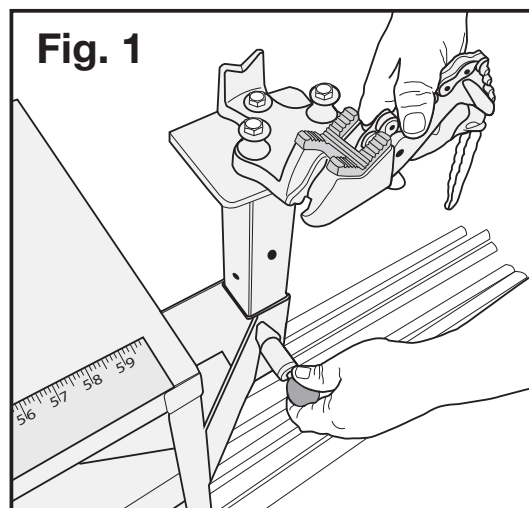
IDENTIFICATION

- | | |
|----------------------------------|----------------------------|
| 1. Dual bending shoe 3/4" and 1" | 10. Strut cutting holder |
| 2. Protractor | 11. Locking swivel casters |
| 3. Protractor pointer | 12. Conduit shelves |
| 4. 3/4" Conduit hook | 13. Storage shelf |
| 5. 1" Conduit hook | 14. Handle stop |
| 6. Ratchet handle receiver | 15. Chain vise |
| 7. Bending handle | 16. 60" ruler |
| 8. Conduit stop | 17. Ratchet release tab |
| 9. Conduit slide roller | |

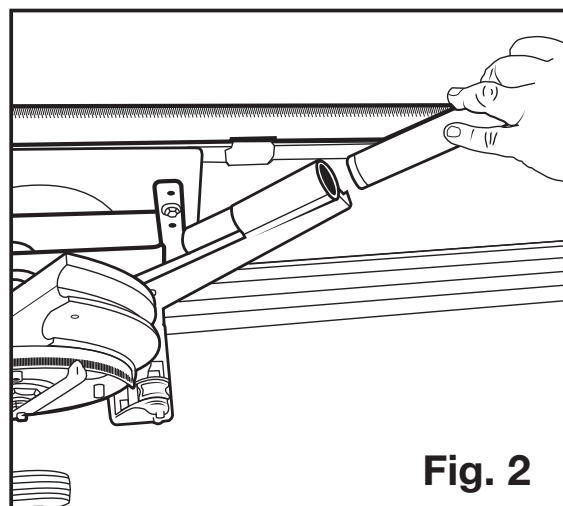


SETUP

1. Park the **BENDstation™ RIGID Workstation** on a flat, firm surface, such as a concrete floor. Do not set up the bender on an uneven surface.
2. Remove chain vise from its secured location and install by pulling knob on front side vise mount receiver while sliding the vise into place (**Fig. 1**).
Release knob to lock into place.



3. Remove handle from stored location and insert into ratchet handle receiver (**Fig. 2**).
Secure by tightening Allen screw on inside of ratchet handle receiver.



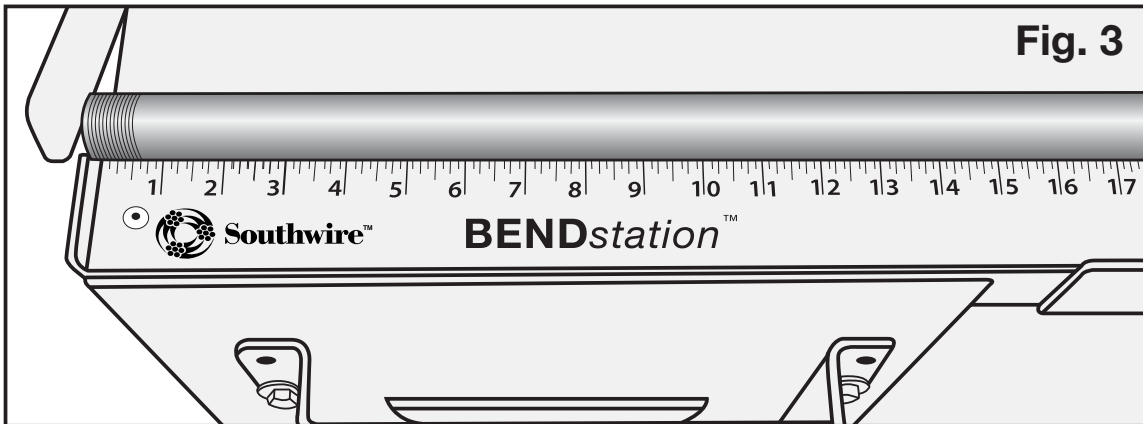
4. Ensure you have all the tools and material needed to successfully complete a bend.

ADDITIONAL ITEMS

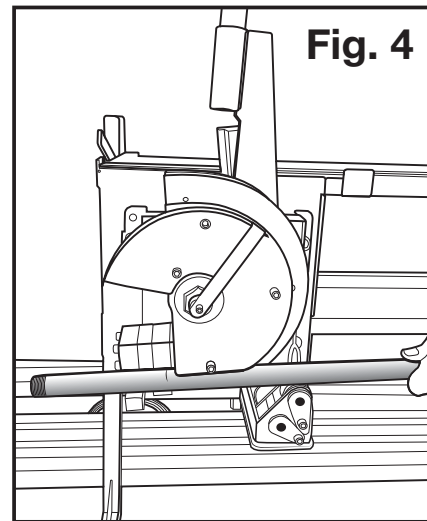
- A. Personal protective equipment
- B. Portable band saw or other conduit cutting device
- C. Appropriate reamer or filing tool
- D. Black marker
- E. Magnetic level (Southwire MCB Level)
- F. Rigid or IMC conduit

OPERATION

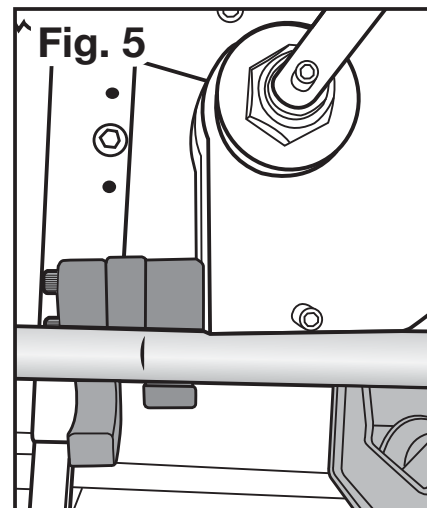
1. Before bending, make sure all caster wheels are in the locked position.
2. Choose desired size conduit and place on top of work station. Use attached 60" ruler by laying conduit above ruler and slide conduit to the far left side and butt up against conduit stop to make marks at desired lengths (**Fig. 3**).



3. Move the handle far enough forward to align conduit hook and the conduit rollers so that the conduit fits into shoe (**Fig. 4**).



4. Line up bending mark with front edge of bending hook (**Fig. 5**) or for centerline bends use appropriate degree marks on bending shoe.



OPERATION

- Utilize the ratcheting system to allow the operator to use body weight to increase bending force with minimal effort. To utilize this system, lift up on the ratchet release tab and lift the ratchet handle to lower to a suitable leverage point (**Fig. 6**).

Release tab once desired angle is achieved.

Lower ratchet handle to begin the bending process.

Continue to ratchet handle up and down while bending the conduit until desired bend angle is reflected on the protractor.

Allow for spring back in conduit by adding the spring back rating of the conduit brand to the degree of bend desired.

- When bend is finished, lift handle past the vertical position and twist conduit out to release.
- To reset the shoe for the next bend, lift ratchet handle all the way forward and apply downward force with hand on the front of the shoe hooks (**Fig. 7**) and shoe will release back to the "0" Degree mark.
- Lower handle to the horizontal position once complete.

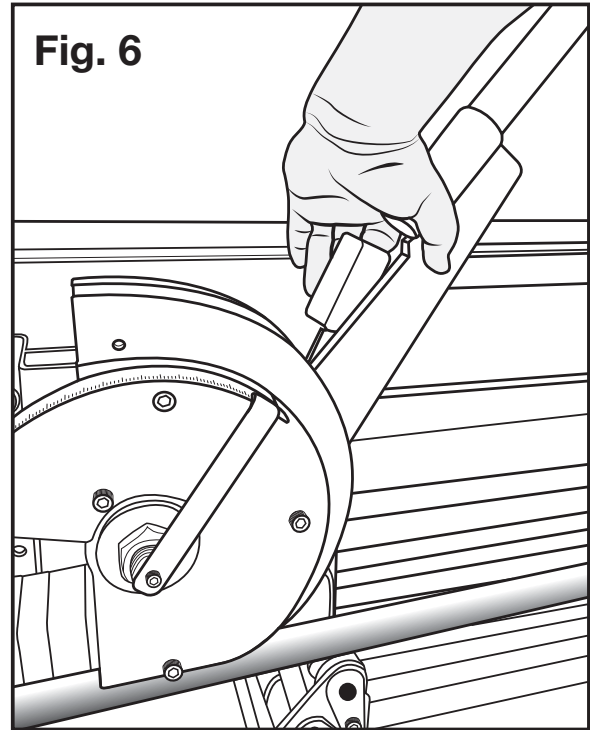


Fig. 6

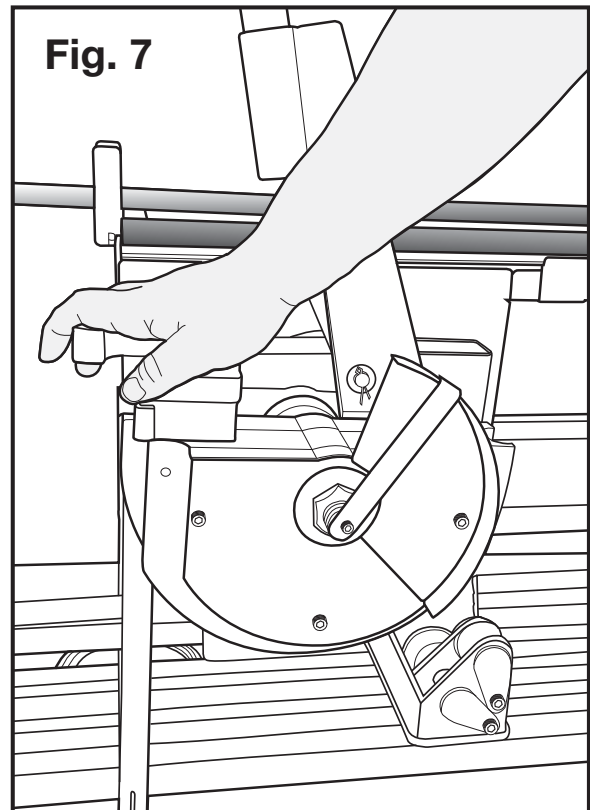
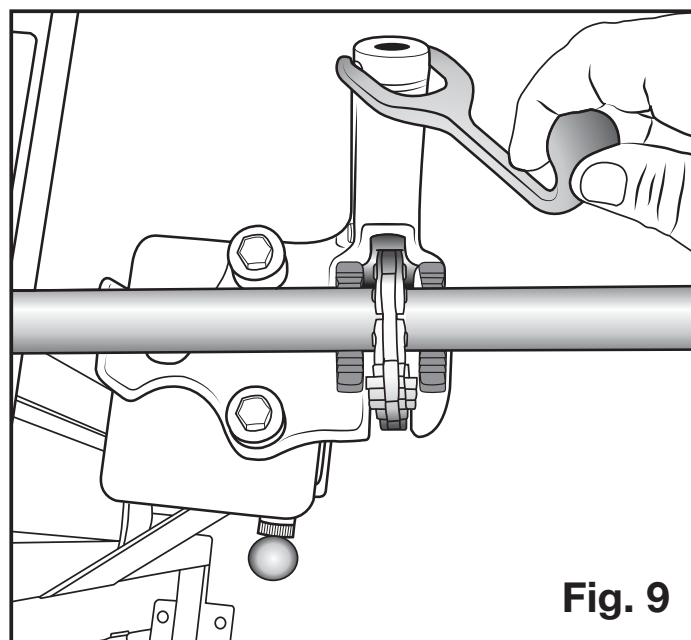
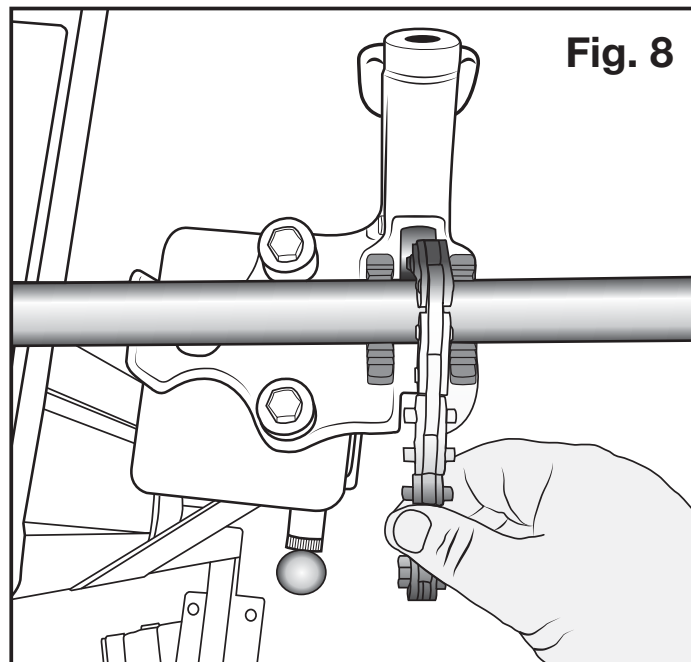


Fig. 7

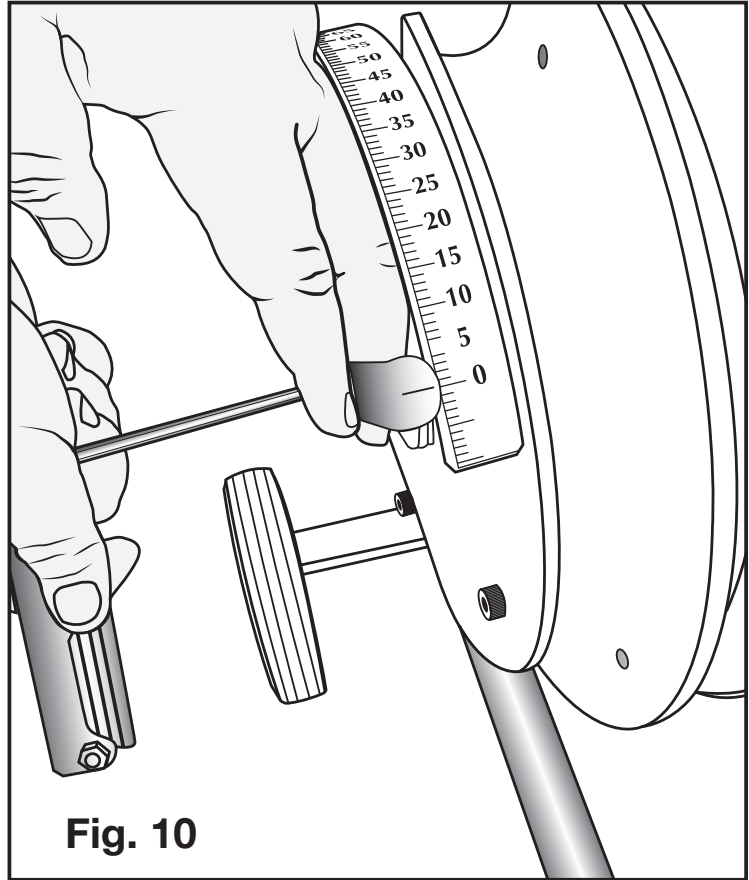
CHAIN VISE FOR CUTTING AND THREADING

1. To utilize the chain vise for cutting and threading of **3/4"** or **1"** Rigid or IMC conduit, lay conduit across the top of the chain vise.
2. Wrap chain over the top of the conduit and secure the side chain teeth into the grooves under bottom of the vise (**Fig. 8**). Rotate handle clockwise to lock in the conduit.
Handle should be tight to ensure the best results for both cutting and threading applications (**Fig. 9**).



CALIBRATING THE PROTRACTOR

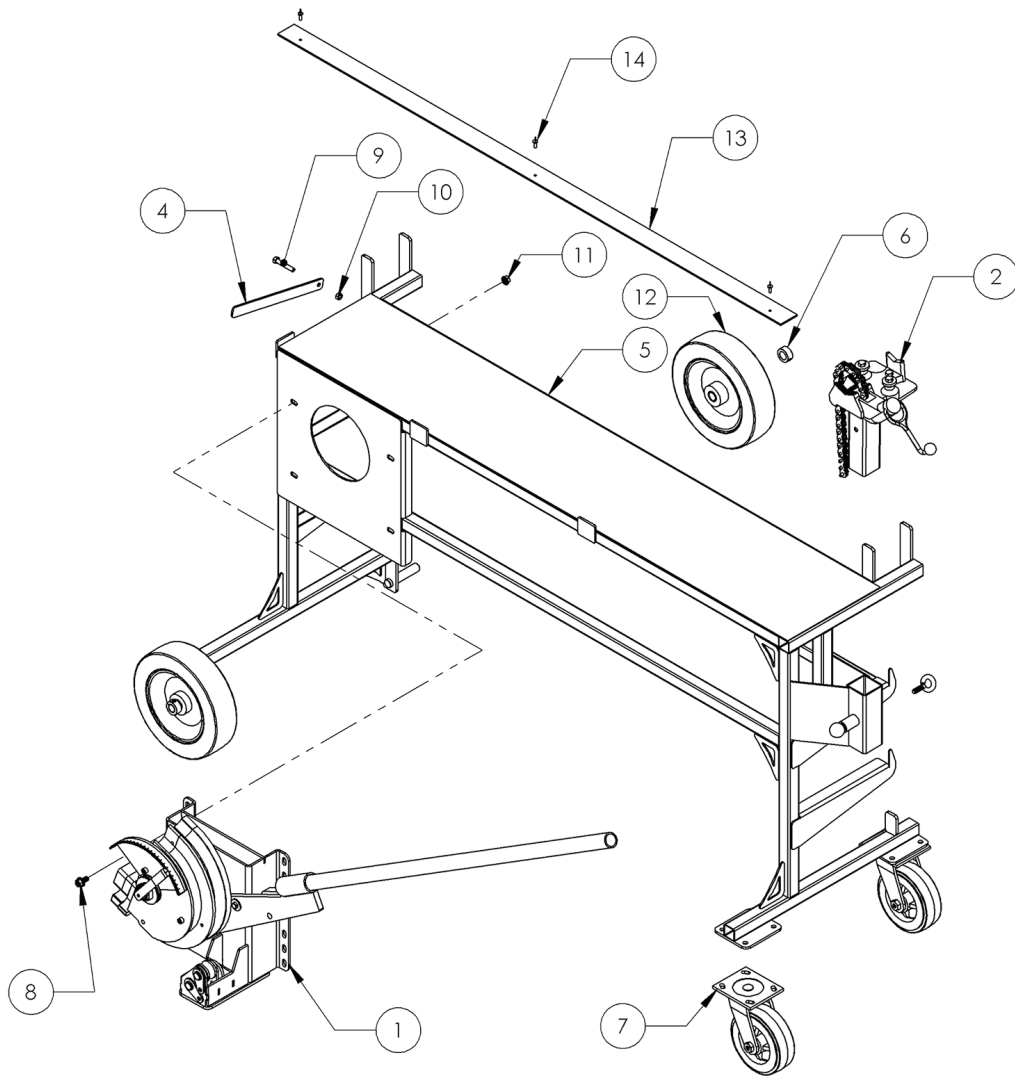
1. When calibrating the **3/4"** and **1"** protractor pointer, place a piece of **3/4"** or **1"** Rigid or IMC conduit into the bending shoe.
2. Apply pressure to the bending handle making sure it is tight, do not bend the conduit.
3. View protractor pointer, if it points to zero or desired setting, calibration is finished. If not, continue to step 4.
4. Adjust protractor pointer by loosening the Allen screw on the front side of the shoe using a **3/16"** Allen wrench (**Fig. 10**).
5. Apply pressure to the bending handle making sure it is tight, but not bending the conduit, then set the protractor pointer to zero or desired angle.
6. Tighten Allen screw with **3/16"** Allen wrench.
7. Calibration complete.



MAINTENANCE

1. Periodically check the protractor setting and calibrate as needed.
2. Periodic application of a lubricant to the conduit slide rollers and bending shoe to allow for smooth transition of conduit while bending.
3. Keep **BENDstation™ RIGID Workstation** dry and clean when not in use.

EXPLODED DIAGRAM COMPLETE ASSEMBLY



ITEM NO.	MODEL NUMBER	DESCRIPTION	QTY.
1	1281	Assy, One Inch Rigid Bender Head	1
2	1343	Assy, Pipe Vise	1
3	McMaster-Carr 9489T31	Bolt, .38-16 x .88 Eyebolt	1
4	1371	Stop Arm	1
5	1401	Weldment, Cart, Rigid Bendstation	1
6	McMaster-Carr 6432K21	Collar, Shaft, .75 Round Set-Screw	2
7	CST-8TL	Swivel Caster	2
8	McMaster-Carr 92323A552	Bolt _38 x _75 Flange	12
9	McMaster-Carr 91247A591	Bolt, .31-18 UNC x 2	1
10	McMaster-Carr 95615A160	NUT, 5/16-18 NYLOCK	1
11	McMaster-Carr 99904A103	Nut _375 NC Flange	12
12	SBT-01W	10" Wheel	2
13	RB-R60	Ruler	1
14	McMaster-Carr 97447A060	3/16" x .70" Aluminum blind rivet	3

SPECIFICATIONS

- Model #RB1000
- Stock #59840701
- **BENDstation™ RIGID Workstation**
- Length- 69"
- Width- 29"
- Height- 38.5"
- Weight- 170 lbs.
- Max Load Capacity- 700 ft. of conduit or 1000 lbs. of other material
- Patent Number- U.S. Patent No. 9,073,108 and other Patents Pending

WARRANTY ON SOUTHWIRE CONTRACTOR EQUIPMENT

Five-Year Limited Warranty on Contractor Equipment

Under Southwire's Contractor Equipment 5-Year Limited Warranty, Southwire Company, LLC warrants that all Southwire Contractor Equipment will be free from manufacturer defects for a period of five (5) years from the date of the original end user's purchase. The following products are excluded from this 5-Year Limited Warranty and are subject to separate warranty terms: rope, blades, dies, draw studs, grips, Southwire Contractor Equipment electronic components, and Material Boxes. Under this 5-Year Limited Warranty, the following are also excluded and Southwire Company, LLC will have no liability for any of the following: normal wear and tear resulting from product use and damage arising out of misuse, abuse, modification, and improper product maintenance. This warranty also does not cover Southwire Contractor Equipment products that have been modified by any party other than Southwire Company, LLC or its authorized third party designee. This 5-Year Limited Warranty is not transferrable to or enforceable by any person other than the product's original end user.

One-Year Limited Warranty on Rope, Blades, Dies, Draw Studs, Grips, and Southwire Contractor Equipment Electronic Components

Under this 1-Year Limited Warranty, Southwire Company, LLC warrants that all Southwire Ropes, Blades, Dies, Draw Studs, Grips, and Southwire Contractor Equipment Electronic Components will be free from manufacturer defects for a period of one-year from the date of the original end user's purchase. Under this 1-Year Limited Warranty for the aforementioned Southwire Contractor Equipment items, the following are excluded and Southwire Company, LLC will have no liability for any of the following: normal wear and tear resulting from product use and damage arising out of misuse, abuse, modification, and improper product maintenance. This warranty also does not cover Southwire Contractor Equipment that has been modified by any party other than Southwire Company, LLC or its authorized third party designee. This 1-Year Limited Warranty is not transferrable to or enforceable by any person other than the product's original end user.

Exclusion of Incidental, Consequential, Indirect, Special and Punitive Damages

SOUTHWIRE MAKES NO WARRANTY THAT SOUTHWIRE CONTRACTOR EQUIPMENT PRODUCTS WILL BE MERCHANTABLE OR FIT FOR ANY PARTICULAR PURPOSE. SOUTHWIRE MAKES NO OTHER WARRANTY, EXPRESSED OR IMPLIED, OTHER THAN THE RELEVANT WARRANTY SPECIFICALLY SET FORTH IN THIS WARRANTY SECTION. SOUTHWIRE WILL NOT BE LIABLE FOR ANY INCIDENTAL, CONSEQUENTIAL, INDIRECT, SPECIAL, OR PUNITIVE DAMAGES FOR ANY BREACH OF THIS LIMITED LIFETIME WARRANTY.

Some states do not allow the exclusion or limitation of incidental or consequential damages, so the above limitation or exclusion may not apply to you.

Warranty Claim Information/How Do You Get Service?

For all warranty, customer service, and product return authorizations and inquiries, please contact Southwire's Tools & Assembled Products at:

Southwire Tools & Assembled Products

840 Old Bremen Road

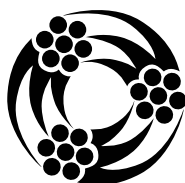
Carrollton, GA, 30117

Phone Number: 1.855.SW.Tools

1. All warranty claims must be approved by Southwire's Tools & Assembled Products Warranty Department prior to return of product. If Southwire determines that a product is defective, Southwire will, at its option, repair or replace defective products or defective product components, free of charge.
2. Upon approval, Southwire will issue a Product Return Authorization Form which will include instructions on how and where to return the product. **The product serial number and the original date of delivery must be set forth on the Product Return Authorization Form.**
3. Southwire will cover standard freight charges (FedEx Ground rate) incurred in connection with products that Southwire ultimately determines to be defective.
4. All defective components and defective products that Southwire replaces under these Warranties will become Southwire's property and will be retained by Southwire.

Fixing Your Product When it is Out of Warranty

Southwire is happy to provide information about where a purchaser can send a product for repair at consumers' own expense, please contact **1.855.SW.tools** or **visit www.southwiretools.com/tools/home.do** for more information about servicing for Southwire Products.



Southwire™

TOOLS & EQUIPMENT

southwiretools.com



1-855-SW-TOOLS

Toll Free Technical Help

Contents Made in USA

Product distributed by Southwire Company, LLC
One Southwire Drive, Carrollton, GA 30119

©2016 Southwire Company, LLC. All rights reserved.

05/16

RB100 Manual



We've got it
MADE IN AMERICA™