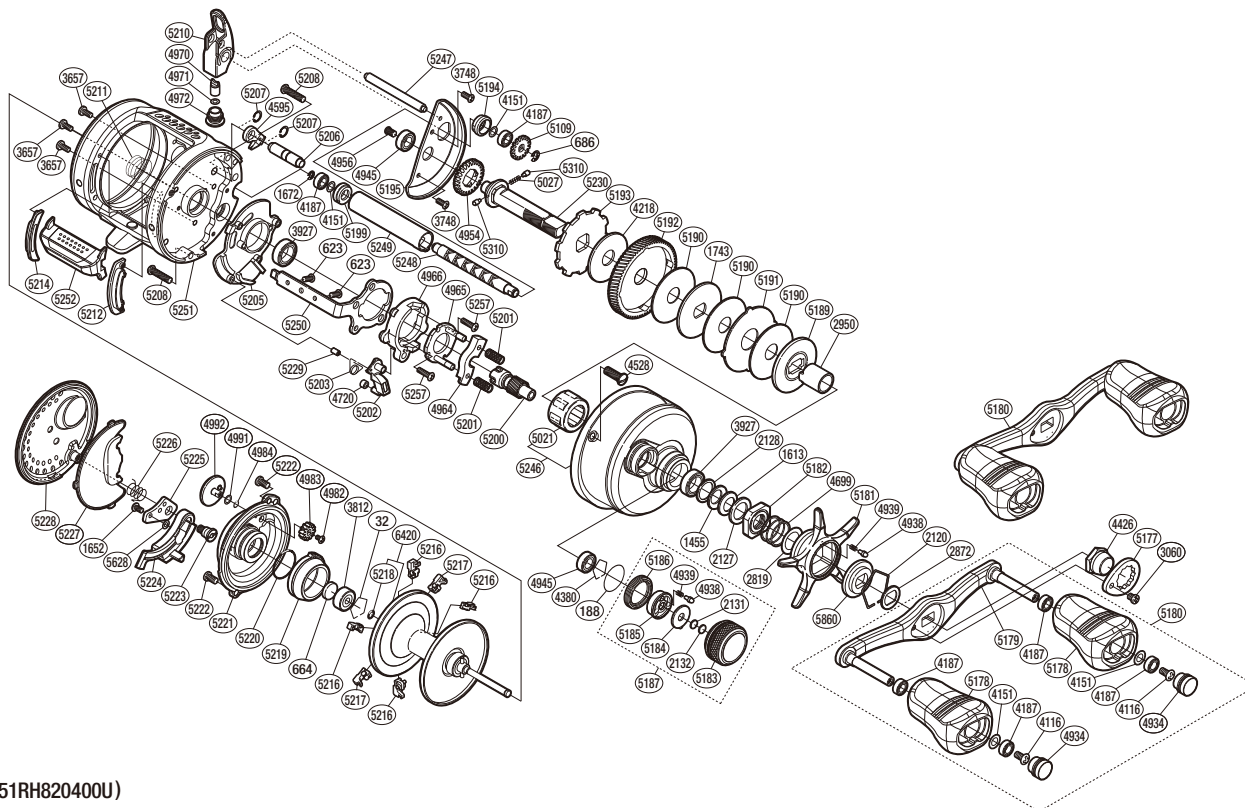


SHIMANO

CALCUTTA CONQUEST

CTCQ-400US



(51RH820400U)

#	Part No.	Description	#	Part No.	Description	#	Part No.	Description
32	10GEW	Bearing Retainer	4956	10PVT	Screw	5205	10BVS	Clutch Guard
188	109EB	O Ring	4964	1046X	Yoke	5206	10QD1	Anti-Reverse Pawl Pin
623	103C0	Screw	4965	10F3Y	Clutch Cam Retainer	5207	10S52	C Lock
664	1057S	Spacer B	4966	10K0X	Clutch Cam	5208	103M0	Screw
686	105NK	E Lock	4970	10FFT	Line Guide Pawl	5210	10NYG	Line Guide
1455	1052E	Drag Spring Washer (H)	4971	10GFH	Washer	5211	10EZE	Bearing Pressure Spring
1613	10EW3	Drag Spring Washer (L)	4972	10FJC	Pawl Cap	5212	10972	Clutch Bar Guide (B)
1652	10LVE	Screw	4982	10PRT	Screw	5214	10ASN	Clutch Bar Guide (A)
1672	105NC	E Lock	4983	10BGM	Br Dial Gear	5216	1046K	Brake Shoe M
1743	10LBC	Key Washer	4984	10FMT	O Ring	5217	1046J	Brake Shoe L
2120	10KXV	Click Plate Retainer	4991	10HYU	Washer	5218	10EZ7	O Ring
2127	10J1N	Star Drag Spacer	4992	10EV4	Br Dial	5219	10EXS	Brake Pipe Gear
2128	105PW	Bearing Washer	5021	10F33	Roller Clutch Bearing	5220	10EYV	O Ring
2131	10897	Spool Tension Spacer (B)	5027	10JDZ	Idle Gear Spring	5221	10FXH	Brake Case
2132	1085G	Spool Tension Spacer (A)	5109	10FNX	Idle Gear	5222	10LSL	Screw
2819	10HHN	Washer	5177	10Q66	Handle Nut Plate	5223	10GM6	B Side Plate Insert
2872	107QQ	Friction Washer	5178	10326	Handle Knob	5224	10BAS	Side Plate Cam Lever
2950	10BN6	Roller Clutch Inner Tube	5179	10A69	Handle Shank Assembly	5225	10AYX	Damper Bush
3060	10CZ5	Screw	5180	10BLV	Handle Assembly	5226	10KNA	Damper Spring
3657	103C2	Screw	5181	10AU2	Star Drag	5227	104MM	B Side Plate Seal
3748	10MPR	Screw	5182	10A3V	Star Drag Nut	5228	10D0H	Left Side Plate
3812	105C1	Ball Bearing	5183	10KDP	Cast Control Cap	5229	108S5	Clutch Pawl Spring Collar
3927	10EX8	Ball Bearing	5184	10L2E	Cast Control Click Plate	5230	13UFC	Drive Shaft
4116	103E9	Screw	5185	10BSX	Click Pin Holder	5246	10HZR	Right Side Plate
4151	10G8D	Washer	5186	10L70	Cast Control Click Holder	5247	10GUH	Level Wind Guide
4187	104VX	Ball Bearing	5187	10HWD	Cast Control Cap Assembly	5248	104ZF	Worm Shaft
4218	10D31	Drag Washer	5189	10D3J	Pressure Plate	5249	10NFV	Level Wind Guard
4380	1057X	Retainer	5190	1071Z	Drag Washer	5250	10QLD	Clutch Plate
4426	10FNF	Handle Nut	5191	10LB7	Eared Washer	5251	10EVN	One-Piece Frame
4528	10A6X	Screw	5192	10CML	Drive Gear	5252	10MWJ	Quick-Fire II Clutch Bar
4595	10MW1	Anti-Reverse Pawl	5193	10D71	Anti-Reverse Ratchet	5257	10TP0	Screw
4699	10A71	Star Drag Spring	5194	10N9Q	Worm Bushing A	5310	10HJG	Idle Gear Pin
4720	1048C	Clutch Pawl Bushing	5195	109SX	Drive Shaft Retainer	5628	10280	Washer
4934	10FMG	Handle Knob Seal	5199	104SP	Worm Bushing B	5860	10J26	Star Drag Click Plate
4938	10B27	Click Pin	5200	10CS4	Pinion Gear	6420	101UZ	Spool Assembly(With Bearing)
4939	10988	Click Spring	5201	104BC	Yoke Spring			
4945	105BR	Ball Bearing	5202	105ZM	Clutch Pawl			
4954	10J6W	Idle Gear	5203	104CJ	Clutch Pawl Spring	4692	10LQ0	B-100 Oil (Accessory)

Please note that the number of adjusting washers may not be the same as shown in the exploded views.
(Adjustment will vary with each individual product.)

(241204)_004