

READ ME FIRST

# QUICK INSTALL GUIDE



## Wireless Controller System with AC1200 Dual-Band Wireless Access Point XWS-1810

### Package Contents:

- ▶ XWC-1000 Wireless Controller  
(Includes Rack Mount Kit and Power Cord)
- ▶ XAP-810 Access Points (2)
- ▶ PoE Injectors (2)

**LUXUL**

# BEFORE YOU BEGIN INSTALLATION

- ▶ **Access Point Firmware:** If you are using APs other than those included in this kit, ensure that firmware is v5 or newer. Visit the AP Firmware upgrade page at [luxul.com/ap-upgrade](http://luxul.com/ap-upgrade) for details.
- ▶ **Controller Setup Sequence:** Be sure to set up the XWC-1000 Wireless Controller BEFORE powering up the APs. Once logged into the Wireless Controller, the Setup Wizard will prompt you when it is time to add the APs to the network. A DHCP server is required on the network.
- ▶ **Accessibility:** Once an AP is managed by the XWC-1000 Wireless Controller, AP web interface functionality is reduced. To change an AP from Controller-managed to standalone (or the reverse), restore the AP to Factory Default.
- ▶ **Firmware Updates:** The XWC-1000 Wireless Controller automatically checks for firmware updates of Controller-compatible APs and the Wireless Controller itself, but requires Internet access to do so. The Controller will operate without the Internet access, but firmware updates will be unavailable.

## 1 Physical Installation

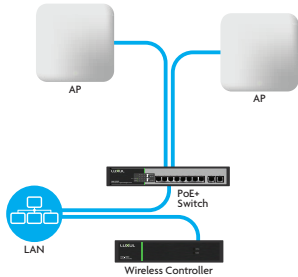
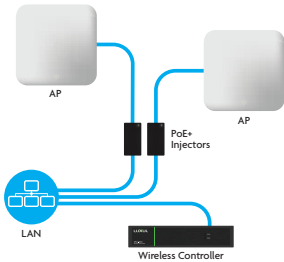
The XWC-1000 and XAP-810 access points are designed for simple and efficient installation and setup. The XAP-810's can be mounted on the ceiling, wall or placed on a desktop or shelf, while the XWC-1000 can be rack-mounted or placed on a horizontal surface.

---

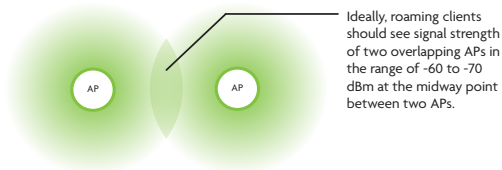
**⚠ Caution:** *Attach the rubber feet to the AP mount and attach the mount to the AP for flat surface placement to avoid overheating and failure.*

---

- ▶ **Connecting Devices:** The XWC-1000 Wireless Controller simply connects to the network. The XAP-810 APs connect to the network via the included PoE Injectors or a 802.3at compliant PoE switch (see diagram on next page).



- ▶ **Access Point Placement:** Place APs to ensure adequate coverage, but not so far apart that there is no signal overlap. You may have to experiment with AP placement to optimize the roaming experience. The APs should overlap enough that the client device has a good connection to the AP to which it is currently attached, but also sees the next-nearest AP.



Ideally, roaming clients should see signal strength of two overlapping APs in the range of -60 to -70 dBm at the midway point between two APs.

---

✓ **Note:** Visit [luxul.com/ap-placement](https://luxul.com/ap-placement) for more detail on how to select and optimize AP placement.

---

✓ **Note:** Consider using Ekahau HeatMapper to assist with this process, available from [www.ekahau.com](https://www.ekahau.com). Luxul also offers an informative “How-To” video on HeatMapper at [luxul.com/how-to-videos](https://luxul.com/how-to-videos).

---

## 2 Preparing for Access

### IP Addressing

If the XWC-1000 is connected to a network with a 192.168.0.X address scheme, and your computer shares a similar address on the same network, you can skip to the next step, **Getting Connected**.

---

✓ **Note:** *Be sure a DHCP server is present on the network and that all Luxul APs and the XWC-1000 Wireless Controller will share the same subnet.*

---

If your network doesn't use a 192.168.0.X IP address scheme, you will need to manually change the IP address of your computer to be able to configure the XWC-1000 Wireless Controller so that it is on the same subnet as your network. For help setting the IP address of your particular operating system, visit [luxul.com/ip-addressing](http://luxul.com/ip-addressing).

### 3 Getting Connected

Access the Setup Wizard by opening your web browser and enter the Wireless Controller's default 192.168.0.19 IP address in the address field. Log in to the Wireless Controller using the default user name and password:

**Default IP: 192.168.0.19**

**Username: admin**

**Password: admin**

---

**⚠ Caution:** *If there is another device on the network already using the 192.168.0.19 address, you'll need to either temporarily disconnect or reconfigure that other device, or manually configure the Wireless Controller with a different address on a separate isolated network.*

---

### 4 Wireless Controller Configuration

Follow the built-in Setup Wizard in the Wireless Controller. The Wizard will walk you through creating a configuration profile, then it will automatically configure and manage all available APs on the same network. You may add or remove APs to or from the managed profile at any time.

---

**💡 Smart Tip:** *For more information on setup and configuration best practices, visit [luxul.com/smart-tips](https://luxul.com/smart-tips).*

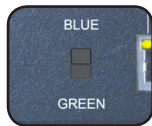
---

# 5

## Hardware Operation - Wireless Controller

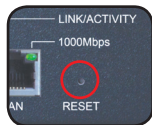
### Selecting front-panel LED color

Use the switch on the rear panel of the XWC-1000 Wireless Controller to switch the Power and System LEDs on the front panel between green and blue to best match the equipment in the rack where the Wireless Controller is sharing space.



### Resetting the Controller

- ▶ **Reset/Reboot:** Use a paper clip to briefly press and release the Reset button on the rear panel of the Controller to force it to reboot. The front panel LEDs will go dark once the button is released, then the System LED will blink slowly while the controller reboots.
- ▶ **Restore Factory Defaults:** To restore the controller to Factory Default configuration, press and hold the Reset button for at least 5 seconds. The System LED will blink quickly to indicate that the Controller is returning to Factory Default configuration, go dark for a few seconds, then blink slowly while the controller boots.
- ▶ **Normal Operation:** When the controller is operating normally, the System LED will blink like a heartbeat, i.e. blink-blink-pause.



---

**⚠ CAUTION:** *Pressing and holding the Reset button will restore the Wireless Controller to factory default and remove any custom configuration.*

---

## 5 Hardware Operation - Wireless Access Points

### LED Indicators

If the green power LED is ON, the XAP-810 is working. If the Power LED is OFF, the AP is not receiving power or the LED has been turned off in the AP's web interface. If the power LED is blinking, the XAP-810 is booting. The two blue LEDs indicate each of the 2.4GHz and 5GHz networks are configured and broadcasting.



### Reset Button:

The Reset button is located underneath the mount and marked RESET. It may be used to reboot the AP or to restore factory default settings.

To Reboot the AP: With the XAP-810 powered on, simply press and release the Reset button.



To Restore the Default Settings: With the XAP-810 powered on, press and hold the Reset button for at least 5 seconds. Release the button, the LED will flash rapidly and the XAP-810 will be set to factory defaults.

---

**⚠ CAUTION:** *Pressing and holding the Reset button will restore the AP to factory default and remove any custom configuration.*

---

**PoE Injector:** If the Green ON LED is illuminated, power is connected to the injector. If the ON LED is not lit, the injector is not receiving power.

## Sales

P: 801-822-5450

E: sales@luxul.com

## Technical Support

P: 801-822-5450 Option 3

E: support@luxul.com

### Copyright and Trademark Notices

No part of this document may be modified or adapted in any way, for any purposes without permission in writing from Luxul. The material in this document is subject to change without notice. Luxul reserves the right to make changes to any product to improve reliability, function, or design. No license is granted, either expressly or by implication or otherwise under any Luxul intellectual property rights. An implied license only exists for equipment, circuits and subsystems contained in this or any Luxul product.

© Copyright 2017 Luxul. All rights reserved. The name Luxul, the Luxul logo, the Luxul logo mark and Simply Connected are all trademarks and or registered trademarks of Luxul Wireless, Inc. All other trademarks and registered trademarks are property of their respective holders.

LUX-QIG-XWS-1810-v1 07181704

A brand of  **legrand**<sup>®</sup>

