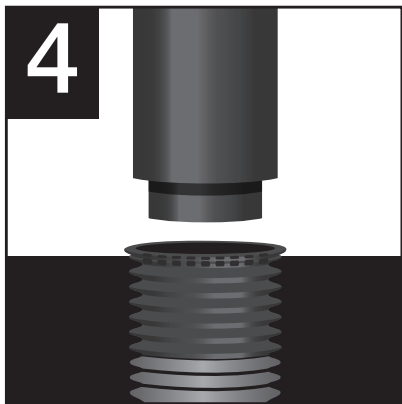
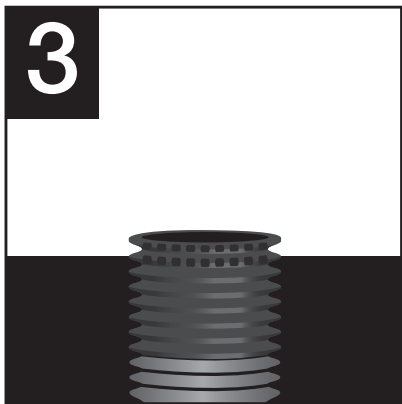
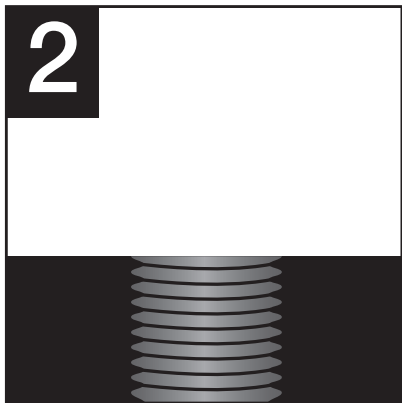
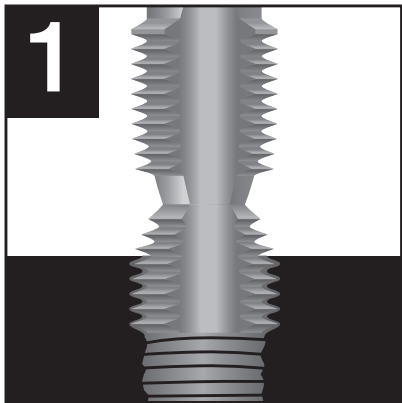


## ***INSTRUCTIONS:***

1. Tap new threads at 90° angle. DO NOT cross thread.  
Cutting oil is recommended
2. Clean and dry the new threads.
3. Hand screw the insert into the new threads.
4. Once insert is fully installed (knurled portion still exposed),  
use punch tool to strike and set the top flange of the insert.



Visit [www.wilmarllc.com](http://www.wilmarllc.com) for more information