

VP6030CTSM2

60 x 30 x 79



PROFESSIONAL

FEATURES

- Modern, matte finish
- Smooth, 4-piece kit
- Easy Wedge & Lock installation
- Caulkless installation
- Integral soap shelves
- Available in White only
- 15 Year residential limited warranty

COMPONENTS OF KIT

Above Floor Rough (AFR)

- VP6030CTML (Tub) or VP6030CTMR (Tub)
- VP6062CBW2 (Back Wall)
- VP2462CSW (Side Walls)

Aging In Place (AIP)

- VP6030CTML (Tub) or VP6030CTMR (Tub)
- VP6062CBW2A (Back Wall)
- VP2462CSWA (Side Walls)

PACKAGED DIMENSIONS

- Tub: 62 1/2 x 34 x 21 1/4
- Back Wall: 65 x 61 1/2 x 8 1/2
- Side Wall Set: 64 x 26 1/2 x 5 1/4

VERITEK PRO

Lightweight and durable, Veritek Pro is produced with Swan Solid Surface, a proprietary SMC compound.

Veritek Pro is the better bathroom solution and is a snap to install!

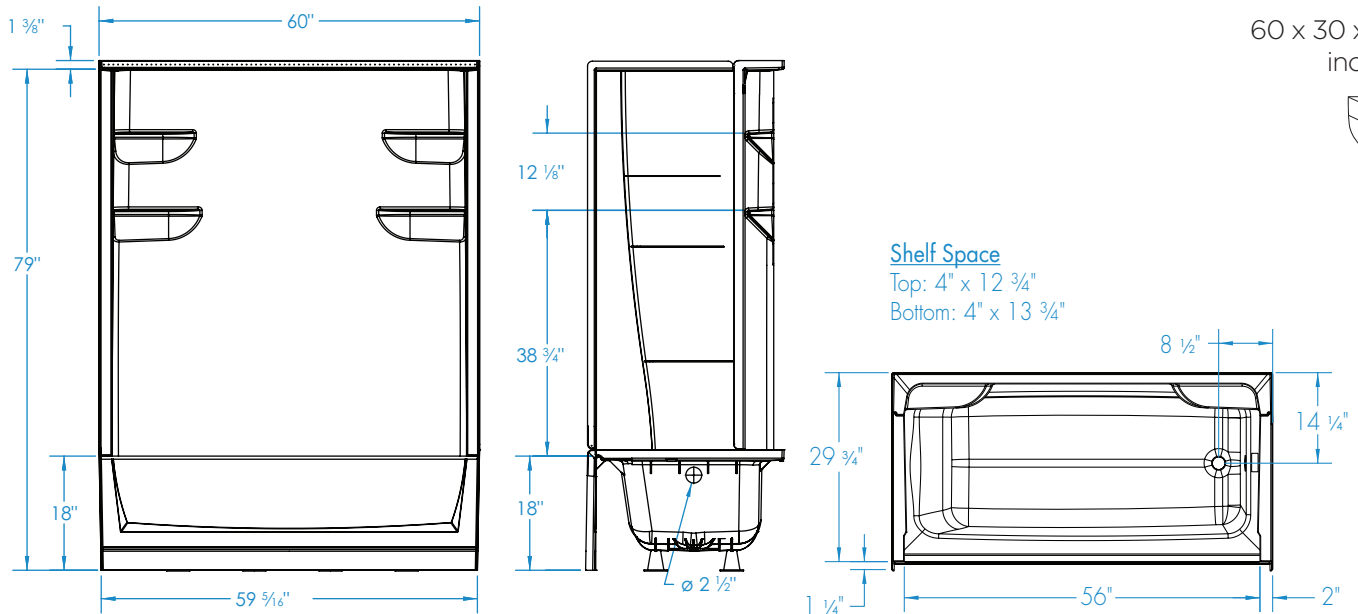
Available in the Following Offerings:

Depth	Width	Height Standard	Height AFR	Model Number			
				Standard	AIP	AFR	AIP & AFR
30	60	76	79	VP6030CTS2L/R	VP6030CTS2AL/R	VP6030CTSM2L/R	VP6030CTSM2AL/R

- **Standard:** Base model shower, tub, or tub shower offering
- **Aging In Place (AIP):** Reinforced shower or tub shower walls that allows for future grab bar installation
- **Above Floor Rough (AFR):** Clearance for drain placement, eliminating the need for drain relocation
- **Aging In Place (AIP) & Above Floor Rough (AFR):** A combination kit for AFR & AIP



VP6030CTSM2

 60 x 30 x 79
inches


FEATURES Dimensional Tolerance $\pm 3/8"$. Dimensions needed for site preparation should be measured from the unit. Manufacturer assumes no responsibility for preparatory work.

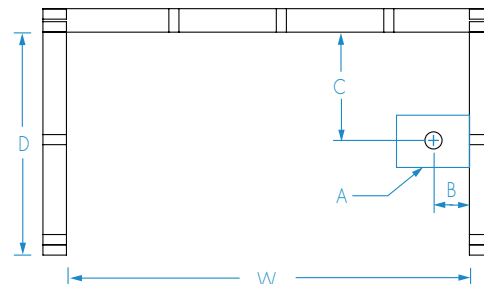
Type	Model #	Material	Height	Drain	Net Wt. lbs	Pkg. Wt. lbs
AFR Tub-Shower	VP6030CTSM2L/R	Swan Solid Surface	79	LH or RH	130	145
AIP and AFR Tub-Shower	VP6030CTSM2AL/R	Swan Solid Surface	79	LH or RH	160	175

DIMENSIONS

Specifications	inches
Width: Overall / Net	60
Depth: Overall / Net	31 1/4 / 30
Height: Overall / Net	80 3/8 / 79
Enclosure Opening	56 3/4
Skirt Height	18
Drain Rough-In (from Back Wall)	14 1/4
Drain Rough-In (from Side Wall)	2 7/8
Drain: Diameter / Clearance	2 / 3 1/2

FRAMING DIMENSIONS inches

Type	D Depth	W Width	H Height	A	B	C
Alcove	31 1/4	60	80 3/8	Box Out	2 7/8	14 1/4



SUMP DATA

Top of Drain to Bottom of Overflow	Capacity to Overflow gal	WIDTH @ centerline		DEPTH @ centerline	
		Top	Bottom	Top	Bottom
9 7/8	37	51 1/2	45 1/2	22 1/4	20 1/2