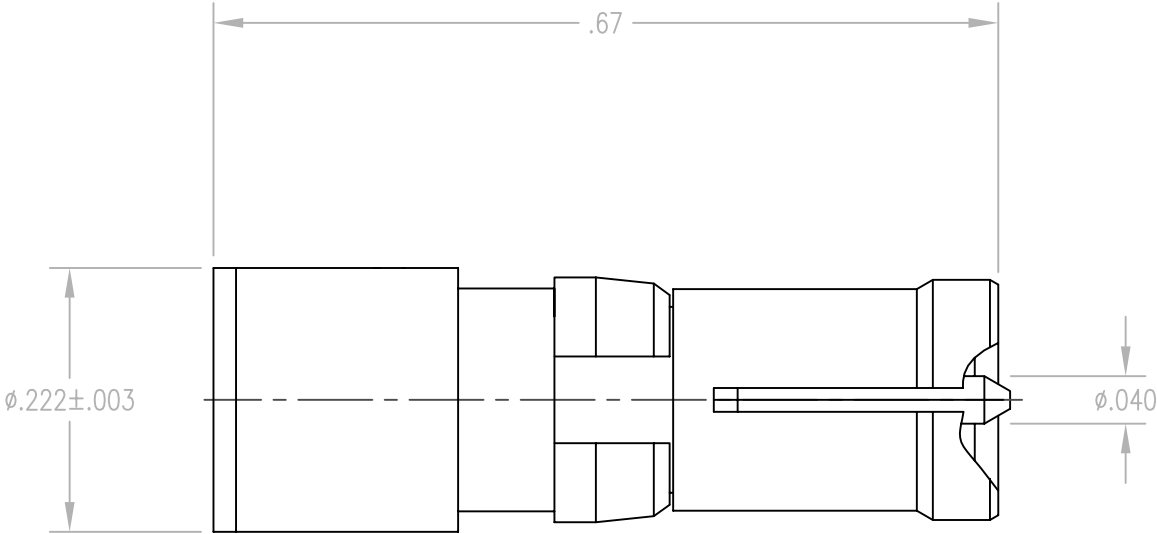


THIS INFORMATION IS PROPRIETARY AND CONFIDENTIAL. IT IS DISCLOSED TO YOU ON CONDITION NO FURTHER DISCLOSURE IS MADE TO OTHER THAN RETCONN PERSONNEL WITHOUT WRITTEN AUTHORIZATION FROM RETCONN INC., TORRINGTON, CT.

THIS IS A CONTROLLED DOCUMENT AND IS SUBJECT TO CHANGE
CONTACT ENGINEERING DEPARTMENT FOR LATEST REVISION

DWG. NO. 311-100-0002G



NOTES:

1. MATERIALS

MATING BODY: BERYLLIUM COPPER PER ASTM B196
INSULATOR: TEFLON PER ASTM D1710
CLIP RING: BERYLLIUM COPPER PER ASTM B194
ALL OTHER METAL PARTS: BRASS PER ASTM B16

2. FINISH

BODY COMPONENTS: .000030 MIN. GOLD PER MIL-G-45204
OVER .000050 MIN. NICKEL PER QQ-N-290
CONTACT: .000030 MIN. GOLD PER MIL-G-45204
OVER .000050 MIN. NICKEL PER QQ-N-290
CLIP RING: .000100 MIN. NICKEL PER QQ-N-290 OVER
COPPER FLASH

UNLESS OTHERWISE SPECIFIED
ALL DIMENSIONS ARE NOMINAL AND
FOR REFERENCE ONLY.
DIMENSIONS IN INCHES
DO NOT SCALE PRINT

SALES DRAWING
RETCONN
A SUBSIDIARY OF SPM

199 W. PEARL ROAD TORRINGTON, CT. 06790
TEL. (860) 489-1220 FAX (860) 496-7307

TITLE					
31 SERIES RESISTIVE TERMINATION					
DRAWN	JMC	DATE	11/5/97	CHECKED	JM
SCALE	6:1	FSCM	ODWJ4		
APPR.	PRP	DWG. NO.	311-100-0002G	REV.	B

REV.	DESCRIPTION OF CHANGE	DATE	DRN	APPR
B	ECN 2057	7/27/98	JMC	
A	ECN 1937	3/26/98	EJW	JMC
-	RELEASED PER NPR 615	11/5/97	JMC	PRP
REVISIONS				

MATERIAL
FINISH