

150# Malleable Fittings

Specification Sheet

NON-CHINA



- Black & Galvanized
- Meets or exceeds all applicable ASTM and ANSI standards
- Stocked from 1/8" through 6" diameters
- 100% pressure tested before leaving the factory
- UL and FM approved



NON-CHINA

150# Malleable Fittings

Specification Sheet

STANDARD SPECIFICATION (CLASS 150)

| Standard | American | British | German |
|-------------|--|--------------------------------------|-----------------|
| Design | ANSI/ASME B 16.3 ANSI/ASME B 16.14 ANSI/ASME B 16.39 | BS EN 10242 BS 143 & 1256 | DIN EN 10242 |
| Thread | ANSI/ASME B 1.20.1 | ISO 7, ISO 228 ANSI/ASME B 1.20.1 | ISO 7, ISO 228 |
| Material | ASTM A197 | BS EN 1562 | DIN EN 1562 |
| Galvanizing | ASTM A153 | BS EN ISO 1461 | DIN EN ISO 1461 |
| Type | BANDED | BANDED | BEADED |

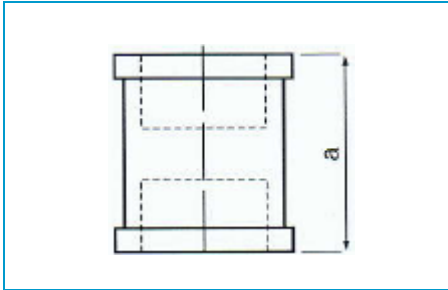


NON-CHINA

150# Malleable Fittings

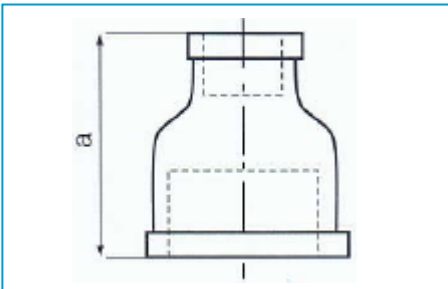
Specification Sheet

Coupling



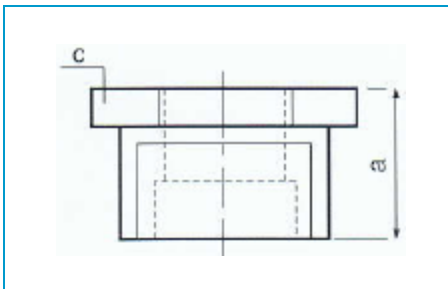
| | | | | | | | |
|------|-------|------|-------|------|------|------|-------|
| Size | 1/8 | 1/4 | 3/8 | 1/2 | 3/4 | 1 | 1-1/4 |
| A | 0.96 | 1.06 | 1.16 | 1.34 | 1.54 | 1.67 | 1.93 |
| Size | 1-1/2 | 2 | 2-1/2 | 3 | 4 | 6 | |
| A | 2.15 | 2.53 | 2.88 | 3.18 | 3.69 | 4.14 | |

Reducing Coupling



| | | | | | | | |
|------|-----------|-------------|-----------|---------|-------------|-------------|-----------|
| Size | 1/4x1/8 | 3/8x1/8 | 3/8x1/4 | 1/2x1/8 | 1/2x1/4 | 1/2x3/8 | 3/4x1/8 |
| A | 1.00 | 1.13 | 1.13 | 1.25 | 1.25 | 1.25 | 1.44 |
| Size | 3/4x1/4 | 3/4x3/8 | 3/4x1/2 | 1x1/4 | 1x3/8 | 1x1/2 | 1x3/4 |
| A | 1.44 | 1.44 | 1.44 | 1.69 | 1.69 | 1.69 | 1.69 |
| Size | 1-1/4x3/8 | 1-1/4x1/2 | 1-1/4x3/4 | 1-1/4x1 | 1-1/2x3/8 | 1-1/2x1/2 | 1-1/2x3/4 |
| A | 2.06 | 2.06 | 2.06 | 2.06 | 2.31 | 2.31 | 2.31 |
| Size | 1-1/2x1 | 1-1/2x1-1/4 | 2x3/8 | 2x1/2 | 2x3/4 | 2x1 | 2x1-1/4 |
| A | 2.31 | 2.31 | 2.81 | 2.81 | 2.81 | 2.81 | 2.81 |
| Size | 2x1-1/2 | 2-1/2x1/2 | 2-1/2x3/4 | 2-1/2x1 | 2-1/2x1-1/4 | 2-1/2x1-1/2 | |
| A | 2.81 | 3.25 | 3.25 | 3.25 | 3.25 | 3.25 | |
| Size | 2-1/2x2 | 3x1/2 | 3x3/4 | 3x1 | 3x1-1/4 | 3x1-1/2 | 3x2 |
| A | 3.25 | 2.84 | 2.81 | 2.81 | 2.81 | 2.84 | 3.69 |
| Size | 3x2-1/2 | 4x3/4 | 4x1 | 4x1-1/4 | 4x1-1/2 | 4x2 | 4x2-1/2 |
| A | 3.69 | 3.35 | 3.35 | 3.35 | 3.35 | 3.35 | 4.39 |
| Size | 4x3 | 6x3 | 6x4 | | | | |
| A | 3.35 | 4.73 | 4.73 | | | | |

Bushing



| | | | | | | | |
|------|---------|---------|---------|---------|---------|---------|---------|
| Size | 1/4x1/8 | 3/8x1/8 | 3/8x1/4 | 1/2x1/8 | 1/2x1/4 | 1/2x3/8 | 3/4x1/8 |
| A | 0.79 | 0.79 | 0.79 | 0.95 | 0.95 | 0.95 | 1.02 |
| C | 0.67 | 0.75 | 0.75 | 0.87 | 0.87 | 0.87 | 1.18 |
| Size | 3/4x1/4 | 3/4x3/8 | 3/4x1/2 | 1x1/8 | 1x1/4 | 1x3/8 | 1x1/2 |
| A | 1.02 | 1.02 | 1.02 | 0.76 | 0.76 | 0.76 | 1.14 |
| C | 1.18 | 1.18 | 1.18 | 1.12 | 1.12 | 1.12 | 1.42 |