

# IMPORTANT SAFETY INSTRUCTIONS

When using electrical products, basic precautions should always be practiced including the following:

1. READ AND FOLLOW ALL SAFETY INSTRUCTIONS.
2. Maximum ambient temperature around the adapter must not exceed 40°C
3. Read and follow all instructions that are on the product or provided with the product.
4. The Power supply is certified according to the relevant safety standards UL1310.
5. The output power taken from the power supply must not exceed the rating given on the adapter.
6. The adapter is not intended to be repaired by service personnel in case of failure or component defect (unit can be thrown away).
7. The disconnection from line voltage is made by main plug.
8. This power unit is intended to be correctly orientated in a vertical or floor mount position.
9. Unplug from outlet before shortening, cutting or installing this product.
10. Do not use an extension cord to supply power to the strip.
11. Do not use within 10 feet of a pool.
12. Do not use in a bathroom.
13. This product is NOT a toy.
14. To avoid damage, use only with the power supply provided.
15. Do not open the product. Use only as intended.
16. Do not roll up the product when using. Spread out to full length before connecting power supply.
17. Do not operate if any component is damaged.

## WARNING:

**Risk of Electric Shock.** When used outdoors, install only to a covered Class A GFCI protected receptacle that is weatherproof with the power unit connected to the receptacle. If one is not provided, contact a qualified electrician for proper installation. Ensure that the power unit and cord do not interfere with completely closing the receptacle cover.

## WARNING:

**Risk of Electric Shock.** Mount the unit at a height greater than 1 foot from the ground surface.

## WARNING:

**Risk of Fire.** Installation involves special wiring methods to run wiring through a building structure.

## SAVE THESE INSTRUCTIONS

This manual contains important safety and operating instructions to power the unit.

## BATTERY WARNING:

Risk of fire, explosion, and burns. Do not disassemble, crush, heat above 100° C / 212° F or incinerate. REPLACE ONLY WITH one CR2032 battery. DISPOSE OF USED BATTERY PROMPTLY. KEEP AWAY FROM CHILDREN. DO NOT DISASSEMBLE AND DO NOT DISPOSE OF IN FIRE. When replacing battery, ensure the new battery is installed correctly with regard to polarity (+ and -) as shown on remote.

## CAUTION:

Dispose of used battery promptly according to local recycling or waste regulations. Clean battery contacts and also device contacts prior to installing battery. Ensure the battery is installed correctly with regard to polarity (+ and -). Remove battery from remote when not being used for an extended period of time. Remove used battery promptly. The LEDs in this strip light are not replaceable.

## WARNING:

- WARNING - KEEP BATTERIES OUT OF REACH OF CHILDREN.
- If you suspect your child has swallowed or inserted a button battery, immediately seek urgent medical assistance.
- Examine devices and make sure the battery compartment is correctly secured (e.g. ensure that the screw or other mechanical fastener is tightened). Do not use if compartment is not secure.
- Dispose of used button battery immediately and safely. A flat battery can still be dangerous.
- Tell others about the risk associated with button batteries and how to keep their children safe.

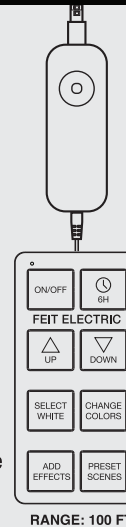
This product contains a button battery. If swallowed, it could cause severe injury or death in just 2 hours. Seek medical attention immediately.

### Controller Module Button:

- Single click - On/Off.
- Double-click - Cycles through preset scenes.
- Press and hold for 5 seconds when lights are off to enter Wi-Fi pairing mode or reset.

### Remote Control:

- ON/OFF: Turns on/off the Strip Light  
6HR: Set 6hr shutoff timer  
UP ARROW: Increase the brightness of solid colors / Increase the speed of selected effect  
DOWN ARROW: Decrease the brightness of solid colors / Decrease the speed of selected effect  
SELECT WHITE: Choose white color temperature  
CHANGE COLORS: Choose solid color  
ADD EFFECT: Add effect to a solid color or white  
PRESET SCENES: Cycle through pre-made color scene effects



### Remote Pairing:

#### Smart Mode

1. Plug in strip light.
2. Pair strip light to Wi-Fi using the Feit Electric App's on-screen instructions.
3. Power Cycle Strip light by disconnecting the power from the strip light and plugging it back in. Immediately press and hold the remote "ON/OFF" for 3 seconds.
  - The strip light will blink, indicating the pairing was successful.

#### Non-Smart Mode

1. Plug in strip light.
2. Cancel Wi-Fi pairing by disconnecting the power from the strip light and plugging it back in.
3. Press and hold the "ON/OFF" button on the remote for 3 seconds.
  - The strip light will blink, indicating the pairing was successful.

**LIMITED WARRANTY.** This product is warranted to be free from defects in workmanship and materials for up to 1 year from date of purchase. If the product fails within the warranty period, please contact Feit Electric at [feit.com/help](http://feit.com/help) for help. REPLACEMENT OR REFUND IS YOUR SOLE REMEDY. EXCEPT TO THE EXTENT PROHIBITED BY APPLICABLE LAW, ANY IMPLIED WARRANTIES ARE LIMITED IN DURATION TO THE DURATION OF THIS WARRANTY. LIABILITY FOR INCIDENTAL OR CONSEQUENTIAL DAMAGES IS HEREBY EXPRESSLY EXCLUDED. Some states and provinces do not allow the exclusion of incidental or consequential damages, so the above limitation or exclusion may not apply to you. This warranty gives you specific legal rights, and you may also have other rights which vary from state to state or province to province.

MODEL: TAPE192/CHASE/AG



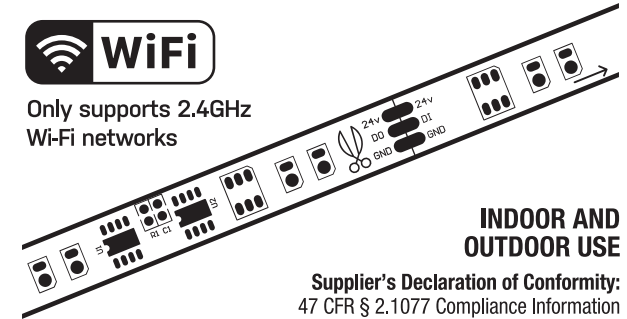
Color Changing - 16 FT

# Smart Color Strip Light

## Quick Install Guide



Only supports 2.4GHz Wi-Fi networks



### INDOOR AND OUTDOOR USE

**Supplier's Declaration of Conformity:**  
47 CFR § 2.1077 Compliance Information

**Responsible Party:**  
Feit Electric Company

4901 Gregg Road,  
Pico Rivera, CA 90660, USA  
562-463-2852

Unique Identifier:  
TAPE192/CHASE/AG

### ELECTRICAL RATINGS:

INPUT: 100-240VAC ONLY,  
50/60HZ, 0.6A MAX  
OUTPUT: 24VDC,  
1.0A 24W

This device complies with part 15 of the FCC Rules. Operation is subject to the following two conditions: (1) This device may not cause harmful interference, and (2) this device must accept any interference received, including interference that may cause undesired operation. Note: This equipment has been tested and found to comply with the limits for a Class B digital device, pursuant to part 15 of the FCC Rules. These limits are designed to provide reasonable protection against harmful interference in a residential installation. This equipment generates, uses and can radiate radio frequency energy and, if not installed and used in accordance with the instructions, may cause harmful interference to radio communications. However, there is no guarantee that interference will not occur in a particular installation. If this equipment does cause harmful interference to radio or television reception, which can be determined by turning the equipment off and on, the user is encouraged to try to correct the interference by one or more of the following measures: Reorient or relocate the receiving antenna. Increase the separation between the equipment and receiver. Connect the equipment into an outlet on a circuit different from that to which the receiver is connected. Consult the dealer or an experienced radio/TV technician for help. Any changes or modifications not expressly approved by the manufacturer could void the user's authority to operate the equipment. [www.feit.com](http://www.feit.com).

### Radiation Exposure Statement

This device complies with FCC radiation exposure limits set forth for an uncontrolled environment. This device should be installed and operated with a minimum distance of 20cm between the radiator and your body.

# Getting Started:

**WARNING:** These products may represent a possible shock or fire hazard if improperly installed or attached in any way. Products should be installed in accordance with this install guide, current electrical codes and/or the current National Electric Codes.

## CAUTION:

1. Use only insulated staples or plastic ties to secure cords.
2. Route and secure cords that they will not be pinched or damaged when furniture is pushed to the wall.
3. When mounting lights on furniture ensure lamp caution remains visible
4. Not intended for recessed installation in ceilings.
5. Electrical codes do not permit cords to be concealed where damage to insulation may go unnoticed.

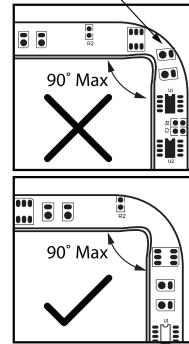
To prevent fire danger, do not run cord behind walls, ceilings, soffits, or cabinets where it may be inaccessible for examination. Cords should be visually examined periodically and immediately replaced when any damage is noted. Only use the control provided with or specified by the instructions to control this strip light. This lamp will not operate properly when connected to a dimmer or dimming control.

### 3 Prepare the Strip Light

- Measure the desired length before installation.
- Clean the mounting area thoroughly (surface must be free of dust, dirt or grease).
- Avoid bending the strip light which may damage the LEDs.
- Avoid removing and relaying the strip light multiple times as the adhesive may wear off.

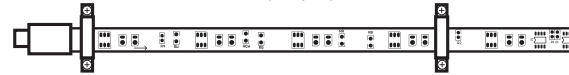


Do not bend at LED



### 4 Mount the Strip Light

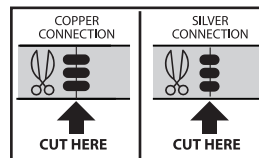
- Unroll strip light and place near mounting location. Ensure power supply and controller can reach to the start of the strip light. Do not connect to power yet.
- Peel adhesive tape from back of strip light to position strip light on mounting surface.
  - Screw in mounting clips (required for all long term installations). Save two clips to use for installing the controller module (Step 4).



This strip light uses permanent tape and may cause surface damage if removed. Not recommended for mounting on brick or concrete.

Feit Electric is not responsible for damage to mounted surfaces.

- Ensure the power supply is not plugged in at the wall outlet when mounting or cutting.
- **Cut to length ONLY on the line or solder pads NEXT to the scissor markings on strip light**, where the copper or silver metal is visible. Cutting at any other area will permanently damage the strip.



Once cut, the portion of the strip light that will not connect to the controller can be disposed of in accordance with local recycling or waste regulations.

- Optional - Add another Feit Electric Smart LED Strip Light (sold separately) to extend up to 32 ft.

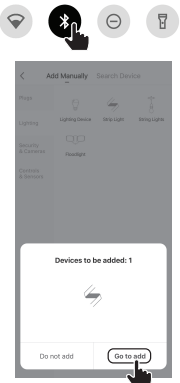


### 5 Turn on Bluetooth and Open the Feit Electric APP to Complete the Set Up.

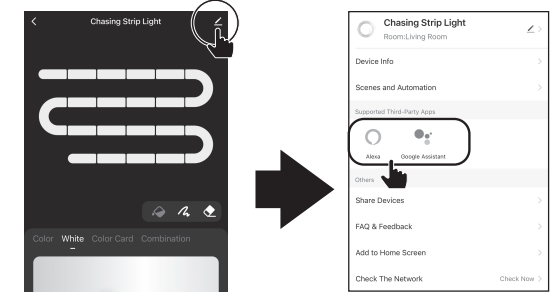
Tap **Add Device** or the + sign. The device name(s) will pop up on the Feit app. Tap on **Go to add**, then select the device to add. You will be prompted to enter your Wi-Fi network name and password.

Only one device may be added at a time using Bluetooth set up. Repeat Step 5 to add additional devices. Alternative setup options and help instructions are available in the Feit Electric app.

Be sure to connect to a 2.4 GHz Wi-Fi network that covers your installation location.



### 6 (Optional) Connect to Google Assistant or Alexa using the in-App Guide



Tap the top-right icon

Choose **Alexa** or **Google Assistant**

### TROUBLESHOOTING TIPS CONNECTING TO WI-FI

If you are having difficulty connecting:

- Make sure the Wi-Fi network is a 2.4 GHz network. Smart Strip Light will not connect to a 5 GHz network.
- Test your Wi-Fi network with other devices such as your phone to make sure it is operating properly.
- The Wi-Fi connection may not have good coverage during set up. Try moving the Smart Strip Light closer to your Wi-Fi router.

For more information, check the App User Guide and visit [www.feit.com/help](http://www.feit.com/help)

### Need Help?



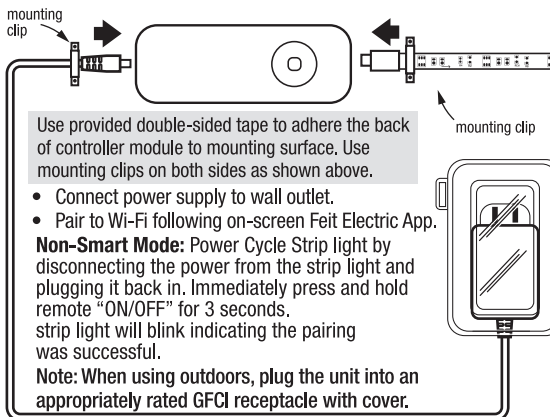
For 24/7 customer support, visit [feit.com/help](http://feit.com/help)

### 1 Download the Feit Electric App on your Smart Device



### 2 Connect the Controller Module

Connect the strip light to the controller module then connect the plug as shown in the image below.



Use provided double-sided tape to adhere the back of controller module to mounting surface. Use mounting clips on both sides as shown above.

- Connect power supply to wall outlet.
  - Pair to Wi-Fi following on-screen Feit Electric App.
- Non-Smart Mode:** Power Cycle Strip light by disconnecting the power from the strip light and plugging it back in. Immediately press and hold remote "ON/OFF" for 3 seconds, strip light will blink indicating the pairing was successful.

**Note:** When using outdoors, plug the unit into an appropriately rated GFCI receptacle with cover.

**Note:** To activate smart features, press and hold the controller module button down for 5 seconds while the unit is off to enter pairing mode. Your unit will cycle through RGB and then pulse a soft white light for 3 minutes. If you need to restart pairing, repeat the process.

If you are connecting two strip lights, use the included foam tape to secure male connector to mounting surface.

