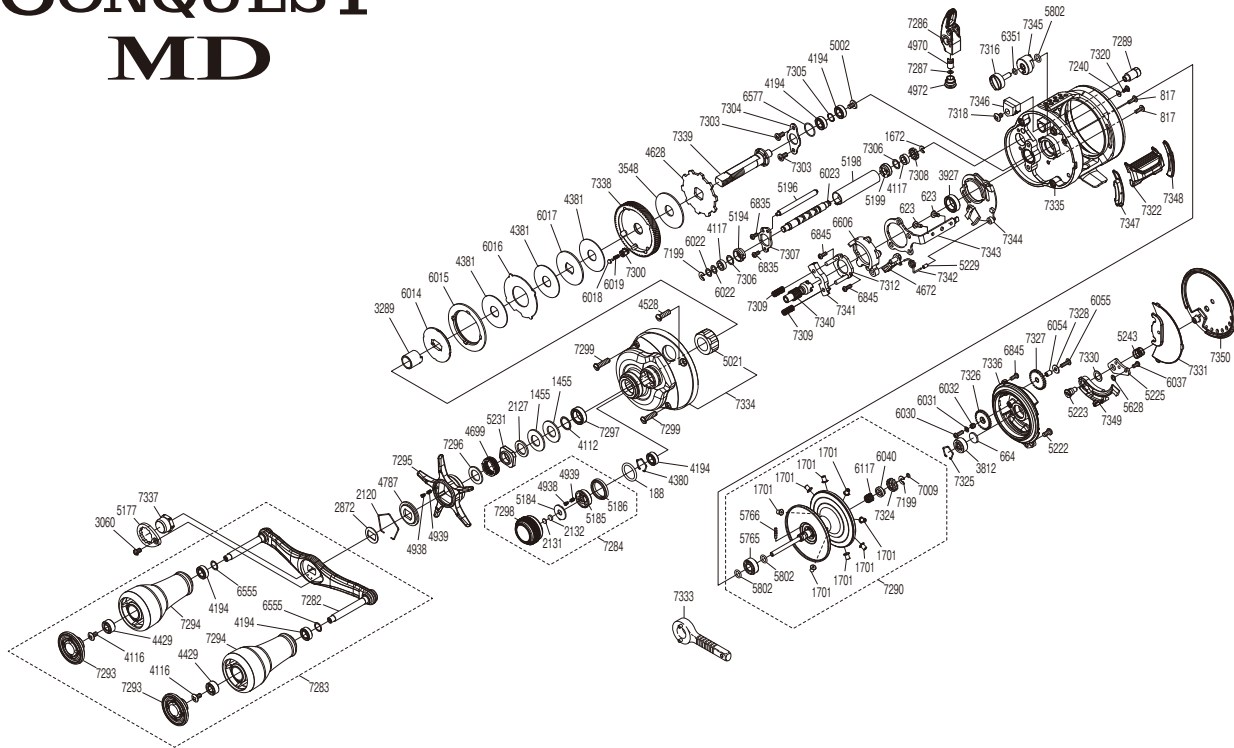


SHIMANO

CALCUTTA CONQUEST MD

23CQMD301XLH



(51RL643B41X)

The (5765) Bearing, (5766) Spool clutch pin, and (5021) Roller clutch cannot be replaced by the customer. To replace these parts, please request after-sales service.

Please note that the number of adjusting washers may not be the same as shown in the exploded views. (Adjustment will vary with each individual product.)

Part No.	Description	Part No.	Description	Part No.	Description
BNT0188	O Ring	BNT5223	B Side Plate Insert	BNT7296	Washer
BNT0623	Screw	BNT5225	Damper Bush	BNT7297	Ball Bearing
BNT0664	Spacer B	BNT5229	Clutch Pawl Spring Collar	BNT7298	Cast Control Cap
BNT0817	Screw	BNT5231	Star Drag Nut	BNT7299	Screw
BNT1455	Drag Spring Washer (H)	BNT5243	Damper Spring	BNT7300	Drag Click Pin Holder
BNT1672	E Lock	BNT5628	Washer	BNT7303	Screw
BNT1701	Brake Collar (Gray)	BNT5765	Ball Bearing	BNT7304	Drive Shaft Retainer
BNT2120	Click Plate Retainer	BNT5766	Spool Clutch Pin	BNT7305	Washer
BNT2127	Star Drag Spacer	BNT5802	O Ring	BNT7306	Washer
BNT2131	Cast Control Spacer	BNT6014	Pressure Plate	BNT7307	Worm Bushing Retainer
BNT2132	Cast Control Spacer	BNT6015	Drag Click Ratchet	BNT7308	Idle Gear C
BNT2872	Drive Shaft Shield	BNT6016	Eared Washer	BNT7309	Yoke Spring
BNT3060	Screw	BNT6017	Drag Washer	BNT7312	Clutch Cam Retainer
BNT3289	Roller Clutch Inner Tube	BNT6018	Drag Click	BNT7316	Br Dial
BNT3548	Drag Washer	BNT6019	Click Spring	BNT7318	Screw
BNT3812	Ball Bearing	BNT6022	Washer	BNT7320	Screw
BNT3927	Ball Bearing	BNT6023	Worm Shaft	BNT7322	Clutch Button Assembly
BNT4112	Washer	BNT6030	Screw	BNT7324	Idle Gear A
BNT4116	Screw	BNT6031	Washer	BNT7325	Bearing Retainer
BNT4117	Bushing	BNT6032	Idle Gear B Support	BNT7326	Idle Gear B
BNT4194	Ball Bearing	BNT6037	Screw	BNT7327	Idle Gear D
BNT4380	Retainer	BNT6040	Spool Shaft Cam	BNT7328	Washer
BNT4381	Drag Washer	BNT6054	Idle Gear D Support	BNT7330	Washer
BNT4429	Ball Bearing	BNT6055	Screw	BNT7331	B Side Plate Seal
BNT4528	Screw	BNT6117	Spool Shaft Spring	BNT7334	A Side Plate Assembly
BNT4628	Anti-Reverse Ratchet	BNT6351	O Ring	BNT7335	Frame Assembly
BNT4672	Clutch Pawl	BNT6555	Washer	BNT7336	Dial Case Assembly
BNT4699	Star Drag Spring	BNT6577	O Ring	BNT7337	Handle Nut
BNT4787	Star Drag Click Plate	BNT6606	Clutch Cam	BNT7338	Drive Gear
BNT4938	Click Pin	BNT6835	Screw	BNT7339	Drive Shaft
BNT4939	Click Spring	BNT6845	Screw	BNT7340	Pinion Gear
BNT4970	Line Guide Pawl	BNT7009	O Ring	BNT7341	Yoke
BNT4972	Pawl Cap	BNT7199	E Lock	BNT7342	Clutch Pawl Spring
BNT5002	Screw	BNT7240	Washer	BNT7343	Clutch Plate
BNT5021	Roller Clutch Bearing	BNT7282	Handle Shank Assembly	BNT7344	Clutch Guard
BNT5177	Handle Nut Plate	BNT7283	Handle Assembly	BNT7345	Brake Cam
BNT5184	Cast Control Click Plate	BNT7284	Cast Control Cap Assembly	BNT7346	Brake Holder
BNT5185	Click Pin Holder	BNT7286	Line Guide Pawl Holder Assembly	BNT7347	Clutch Bar Guide B
BNT5186	Cast Control Click Holder	BNT7287	Washer	BNT7348	Clutch Bar Guide A
BNT5194	Worm Bushing A	BNT7289	Magnet Holder Assembly	BNT7349	B Side Plate Cam Lever
BNT5196	Level Wind Guide	BNT7290	Spool Assembly	BNT7350	B Side Plate
BNT5198	Level Wind Guard	BNT7293	Handle Knob Seal		
BNT5199	Worm Bushing B	BNT7294	Handle Knob		
BNT5222	Screw	BNT7295	Star Drag	BNT7333	Wrench (Accessory)