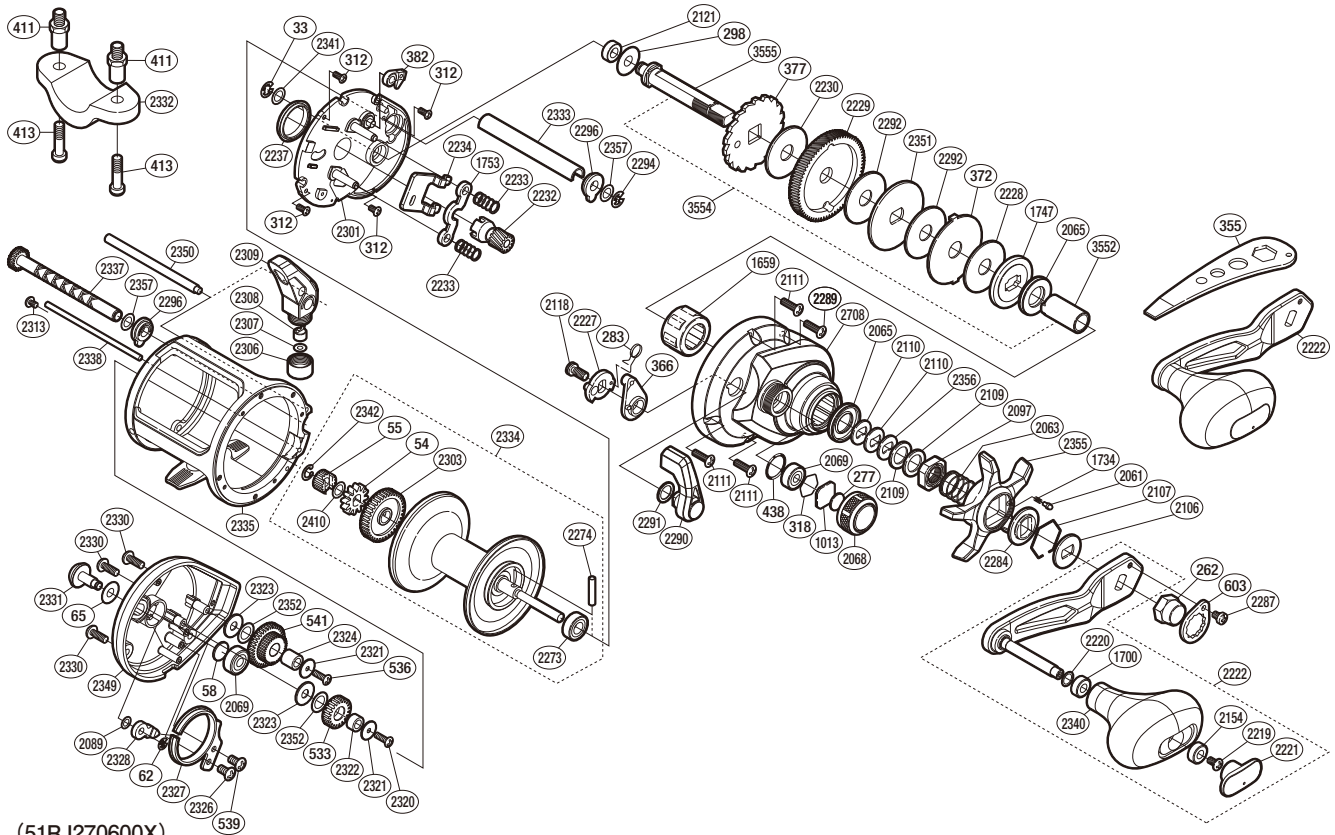


# SHIMANO

## TEKOTA

## TEK600HGA



(51RJ270600X)

#	Part No.	Description	#	Part No.	Description	#	Part No.	Description
33	105NG	E Lock	2107	10KXW	Click Plate Retainer	2320	10LCP	Screw
54	104EX	Click Gear	2109	10J1P	Star Drag Spacer	2321	10DT6	Idle Gear B Spacer B
55	10J7E	Idle Gear A	2110	109LA	Coned Disc Spring (8h)	2322	101JJ	Idle Gear B Support
58	10GEU	Spacer B	2111	10L6L	Screw	2323	101JK	Idle Gear B Spacer A
62	105NK	E Lock	2118	10MFB	Screw	2324	1026K	Idle Gear D Support
65	104H2	Spacer A	2121	10MAT	Drive Shaft Bushing	2326	103KS	Screw
262	10FT1	Handle Nut	2154	10EU0	Handle Knob Bushing A	2327	10T7W	Click Spring
277	10896	Cast Control Spacer	2219	10LFA	Screw	2328	10T84	Click Pawl
283	10JYU	Clutch Spring	2220	10HEP	Washer	2330	10L6D	Screw
298	10588	Washer	2221	101B8	Handle Knob Seal	2331	100GQ	Click Button
312	10MPP	Screw	2222	10DHY	Handle Assembly	2333	10T8R	Level Wind Guard
318	10GGM	Bearing Retainer	2227	10TX9	Clutch Cam Assembly	2334	1010W	Spool Assembly
366	10L2B	Eccentric Cam Bushing	2228	101BA	Drag Washer D	2335	10T8P	Frame
372	10KQH	Eared Washer (E)	2229	101KA	Drive Gear	2337	100HR	Worm Shaft Unit
377	10DAG	Anti-reverse Ratchet	2230	1025A	Drag Washer A	2338	10T8S	Stabilizer Bar B
382	10MW8	Anti-reverse Pawl	2232	10DJA	Pinion Gear	2340	10T8A	Handle Knob
438	108WK	O Ring	2233	101MH	Yoke Spring	2341	10T89	Washer
533	10NXF	Idle Gear B	2234	10DJC	Yoke Plate	2342	10KHN	Idle Gear Retainer
536	103BY	Screw	2237	101B3	Frame Center Seal	2349	10SGF	Left Side Plate
539	10QG5	Screw	2273	108PE	Ball Bearing	2350	100D4	Stabilizer Bar A
541	10NXK	Idle Gear D	2274	10MGR	Spool Clutch Pin	2351	101KH	Key Washer (C)
603	10LMC	Handle Nut Plate	2284	10J26	Star Drag Click Plate	2352	10AG4	Washer
1013	1085F	Spool Tension Spacer	2287	10LLU	Screw	2355	10176	Star Drag
1659	10F37	Roller Clutch Bearing	2289	10L6A	Screw	2356	109F5	Washer
1700	104UJ	Handle Knob Bushing	2290	1010E	Clutch Lever Unit	2357	101V7	Washer
1734	10BT2	Click Spring	2291	10272	Smoother	2410	10S0Q	Washer
1747	10D56	Pressure Plate	2292	1025L	Drag Washer (B)	2708	10SUR	Right Side Plate Assembly
1753	10484	Yoke	2294	10KHG	E Lock	3552	10DH4	Roller Clutch Inner Tube
2061	10MFC	Click Pin (B)	2296	100GP	Worm Bushing A	3554	10RV7	Drive Shaft Inner Tube Set
2063	10A70	Star Drag Spring	2301	10273	Right Side Plate Set Assembly	3555	10DH3	Drive Shaft
2065	10C69	Roller Clutch Water Proof	2303	100H9	Counter Gear A			
2068	10JVV	Cast Control Cap	2306	100GB	Pawl Cap	411	1046R	Rod Clamp Nut (Accessory)
2069	10KAF	Ball Bearing	2307	10TAT	Washer	413	10A7C	Rod Clamp Bolt (Accessory)
2089	10GHP	Washer	2308	10BHQ	Line Guide Pawl	2332	10EUN	Rod Clamp (Accessory)
2097	10A3X	Star Drag Nut	2309	100GM	Line Guide Pawl Holder Assembly			
2106	107QN	Drive Shaft Shield	2313	10MPD	Screw	355	13X98	Wrench (Accessory)

Please note that the number of adjusting washers may not be the same as shown in the exploded views.  
(Adjustment will vary with each individual product.)