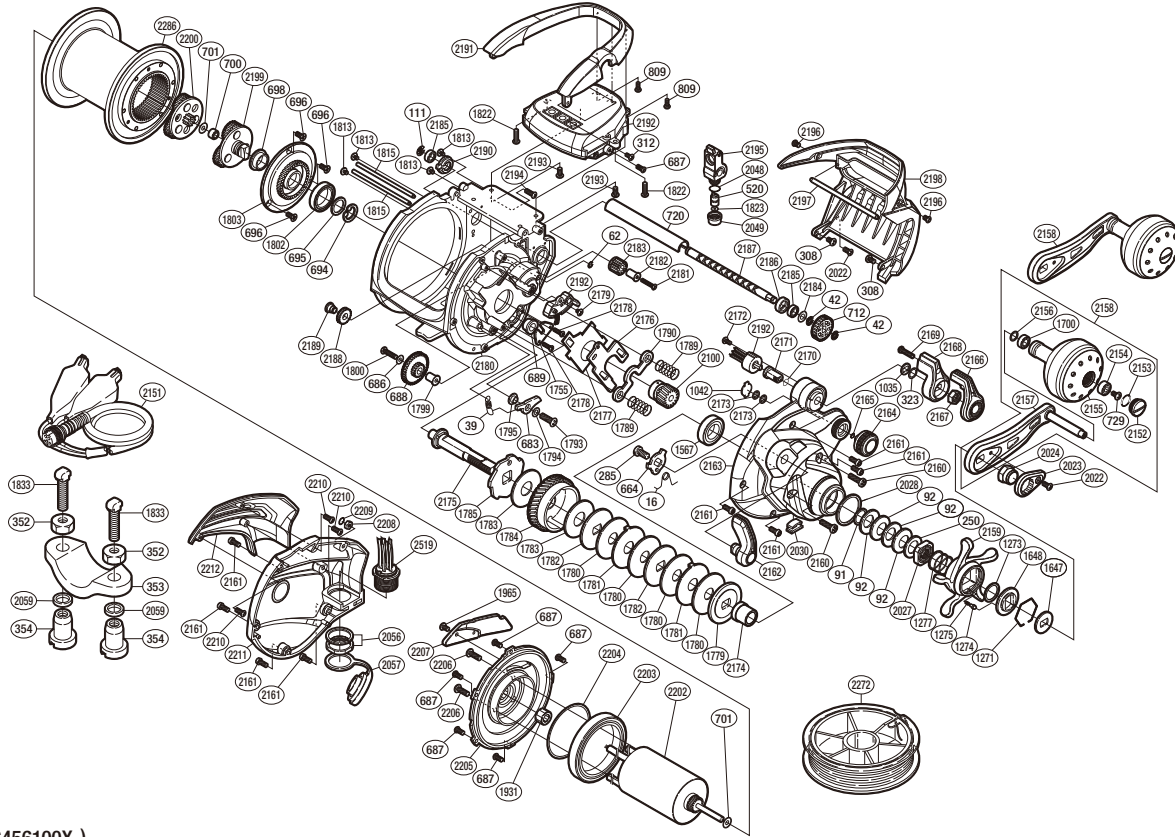


SHIMANO

ForceMaster

FM-6000



(51RG456100X)

#	Part No.	Description	#	Part No.	Description	#	Part No.	Description
16	10JYX	Clutch Spring	1790	1047Y	Yoke	2176	10NPZ	Clutch Plate
39	10CBS	Anti-Reverse Pawl Spring	1793	10MG8	Screw	2177	10AYF	Clutch Plate Washer
42	105NE	E Lock	1794	10GCY	Washer	2178	10MT7	Screw
62	105NK	E Lock	1795	10PKN	Anti-Reverse Pawl Cover	2179	10MPU	Screw
91	104L5	Washer	1799	10PYX	Worm Idle Gear Bushing B	2180	10KGQ	Frame
92	1052E	Coned Disc Spring	1800	103LZ	Screw	2181	10MTE	Screw
111	105NJ	E Lock	1802	108PG	Ball Bearing	2182	10PYV	Worm Idle Gear Bushing
250	10BR1	Star Drag Washer	1803	10HSK	Spool Plate	2183	10PWR	Worm Idle Gear C
285	10FBM	Screw	1813	10MPG	Screw	2184	10GFA	Washer
308	10LSK	Screw	1815	10PCN	Stabilizer Bar	2185	104K3	Ball Bearing
312	10MPP	Screw	1822	10M2P	Screw	2186	10NFL	Worm Bushing A
323	109R3	Washer	1823	10707	Washer	2187	10N54	Worm Shaft
520	10FFZ	Line Guide Pawl	1931	10F5G	Roller Clutch Bearing	2188	10LWC	Worm Idle Gear A
664	1084C	Clutch Cam	1965	1055F	Screw	2189	10B3N	Idle Gear B Shaft
683	10PFV	Anti-Reverse Pawl	2022	103GK	Screw	2190	104T3	Worm Bushing B
686	105EN	Washer	2023	10QL6	Rotor Nut Lock Plate	2191	10AR4	Cross Bar
687	103GP	Screw	2024	10FT0	Handle Nut	2192	10TR4	Counter Unit
688	10PSZ	Worm Idle Gear B	2027	10A3P	Star Drag Nut	2193	103GM	Screw
689	10BQ3	Drive Shaft Bushing	2028	10G6V	Star Drag Spacer	2194	103CG	Screw
694	105S8	C Lock	2030	106NV	Line Clip	2195	10P47	Line Guide
695	109RA	Washer	2048	108WQ	O Ring	2196	103GZ	
696	10ML5	Screw	2049	10FJD	Pawl Cap	2197	10PDW	
698	10MGW	Plate Bushing (Large)	2056	10BG5	Socket Nut Set	2198	10GUB	Level Wind Protector
700	10MCW	Plate Bushing (Small)	2057	104SL	Socket Cap	2199	10MM8	Reduction Gear Plate B
701	109R9	Washer	2100	1066Y	Pinion Gear	2200	10MHY	Reduction Gear Plate A
712	10N99	Worm Gear	2152	10B2B	Handle Knob Seal	2202	106JR	Motor
720	10NMQ	Level Wind Guard	2153	10LAB	O Ring	2203	104W2	Ball Bearing
729	103E9	Screw	2154	10EU0	Handle Knob Bushing A	2204	10GHR	Washer
809	103NH	Screw	2155	103WQ	Handle Knob	2205	10F31	Motor Holder
1035	10NAQ	Key Washer	2156	10GD4	Washer	2206	10M6V	Screw
1042	1085L	Cast Control Spacer	2157	109Z5	Handle Shank Assembly	2207	10QZ2	Motor Holder B
1271	10KXX	Click Plate Retainer	2158	103XG	Handle Assembly	2208	105N7	Nut
1273	10G6M	Washer	2159	108B3	Star Drag	2209	108W9	O Ring
1274	10BT0	Click Pin	2160	10PVP	Screw	2210	103DC	Screw
1275	10HZ6	Click Spring	2161	10A6G	Screw	2211	10GES	Left Side Plate
1277	10HZ2	Star Drag Spring	2162	10LOA	Clutch Lever	2212	10BF6	Left Side Plate 2
1567	10KXA	Ball Bearing	2163	10HWB	Right Side Plate	2286	100ZD	Spool Assembly
1647	107QM	Drive Shaft Shield	2164	10KT9	Cast Control Cap	2519	100XP	Socket Set
1648	10J27	Star Drag Click Plate	2165	10TNF	O Ring			
1700	104UJ	Handle Knob Bushing B	2166	10N74	Lever Switch Sticker			
1755	109VJ	Drive Shaft Retainer	2167	10NAS	Lever Switch Nut			
1779	10D4H	Pressure Plate	2168	10MUF	Lever Switch	352	105N9	Rod Clamp Nut B (Accessory)
1780	10LB6	Drag Washer	2169	10LSC	Screw	353	10AR5	Rod Clamp (Accessory)
1781	10LBB	Eared Washer	2170	109W6	O Ring	354	1046P	Rod Clamp Nut A (Accessory)
1782	10KZW	Key Washer	2171	10N78	Lever Insert Shaft	1833	10A79	Rod Clamp Bolt (Accessory)
1783	10CKR	Drag Washer	2172	103C0	Screw	2059	10B7V	Rod Clamp Nut Washer (Accessory)
1784	10Q9X	Drive Gear	2173	105SC	Cs Lock			
1785	10A2H	Anti-Reverse Ratchet	2174	10BT7	Drive Shaft Sleeve	2151	10FBT	Cable (Accessory)
1789	104BV	Yoke Spring	2175	10D6V	Drive Shaft	2272	10SB8	Bobbin With Line (Accessory)

Please note that the number of adjusting washers may not be the same as shown in the exploded views.
(Adjustment will vary with each individual product.)