

GOJO TFX™ DISPENSER INSTALLATION INSTRUCTIONS

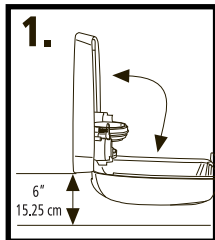
These instructions apply to GOJO®, PURELL®, PROVON® and MICRELL® brand TFX dispensers.

Please read all instructions carefully before loading the refill.

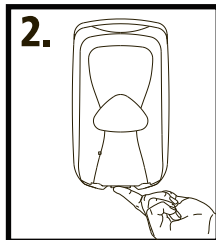
Do not install in locations where dispenser may be exposed to wet environments, such as showers or areas where walls are washed down.

Tape Installation

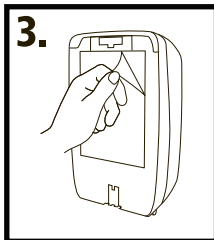
Should only be used for smooth, dry surfaces. Clean installation surface thoroughly. Allow surface to dry for 60 seconds. When installing on marlite wallboard, use scouring cleansing. Rinse and dry thoroughly.



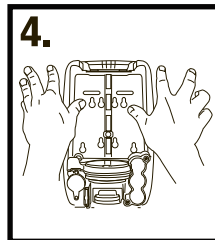
Install dispenser at least 6" above counter top.



Open dispenser by pushing release on bottom of dispenser.



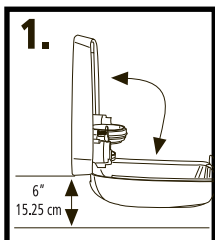
Peel paper off of installation tape, line up screws with anchors, and press firmly into position.



Press dispenser firmly onto mounting surface by applying pressure to the inside of backplate for 15 seconds. **Do not load refill for at least 24 hours.**

Fastener Installation

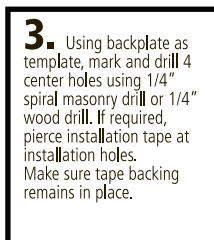
Use only on rough or smooth surfaces



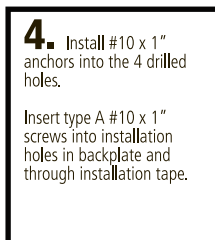
Install dispenser at least 6" above counter top.



Open dispenser by pushing release on bottom of dispenser.

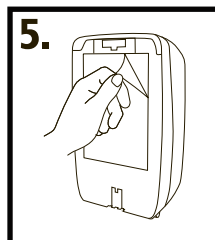


3. Using backplate as template, mark and drill 4 center holes using 1/4" spiral masonry drill or 1/4" wood drill. If required, pierce installation tape at installation holes. Make sure tape backing remains in place.

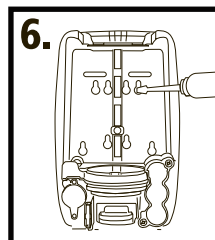


4. Install #10 x 1" anchors into the 4 drilled holes.

Insert type A #10 x 1" screws into installation holes in backplate and through installation tape.



Peel paper off of installation tape, line up screws with anchors, and press firmly into position.

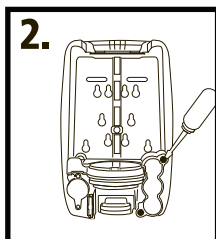


Tighten screws securely, being careful not to over-tighten.

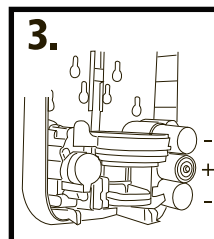
Battery Installation (batteries not included)



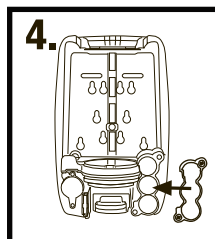
Open dispenser by pushing release on bottom of dispenser.



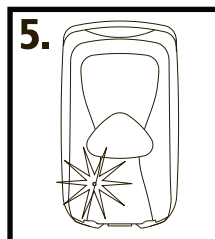
Remove two screws from the battery box cover using thumb screws or phillips screw driver.



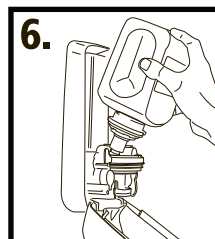
Use 3 high quality C-cell alkaline batteries. Do not mix old and new batteries. The use of re-chargeable batteries is not recommended.



Replace battery box cover. Be careful not to over-tighten screws.

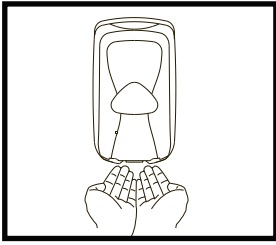


Close dispenser cover. Status light will blink green after dosing, indicating that batteries are correctly installed and dispenser is ready to accept refills.



Insert refill at slight angle into dispenser so nozzle is inside lock release.

Dispenser Use



1. Place palms approximately 2" below dispenser.
2. Product will be dispensed within 1 second of sensor activation.
3. To receive additional product, remove hands from below dispenser and repeat step 1.

Cleaning and Maintenance

- Clean exterior surfaces of the dispenser using warm water and mild soap.
- **DO NOT USE ABRASIVE CLEANERS.**
- Dry with a soft cloth

Troubleshooting

No dispense, Motor does not run

- Hands are not directly beneath sensor
- No refill is loaded
- Incorrect refill is loaded
- Batteries are not loaded, or are loaded incorrectly

No Dispense, Motor Runs

- Refill is empty or is loaded improperly
- Refill pump is not primed



GOJO Industries, Inc.
One GOJO Plaza, Suite 500
P.O. Box 991 • Akron, OH 44309-0991
Tel: 1-330-255-6000 • Toll-free: 1-800-321-9647
Fax: 1-800-FAX-GOJO

©2014. GOJO Industries, Inc. All rights reserved.