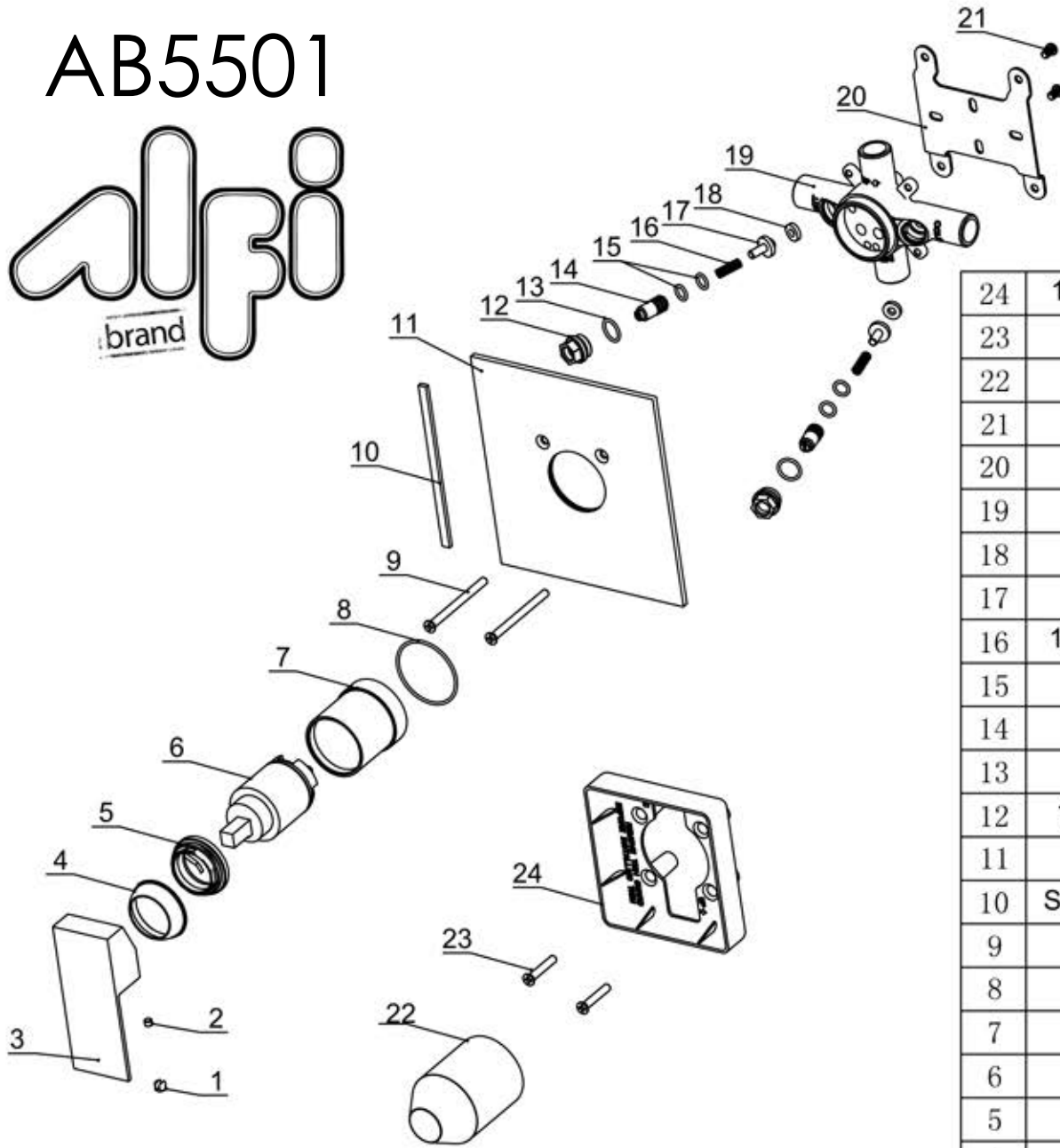


AB5501



24	100200560 Installation box	ABS	1	50020062930
23	M5*30 Cross bolt	Stainless steel	2	50060008300
22	2203 Protecting cover	HDPE	1	70030023529
21	M5*8 Cross bolt	Stainless steel	2	50060009500
20	100200560 Fitting seat	Q235	1	50020062601
19	100200790 Main body	ZCuZn40Pb2	1	10020095652
18	72188 Washer	NBR	2	70020018830
17	2075 Regulator tablet	H59	2	40060016252
16	12734 Pressure spring(0.4)	Stainless steel	2	50060030200
15	8*1.8"O" Ring	NBR	4	70010000530
14	2075 Cartridge	H59	2	40060016052
13	13.2*1.8"O" ring	NBR	2	70010004830
12	100200560 Cartridge seat	H59	2	40060101152
11	500100850-2563 Plate	H59	1	50010085001
10	Sponge sealing strip (6*3)	High density sponge	1	70030025530
9	M5*80 Cross bolt	Stainless steel	2	50060028400
8	45*1.8"O" ring	NBR	1	70010015430
7	2383 Cartridge ring	H59	1	40060073601
6	40H Cartridge	Subassembly	1	20060005900
5	2383 Cartridge nut	H59	1	40060073552
4	2325 Decorative cover	ABS	1	50010078101
3	2315 Handle	Zinc Alloy	1	20010010701
2	M5*4 Fitting screw	Stainless steel	1	50060012000
1	2508 Chrome cover	ABS	1	50010031101
No.	Description	Material	QTY	Item no.