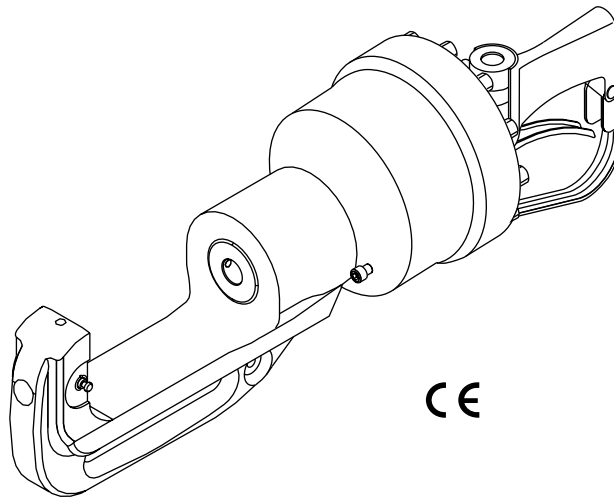


# SPECIFICATIONS AND PARTS

*Fairmont*<sup>®</sup>



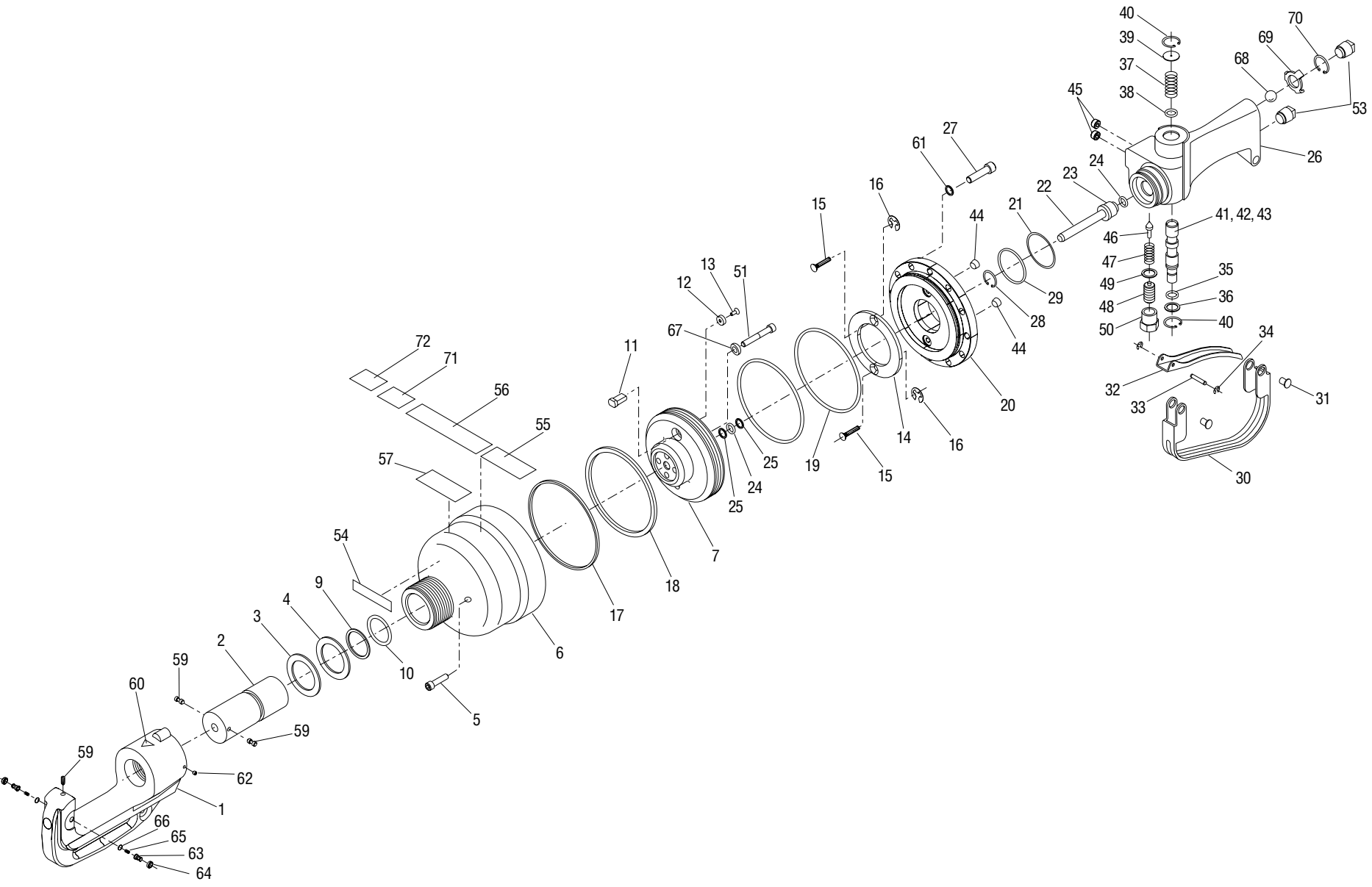
## **LPK1550** **Hydraulic Crimping Tool** **15 ton**

Serial Code FYF



**Read and understand** all of the instructions and safety information in this manual before operating or servicing this tool.

Illustration



**Parts List**

**LPK1550 Crimping Tool**

KEY	UPC NO. 78-3310-	PART NO.	DESCRIPTION	QTY.	KEY	UPC NO. 78-3310-	PART NO.	DESCRIPTION	QTY.
1	49352	49352	C-Head Unit (includes items 59, 60, 62-66) .....	1	50	48260	48260	Cap, Relief Valve .....	1
2	49357	49357	Ram .....	1	51	54163	905 4163.4	Screw, Cap, 1/4-20 x 1.625, Socket .....	4
3*	05430	500 5430.9	Wiper .....	1	52*	54761	905 4761.6	Backup Ring .....	1
4*	05315	500 5315.9	Wiper .....	1	53	41432	F013636	Plug, Port .....	2
5	50581	905 0581.6	Screw, Cap, 1/4-20 x 1.00", Skt Hd Cap ...	1	54	49947	49947	Decal, Specifications .....	1
6	49359	49359	Cylinder (includes items 54-57, 71-72) .....	1	55	48734	48734	Decal, OC/CC Setting .....	1
7	48795	48795	Piston .....	1	56	49946	49946	Decal, Warning .....	1
9*	50896	905 0896.3	Backup Ring, 1.37 x 1.62 x .121" .....	1	57	41547	F015482K1	Decal, Fairmont .....	1
10*	50897	905 0897.1	O-Ring, 1.37 x 1.62 x .125" .....	1	59	53962	905 3962.1	Plunger, Spring #10-32 x .500 .....	3
11	43546	156555	Spool, Shuttle .....	2	60	06214	500 6214.0	Decal, Pinch Warning .....	1
12	43547	156556	Washer, Shuttle .....	2	61	54813	905 4813.2	Washer, Flat .344 x .688 x .060" .....	16
13	43548	F030021	Screw, Cap, #6-32 x .375", Flat Head Socket .....	2	62	44045	F021889	Screw, Set #10-32 x .187 Skt Hd Set .....	1
14	48727	48727	Ring, Shuttle Stop .....	1	63	05434	500 5434.1	Button, Die Retainer .....	2
15	48881	48881	Screw .....	2	64	05435	500 5435.0	Nut, Retaining .....	2
16*	48741	48741	Retaining Ring .....	2	65	05433	500 5433.3	Spring, Compression .....	2
17*	54758	905 4758.6	Ring .....	1	66	05432	500 5432.5	Disc, Flat .....	2
18*	54759	905 4759.4	Seal Unit .....	1	67	54913	905 4913.9	Washer, Conical 1/4" .....	4
19*	54760	905 4760.8	O-Ring, 5.125" .....	1	68	41873	F021607	Ball, Steel, 5" .....	1
20	49898	49898	Cover .....	1	69	49234	49234	Stop, Ball .....	1
21	48737	48737	Shim, Handle .....	6 (Max)	70*	41600	F016737	Retaining Ring .....	1
22	43554	156569	Tube .....	1	71	49506	49506	Decal, CE .....	1
23	42685	L060600	Carrier, Seal .....	1	72	49959	49959	Decal, Sound .....	1
24*	41331	F010777	O-Ring, .375 x .500 x .062"-70 .....	2	<b>Repair Kit</b>				
25*	43545	F024931	Backup Ring, .382 x .486 x .045" .....	2	*	49358	49358	Packing Kit (includes items marked with an asterisk) .....	1
26	48736	48736	Handle .....	1	<b>Decals</b>				
27	41338	F010901	Screw, Cap, 5/16-18 x 1.25", Socket Head .....	16	49947	49947	Decal, Specifications .....	1	
28*	41648	F017595	Retaining Ring, .750" .....	1	48734	48734	Decal, OC/CC Setting .....	1	
29*	44044	F022786	O-Ring, 1.625 x 1.750 x .062"-70 .....	1	49946	49946	Decal, Warning .....	1	
30	43699	156559	Strap, Trigger .....	1	41547	F015482K1	Decal, Fairmont .....	1	
31	43701	F021676	Screw, Cap, #10-32 x .375", Button Socket Head .....	4	06214	500 6214.0	Decal, Pinch Warning .....	1	
32	42576	L060106	Trigger .....	1	49506	49506	Decal, CE .....	1	
33	42547	L060058	Pivot, Trigger .....	1	49959	49959	Decal, Sound .....	1	
34*	42827	L085019	Retaining Ring .....	2					
35*	41489	F015257	O-Ring, .437 x .562 x .062"-68 .....	1					
36	43401	170236	Washer .....	1					
37	42865	L089019	Spring, Valve Plunger .....	1					
38*	41488	F015255	O-Ring, .562 x .750 x .093"-68 .....	1					
39	41095	138312	Cap .....	1					
40*	41712	F018511	Retaining Ring, .750" .....	2					
41	48472	48472	Spool .....	1					
42	43556	170237	Plug, Spool .....	1					
43*	41343	F011060	O-Ring, .250 x .375 x .062"-90 .....	1					
44*	54247	905 4247.9	Nut, 1/4-20, Hydra-Lok Seal .....	2					
45	41695	F018357	Plug, Pipe, 1/8" NPTF .....	2					
46	30146	503 0146.2	Pin, Valve, .305 x .870" .....	1					
47	40692	131099	Spring, Unloading Valve .....	1					
48	48261	48261	Screw, Set, 1/2-20, Adjusting .....	1					
49*	40646	130825	Washer, Flat, .514 x .030, Copper .....	1					

**Other Publications****Tool Owners/Users**

Operation Manual: Publication 999 3224.5

SAE Standard J1273 (Hose and Hose Assemblies): Publication 999 3032.3

**Authorized Greenlee Fairmont Service Centers**

Service Manual: Publication 999 3228.8

**Purpose**

This manual is intended to familiarize all personnel with the specifications and parts for the following Greenlee Fairmont tools:

LPK1550 / 49355      Serial Code FYF

Keep this manual available to all personnel.

Replacement manuals are available upon request at no charge.

All specifications are nominal and may change as design improvements occur. Greenlee Textron shall not be liable for damages resulting from misapplication or misuse of its products.

***KEEP THIS MANUAL***

**Specifications**

**Crimping Tool**

Type of Hydraulic System .....	Open-Center or Closed-Center
Hydraulic Ports	
Pressure .....	3/4–16 UNF SAE O-ring Boss
Tank .....	3/4–16 UNF SAE O-ring Boss
Stroke (without dies) .....	58 mm (2.28")
Crimping Force @ 103 bar (1500 psi) .....	133 kN (30,000 lbs)
Noise Levels	
L <sub>WA</sub> (Sound Power Level) .....	55.5 dB
L <sub>pCpeak</sub> (Peak Emission Sound Pressure Level) .....	68.8 dB
Vibration .....	3.15 ms <sup>2</sup>
Mass/Weight .....	13.0 kg (28.6 lbs)
Length .....	605 mm (23.8")
Width .....	165 mm (6.5")

**Hydraulic Power Source**

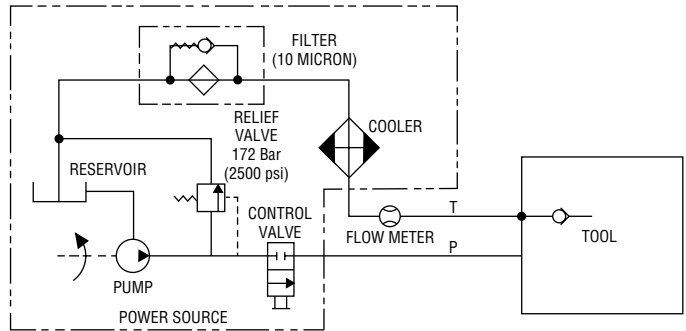
<b>⚠ WARNING</b>
<p>Do not exceed the following hydraulic power source maximums:</p> <ul style="list-style-type: none"> <li>• Hydraulic flow: 34.1 l/min (9 gpm).</li> <li>• Pressure relief setting: 172 bar (2500 psi).</li> <li>• Back pressure: 13.8 bar (200 psi).</li> </ul> <p>Failure to observe this warning can result in severe injury or death.</p>

Type of Hydraulic System .....	Open-Center or Closed-Center
Flow	
Minimum .....	11.4 l/min (3 gpm)
Recommended .....	22.7 l/min (6 gpm)
Maximum .....	34.1 l/min (9 gpm)
Pressure Relief Setting	
Minimum .....	103 bar (1500 psi)
Maximum .....	172 bar (2500 psi)
Back Pressure (Maximum)* .....	13.8 bar (200 psi)
Filtration .....	10 Micron (Nominal)

\* 13.8 bar (200 psi) is the maximum agreed standard back pressure for the HTMA (Hydraulic Tool Manufacturers Association). Greenlee Fairmont tool will operate satisfactorily at this standard.

1. Maximum hydraulic fluid temperature must not exceed 60 °C (140 °F). A sufficient oil cooling capacity is needed to limit the hydraulic fluid temperature.
2. Hydraulic flow must not exceed 34.1 l/min (9 gpm). Install a flow meter in the return line to measure the rate of hydraulic flow before using the tool.
3. Pressure relief valve setting must not exceed 172 bar (2500 psi) at your tool's maximum flow. Locate the pressure relief valve in the supply circuit to limit excessive hydraulic pressure to the tool.

**Hydraulic Schematic**



**Recommended Hydraulic Fluids**

Use any non-detergent, petroleum-based hydraulic fluid which meets the following specifications or HTMA specifications.

S.U.S. @:	
38 °C (100 °F) .....	140 to 225
99 °C (210 °F) .....	40 minimum
Flash Point .....	170 °C (340 °F) minimum
Pour Point .....	-34 °C (-30 °F) minimum

# **GREENLEE®**

A Textron Company

4455 Boeing Drive, Rockford, IL 61109-2988 USA

Customer Service (International): 815-397-7070 • Fax: 815-397-9247

Customer Service (North America): 800-435-0786 • USA Fax: 800-451-2632, 815-397-1865 • Canada Fax: 800-524-2853

Greenlee Textron is a subsidiary of Textron Inc.

**[www.greenlee.com](http://www.greenlee.com)**

Printed in USA