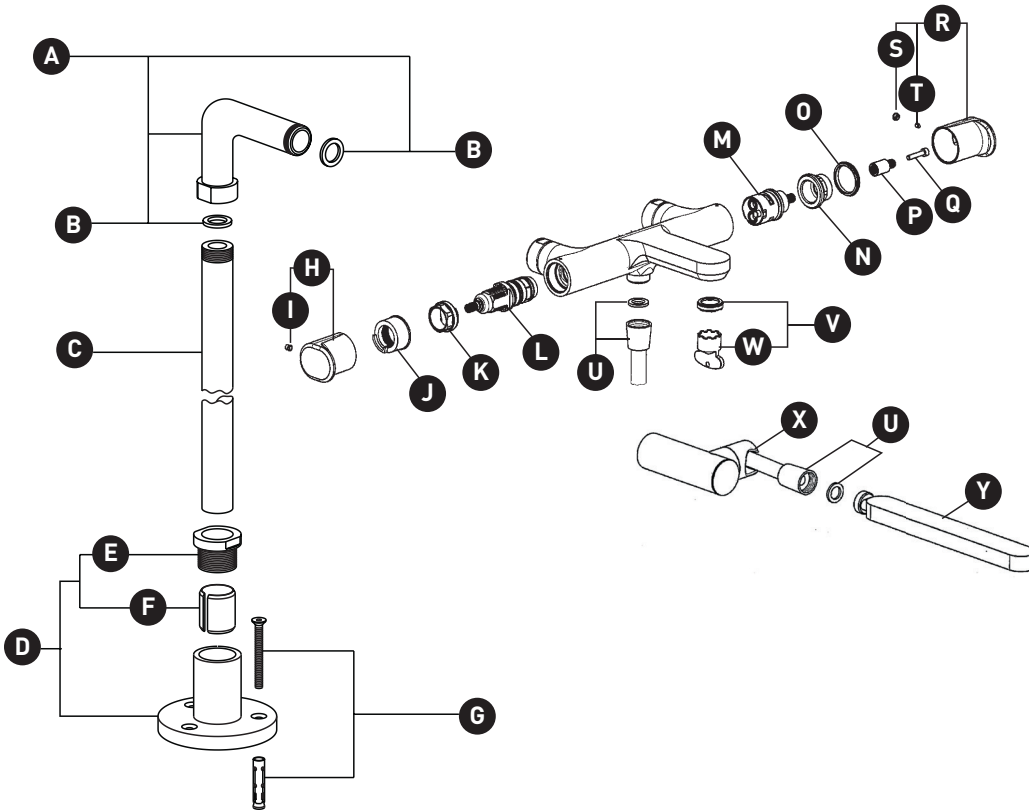


ORDER BY PART NUMBER

ILLUSTRATED PARTS

LVKIT2111N

Meda™ Floor Mount Tub Filler



| ID | Kit Number | Finish |
|----|------------|-----------|
| A* | ZZ937500 | See below |
| B | ZZ926890 | N/A |
| C* | ZZ943550 | See below |
| D* | ZZ995780 | See below |
| E* | ZZ943570 | See below |
| F* | ZZ943580 | N/A |
| G | ZZ94343000 | N/A |
| H* | ZZ965970 | See below |
| I | ZZ965960 | N/A |
| J | ZZ965950 | N/A |
| K | ZZ965940 | N/A |
| L | ZZ9C428021 | N/A |
| M | ZZ965910 | N/A |
| N | ZZ965890 | N/A |
| O | ZZ965880 | N/A |
| P | ZZ965870 | N/A |
| Q | ZZ965860 | N/A |
| R* | ZZ965850 | See below |
| S* | ZZ933710 | See below |
| T | ZZ933280 | N/A |
| U* | ZZ948630 | See below |
| V | ZZ965820 | N/A |
| W | ZZ965830 | N/A |
| X* | ZZ982650 | See below |
| Y* | DS014250 | See below |

***Finish Determined by Suffix**

| Finish | Description |
|--------|-----------------|
| APC | Polished Chrome |
| PN | Polished Nickel |
| STN | Satin Nickel |

For warranty or additional information, contact:

U.S.A.
houseofrohl.com/support
1-800-777-9762

QUEBEC / MARITIMES / WESTERN CANADA
QUÉBEC / MARITIMES / OUEST CANADIEN
QUEBEC / MARITIMOS / CANADA OCCIDENTAL
houseofrohl.ca/support
1-866-473-8442

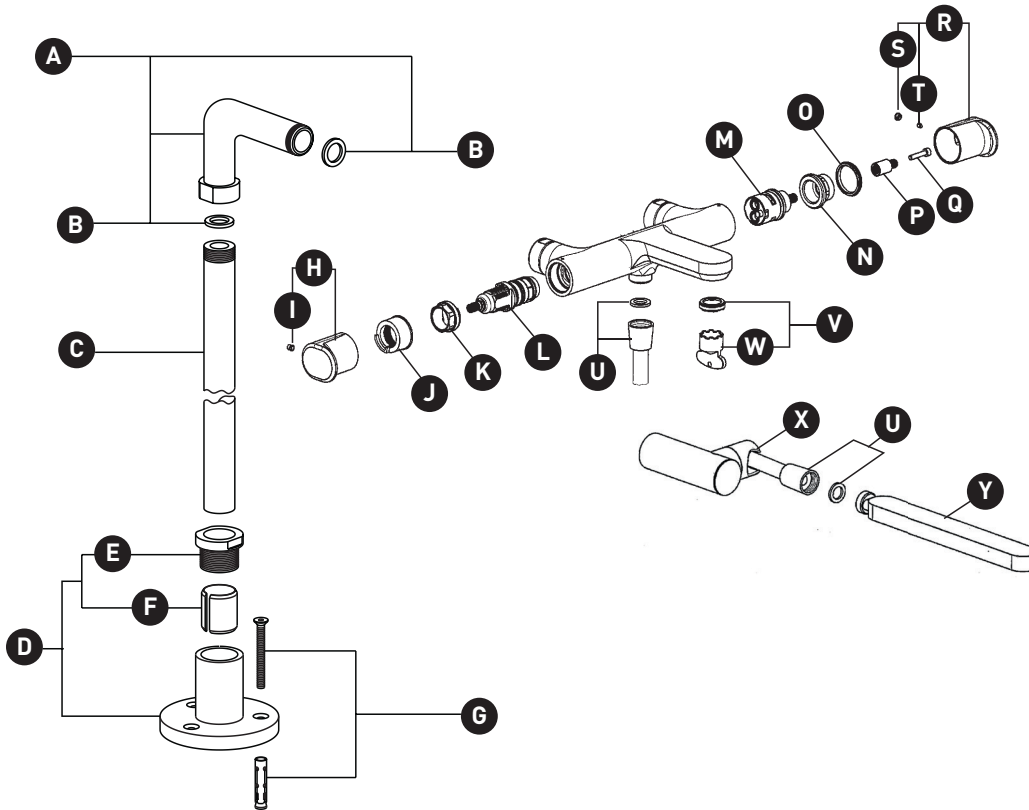
ONTARIO
houseofrohl.ca/support
1-800-287-5354

VEUILLEZ EFFECTUER VOTRE COMMANDE
PAR NO DE RÉFÉRENCE

ILLUSTRATIONS DES PIÈCES

LVKIT2111N

Robinet de bain thermostatique exposé
fixé au sol avec douchette et colonnettes
Meda™



| ID | Référence du kit | Finition |
|----|------------------|-----------------|
| A* | ZZ937500 | Voir ci-dessous |
| B | ZZ926890 | N/A |
| C* | ZZ943550 | Voir ci-dessous |
| D* | ZZ995780 | Voir ci-dessous |
| E* | ZZ943570 | Voir ci-dessous |
| F* | ZZ943580 | N/A |
| G | ZZ94343000 | N/A |
| H* | ZZ965970 | Voir ci-dessous |
| I | ZZ965960 | N/A |
| J | ZZ965950 | N/A |
| K | ZZ965940 | N/A |
| L | ZZ9C428021 | N/A |
| M | ZZ965910 | N/A |
| N | ZZ965890 | N/A |
| O | ZZ965880 | N/A |
| P | ZZ965870 | N/A |
| Q | ZZ965860 | N/A |
| R* | ZZ965850 | Voir ci-dessous |
| S* | ZZ933710 | Voir ci-dessous |
| T | ZZ933280 | N/A |
| U* | ZZ948630 | Voir ci-dessous |
| V | ZZ965820 | N/A |
| W | ZZ965830 | N/A |
| X* | ZZ982650 | Voir ci-dessous |
| Y* | DS014250 | Voir ci-dessous |

***Finition déterminée par le Suffixe**

| Finition | Description |
|----------|---------------|
| APC | Chrome poli |
| PN | Nickel poli |
| STN | Nickel satiné |

For warranty or additional information, contact:

U.S.A.
houseofrohl.com/support
1-800-777-9762

QUEBEC / MARITIMES / WESTERN CANADA
QUÉBEC / MARITIMES / OUEST CANADIEN
QUEBEC / MARITIMOS / CANADA OCCIDENTAL
houseofrohl.ca/support
1-866-473-8442

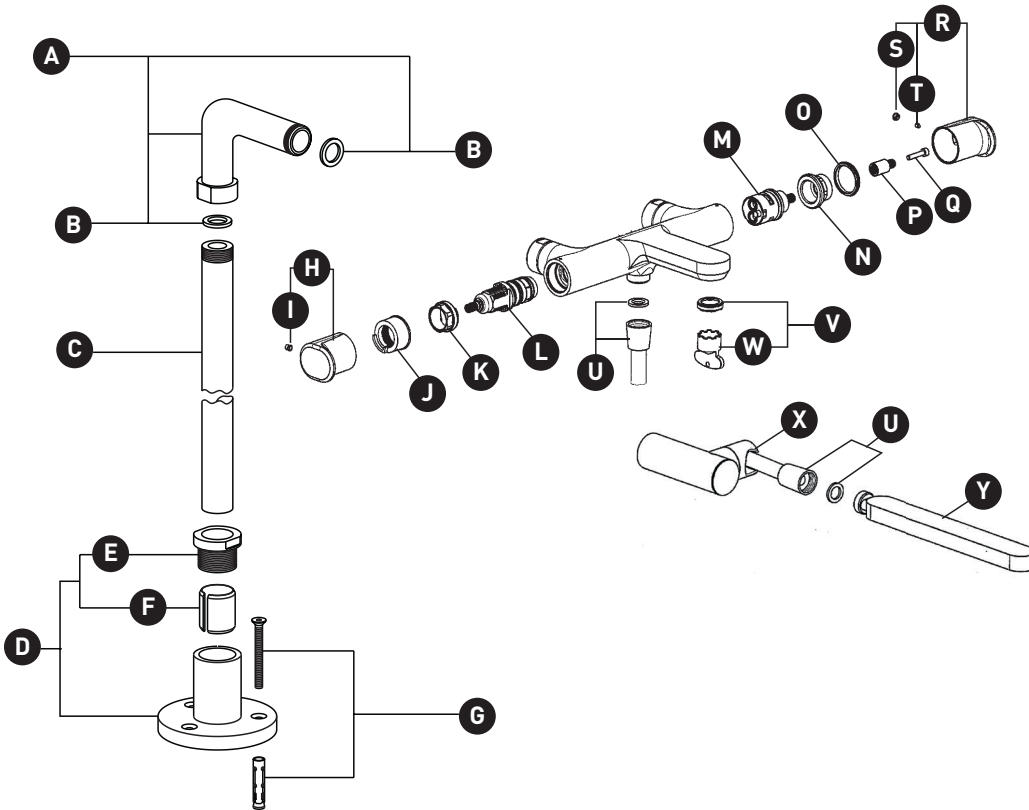
ONTARIO
houseofrohl.ca/support
1-800-287-5354

PEDIR POR NÚMERO DE REFERENCIA

PIEZAS ILUSTRADAS

LVKIT2111N

Llenador de bañera para montaje en piso Meda™



| ID | Referencia del kit | Acabado |
|----|--------------------|---------------|
| A* | ZZ937500 | Ver más abajo |
| B | ZZ926890 | N/A |
| C* | ZZ943550 | Ver más abajo |
| D* | ZZ995780 | Ver más abajo |
| E* | ZZ943570 | Ver más abajo |
| F* | ZZ943580 | N/A |
| G | ZZ94343000 | N/A |
| H* | ZZ965970 | Ver más abajo |
| I | ZZ965960 | N/A |
| J | ZZ965950 | N/A |
| K | ZZ965940 | N/A |
| L | ZZ9C428021 | N/A |
| M | ZZ965910 | N/A |
| N | ZZ965890 | N/A |
| O | ZZ965880 | N/A |
| P | ZZ965870 | N/A |
| Q | ZZ965860 | N/A |
| R* | ZZ965850 | Ver más abajo |
| S* | ZZ933710 | Ver más abajo |
| T | ZZ933280 | N/A |
| U* | ZZ948630 | Ver más abajo |
| V | ZZ965820 | N/A |
| W | ZZ965830 | N/A |
| X* | ZZ982650 | Ver más abajo |
| Y* | DS014250 | Ver más abajo |

***Acabado determinado por el sufijo**

| Acabado | Descripción |
|---------|-----------------|
| APC | Cromo pulido |
| PN | Níquel pulido |
| STN | Níquel satinado |

For warranty or additional information, contact:

U.S.A.
houseofrohl.com/support
1-800-777-9762

QUEBEC / MARITIMES / WESTERN CANADA
QUÉBEC / MARITIMES / OUEST CANADIEN
QUEBEC / MARITIMOS / CANADA OCCIDENTAL
houseofrohl.ca/support
1-866-473-8442

ONTARIO
houseofrohl.ca/support
1-800-287-5354