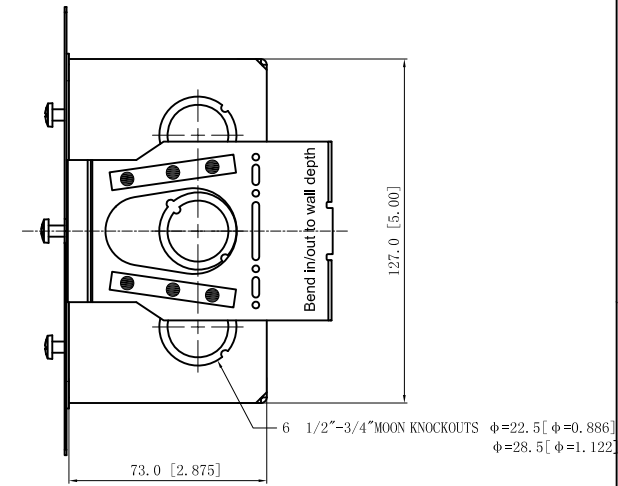
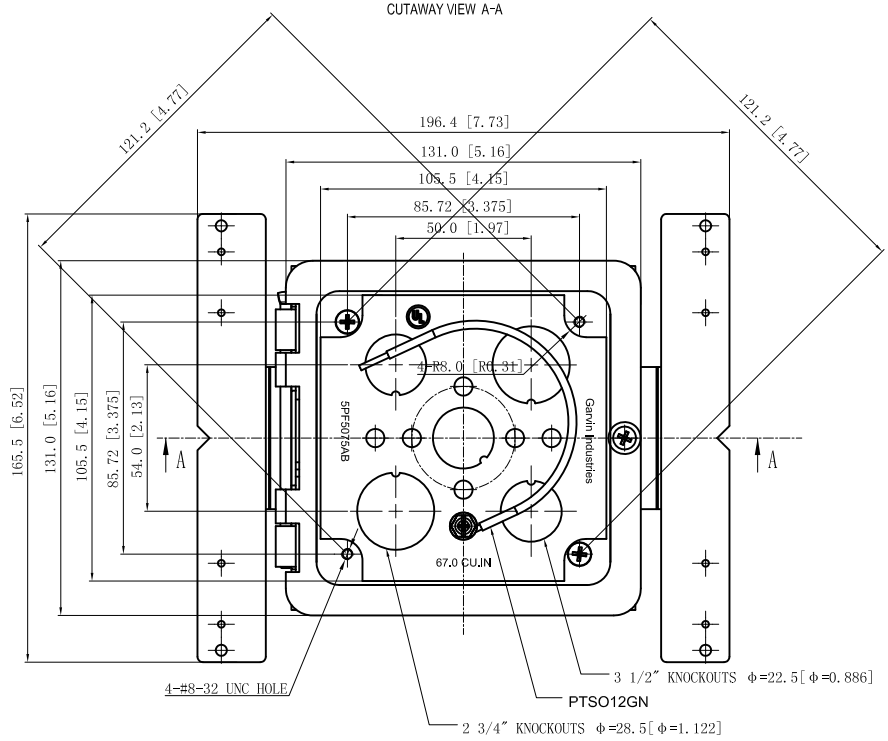
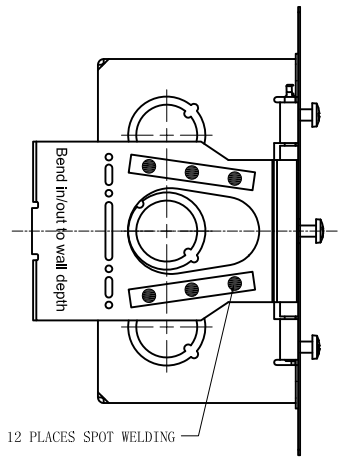
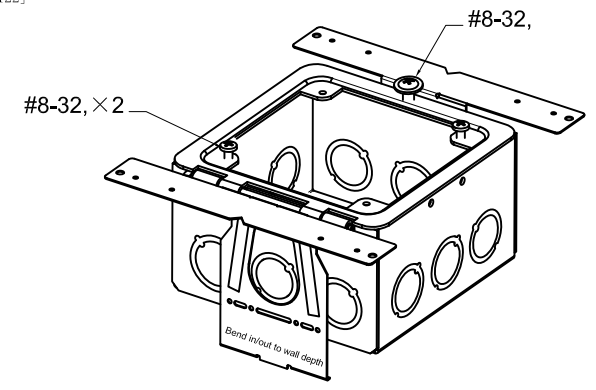
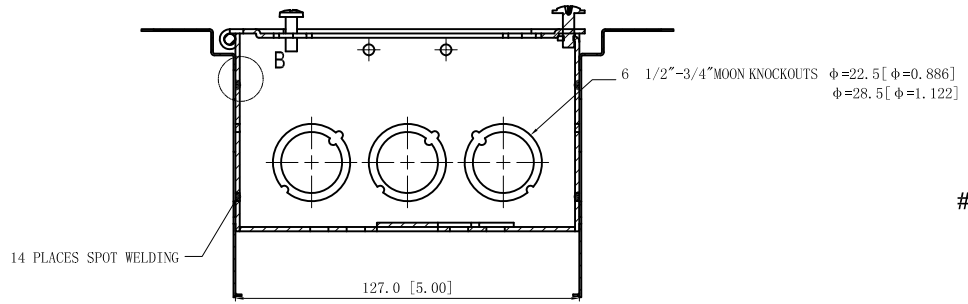


SIDES	BOTTOM
12 1/2"-3/4" KNOCKOUTS	3 1/2" KNOCKOUTS
	2 3/4" KNOCKOUTS
2 PCS 8-32×1/2 Screws Installed	
1 PCS 8-32×3/8 Screws Installed	
Material:Steel-0.0625"-G60 Galvanized	



This data sheet is for reference only. GARVIN INDUSTRIES reserves the right to make changes to the design without prior notice.

DESCRIPTION
TRADE REFERENCE TERMS

STANDARD PACKING	<h1>GARVIN INDUSTRIES</h1>		
	TITLE 5" Square × 2.875" Deep Metal Bracket Box		
	SIZE	DWG NO.	REV
	A4	5PF5075AB	E
DATA SHEET			
www.garvinindustries.com			