



## RC-E25, RC-E30, RC-E50 Rice Cooker

**This manual contains important information regarding your *Admiral Craft* unit. Please read this manual thoroughly prior to equipment set-up, operation and maintenance. Failure to comply with regular maintenance guidelines outlined in this manual may void the warranty. MUST READ!!!**

## **WARNINGS**

- Do not heat pan on any other stove.
- Keep children and animals away from unit.
- Do not replace pan with any other container.
- Do not immerse cooker, cord or plug in liquid at any time
- Unplug cord from outlet when not in use and before cleaning
- Plug only into a 3-hole grounded electrical outlet
- Do not operate unattended
- Do not use this unit for anything other than intended use
- Do not use outdoors
- Always cook on a firm, dry and level surface at least 12" from walls or any other obstruction
- Do not use unit with a damaged cord or plug, in the event the appliance malfunctions, or has been damaged in any manner
- Any incorrect installation, alterations, adjustments and/or improper maintenance can lead to property loss and injury. All repairs should be done by authorized professionals only
- Do not incline or tilt the pan. Pan must be flat against and in full contact with heating element.

## **TO USE**

1. First clean and strain rice then place in rice cooker pot.
2. Add water to pot containing rice referencing a ratio of 1-1/2 cups of water to 1 cup of rice. The marks on the left of the pan indicate liters. The marks on the right of the pan indicate cups. Please note rice absorbs water differently, depending on the type of rice used.
3. Place rice in the pan evenly.
4. Place the pan inside the cooker and move it around lightly until it rests evenly on the heating plate.
5. Insert the plug into the socket of the cooker then plug in the other end to a power socket and switch on. The warm light will illuminate yellow indicating the Heat Preservation Unit is working; however the rice will not start cooking yet. Press the white switch button down to set the cooker in operation. Once the rice is thoroughly boiled, the switch button will automatically release and the red cook lamp will turn off and the yellow warm lamp light will turn on again. This indicates the rice has been cooked. Keep the lid on for 10 more minutes and the rice will cook to completion.
6. The temperature of the rice in the cooker will automatically be kept within the range of 60° - 80°C (140°F- 176°F). If heat preservation is not necessary, turn unit off and unplug. Preheating is not necessary.

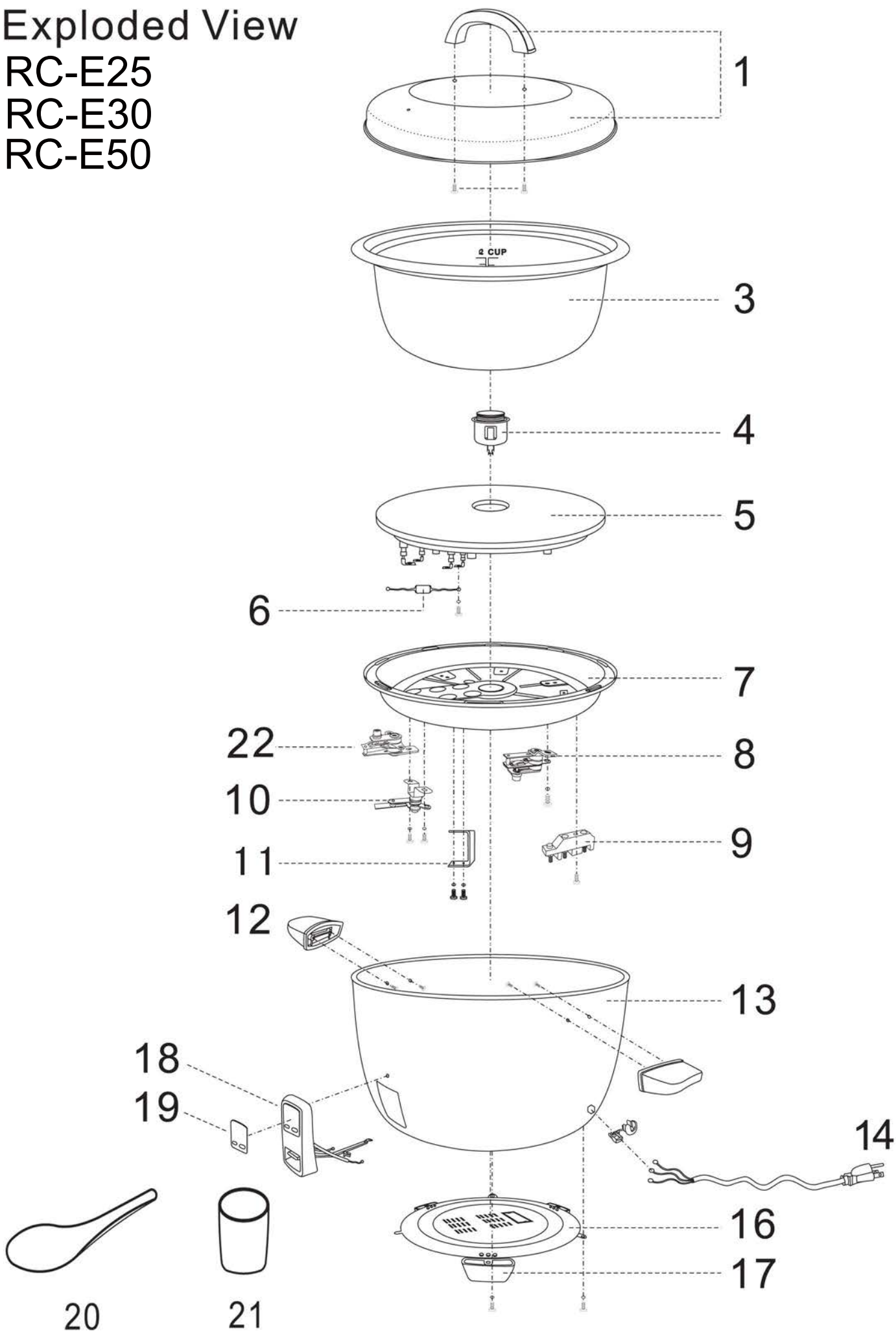
**CLEANING – NOTE:** To maintain cleanliness and increase service life, keep pan and heating plate clean. Avoid buildup of rice grains or debris from collecting between the bottom of the pan and the surface of the heating plate.

- Clean cooker with a damp cloth.
- Clean pan with water carefully, to avoid denting.

## TROUBLESHOOTING

No.	TROUBLES		CAUSES	REMEDY
1	The light is off.	The Heating plate is not hot.	The cooker is not connected to power supply.	Check the switch, outlet fuse, cord and connect it correctly.
		The Heating Plate is hot.	1. The lights or resistance are loose. 2. The lights or resistance is damaged.	1. Connect it. 2. Replace it.
2	The rice is half-cooked or cooking time is too long.		The Pan isn't contacting with the Heating Plate properly. 1. The Pan is warped. 2. The Heating Plate is deformed. 3. The Pan is slanting to one side. 4. Foreign matter left between the Pan and the Heating Plate is affecting performance.	1. Repair the Pan until there is contact with the Heating Plate. 2. When it is a little deformed, polish the Heating Plate with fine sand paper. 3. Turn the Pan around slightly until it fits the Heating Plate properly. 4. Remove foreign matter.
3	Does not warm automatically.		The warm thermostat is malfunctioning.	Replace it.

Exploded View  
RC-E25  
RC-E30  
RC-E50



## Rice Cooker - RC-E25, RC-E30, RC-E50

Reference Number	RC-E25 Part Number	RC-E30 Part Number	RC-E50 Part Number	Description
1	RC-E25/1	RC-E30/1	RC-E50/1	Cover w/Handle
3	RC-E25/3	RC-E30/3	RC-E50/3	Inner Aluminum Pot
4	RC-E/4	RC-E/4	RC-E50/4	Heat Sensor
5	RC-E25/5	RC-E30/5	RC-E50/5	Heating Element
6	RC-E/6	RC-E/6	RC-E/6	Fuse
7				Grate
8	RC-E/8	RC-E/8	RC-E/8	Thermostat IT-128D
9				Wiring with Porcelain
10	RC-E/10	RC-E/10	RC-E/10	Switch
11				Retort Stand
12	RC-E/12	RC-E/12	RC-E/12	Body Handle
13				Iron Shell
14	RC-E/14	RC-E/14	RC-E50/14	Power Cord and Line Clamp
16				Bottom Cover
17	RC-E25/17	RC-E30/17	RC-E50/17	Plastic Legs
18	RC-E/18	RC-E/18	RC-E/18	Switch Set
19				Brand Sticker
20	RC-E/20	RC-E/20	RC-E/20	Spoon
21	RC-E/21	RC-E/21	RC-E/21	Measuring Cup
22	RC-E/22	RC-E/22	RC-E/22	Thermostat IT-138D



## 1-YEAR LIMITED WARRANTY

Admiral Craft Equipment Corp. (the "Company") warrants this product (the "Product") will be free from failures in material and workmanship for one (1) year from the date of original purchase with proof of purchase, provided that the Product is operated and maintained in conformity with the Owner's Manual. This Limited Warranty is non-transferable. During this period, your exclusive remedy is repair or replacement without charge of the Product or any component found to be defective at the Company's discretion. If the Product or any component is no longer available, the Company will replace it with a similar one of equal or greater value. This Limited Warranty is void if the Product is used with voltage other than 120 Volts. **THIS WARRANTY IS IN LIEU OF ALL IMPLIED WARRANTIES, INCLUDING WARRANTIES OF MERCHANTABILITY, FITNESS FOR A PARTICULAR PURPOSE, PERFORMANCE, OR OTHERWISE, WHICH ARE HEREBY EXCLUDED. IN NO EVENT SHALL THE COMPANY BE LIABLE FOR ANY DAMAGES, WHETHER DIRECT, INDIRECT, INCIDENTAL, FORSEEABLE, CONSEQUENTIAL, OR SPECIAL ARISING OUT OF OR IN CONNECTION WITH THIS PRODUCT INCLUDING DAMAGES ARISING FOR FOOD OR BEVERAGE SPOILAGE CLAIMS.**

You may have other legal rights depending upon where you live. Some States or Provinces do not allow limitations on warranties so the foregoing may not apply to you.

## WARRANTY EXCLUSIONS

---

### IMPROPER ELECTRICAL CONNECTIONS:

The Company is not responsible for the repair or replacement of failed or damaged components resulting from electrical power failure, the use of extension cords, low voltage, or voltage spikes to the Product.

### IMPROPER USAGE:

This Limited Warranty does not cover failure or other damages to the Product resulting from (i) improper usage or installation or failure to clean and/or maintain the Product as set forth in the Owner's Manual; or (ii) accident, misuse, abuse, negligence, or modification or alteration of the Product.

### CONSUMABLES:

This Limited Warranty does not include consumables or wear-and-tear items such as legs, feet, plastic component parts, splash shields, filters, gaskets, and non-stick cooking surfaces.

### ADJUSTMENTS & CALIBRATIONS:

Leveling, tightening of fasteners, or utility connections normally associated with the original installation are the responsibility of the dealer, installer, or the end user and not the responsibility of the Company and will not be considered warranty issues.

If you think the Product has failed, or requires service, within its warranty period, please contact the Company's Customer Care Department through our website at: [www.admiralcraft.com](http://www.admiralcraft.com) "Service" --> "Technical Support Request". A receipt proving the original purchase date will be required for all warranty claims, handwritten receipts are not accepted. You may also be required to return the Product for inspection and evaluation. Return shipping costs are not refundable. The Company is not responsible for returns lost in transit.

This Limited Warranty is Valid only in the USA and Canada.