

AQUASPEC FAUCETS

MODEL - Z82600 SERIES
SINGLE HOLE, DOUBLE LABORATORY FAUCET



TECHNICAL INFORMATION

FLOW: 2.2 GPM [8.3L] PRESSURE COMPENSATING AERATOR *

MAXIMUM PRESSURE: 125 PSI

MAXIMUM TEMPERATURE: 180°F

HANDLE NUT TORQUE: 15-20 FT - LBS.

CARTRIDGE STYLE: QUARTER TURN CERAMIC DISK

* OTHER AERATORS AVAILABLE BY REQUEST

INSTALLATION INSTRUCTIONS

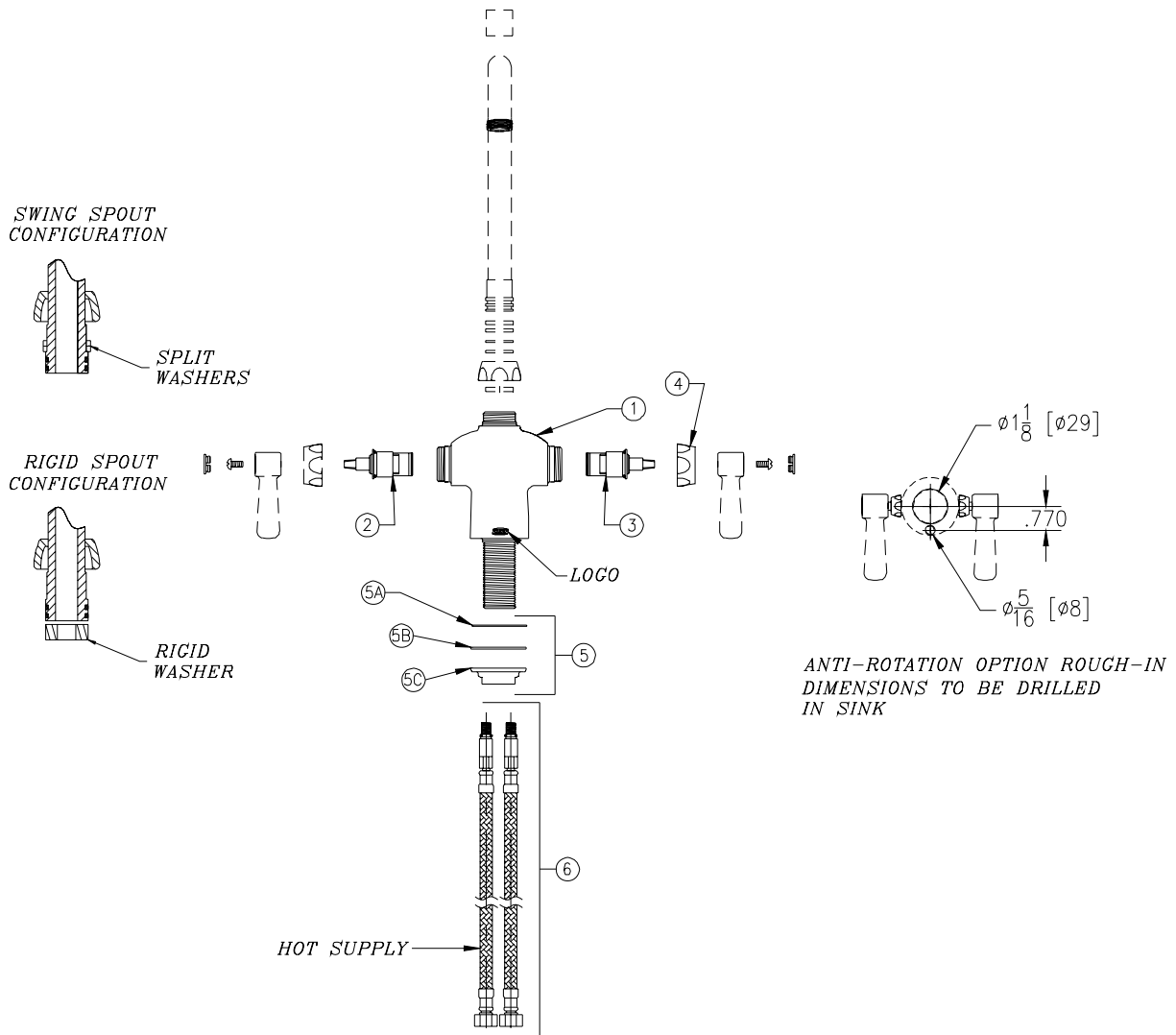
1. REMOVE FAUCET BODY FROM CARTON AND INSTALL FRICTION GASKET (ITEM #5A) ON SHANK.
2. OPTIONAL ANTI-ROTATION PIN (-AR), THREAD ANTI-ROTATION PIN INTO THE THREADED HOLE ON THE UNDER SIDE OF THE DOUBLE LAB BODY. SEE PAGE 2 FOR ROUGH-IN DIMENSIONS TO ACCOMMODATE THE (-AR) OPTION.
3. PLACE FAUCET ON SINK AND SECURE WITH WASHER (ITEM #5B) AND MOUNTING NUT (ITEM #5C).
4. TIGHTEN MOUNTING NUT FROM UNDER SINK. MAKE SURE FAUCET IS CENTERED PROPERLY. **DO NOT OVER TIGHTEN.**
5. INSTALL SPOUT INTO BASE AND TIGHTEN NUT (SEE VIEWS FOR SWING/RIGID CONNECTION).
6. ATTACH FLEX HOSE LAVATORY SUPPLIES (ITEM #6) TO SUPPLY STOPS. HOT SUPPLY IS TO THE LEFT WHEN FACING THE ZURN LOGO.
7. OPTIONAL GRID STRAINER (-G) / HANDICAP OFFSET GRID DRAIN (-GH). INSTALL GRID STRAINER IN SINK OUTLET AND PLUMB WASTE CONNECTION.
8. TURN WATER SUPPLY ON AND OPERATE FAUCET CHECKING FOR LEAKS.
9. IT MAY BE NECESSARY TO SHUT WATER OFF AND REMOVE CARTRIDGES TO CLEAN SUPPLY LINES. CARTRIDGES CAN BE REMOVED BY FIRST REMOVING THE HANDLES. COLOR INDEXES CAN BE REMOVED BY INSERTING A PIN INTO THE HOLE ON THE UNDERSIDE OF THE HANDLE. AFTER THE HANDLES HAVE BEEN REMOVED UNSCREW THE HANDLE NUTS AND PULL OUT ON THE CARTRIDGE. ZURN WILL SUPPLY HANDLE PORT PLUGS (ZURN PART #61094001) AT YOUR REQUEST.
10. REPLACE CARTRIDGES IN BODY AND HAND TIGHTEN HANDLE NUTS. PLACE HANDLES ON THE CARTRIDGE STEM AND LOCATE THEM AS DESIRED. TIGHTEN HANDLE NUT.
11. REPLACE HANDLE SCREWS AND COLOR INDEX BUTTONS.
12. INSTALL AERATOR INTO FAUCET AND HAND TIGHTEN. IT MAY BE NECESSARY TO UNSCREW AND CLEAN AERATOR AT START-UP.

MAINTENANCE

1. YOUR ZURN AQUASPEC FAUCET HAS A HIGHLY POLISHED NICKEL CHROME PLATED FINISH. CLEAN WITH SOAP AND WATER OR A MILD CLEANER WHICH IS SAFE FOR CHROME PLATING. DO NOT USE ACIDS OR TOILET BOWL CLEANER AS THEY WILL DAMAGE THE FINISH.
2. AQUASPEC FAUCETS CONTAIN CERAMIC DISK CARTRIDGES WHICH REQUIRE NO MAINTENANCE. TO REMOVE THE CARTRIDGE SHUT THE WATER OFF, LOOSEN THE HANDLE NUTS AND PULL OUT ON THE CARTRIDGE.

ZURN INDUSTRIES, LLC. ♦ COMMERCIAL BRASS OPERATION ♦ 5900 ELWIN BUCHANAN DRIVE ♦ SANFORD NC 27330
Phone: 1-800-997-3876 ♦ Fax: 919-775-3541 ♦ World Wide Web: www.zurn.com
In Canada: ZURN INDUSTRIES LIMITED ♦ 3544 Nashua Drive ♦ Mississauga, Ontario L4V1L2 ♦ Phone: 905-405-8272 Fax: 905-405-1292

Z826A1 PICTURED



Z82600 PARTS LIST

ITEM	QTY	ITEM	QTY
1	60822002	DOUBLE LAB BODY	1
2	59517001	SHORT COLD CARTRIDGE	1
3	59517002	SHORT HOT CARTRIDGE	1
4	59523001	HANDLE NUT	2
5	G61073	MOUNTING HARDWARE	1
5A	60549002	FRICTION GASKET	1
5B	60444002	WASHER	1
5C	60445002	MOUNTING NUT	1
6	G66621	S.S. BRAIDED FLEX HOSES	1

REPLACEMENT PARTS

COLD WATER CARTRIDGE 59517001
 HOT WATER CARTRIDGE 59517002
 INDEX BUTTONS G60500