

**AXOR Starck**  
**Baton Handshower 2-Jet, 2.0 GPM**  
Finishes : **brushed nickel** Part no. : **04304820**



## Description

### Features

- 134 no-clog spray channels
- Spray modes: Full, IntenseRain
- Flow: 2.0 GPM (7.6 L/Min)

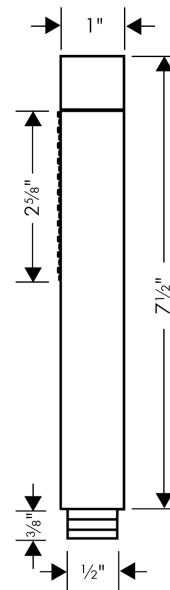
## Technology



## Product image



## Scale drawing

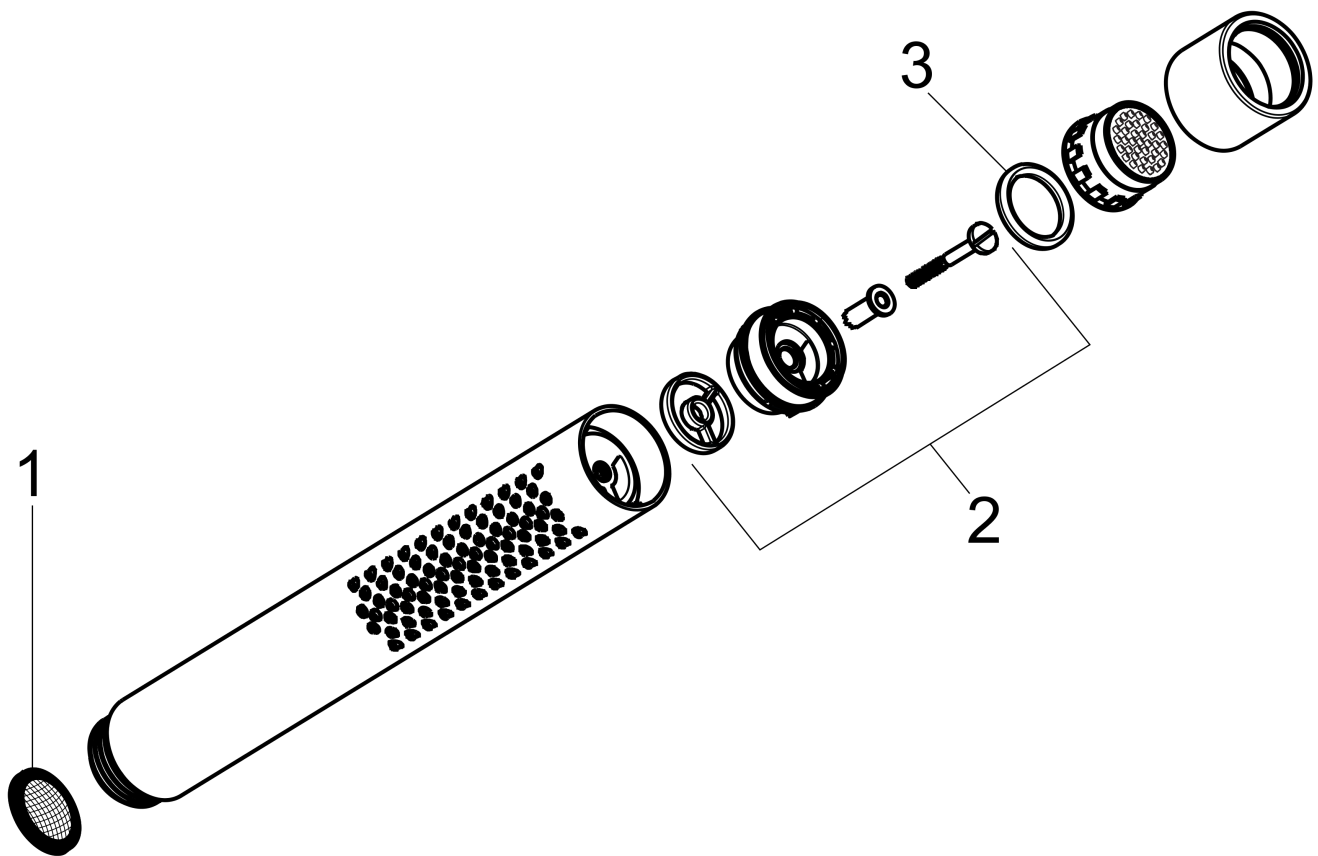


**AXOR Starck**  
**Baton Handshower 2-Jet, 2.0 GPM**  
Finishes : **brushed nickel**    Part no. : **04304820**



## Exploded drawing

Year of production: >01/17



**AXOR Starck**  
**Baton Handshower 2-Jet, 2.0 GPM**  
 Finishes : **brushed nickel**    Part no. : **04304820**



## Spare parts list

Year of production: >01/17

Pos.	Description	Part no.	PC	PU
1	filter packing	94246000	0	1
2	selector assy	95511000	0	1
3	O-Ring 14x2,5	98189000	0	1