

EVERYTHING YOU NEED TO KNOW ABOUT ASSEMBLING YOUR CART



CART ASSEMBLY INSTRUCTIONS

RESIDENTIAL USE ONLY

Let's get this cart
together.



XO CART INSTRUCTIONS

Model Numbers: XOG30CART, XOG36CART, XOG42CART

BEFORE GETTING STARTED

Unpack and lay out all of the included parts. Most of the stainless-steel pieces come with a protective film. Remove all of the film and take care with stainless steel components as to not scratch them during the assembly process.



WARNING



Parts may have sharp edges. Wear leather work gloves and handle parts carefully during unpacking, assembly, and installation.

OVERVIEW - ASSEMBLE ON LEVEL SURFACE

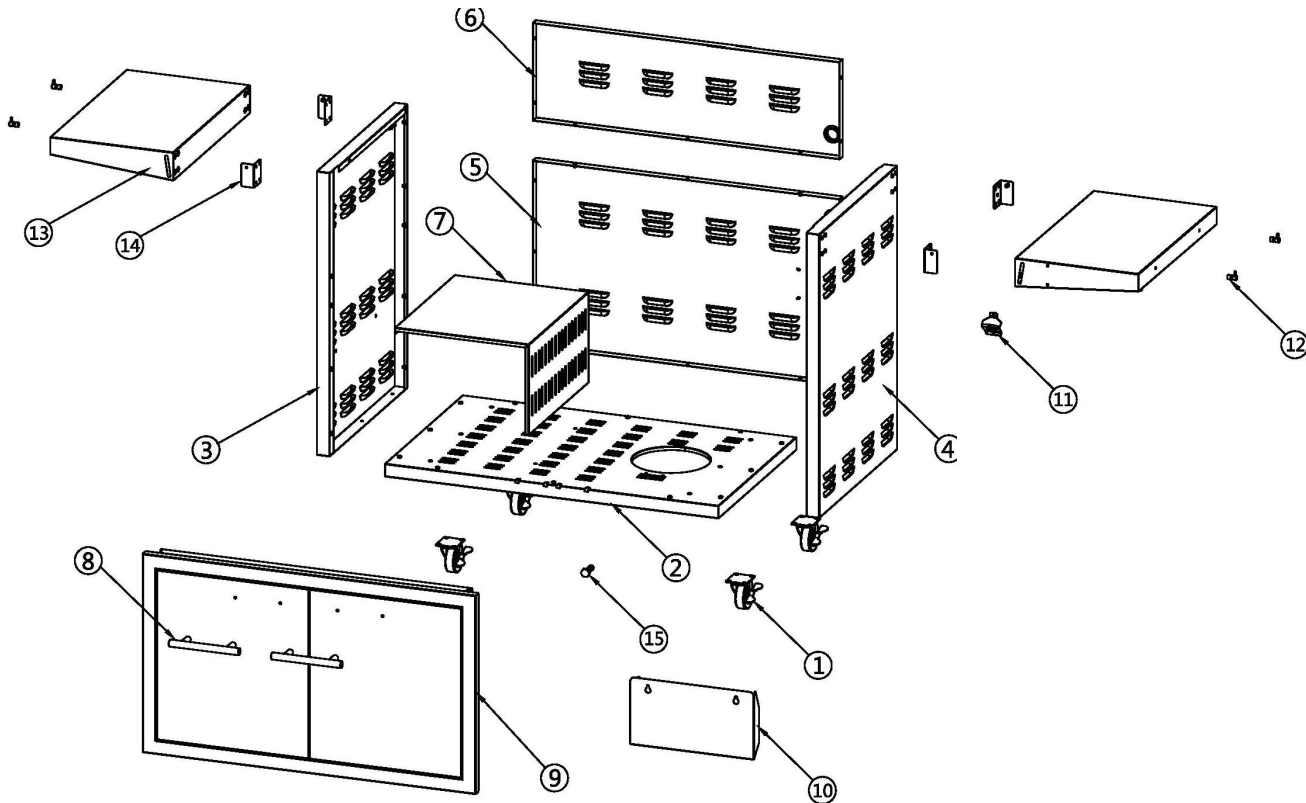


CART PARTS

30" | 36" | 42" GRILL CART ASSEMBLY

HARDWARE:	
1. M5*12 SCREWS/WASHER COMBINATION	57 sets
2. M5*12 COUNTERSUNK HEAD SCREW	17 pcs
3. M4*10 SCREWS/WASHER COMBINATION (FOR TRANSFORMER)	5 pcs
4. M4 HEX NUT(FOR TRANSFORMER)	5 pcs
5. M5*10 FLAT HEAD SCREW(ASSEMBLED WITH DOOR HANDLE)	4 pcs
6. M5*10 COUNTERSUNK HEAD SCREW(FOR BEER OPENER)	2 pcs
7. M5 HEX NUT(FOR BEER OPENER)	2 pcs
8. M6*10 FLAT HEAD SCREW(ASSEMBLE WITH HOOKS)	4 pcs
9. M14*40 HEX BRACKET SCREW	1 pcs
10.M5*16 FLAT HEAD SCREW	4 pcs
11. HOOKS	4 pcs
12. BEER OPENER	1 pcs
13. SCREW DRIVER	1 pcs
14. WRENCH	1 pcs

GRILL CART ASSEMBLY				
ITEM NO.	DESCRIPTION	PART NO.		
		XOG30CART	XOG36CART	XOG42CART
1	LOCKING CASTER	XOGP 137	XOGP 152	XOGP 167
2	BOTTOM PANEL	XOGP 138	XOGP 153	XOGP 168
3	SIDE PANEL ,LEFT	XOGP 139	XOGP 154	XOGP 169
4	SIDE PANEL ,RIGHT	XOGP 140	XOGP 155	XOGP 170
5	LOWER BACK PANEL	XOGP 141	XOGP 156	XOGP 171
6	UPPER BACK PANEL	XOGP142	XOGP 157	XOGP 172
7	STEP PANEL	XOGP 143	XOGP 158	XOGP 173
8	HANDLE	XOGP 144	XOGP 159	XOGP 174
9	DOOR AND FRAME ASSY	XOGP 145	XOGP 160	XOGP 175
10	SEASONING BOX	XOGP 146	XOGP 161	XOGP 176
11	BEER OPENER	XOGP 147	XOGP 162	XOGP 177
12	HOOK	XOGP 148	XOGP 163	XOGP 178
13	SIDE SHELF	XOGP 149	XOGP 164	XOGP 179
14	SIDE SHELF BRACKET PAIR	XOGP 150	XOGP 165	XOGP 180
15	M14*40 HEX BRACKET SCREW	XOGP 151	XOGP 166	XOGP 181



Follow Steps 1 Through 5.

STEP-1: Remove all parts from the carton and please use an assistant to help in this cart assembly.

STEP-2: With the Bottom Panel (#2) positioned upside down on a protective surface, attach all of the Locking Casters (#1) using 4 sets M5x12 screw with captive washer on each castor.



STEP-3 : Attach the Right & Left Side Panel (#3 & 4) to the Bottom Panel (#2) by using 6 sets M5x12 screw with captive washer (The tank hole of Bottom Panel#2 is on the right side.)



STEP-4: Attach Bottom Back Panel (#5) to the Side Panels (#3 & 4) by using 6 sets M5x12 screw with captive washer and then to the Bottom Panel (#2) by using 3 sets M5x12 screw with captive washer.

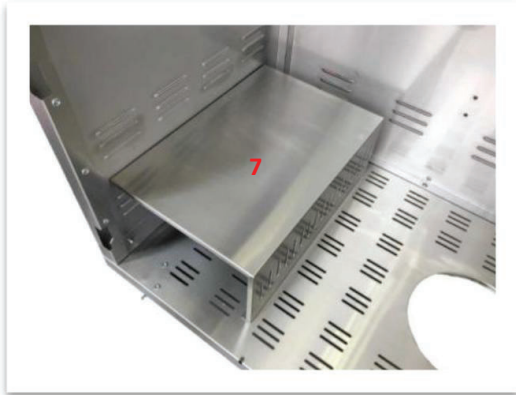


STEP-5: Attach Upper Back Panel (#6) to the Side Panels (#3 & 4) by using 4 sets M5x12 screw with captive washer, and then to use 3 sets M5x12 screw with captive washer to attach with the Bottom Back Panel (#5) .



Follow Steps 6 Through 8.

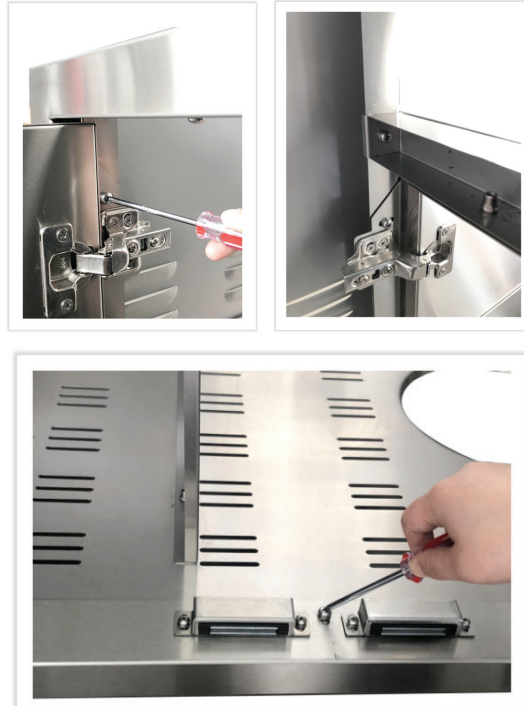
STEP-6: Attach Tank Interference Step (#7) to the Bottom Panel (#2) by using 2 sets M5x12 screw with captive washer, and then to use 2 sets M5x16 screw with captive washer to be attached with Left Side Panel (#3) .



STEP-8: Attach two Door Handles (#8) to the Assembled Door Unit (#9) by using 4 pcs M5x10 Flat Head Screw .



STEP-7: Attach the Assembled Door Unit (#8) to the Right & Left Side Panel (#3 & 4) by using 8 sets M5x12 screw with captive washer, and then use another 3 sets M5x12 screw with captive washer to attach it to Bottom Panel (#2) .

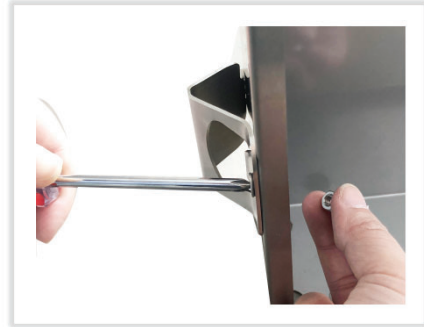


Follow Steps 9 Through 11.

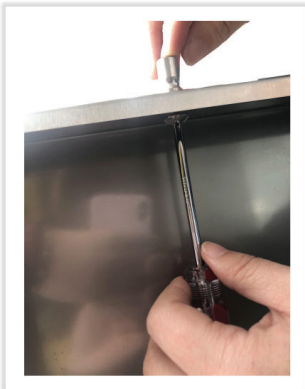
STEP-9: Attach the Seasoning Box (#10) to the Right access door (#9) by using 2 sets M5x12 screw with captive washer.



STEP-10: Attach the Beer Opener (#11) to the Right side shelf (#13) by using 2 pcs M5x10 Countersunk Head Screw and 2 pcs M5 Hex Nut.

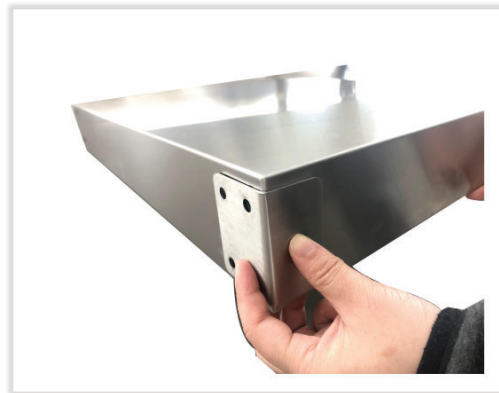


STEP-11: Attach 4 pcs Hook (#12) to the side shelves (#13) by using 4 pcs M6x10 Flat Head Screw.



Follow Steps 12

STEP-12: Assemble 1 set Left & Right Side Shelf Brackets (#14) to the Left & Right Side Shelves' slots, then attach a Side Shelf (#13) to each Side Panel by using 16pcs M5x12 Countersunk Head Screw.



Follow Steps 13.

STEP-13: Finally, the barbecue is ready to be installed into the cart. Once installed, secure the barbecue head with 2pcs M5x16 screw through the holes that are on each side, towards the front, on the inside of the grill.



Follow Steps 14

STEP-14: The Propane tank is held in position by the Tank Bracket screw M14 x40 (#15) that clamps the tank in place.

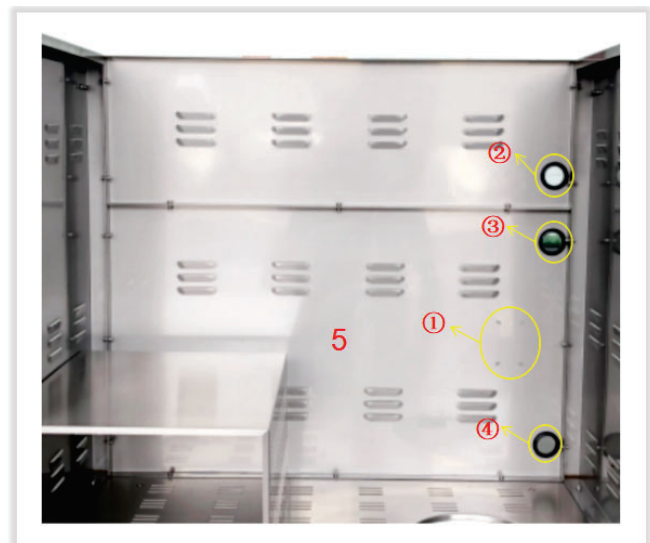


DRAW YOUR ATTENTION:

Note1: Mounting holes in the Bottom Back Panel#5: ① There are four holes that are for mounting the transformer (These holes are only for BBQ HEAD WITH LIGHTS) .

Note2: Large Round holes in the Upper and Bottom Back Panel (#5 & #6) : ③ is for LP Hose; ④ is for NG hose; ②&③ are for transformer wire.

Note3: Some adjustments may be needed to obtain proper placement or level positioning with the cart . Make sure to tighten all screws with screwdriver.



INSTALLATION IS COMPLETE.



TIME TO GET GRILLING

1-800-966-8300

Visit our web site at www.xoappliance.com

