

ASSEMBLY INSTRUCTION

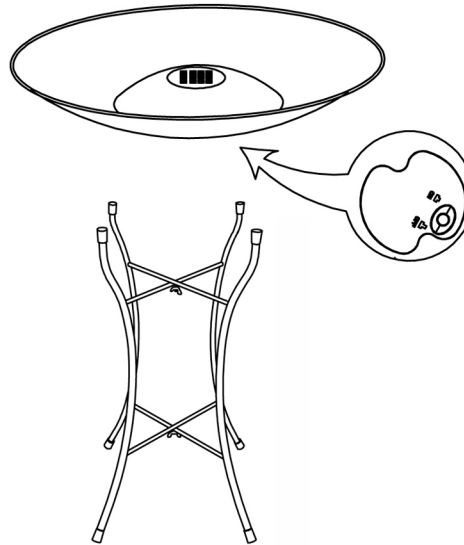
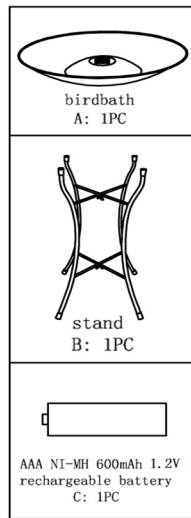
Unpack all parts from the packaging and ensure there are no missing or damaged parts. If any parts are missing or damaged, do not attempt to assemble or use the product.

Teamson Design Co. 668 Pine Aire Dr., Bay Shore, NY 11706
Toll Free: 1-800-935-3959 (Mon.-Fri. 9:00AM to 4:30 PM EST)
E:support@teamson.com Fax:1-631-274-3353

Teamson UK Ltd, 35b-35c The High Street, Newport, TF10 7AT
Tel: +44 (0) 1952 916050 E:sales@teamson.co.uk

• No tools required

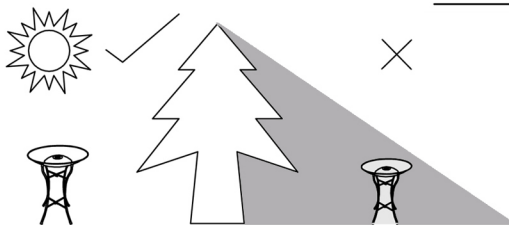
PARTS:



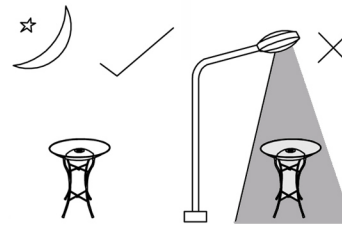
INTRODUCTION FOR SOLAR LIGHT

Solar lights work by using electricity generated by the solar panel to charge internal batteries. These batteries are then used to power the light. When switched on the lights automatically illuminate at night by using a light sensor. The duration of illumination will depend on the amount of sunlight and therefore change received by the batteries.

POSITION

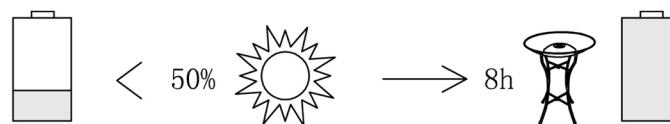


Position the Solar panel to receive the maximum amount of sunlight.



Do not position under bright light as this will prevent the light switching on at night

FIRST USE



Whilst there may be some initial charge in the battery, we recommend fully charging it before first use. Leave the switch in the "OFF" position for 2 sunny days to ensure the battery is fully charged. Once fully charged switch to "ON" and your light will come on automatically at night.

NOTE: The diagrams shown are for illustrative purposes only and are not to scale

INSTRUCTIONS: Turn solar unit on by pressing the power button located on the switch panel. Place the product in direct sunlight. For better performance, make sure solar panel have been fully charged in direct sunlight for approximately 8-10 hours.

WARNING: AAA NI-MH 600MAH, 1.2V rechargeable battery. Battery must be recycled or disposed of properly. Do not dispose of batteries in fire. They may explode or leak, LED light: 3.0V

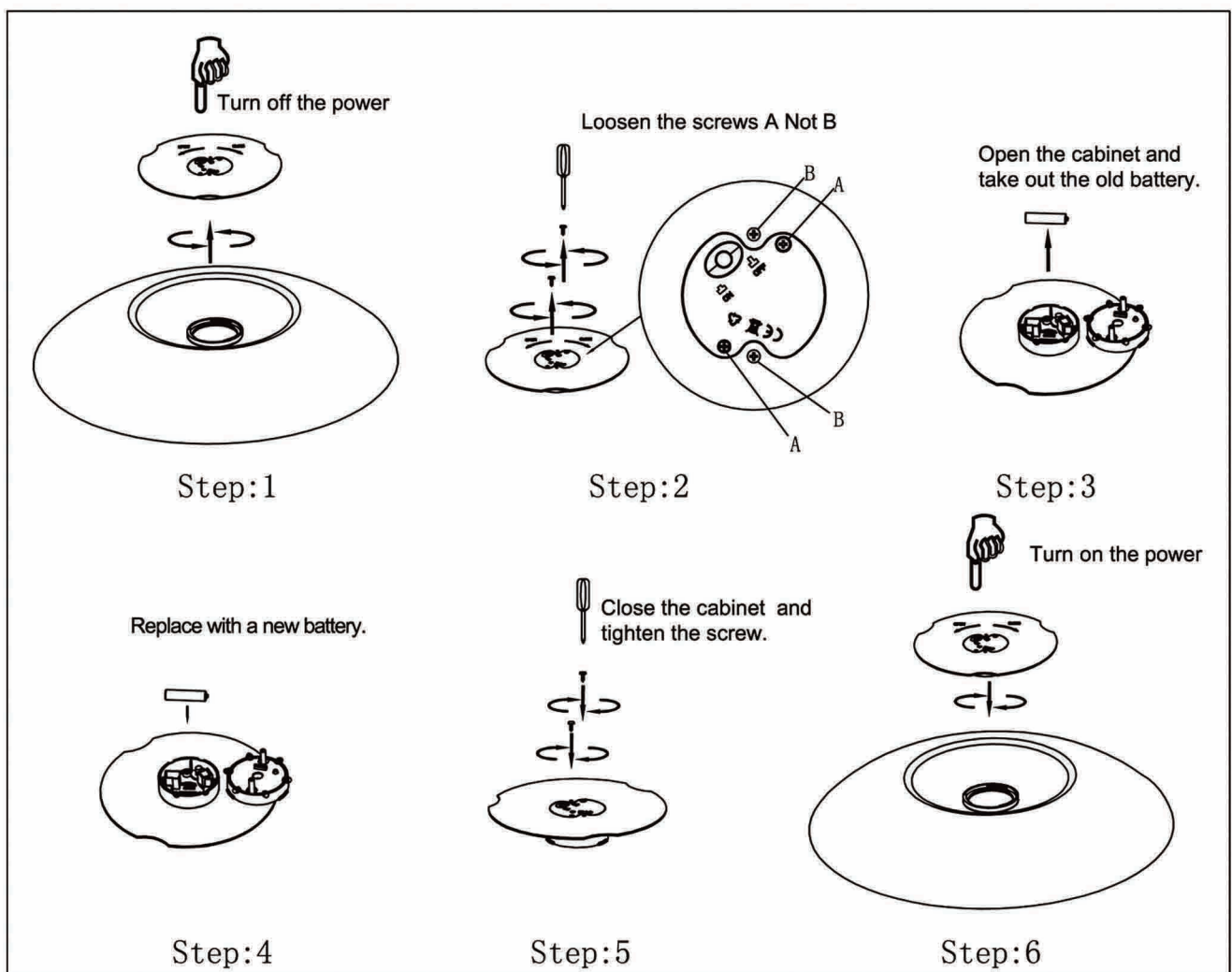
THANK YOU

We appreciate the trust and confidence you have placed in PEAKTOP through the purchase of this birdbath. We strive to continually create quality products designed to enhance your home. Visit us online to see our full line of products available for your home improvement needs. Thank you for choosing PEAKTOP

BATTERY

Rechargeable batteries allow multiple usage and can be charged repeatedly. Although they lose capacity as the number of charge cycles increases even without mistreatment. It is recommended to switch the battery off for 3-5 days exposed to direct sunlight until it's fully charged. If the battery still does not charge, it may be replaced within 90 days of the purchase date.

CHANGE BATTERY



- Warning:**
1. Battery must be recycled properly.
 2. Do not dispose of old batteries in household waste.
 3. Do not dispose of batteries in fire or expose to excessive heat.
 4. Do not mix old and new batteries.
 5. Do not mix alkaline, standard(carbon-zinc), or rechargeable batteries.