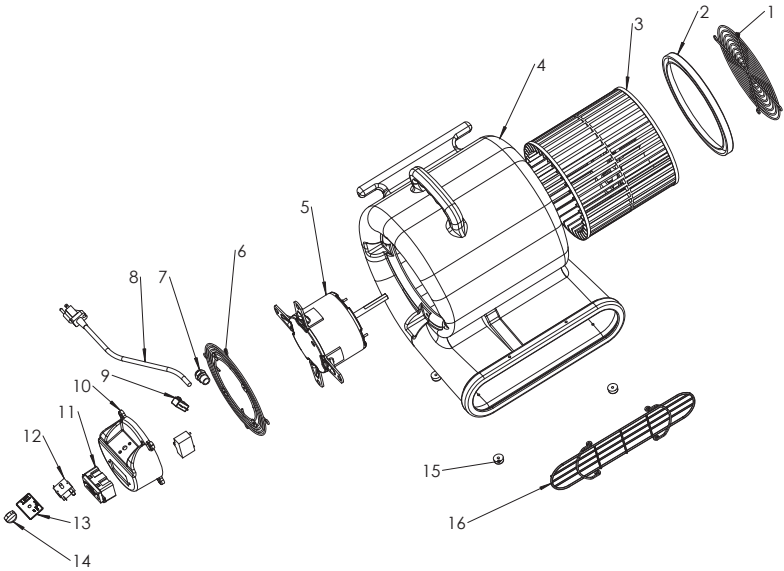


Unit Assembly



Item	Desciption	QTY
1	Inlet Grill	1
2	Plastic Cover	1
3	Fan wheel	1
4	Fan Housing	1
5	Motor	1
6	Inlet Grill	1
7	Connector	1
8	Power Cord	1
9	Circuit Breaker	1
10	Switch Box	1
11	GFCI	1
12	Switch	1
13	Switch Label	1
14	Switch Knob	1

Wear items exempt from warranty consideration include but may not be limited to: power cords, transport wheels, castors, handle grips, filters, screens, brushes and carbon brushes. Subject to the conditions and exceptions stated in this warranty, BlueDri warrants the BlueDri products to be free from defects in material and workmanship, under normal use and service, for the periods listed under the warranty policy to the original purchaser. At any time during the warranty period, BlueDri will furnish replacement parts for the BlueDri products to the original purchaser. Such parts will be furnished and charged including transportation costs, original owner. If the original part is returned within the warranty policy period from date of delivery for inspection by BlueDri and is found to be defective, the owner will be credited for the cost of replacement parts plus shipping and handling. Replacement parts that have become defective through wear or abuse are not included in this warranty .This warranty does not apply to damage or defect caused by accident, misuse, negligence, fire or to any BlueDri product which has been serviced or repaired by other than an authorized BlueDri Service Distributor or BlueDri factory personnel. This warranty is void if products are used for any purpose other than that which was intended. There are no other warranties expressed or implied. In no event shall BlueDri be liable for incidental or consequential damages or any damage to person or property. (Please note some states do not allow the exclusion or limitations for incidental and consequential damages.)

Unit Specifications

Certifications	C-ETL-US
Motor Rating	0.33 HP
Power	115 V, 60 Hz
Current	2.0/2.5/3.3 amps
Weight	28 Lbs
Dimensions	17.3”W x 16”L x 18”H
Power Cord Length	25’
Speeds	3

Specifications are subject to change without notice.

Limied Warranty

1-Year Coverage
Subject to the conditions stated below, BlueDri offers a limited warranty on parts and labor on the following equipment, parts and accessories to be free from defects in material and workmanship for a period of one year to the original purchaser.

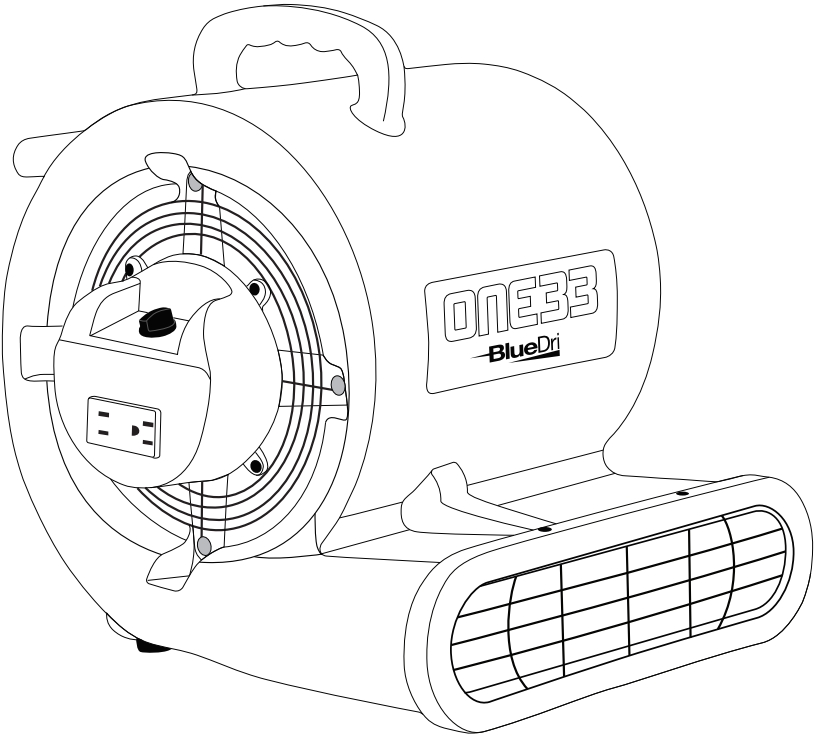
5-Year Coverage
Subject to the conditions stated below, BlueDri warrants parts and labor on rotationally molded polyethylene tanks/housings and injection molded vacuum head assemblies to be free from defects in materials and workmanship for a period of ten years to the original purchaser.



bluedri.com

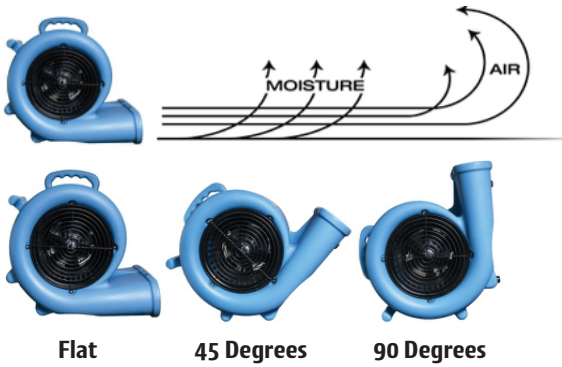
Owner’s Manual

ONE33 3-SPEED CENTRIFUGAL AIR MOVER



Operation

Plug your air mover into a standard grounded outlet with the correct voltage and amperage. If you are unsure about the outlet, contact your supervisor. Turn on the switch and check that the unit operates properly before letting it run



A 45 degree angle is good for drying furniture after a cleaning.
A 90 degree angle is ideal for walls and ceilings.



Read and save these instructions.





WARNING



IMPORTANT SAFETY INSTRUCTIONS

When using electrical appliances, these instructions and warnings should always be followed to reduce the risk of fire, electrical shock and injury to persons:



Read all instructions before using this Fan.



WARNING

TO REDUCE THE RISK OF FIRE, ELECTRICAL SHOCK OR PERSONAL INJURY, ALWAYS FOLLOW THESE IMPORTANT SAFETY INSTRUCTIONS AND WARNINGS:



DO NOT use this Fan to ventilate areas where flammable liquids or vapors are used, stored or are present, including paints, gasoline, varnishes, floor refinishing products or solvents. ALWAYS read and follow all warnings and instructions on the containers for these products!



ALWAYS be sure the plug fits tightly into the outlet. When plugs fit loosely into outlets, they may slip partially out of the outlet and create a poor connection. This may cause outlets to overheat and create a potential fire hazard. Outlets in this condition should be replaced by a qualified electrician.



ALWAYS unplug the power cord when servicing, cleaning or moving the Fan. DO NOT use the ON/OFF switch as the sole means of disconnecting power. NEVER leave children unattended when the Fan is on or plugged in. ALWAYS turn off and unplug the Fan when not in use.



Use **ONLY** GFCI protected receptacles if utilizing as an installation type Fan.



BE CERTAIN that the power source for the Fan is 120V AC. DO NOT plug the Fan into 240V or other power source.

The power cord is equipped with a three-prong grounded plug that must be inserted into a matching receptacle. Under no circumstances should the grounding prong be cut off the plug. Where a two-prong wall receptacle is encountered, it must be replaced with a properly grounded three-prong receptacle installed in accordance with the National Electrical Code (NEC) and all applicable local codes and ordinances. This work must be done only by a qualified electrician, using copper wire only.



DO NOT USE A THREE-PRONG TO TWO-PRONG ADAPTER. IMPROPER CONNECTION MAY CREATE THE RISK OF ELECTRICAL SHOCK. USE OF SUCH ADAPTERS IS NOT PERMITTED IN CANADA.

WARNING: TO REDUCE THE RISK OF FIRE OR ELECTRIC SHOCK, DO NOT USE THIS FAN WITH ANY SOLID STATE SPEED CONTROL DEVICES.



CAUTION

- **DO NOT** operate any fan with a damaged cord or plug. Discard fan or return to an authorized service facility for examination and/or repair.
- Unplug or disconnect the unit from the power supply before servicing.
- **DO NOT** use extension cords, power strips, power taps, outlet style air fresheners or other cord connected device, as these devices may overheat and cause a fire hazard.
- **DO NOT** route power cord under rugs, carpets, runners or furniture. This may damage the cord or cause it to overheat creating a fire hazard.
- **ALWAYS** place the Fan on a stable, flat, level surface while in operation to prevent the Fan from overturning.
- **NEVER** insert or allow fingers or objects to enter grill openings while Fan is in operation or injury and/or damage to the Fan may occur.
- **DO NOT** block, cover or obstruct air flow to or from the Fan while in operation.
- **DO NOT** use this Fan outdoors or near wet locations such as a bath tub, pool, hot tub or pooled water. Use of this Fan in a wet location may create a shock hazard.
- **DO NOT** run cord under carpeting. Do not cover cord with throw rugs, runners, or similar coverings. Do not route cord under furniture or appliances. Arrange cord away from traffic area and where it will not be tripped over.
- **DO NOT** use this Fan if it has been damaged or is not functioning properly.
- **DO NOT** operate unit in stacked position.
- **THIS FAN DOES NOT MEET THE REQUIREMENTS OF NEC ARTICLE 547-7 (2008).** This Fan is not suitable for use in agricultural facilities including areas where livestock, poultry or other animals are confined. Please refer to National Electric Code (NEC) Article 547-7 (2008), or applicable state or local codes or standards relating to electrical requirements for agricultural buildings.
- **THIS FAN DOES NOT MEET THE REQUIREMENTS OF NEC ARTICLE 500 (2008).** This Fan is not suitable for use in hazardous locations. Please refer to National Electric Code (NEC) Article 500 or applicable state or local codes or standards relating to electrical requirements for hazardous locations.

MAINTENANCE



WARNING

To reduce the risk of electrical shock and fire please observe the following instructions:



- Always unplug the cord before moving, servicing or cleaning.
- NEVER place the Fan in water.



- Clean the Fan only with a vacuum equipped with a brush attachment; the vacuum will remove the lint and dirt from inside the Fan.
- NEVER attempt to take apart the Fan.
- Clean the body of the Fan with a soft cloth only.
- NEVER use ALCOHOL or SOLVENTS such as gasoline, benzene, paint thinner, or other harsh cleaners.

TROUBLE SHOOTING TIPS

If your Fan fails to operate, see below for a probable cause and solution:

Be sure the power cord is plugged into a working electrical outlet.

Breaker Reset: A 12-amp breaker is provided as a safety feature of your Blower Fan. When you use an appliance that has more amperage than allowed, the breaker will trip. To reset, unplug the appliance causing the breaker to trip and push the Reset Button adjacent to the outlets on the Fan.

If you have a problem that can not be resolved by the steps listed above, contact Technical Assistance at (800) 233-0268, Monday through Friday, between the hours of 8:00 a.m. and 5:00 p.m. Eastern.

STORAGE: Store the Fan with these instructions, in the original carton in a cool, dry place.

LUBRICATION: Motor is permanently lubricated.

DISPOSITION: Corrugated packaging materials are recyclable. For environmentally responsible disposal of this product, contact your local waste service provider or visit www.1800recycling.com®.

GFCI Protection and the On-Board Duplex Outlet:

The standard AC voltage outlet GFCI (Ground Fault Circuit Interrupter) promotes operator safety in wet applications. GFCI devices trip when a fault to electrical ground is sensed. It is recommended to check the GFCI protection prior to operation. To check, push the "TEST" button located on the GFCI duplex outlet will pop out. If operating properly the "RESET" button on the GFCI outlet will pop out. Depending on your Centrifugal Air Movers specific equipment, a tripped GFCI may be indicated by a small LED. The device can only be "RESET" when the Centrifugal Air Mover is connected to a wall outlet providing standard voltage. This duplex AC outlet allows the inter-connection of other AC powered devices. The sum total amperage of all devices (excluding the first fan) plugged into the receptacle must not exceed 8.7 amps.

Troubleshooting

Problem	Possible Cause/Solution
Unit will not run	<ul style="list-style-type: none">• No power to unit-Plug it in. Check circuit breaker• Switch not on-Place in “ON” position.• Switch is faulty-Replace switch.• Faulty/broken cord or motor wire-Perform continuity check, using volt/amp meter. Repair/replace faulty broken wire.
Unit runs but air mover makes loud scraping noise	<ul style="list-style-type: none">• Unit has been severely jolted causing blower wheel to rub against housing-Remove motor and replace damaged motor mounts.• Unit has been severely jolted causing housing to deform-Replace blower wheel.
Unit runs but vibrates excessively	<ul style="list-style-type: none">• Severe jolt has bent motor shaft causing unit to be out of balance-Remove and replace motor.• Air mover blade damaged-Replace blade if necessary.• Dirt build up on one side of air mover blade-Clean air mover blade.
Unit runs but blower wheel does not turn	<ul style="list-style-type: none">• Motor bearings are falling or motor has developed an internal electrical fault-Replace motor.• Intake grill and/or exhaust grill is obstructed-Replace blade if necessary.• Excessive duct length-Reduce duct length to recommended maximum.