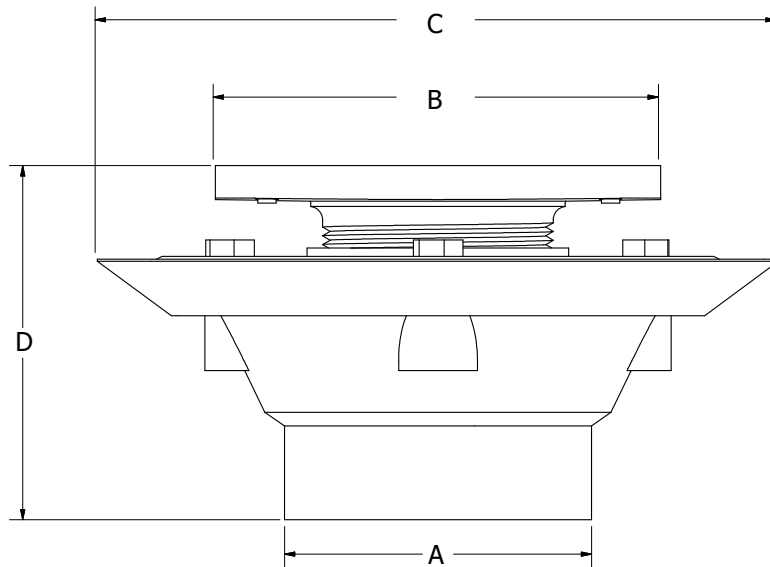




2" X 3" PVC SHOWER DRAIN WITH 2" BRASS SPUD AND 4.25" STRAINER WITH GROUT RING

- Fits over 2" or inside 3" Schedule 40 DWV pipe
- Comes with square screw-in strainer
- Low profile for first and second floor installations
- Beveled edge allows for recessed installation
- Reversible clamping ring for additional 1/2" height adjustment
- Brass inserts ensure secure clamping of membrane
- Grout ring provides finished appearance between tile floor and strainer
- Dual weep holes
- Recessed sump area for added drainage



| Part No. | | Strainer - Shape | Strainer - Finish | A - Pipe Size | B | C | D |
|------------|-------------------------|------------------|-------------------|--------------------|-------|-------|------------|
| PVC | PVC w/ Test Plug | | | | | | |
| D50942 | D50942TP | Square | Chrome Plated | 2.39" ID, 3.04" OD | 4.25" | 6.50" | 3" - 4.37" |
| D5094BN | D5094BNTP | Square | Brushed Nickel | 2.39" ID, 3.04" OD | 4.25" | 6.50" | 3" - 4.37" |
| D5094RB | D5094RBTP | Square | Oil Rubbed Bronze | 2.39" ID, 3.04" OD | 4.25" | 6.50" | 3" - 4.37" |
| D5094WB | D5094WBTP | Square | Old World Bronze | 2.39" ID, 3.04" OD | 4.25" | 6.50" | 3" - 4.37" |