



SECUREMAX™

SMART REAR-FACING
INFANT CAR SEAT

OWNER'S MANUAL
KEEP FOR FUTURE USE.

Rear-facing*

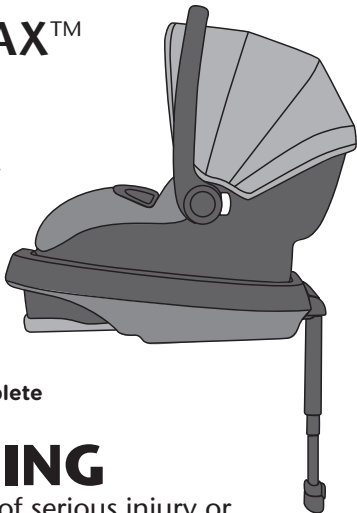
1.8 to 15.8 kg
(4 to 35 lbs)

43 to 81 cm
(17 to 32 in.)

***See page 6 for complete
requirements.**

WARNING

To reduce the risk of serious injury or death, read this owner's manual prior to installing and using this child restraint.



More children are killed every year as passengers in car crashes than by any other type of injury.

To reduce the risk of **SERIOUS INJURY** or **DEATH**, read this owner's manual and your vehicle owner's manual before installing and using this child restraint.

Using a child restraint makes a big difference. By properly using this child restraint and following these instructions (and the instructions that accompany your vehicle), you will greatly reduce the risk of serious injury or death to your child from a crash.

Do not be misled by the commonly used term "safety seat"; no restraint system can prevent all injuries in all crashes. Many properly restrained adults and children are injured in motor vehicle crashes, including relatively minor crashes.

A properly used child restraint is the best way to minimize injuries to your child and to increase the chances for your child's survival in most crashes.

U.S. Regulatory Notice

This child restraint meets all the requirements of Federal Motor Vehicle Safety Standard 213.

Symbol Legend



Airbag Symbol – Alerts you to important information about airbag safety.



LATCH Symbol – Alerts you to important information about LATCH safety.



Aircraft Symbol – Alerts you to important information about aircraft safety.

Table of Contents (TOC)

| | |
|--|----|
| Child Requirements | 6 |
| Premature Infant Use | 8 |
| Warnings | 10 |
| LATCH Warnings..... | 22 |
| Safe Practices | 28 |
| For Recall Information for U.S. Customers | 29 |
| Motor Vehicle/Aircraft Usage | 31 |
| Base Features | 32 |
| Child Seat Features | 34 |
| Using the Handle | 36 |
| Installing the Canopy..... | 37 |
| SafeZone™ Load Leg | 38 |
| Installation Checklist with Base | 44 |
| Installing the Base with the Lower Anchor Connector Assembly | 46 |
| Installing the Base with the Vehicle Seat Belt/Shoulder Belt | 54 |
| Installing the Base with the Vehicle Seat Belt | 58 |
| Installation Checklist without Base | 62 |
| Installing the Carrier with the Vehicle Seat Belt/Shoulder Belt | 66 |

| | |
|---|-----|
| Installing the Carrier with the Vehicle Seat Belt | 68 |
| Adjusting the Recline | 70 |
| Checking the Recline with Base | 71 |
| Placing Your Child in the Carrier | 73 |
| Changing the Crotch Strap Position..... | 76 |
| Changing the Waist Strap Position..... | 80 |
| Using the Infant Body Support..... | 86 |
| Securing the Child in the Carrier | 87 |
| Removing the Child from the Carrier | 92 |
| Using as an Infant Carrier..... | 93 |
| LATCH Storage | 95 |
| Storing Your Instructions..... | 96 |
| SensorSafe™ | 97 |
| Securing Your Child Restraint in Aircraft..... | 107 |
| Installing the Carrier WITHOUT the Base in Aircraft..... | 108 |
| Replacement Parts | 114 |
| Care and Cleaning..... | 116 |
| Proper Disposal of this Child Restraint..... | 117 |
| Warranty..... | 118 |

CHILD REQUIREMENTS

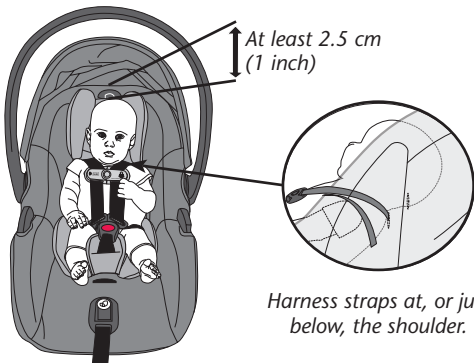
Warning: Failure to follow these Child Requirements could result in serious injury or death.

This child restraint is designed for use by children in **rear-facing** orientation only. To use this child restraint properly, children **MUST** meet the size and age requirements below. In addition, Evenflo recommends consulting with your child's physician before allowing your child to transition from a **rear-facing** to **forward-facing** child restraint.

The American Academy of Pediatrics (AAP) recommends keeping children **rear-facing** until they reach the maximum height or weight for their child restraint in **rear-facing** orientation. Additionally, some states' laws require children to be **rear-facing** until age 2. Accordingly, you will see this guidance reflected in the Child Requirements. Please review any applicable local, state or provincial laws related to child passenger safety before installing and using this child restraint.

Rear-facing Use

- *No restraint can guarantee absolute protection from injury in every crash.*
- 1.8 to 15.8 kg (4 to 35 lbs)
- 43 to 81 cm (17 to 32 in.) and top of child's head is at least 2.5 cm (1 in.) below the top of the child restraint seat back.



IMPORTANT: Once your child **exceeds** any of the size requirements above, they **MUST** discontinue use of this child restraint.

Premature Infant Use

Premature Infants

- **DO NOT** use this or any other child restraint with a premature infant until after consulting your doctor. Premature infants may have difficulty breathing when in a sitting position.

PREMATURE INFANT USE

Before using this child restraint for preterm or low birth weight infants, ensure the Child Requirements are met and follow the guidelines in this section.

According to the U.S. National Highway Traffic Safety Administration, a properly installed child restraint reduces the risk of death by over 70% for infants involved in crashes. Federal Motor Vehicle Safety Standard (FMVSS) 213 establishes design and dynamic performance requirements for child restraint systems. However, the standard has no minimum weight limit and does not address the special medical needs of preterm or low birth weight infants. To ensure that preterm and low birth weight infants are transported safely, the guidelines published by the American Academy of Pediatrics (AAP) in Pediatrics 2009;123:1424–1429 must be followed. All children should ride rear-facing in the vehicle as long as possible. Preterm and low birth weight infants are at additional risk of breathing difficulties and heart problems when placed in a child restraint. Evenflo requires that the evaluation

recommended by the AAP be conducted for all infants born earlier than 37 weeks and all newborn infants who weigh less than 5 lb at birth before their first car trip to check for breathing difficulties or heart rate problems when traveling in a rear-facing child restraint.

The AAP recommends that appropriate hospital staff observe your infant in the child restraint for a period of 90 to 120 minutes or the duration of travel, whichever is longer. This period of observation must be performed with the infant properly positioned as described in these instructions and with the child restraint placed at an angle that is approved for use in the vehicle. The hospital staff will check for any breathing difficulties or heart rate problems. Your child's pediatrician will let you know if there are any special considerations for travel. The number of trips and the duration of time the infant is seated in the child restraint should be minimized. A caregiver should ride in the back seat to monitor the infant during travel. You can learn more about the AAP's recommendations for observation of newborns and the guidelines for safe transportation of preterm and low birth weight infants, as well as other resources for parents and medical professionals, at **<https://www.healthychildren.org/english/safety-prevention/on-the-go/Pages/default.aspx>**

WARNING! *DEATH or SERIOUS INJURY can occur.*

General Warnings

- Child restraints should be used only for travel. Potential adverse health effects from excessive use of infant child restraints have been documented. You should limit the time spent each day in a child restraint as much as possible. You must **NEVER** use your child restraint as a sleeping environment in the home. **NEVER** leave your infant unattended in a child restraint in or out of the vehicle.
- Failure to follow these installation instructions and the instructions and warnings on the product can result in your child striking the vehicle's interior during a sudden stop or crash. Serious injury or death may result. These instructions and the instructions in your vehicle owner's manual must be followed carefully. If there is a conflict between the two, the vehicle owner's manual regarding child restraint installation must be followed.
- This child restraint **MUST ALWAYS** face the **rear of the vehicle**. Serious injury or death can occur if used forward-facing.

WARNING! *DEATH or SERIOUS INJURY can occur.*

- **NEVER** leave child unattended.
- **DO NOT** use child restraint if it is damaged, broken, or missing parts.
- **DO NOT** use this restraint if it has been involved in a crash. It must be replaced.
- **DO NOT** attach additional padding, toys or other devices not made by Evenflo or described in these instructions, to the child restraint. Items not tested with the child restraint could injure the child.
- Be sure that the handle is firmly locked in *Position 1 (Carry)* before lifting the child restraint (p 36).
- This child restraint must be securely belted to the vehicle at all times, even when unoccupied. An unsecured child restraint may injure someone if a crash occurs.
- **FOR LOW BIRTH-WEIGHT INFANT**, you must always use the infant body support. The infant body support must be used for infants who weigh less than 2.7 kg (6 lbs).

! WARNING! ***DEATH or SERIOUS INJURY can occur.***



DO NOT place rear-facing child seat on front seat with air bag. **DEATH OR SERIOUS INJURY** can occur. The back seat is the safest place for children 12 and under.

! WARNING! *DEATH or SERIOUS INJURY can occur.*



Air Bag Warnings

- **DO NOT** use this restraint in the front seat of a vehicle equipped with an air bag. Interaction between a rear-facing restraint and air bags may cause serious injury or death. If your vehicle has an air bag, refer to the vehicle owner's manual for child restraint installation. If the rear seat of your vehicle is equipped with side air bags, refer to the following information for proper usage.

Vehicles built prior to the 2002 model year:

DO NOT use this restraint in a vehicle seating position equipped with a side air bag unless authorized by the vehicle manufacturer.

Model year 2002 and newer vehicles:

Refer to your vehicle owner's manual before placing this restraint in a seating position equipped with a side air bag.

- **DO NOT** place any objects between the restraint and the side air bag, as an expanding air bag may cause the items to strike your child.

The forward-facing back seat is the safest place for children 12 and under.



! WARNING! *DEATH or SERIOUS INJURY can occur.*

Location Warnings

- **ALWAYS** read and follow exactly the instructions that accompany your vehicle and child restraint.
- According to accident statistics, children are safer when properly restrained in a rear seating position than in a front seating position. Generally, the center rear is safest and should be used if available. Children 12 and under should ride in the back seat of the vehicle.
- If you are unable to use the center rear seating position and have to install this child restraint directly behind a front vehicle seat, ensure that there is at least 38 mm (1.5 inches) of space between any part of the child restraint and the vehicle seat that is closest to the child's head. This space may be necessary for the child restraint to properly perform in certain types of crashes.
- **ONLY** use this child restraint on forward-facing vehicle seats. **DO NOT** use on vehicle seats which face the rear or side.



! WARNING! *DEATH or SERIOUS INJURY can occur.*

- **ONLY** use this child restraint on vehicle seats with backs that lock into place.
- Some child restraints do not fit all vehicles or all seating locations. There are thousands of combinations of vehicle makes, models, child restraint configurations, seat belt designs and seat cushion shapes. The easiest way to determine whether your child restraint is suitable for a particular seating position is to check for a tight installation. If the child restraint cannot be properly installed, **DO NOT** use this child restraint. Consult vehicle owner's manual, try a different seating location or call Evenflo at 1-800-233-2229 in the (U.S) and (Canada),.

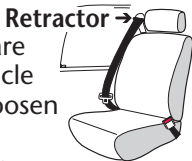
VEHICLE TYPES IN WHICH THE RESTRAINT SYSTEM CAN NOT BE USED:

This child restraint is not to be used in vehicles that do not have vehicle seat belts or UAS lower anchorages.

! WARNING! *DEATH or SERIOUS INJURY can occur.*

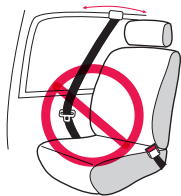
Vehicle Seat Belt Warnings

- **ALWAYS** read your vehicle owner's manual to determine what vehicle belts and retractors are used in your vehicle belt. The vehicle belt **MUST** lock and **MUST NOT** loosen after the seat belt is tightened.
- **DO NOT** use this child restraint if it moves more than 2.5 cm (1 in.) side to side or front to back at either the rear-facing or forward-facing belt path on the child restraint. Serious injury or death may result from poor installation. If you cannot tightly secure the child restraint, try again or move it to another location.
- **DO NOT** loosen the vehicle seat belt to provide more leg room as this will prevent the child restraint from protecting your child.
- **DO NOT** use this child restraint in a seating position with door-mounted seat belts.



! WARNING! *DEATH or SERIOUS INJURY can occur.*

- **DO NOT** use this child restraint in a vehicle with seat belts that automatically move along the vehicle frame when the door is opened.
- **DO NOT** use this child restraint in a vehicle equipped with lap belts that only lock during a sudden stop or crash (emergency locking retractor – ELR). You must use a seating location with a locking seat belt. Check your vehicle owner's manual to see if you have lap belts with ELRs.
- **DO NOT** use on vehicle seats when both portions of the vehicle belts are positioned forward of the seat crease.



! WARNING! *DEATH or SERIOUS INJURY can occur.*

Vehicle Seat Belt Warnings (cont.)

- **DO NOT** use with lap/shoulder belts with two retractors. If the vehicle seat belts are not routed and fastened correctly, the child restraint may not protect the child in a crash.
- **DO NOT** use with inflatable seat belts.
- Check your vehicle owner's manual to determine how to lock your seat belt for child restraint installation. The seat belt must be locked to properly secure the child restraint.
- **DO NOT** allow the vehicle seat belt release button to touch the child restraint. Accidental contact may cause the seat belt to release. If necessary, turn the seat belt release button away from the child restraint or move the child restraint to a different location.
- Failure to adjust the harness or vehicle seat belts snugly around the child may result in the child striking the vehicle's interior during a sudden stop or crash. Serious injury or death may occur.



WARNING! *DEATH or SERIOUS INJURY can occur.*

- This child restraint must be securely belted to the vehicle, **even when it is unoccupied**, since in a crash an unsecured child restraint system may injure other occupants.
- Fold-down armrests could pose a hazard to a rear-facing child in certain types of collisions. Consult your vehicle owner's manual before installing any rear-facing child restraint in front of a fold-down armrest.
- The headrest on the vehicle seat that the child faces should be placed in the lowest position. The vehicle seat back that the child faces must be fully padded and free of any hard objects.

! WARNING! *DEATH or SERIOUS INJURY can occur.*

Vehicle Seat Belt Warnings (cont.)

If you have any of these types of vehicle belt systems listed, these are **SAFE** to use to install your child restraint in the vehicle. Review vehicle owner's manual for specific instructions on child restraint installation. **LATCH** can be used **IN PLACE OF** these vehicle belt types. Refer to your vehicle owner's manual for **LATCH** locations.

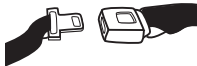
Lap Belt with Locking Latch Plate

Once buckled, the vehicle belt is tightened by pulling on the free end of the strap until the belt is tight.



Lap Belt with Automatic Locking Retractor (ALR)

The automatic locking retractor does not allow the lap belt to get longer once it is buckled. The vehicle belt is tightened by feeding seat belt webbing into retractor.

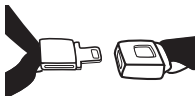


! WARNING! *DEATH or SERIOUS INJURY can occur.*

Lap/Shoulder Belt with Locking Latch Plate

The lap portion of this belt does not loosen once the belt is buckled.

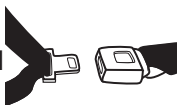
The vehicle belt is tightened by pulling up hard on shoulder belt and feeding the extra webbing into the retractor.



Lap/Shoulder Belt with Sliding Latch Plate with Locking Retractor

The latch plate slides freely along the lap/shoulder belt. Vehicle belts with sliding latch plates are typically locked at the shoulder belt retractor by buckling the belt and pulling all of the webbing out slowly to switch the retractor.

Check vehicle owner's manual for specific instructions. The vehicle belt is tightened after switching the retractor by pulling up on shoulder belt and feeding the webbing into the retractor.




! WARNING! *DEATH or SERIOUS INJURY can occur.*

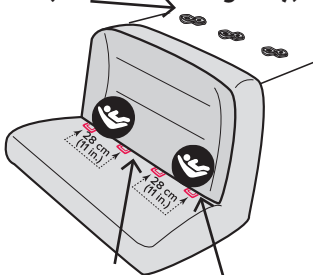
LATCH /UAS Warnings

What is **LATCH**?

LATCH is an acronym for (**L**ower **A**nchors and **T**ethers for **C**hildren) and refers to a pair of fixed Lower Anchors (or bars) and a Top Tether anchor that are built into your vehicle, in vehicles built after September 1, 2002.

The lower **LATCH** anchors are located in the crease, or bight, between the vehicle seat back and seat cushion, and if not visible, will typically be indicated by  symbols. Top tether anchors are located in various places behind the rear vehicle seat.

Vehicle Top Tether Anchor Points (Forward-Facing only)



**Vehicle
Seat
Crease**

**Vehicle
Lower
Anchors**

! WARNING! *DEATH or SERIOUS INJURY can occur.*

Center installation in a non-standard LATCH position: 

Center installation of this child restraint is permitted using inner Lower Anchor Bars from the outside seating positions if (1) your vehicle manual allows such installation; and (2) the inner Lower Anchor Bars from the outside seating positions are 28-51 cm (11-20 in.) apart.

LATCH typically offers an easier and more consistent installation. However, this child restraint can be safely installed using either **LATCH** or vehicle belts and meets the requirements of Federal Safety Standard FMVSS 213 with either installation method. Either method is safe for your child when installed correctly.

DO NOT install this child restraint with LATCH and the vehicle's seat belts at the same time. Your vehicle owner's manual may refer to this system as ISOFIX, Universal Anchorage System (UAS), or Lower Universal Anchorage System.

WARNING! *DEATH or SERIOUS INJURY can occur.*



LATCH /UAS Warnings

- The LATCH system is intended to be used **ONLY** as described in these instructions. Serious injury or death may result from misuse. Refer to your vehicle Owner's Manual for lower anchor bar positions in your vehicle.
- In addition to these instructions, read and follow your vehicle owner's manual regarding installation of the child restraint and LATCH. If there is a discrepancy, follow your vehicle owner's manual.
- **ONLY** use for securing convenience base to vehicle lower anchor bars.

WARNING! *DEATH or SERIOUS INJURY can occur.*

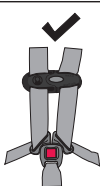
LATCH /UAS Warnings - *continued*

- **NEVER** attach two lower anchor assembly connectors to one vehicle lower anchor bar.
- **NEVER** use the vehicle seat belts when using the lower anchor connector assembly. Using both together can cause slack in a sudden stop or crash.
- When not in use, the lower anchor connector assembly should be securely stored in the storage area located under the convenience base. Keep out of reach of children.
- **ALWAYS** be sure that the lower anchor connectors are fully engaged onto the vehicle anchor bars by pulling hard on the lower anchor connector assembly harness. If they are not totally engaged, the lower anchor connector assembly will not secure your child restraint. Serious injury or death may result.
- **DO NOT** use this child restraint if it moves more than 2.5 cm (1 in.) side-to-side or front to back at the vehicle belt path. Serious injury or death may result from poor installation. If you can not tightly secure the child restraint, try again or move it to another location.

⚠ WARNING! *DEATH or SERIOUS INJURY can occur.*

Usage Warnings

⚠ WARNING



Children have **STRANGLED** in loose or partially buckled harness straps. Fully restrain the child even when carrier is used outside the vehicle.

- Use **ONLY** the SecureMax convenience base with the SecureMax carrier. The SecureMax carrier **WILL NOT LOCK** safely into any other convenience base and serious injury or death may result.
- **ALWAYS** check the restraint and buckle for hot surfaces before putting a child into the restraint. Your child could be burned.
- In cold weather, **DO NOT** dress the child in bulky clothing, like snowsuits, if the child is riding in a child restraint. This clothing makes it difficult to properly tighten the harness to the child, which may allow the child to be ejected from the restraint during a crash.

WARNING! *DEATH or SERIOUS INJURY can occur.*

Usage Warnings - continued

- When using this restraint in *Position 4* (Stand) (p. 36), **ONLY** use on level ground and **NEVER** prop the restraint up with any object.
- **NEVER** place this child restraint on beds, sofas, or other soft surfaces. The child restraint can roll over on soft surfaces and suffocate the child.
- **NEVER** place this child restraint near the edges of counter tops, tables, other high surfaces, or in shopping carts. The child's movements can cause the child restraint to slide and fall.
- The canopy is not intended to provide UV protection.

Safe Practices

- **Everyone rides buckled up or the vehicle does not go.** Make no exceptions for adults or children. If someone unbuckles, stop the vehicle. Being firm and consistent right from the start will mean fewer discipline problems as children get older. Besides, an unrestrained child or adult can be thrown into and injure other passengers.
- **NEVER** try to tend to a crying baby's needs while driving. **NEVER** take a baby out of a child restraint for comforting while the vehicle is moving.
- Always place the handle in *Position 3 or 4* before removing infant from carrier (p. 36).
- **DO NOT** allow a child to have objects such as lollipops or ice cream on a stick. The object can injure the child if the vehicle swerves or hits a bump.
- **DO NOT** feed an infant who is riding in a child restraint.
- Anything loose can be deadly in a crash. Put sharp or heavy items in the trunk.
- **DO NOT** dress the child in blanket sleepers or other clothing that would prevent the crotch strap from fitting snugly up against the child.

For Recall Information for U.S. Customers

- Child restraints could be recalled for safety reasons. You must register this restraint to be reached in a recall. Send your name, address, e-mail address if available, and the restraint's model number, and manufacturing date to:

Evenflo Company, Inc.

1801 Commerce Dr.

Piqua, OH 45356

or call 1-800-233-2229.

or register online at

www.evenflogold.com/registercarseat

Tear off and mail this part

Consumer: Just fill in your name and address and e-mail address.

Your Name _____

Your Street Address _____

City _____

State _____

Zip Code _____

E-mail Address _____

CHILD RESTRAINT REGISTRATION CARD

For Recall Information for U.S. Customers

- For recall information call the U.S. Government's Vehicle Safety Hotline at 1-888-327-4236 (TTY:1-800-424-9153),
or go to: **<http://www.NHTSA.gov>**

When used with the internal harness and properly installed pursuant to these instructions,



this restraint is certified for use only in passenger and multi-purpose passenger motor vehicles, buses and trucks equipped with either lap belts only or lap/shoulder belt systems, and aircraft.

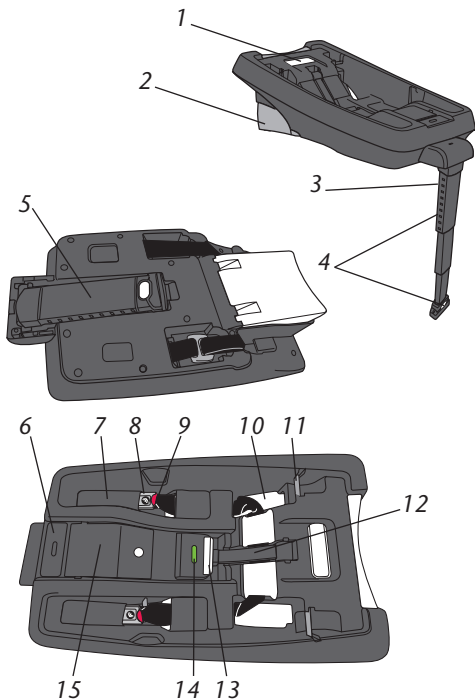
Tip!

Check with your airline before departure to make sure this restraint meets their requirements.

Refer to pages 107 to 113 for complete instructions on installing your child restraint in aircraft.

SecureMax Base

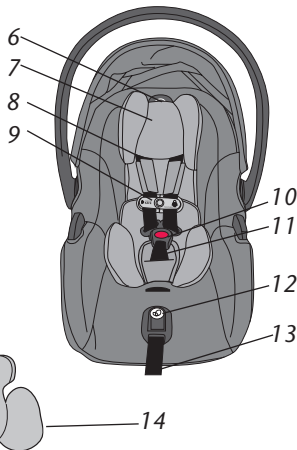
- 1.** *Recline foot adjustment button*
- 2.** *Recline foot*
- 3.** *SafeZone™ Load leg (Not available on all models)*
- 4.** *SafeZone™ Load leg adjustment buttons
(Not available on all models)*
- 5.** *SafeZone™ Load leg storage compartment
(stored position)
(Not available on all models)*
- 6.** *Recline indicator*
- 7.** *LATCH storage pocket*
- 8.** *LATCH connector*
- 9.** *LATCH release button*
- 10.** *Belt path*
- 11.** *Carrier attachment bar*
- 12.** *Fit-loc™ belt tightener*
- 13.** *Fit-loc™ belt tightener release button*
- 14.** *Fit-loc™ belt tightener lock indicator*
- 15.** *User Guide storage compartment*



Child Seat Features

1. Lap belt guides
2. Base attachment hooks
3. Seat pad
4. Canopy
5. Handle
6. Headrest adjustment button
7. Headrest
8. Harness
9. SensorSafe™ Chest clip
10. Harness buckle
11. Harness buckle strap
12. Harness adjustment button
13. Harness adjustment strap
14. Infant body support

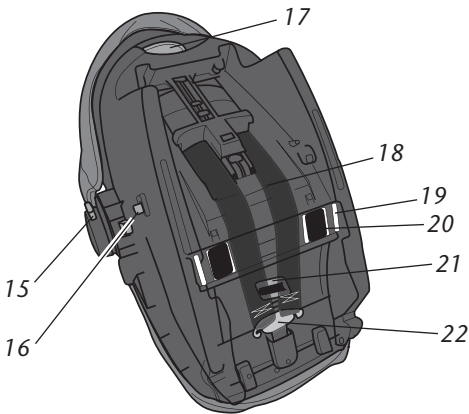
Front



- 15.** Handle adjustment button
- 16.** Stroller attachment buttons
- 17.** Carrier release handle
- 18.** Harness strap
- 19.** Waist strap slots
- 20.** Waist strap
- 21.** Harness buckle strap retainer
- 22.** Harness splitter plate

** Not all features are available on all models. Styles may vary.*

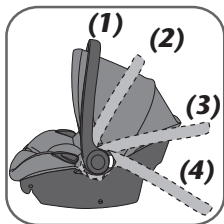
Back



Using the Handle

ALWAYS make sure the handle is securely locked in the upright carrying position **(1)** before carrying.

ANY locked position can be used in vehicle.



There are **4** positions:

- Carrying position **(1)**,
- Middle positions **(2 - 3)** **NEVER** use these positions to carry your child in the carrier.
- Stationary position **(4)**. **NEVER** use this position to carry your child in the carrier.

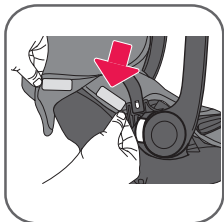


To change handle positions, squeeze **both Handle Releases** and rotate the handle to the desired position until it locks into place.

Installing the Canopy



To attach canopy, insert the canopy bow into the canopy mounts on both sides of the seat until they click into place.



Fasten the hook and loop patches on the canopy to the seat pad as shown. Repeat on other side of seat.



To remove, press tab on canopy bow and pull out. Canopy can be removed for washing.

! WARNING! *DEATH or SERIOUS INJURY can occur.*

The load leg helps minimize crash forces on a baby in a frontal crash. It allows the child restraint's safety system to absorb crash energy efficiently and to transfer forces more effectively by directing them to the vehicle floor.



- **NEVER USE** if the leg lifts the base off the vehicle seat.
- **NEVER** install the load leg in a seating position that will not allow the leg to be extended in a **LOCKED** position with firm contact with the vehicle floor.
- **NEVER** use the load leg if the indicator won't turn green when locked in position and touching the vehicle floor.
- **NEVER** place load leg on a storage door compartment on the vehicle floor if the vehicle manufacturer warns against it. Some vehicle manufacturers do not allow the use of load legs in all seating positions. Please refer to your vehicle's owner's manual before installing the base with the load leg.
- **NEVER** allow children to play with the belt tightener or the load leg.



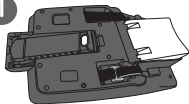
! WARNING! *DEATH or SERIOUS INJURY can occur.*

- The load leg **MUST** be locked in a locked position and the foot **MUST** be in contact with the vehicle floor.
- **NEVER** place load leg on an uneven floor in the rear of the vehicle, it must always be placed flat on the vehicle floor.
- **NEVER** use the load leg to recline the seat. The **recline adjustment foot** on the base is intended to recline the seat.
- **ALWAYS CHECK** to make sure the load leg is locked into the storage compartment in the base when it is not in use.



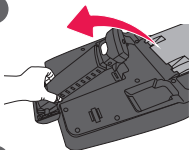
SafeZone™ Load Leg (cont.)

1



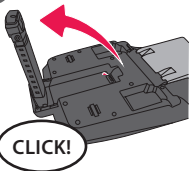
Turn the base over as shown.

2



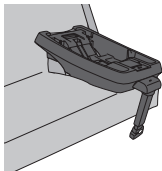
Pull the load leg out as shown. On top of load leg is an indicator. When it's fully rotated, the indicator will change to green.

3



Turn base over and place base on the seat as shown.

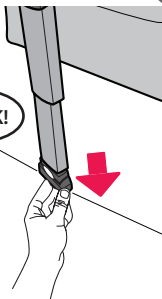
4



Note: After the base is installed.(p.52) place the carrier in the base. Then extend the load leg into position by following steps 5 and 6.

5

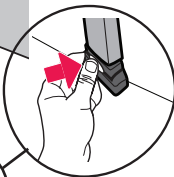
CLICK!



To extend load leg, pull leg down until it reaches the floor and the indicator turns green.

If it does not rest flat on the floor, push button and lower leg to floor to extend further. Indicator should turn green.

6



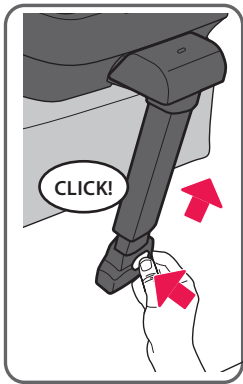
ALWAYS CHECK to make sure when the leg rests on the vehicle floor that it does not lift the base off the seat.

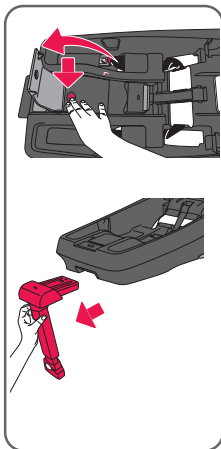
Leg must always lock into one of the open positions before using. If leg does not lie flat on the floor, move to another seating location or do not use the load leg in your vehicle.

Although we recommend using the base with the load leg, in some cases it may not be possible. If it is not possible you should store or remove the load leg. Refer to page 43 for removing the load leg from the base. To store load leg, follow steps below.

To store load leg when you are not using it, push the button on the lower portion of the load leg, slide the lower portion back up until it locks into place, then rotate back into the stored location. The tab on the load leg foot is pressed into a slot in the storage location on the base. And it locks into position.

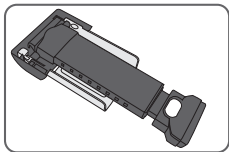
To store under base, reverse steps on page 40.





To remove load leg, open the user guide storage compartment and push the button inside the compartment while pulling the leg out of the front of the base.

Note: When not using the load leg, it should be stored in the load leg storage area under the base or removed from base. Preferred under the base.



Fold and store away from children in a place where it cannot be damaged.

Installation Checklist with Base

1. Secure SecureMax base to the vehicle seat.

- ✓ Base is securely installed with lower anchor connector assembly (p. 46-53).

OR

- ✓ Base is securely installed with vehicle seat belt (p. 58-61).

IMPORTANT: A properly secured base does **NOT** move more than 2.5 cm (1 in.) from side-to-side or from front-to-back **at the lower anchor connector assembly/vehicle belt path.**

- ✓ Base is adjusted so that level indicator is in correct color zone for your child (p. 69 and 70).
- ✓ If necessary, a towel/small blanket is rolled up and placed beneath the front edge of the base for additional leveling (p. 70).

Installation Checklist with Base (cont.)

2. Secure child to the carrier. Refer to p. 87-91.

- ✓ Harness straps are at, or below, shoulder level (p. 75).
- ✓ Both buckle tongues are fastened (p. 89).
- ✓ Chest clip is connected and positioned at armpit level (p. 90).
- ✓ Harness straps are snug against the child and you should not be able to pinch the harness (p. 91).
- ✓ Crotch strap is snug against the child but **NOT** under the child's bottom (p. 76).
- ✓ Waist straps are snug against the child but **NOT** under the child's legs (p. 80).

3. Check your work.

- ✓ The base does **NOT** move more than 2.5 cm (1 in.) from side-to-side or from front-to-back **at the lower anchor connector assembly/ vehicle belt path.**
- ✓ The base is level when level indicator is in the correct color zone for your child (p. 69 and 70).



Installing the Base with the Lower Anchor Connector Assembly

! WARNING! DEATH or SERIOUS INJURY can occur.

- This lower anchor connector assembly is intended to be used **ONLY** as described in these instructions. Serious injury or death may result from misuse.
- In addition to these instructions, read and follow your vehicle owner's manual regarding installation of the child restraint and LATCH. If there is a discrepancy, follow your vehicle owner's manual.
- **ONLY** use for securing base to vehicle lower anchor bars.
- **NEVER** attach two lower anchor assembly connectors to one vehicle lower anchor bar.
- **NEVER** use the vehicle seat belts when using the lower anchor connector assembly. Using both together can cause slack in a sudden stop or crash.
- When not in use, the lower anchor connector assembly should be securely stored in the storage area located under the convenience base or on the side of the base (p 93). Keep out of reach of children.



! WARNING! DEATH or SERIOUS INJURY can occur.

- **ALWAYS** be sure that the lower anchor connectors are fully engaged onto the vehicle lower anchor bars by pulling hard on the lower anchor connector assembly harness. If they are not totally engaged, the lower anchor connector assembly system will not secure your child restraint. Serious injury or death may result.
- **DO NOT** use this child restraint if it moves more than 2.5 cm (1 in.) side-to-side or front to back at the vehicle belt path. Serious injury or death may result from poor installation. If you can not tightly secure the child restraint, try again or move it to another location.
- This child restraint **MUST** face the rear of the vehicle.
- The carrier **MUST** be locked firmly into the base. Check by lifting up on the carrier.
- **NEVER** use this child restraint in the forward-facing position.



Installing the Base with the Lower Anchor Connector Assembly (cont.)



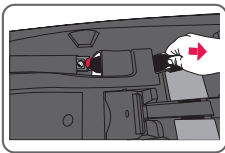
BEFORE installing base, make sure vehicle is on level ground. Place base on an approved **LATCH** vehicle seating location.



BEFORE installing the base, if you are using the load leg, you will need to unfold the leg, install the base, then extend the load leg. Please follow steps on pages 40-43.

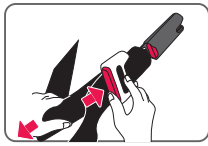
Remove **LATCH** straps from **LATCH** storage pockets by pulling the strap out as shown.

1



Extend the strap to its longest length.

2

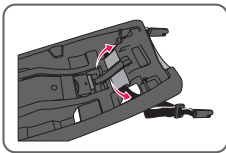


Installing the Base with the Lower Anchor Connector Assembly (cont.)

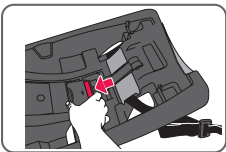


Route the **LATCH** belt through the belt path openings on both sides of base. Make sure not to twist the belt and make sure it lies flat.

3

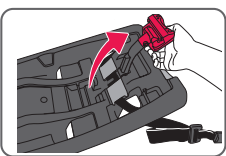


4



Squeeze the button on the Fit-loc belt tightener and lift it up as shown.

5





Installing the Base with the Lower Anchor Connector Assembly (cont.)

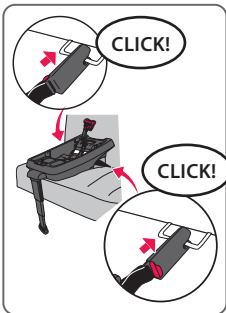
Push the **LATCH** connectors onto the vehicle lower anchor points on both sides of the base until you hear them **CLICK** onto the anchor points.

CHECK to make sure they are securely attached by pulling on them.

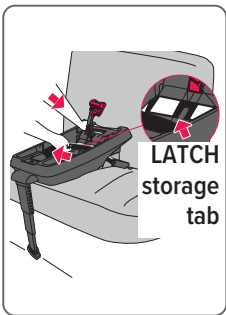
Pull the **LATCH** adjustment strap while pushing base tight against the seat. The **LATCH** strap will slide out from under the **LATCH** storage tab. If not, then pull out manually. Continue to pull on the adjustment strap to remove all the slack from the **LATCH** strap and to get the base snug against the vehicle seat.

Lay the free end of the belt across the belt path so it will be under the Fit-loc belt tightener after it has been closed.

6



7

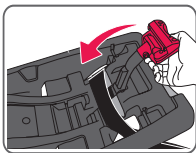


Installing the Base with the Lower Anchor Connector Assembly (cont.)



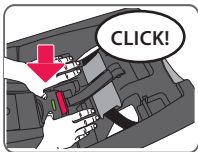
Close the Fit-loc belt tightener by pushing down with your two thumbs next to the indicator window. Keep pushing down until it locks into place and you see **GREEN** in the indicator window on the base.

8



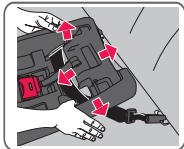
CHECK to make sure base is secure by holding both sides of the base near the **LATCH** strap and moving it from side to side and front and back. The **LATCH** belt should not loosen and the base should not move easily. The base should not move more than 2.5 cm (1 in.) from side to side or front to back.

9

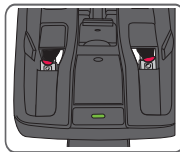


CHECK the recline indicator to make sure the base is correctly reclined. If it is not correctly reclined, remove **LATCH** connectors, unlock the belt tightener and adjust the foot on the base then re-install base. **CHECK** that the base is correctly reclined. Refer to pages 66-70 for Adjusting the Recline.

10



11





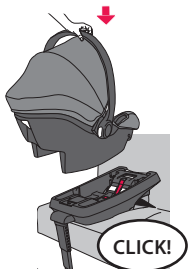
Installing the Base with the Lower Anchor Connector Assembly (cont.)

Attach the carrier into the base until you hear a click. Finish the load leg adjustment from pages 38-41.

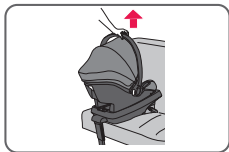
! **ALWAYS** Lift up on the handle of the carrier to make sure that it is securely attached in the base.

To remove the carrier from the base, squeeze the white release handle at the back of the carrier. Lift carrier away from the base.

12



13



14

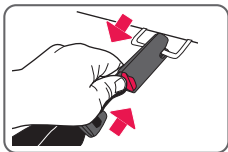


Installing the Base with the Lower Anchor Connector Assembly (cont.)



To remove base, open the Fit-loc belt tightener, then push button on **LATCH** connector then unhook from the anchor point.

15



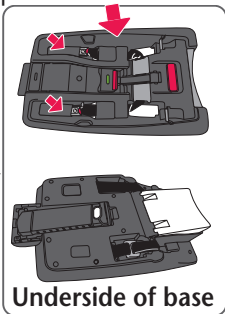
You may need to loosen the tension on the **LATCH** connector by loosening the **LATCH** adjustment strap.

Repeat steps as shown on the other side of the base.

Pass **LATCH** strap UNDER the base through the openings and push connectors into the **LATCH** storage pockets as shown. When storing, place the **LATCH** strap underneath the **LATCH** storage tab (p 93). To do so, open Fit-loc belt tightener and slide **LATCH** strap under tab. When storing, **NEVER** allow strap to lie on top of the base area as it might interfere with the carrier latching onto the carrier attachment bars.

16

LATCH strap **MUST** pass UNDER the base



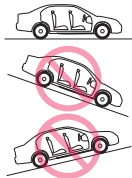
Underside of base



Installing the Base with the Vehicle Seat Belt/Shoulder Belt



BEFORE installing base, make sure vehicle is on level ground. Place base on an approved vehicle seating location.



BEFORE installing the base, if you are using the load leg, you will need to unfold the leg, install the base, then extend the load leg. Follow the steps on pages 40-43.

MAKE SURE LATCH belt is stored in the storage pockets before installing the base with the lap/shoulder belt. Squeeze the button on the Fit-loc belt tightener and lift it up as shown.

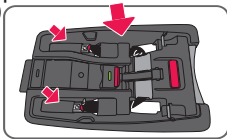
CHECK to make sure **LATCH** strap is under the **LATCH** storage tab.



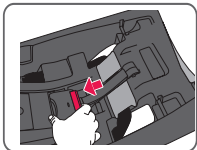
LATCH storage tab

LATCH strap **MUST** pass **UNDER** the base

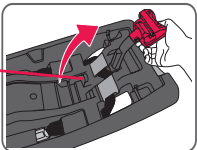
1



2



3



Installing the Base with the Vehicle Seat Belt/Shoulder Belt (cont.)

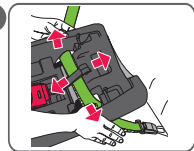
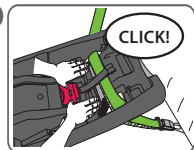
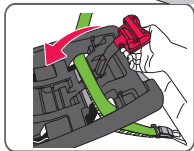
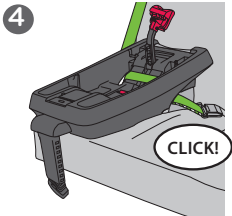


Route the lap/shoulder belt through the belt path openings on both sides of base and under the Fit-loc belt tightener. Make sure not to twist the belts and make sure they lie flat.

Fasten the buckle until it clicks into place. Pull shoulder belt to remove all the slack from the vehicle belt and to get the base snug against the vehicle seat.

Close the Fit-loc belt tightener by pushing down with your two thumbs next to the indicator window. Keep pushing down until it locks into place and you see **GREEN** in the indicator window on the base.

CHECK to make sure base is secure by holding both sides of the base near the vehicle belt and moving it from side to side and front and back. The lap/shoulder belt should not loosen and the base should not move easily. The base should not move more than 2.5 (1 in.) from side to side or front to back.





Installing the Base with the Vehicle Seat Belt/Shoulder Belt (cont.)

CHECK the recline indicator to make sure the base is correctly reclined. If it is not correctly reclined, unlock the Fit-loc belt tightener, unbuckle lap/shoulder belt, and adjust the foot on the base then re-install base.

CHECK that the base is correctly reclined. Refer to pages 66-70 for Adjusting the Recline.

Attach the carrier into the base until you hear a click. Finish the load leg adjustment from pages 38-41

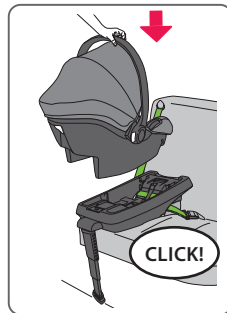


ALWAYS Lift up on the handle of the carrier to make sure that it is securely attached in the base.

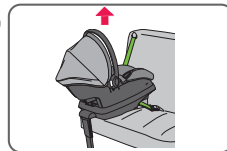
8



9



10

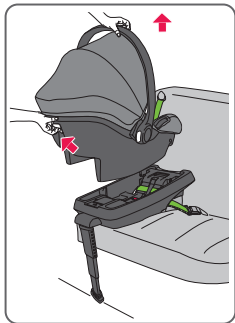




To remove the carrier from the base, squeeze the release handle at the back of the carrier. Lift carrier away from the base.

11

To remove the base from vehicle, squeeze the button on the Fit-loc belt tightener and lift it up (see Step 2 and 3 on page 58) then unbuckle the vehicle belt and remove it from the belt path.

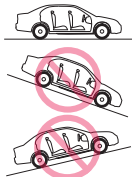




Installing the Base with the Vehicle Seat Belt



BEFORE installing base, make sure vehicle is on level ground. Place base on an approved vehicle seating location.

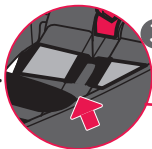


BEFORE installing the base, if you are using the load leg, you will need to unfold the leg, install the base, then extend the load leg. Please follow steps on pages 40-43.

MAKE SURE LATCH belt is stored in the storage pockets before installing the base with the lap belt.

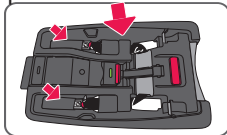
Squeeze the button on the Fit-loc belt tightener and lift it up as shown.

CHECK to make sure **LATCH** strap is under the **LATCH** storage tab.

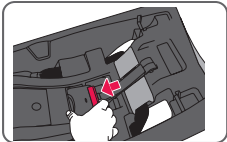


LATCH storage tab

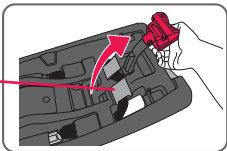
1 LATCH strap **MUST** pass **UNDER** the base



2



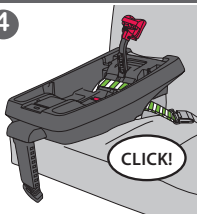
3



Installing the Base with the Vehicle Seat Belt (cont.)

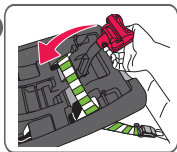


Route the lap belt through the belt path **4** openings on both sides of base and under the Fit-loc belt tightener. Make sure not to twist the belt and make sure it lies flat. Fasten the buckle until it clicks into place.



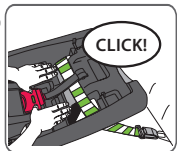
Pull the free end of the lap belt to remove all the slack and to get the base snug against the vehicle seat. Lay the free end of the belt across the belt path so it will be under the Fit-loc belt tightener after it has been closed.

5



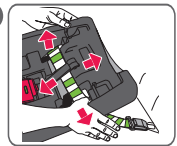
Close the Fit-loc belt tightener by pushing down with your two thumbs next to the indicator window. Keep pushing down until it locks into place and you see **GREEN** in the indicator window on the base.

6



CHECK to make sure base is secure by holding both sides of the base near the vehicle belt and moving it from side to side and front and back. The lap belt should not loosen and the base should not move easily. The base should not move more than 2.5 cm (1 in.) from side to side or front to back.

7






Installing the Base with the Vehicle Seat Belt (cont.)

CHECK the recline indicator to make sure the base is correctly reclined. If it is not correctly reclined, unlock the Fit-loc belt tightener, unbuckle lap belt, and adjust the foot on the base then re-install base.

CHECK that the base is correctly reclined. Refer to pages 66-70 for Adjusting the Recline.

Attach the carrier into the base until you hear a click. Finish the load leg adjustment from pages 38-41.

 **ALWAYS** Lift up on the handle of the carrier to make sure that it is securely attached in the base.

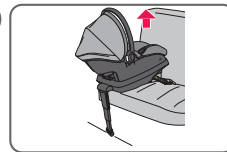
8



9



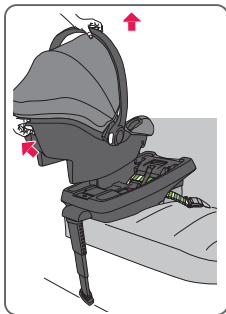
10





To remove the carrier from the base, squeeze the release handle at the back of the carrier. Lift carrier away from the base.

11



To remove the base from vehicle, squeeze the button on the Fit-loc belt tightener and lift it up (see Step 2 and 3 on page 58) then unbuckle the vehicle belt and remove it from the belt path.

Installation Checklist without Base

1. Place the child in the carrier.

- ✓ The child's back and bottom are flat against the back and bottom surfaces of the carrier.
- ✓ Top of child's head is at least 2.5 cm (1 in.) below the top of the child restraint seat back.

2. Secure child to the carrier. Refer to p. 87.

- ✓ Harness straps are at, or just below, shoulder level (p. 75).
- ✓ Both buckle tongues are fastened (p. 89).
- ✓ Chest clip is connected and positioned at armpit level (p. 89).
- ✓ Harness straps are snug against the child and you should not be able to pinch the harness (p. 91).
- ✓ Crotch strap is snug against the child, but **NOT** under the child's bottom (p. 76).
- ✓ Waist straps are snug against the child, but **NOT** under the child's legs (p. 80).

3. Secure child restraint to the vehicle seat.

- ✓ Carrier is securely installed with vehicle seat belt (p. 66-69).
- ✓ The level line is level with ground (p. 71).
- ✓ If necessary, a towel/small blanket is rolled up and placed beneath the front edge of the carrier so the child's head lies back comfortably (p. 65).

4. Check your work.

- ✓ To properly protect your child, the carrier **MUST NOT** move more than 2.5 cm (1 in.) from side-to-side or from front-to-back **at the vehicle belt path.**



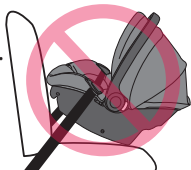
Installing the Carrier with the Vehicle Seat Belt/Shoulder Belt

⚠ WARNING

Improper recline of your child restraint or base could cause serious injury or death.

If the child restraint is too upright, an infant's head could drop forward and cause suffocation or breathing problems.

If the child restraint is too reclined, a sudden stop or vehicle crash could cause injury to a child's neck or shoulders.



When using the carrier **WITHOUT** base:

- 1) Make sure vehicle is on level ground.
- 2) Check the **RED** level line on the label to make sure that it is level with the ground.
- 3) If it is not level, see page 65 on how to adjust carrier with rolled towel.

RED line **MUST** be level with the ground when installed in vehicle **WITHOUT** the base.



Installing the Carrier with the Vehicle Seat Belt/Shoulder Belt



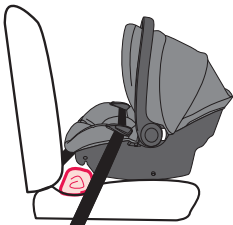
When using the carrier **WITHOUT** the base, **ALWAYS CHECK** for **tight installation** and the red level line on the carrier each and every time you use your child restraint to make sure it is level with the ground. If it is not place a tightly rolled towel under the foot end of the carrier as shown to level it.

RED line **MUST** be level with the ground when installed in vehicle **WITHOUT** the base.



ALWAYS check that your child is in a comfortable position and has not slid down in the seat or moved into an awkward position. Your child's head should be flat against the carrier and not tilted toward their chest.

NEVER place a rolled towel under the child's head end of the carrier. If towel is used to adjust the seat installation angle, it must only be used in position shown.

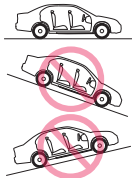




Installing the Carrier with the Vehicle Seat Belt/Shoulder Belt



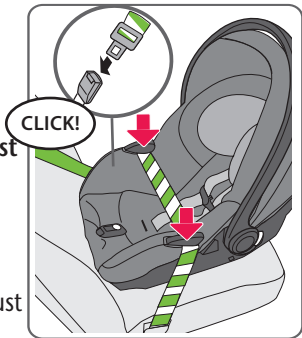
BEFORE installing carrier, make sure vehicle is on level ground. Place carrier on an approved vehicle seat location in a rear-facing position.



Route the lap belt portion of the vehicle belt through the lap belt guides on both sides of carrier. Make sure not to twist the belt and make sure it lies flat.

NEVER place the shoulder portion of the vehicle belt under the lap belt guides. Always position shoulder portion of vehicle belt against the back of the vehicle seat.

Fasten the vehicle belt to the buckle until it clicks into place. If vehicle belt latch plate does not lock, then the retractor must be switched to locking mode.



CHECK the vehicle owner's manual and page 16-21 in this manual to see how to lock your seat belt. If seat belt does not lock, try another seating position.

Installing the Carrier with the Vehicle Seat Belt/Shoulder Belt (cont.)

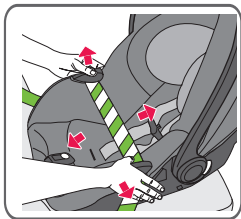
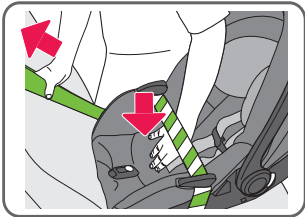


Push down in center of carrier and pull the shoulder belt portion of the vehicle belt to tighten carrier against the vehicle seat.

CHECK to make sure carrier is secure by holding both sides near the lap belt guides and moving it from side to side and front and back. The lap belt should not loosen and the carrier should not move easily. The carrier should not move more than 2.5 cm (1 in.) from side to side or front to back.

After installing carrier without base check the **RED** level line on the label to make sure that it is level with the ground.

If seat is still not level, refer to pages 64-65, **when using the carrier WITHOUT the base.**



RED line **MUST** be level with the ground when installed in vehicle **WITHOUT** the base.

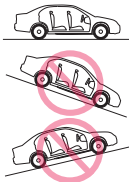




Installing the Carrier with the Vehicle Seat Belt



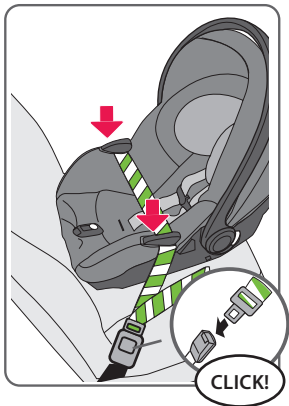
BEFORE installing carrier, make sure vehicle is on level ground. Place carrier on an approved vehicle seat location in a rear-facing position.



Route the lap belt through the lap belt guides on both sides of carrier. Make sure not to twist the belt and make sure it lies flat.

Fasten the vehicle belt to the buckle until it clicks into place. If vehicle belt latch plate does not lock, then the retractor must lock.

CHECK the vehicle owner's manual and page 16-21 in this manual to see how to lock your seat belt. If seat belt does not lock, try another seating position.



Installing the Carrier with the Vehicle Seat Belt (cont.)

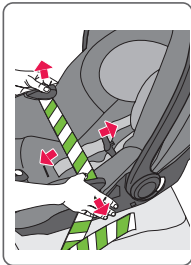
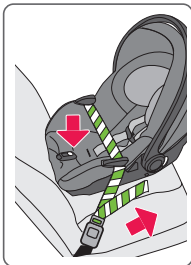


Push down in center of carrier to tighten carrier against the vehicle seat while pulling on the free end of the vehicle belt. Once tightened, tuck the free end of the strap near the vehicle seat crease.

CHECK to make sure carrier is secure by holding both sides near the lap belt guides and moving it from side to side and front and back. The lap belt should not loosen and the carrier should not move easily. The carrier should not move more than 2.5 cm (1 in.) from side to side or front to back.

After installing carrier without base check the **RED** level line on the label to make sure that it is level with the ground.

If seat is still not level, refer to page 62-63, **when using the carrier WITHOUT the base.**



RED line **MUST** be level with the ground when installed in vehicle **WITHOUT** the base.



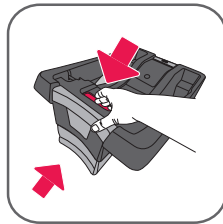
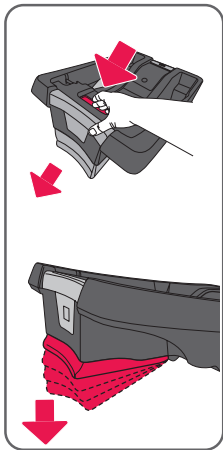
Adjusting the Recline

The slope of the vehicle seats vary so your child restraint base has a feature for adjusting the proper recline angle.

The base has 4 recline adjustment positions for the foot.

To raise the base, push the button and the foot will spring down into one of the 4 positions until it locks into place.

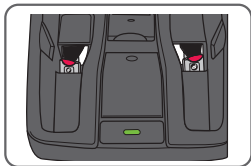
To lower the base, push the button and push foot up into base until it locks into desired position.



Checking the Recline with the Base

When using the carrier and the base together:

- 1) Make sure vehicle is on level ground.
- 2) Only use the recline indicator on the base to make sure the seat and base are correctly reclined.



- 3) Recline base until you see only green or only blue.

Blue : 4-20lbs

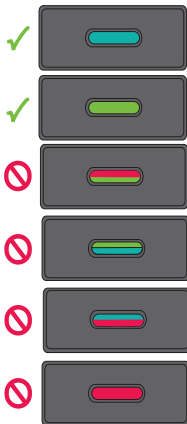
(1.8 -9.1 kg)

Green : 20-35lbs

(9.1 -15.9kg)

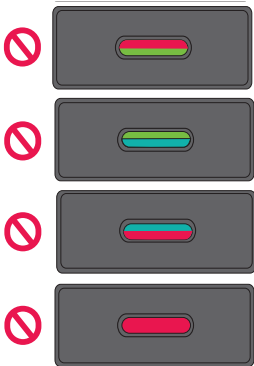
NEVER allow green and blue to be showing in the window at the same time. The recline is **NOT** correct.

If seat is still not correctly reclined, see Adjusting the Recline.

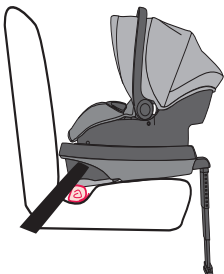


Checking the Recline with the Base (cont.)

When using the carrier with the base, if the foot is in the lowest position and the indicator still shows red or blue and green at the same time you may need to place a tightly rolled towel under the foot end of the base in order to get the seat to become properly reclined.



NEVER place a rolled towel under the child's head end of the base. If towel is used to adjust the seat installation angle, it must only be used in position shown.



! WARNING

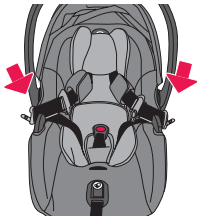
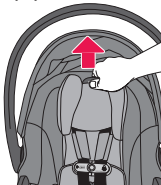
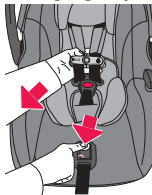
Improper placement of the harness straps and buckle strap increases the risk of serious injury or death in a sudden stop or vehicle crash.

Depending on whether you have a smaller or larger size child, you will need to adjust the headrest, infant body support, buckle strap and waist strap locations. Please review the following sections on pages 76-85 before changing any strap positions.

Rotate handle out of the way. From the front of seat, you will need to loosen the harness straps by pushing the harness adjustment button and pulling the harness straps toward you.

Pull the headrest up by squeezing the button at the top of the headrest.

Hook the harness buckle tongues over the vehicle belt path guides to get them out of the way to allow easier placement of child in the seat.

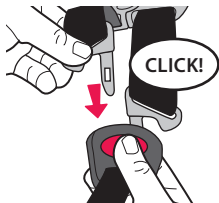


Placing Your Child in the Carrier (cont.)

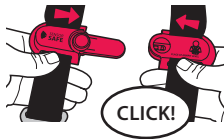
Place your child in the carrier with their bottom pushed back and their back flat against the seat.



Position the harness straps around the child's arms and the buckle strap between the child's legs, then buckle.



Fasten chest clip together and center on child's chest level with their armpit.



Squeeze headrest adjustment button and lower headrest to the closest position **AT** or **JUST BELOW** the child's shoulders.



CHECK to make sure headrest is in a locked position by pushing down.

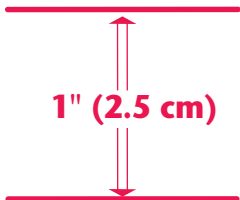
Placing Your Child in the Carrier (cont.)

Pull all slack out of the harness system, starting with the webbing around the child's legs and moving up toward their shoulders.

Slowly pull harness adjuster strap to make the shoulder straps snug around the child's shoulders. **BE CAREFUL. DO NOT** allow the chest clip to slide up into their neck when tightening.



CHECK the child's head **MUST BE 1" (2.5 cm) or more below** the top of the seat as shown.



Hold up to top of seat to check for 1" spacing.

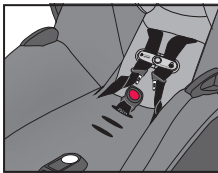
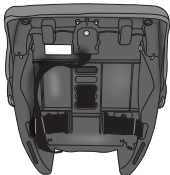


Changing the Crotch Strap Position

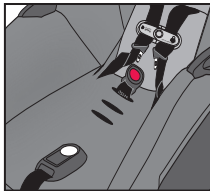
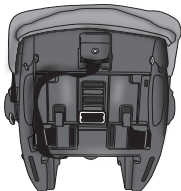
As your child grows, you will need to change the crotch strap position so that it is in the slot closest to your child. The crotch strap should **ALWAYS** be as close as possible to, but **NEVER** under, the child's bottom.

Crotch Strap in the Newborn Position

NEVER use this position for children weighing more than 3.6 kg (8 lbs).

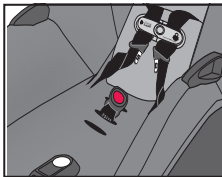
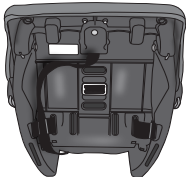


Crotch Strap in the Rear Slot

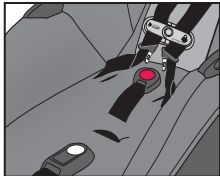
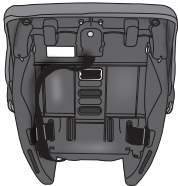


Changing the Crotch Strap Position (cont.)

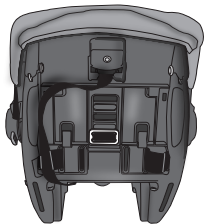
Crotch Strap in the Middle Slot



Crotch Strap in the Front Slot



Changing the Crotch Strap Position (cont.)



- 1 To reposition crotch strap, loosen the harness straps and move the strap out of the way. Remove the crotch strap anchor from its position on the bottom of the carrier, and push the anchor up through the slot to the top of the seat.

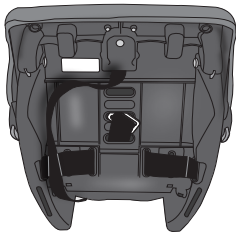
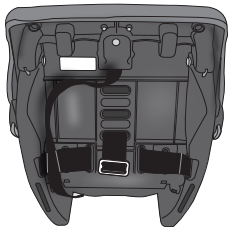


- 2 Insert the crotch strap anchor into the slot that is the closest to the child, but **NEVER** under the child's bottom.



Make sure the anchor is completely through and is laying flat against the bottom of the seat. Pull up on the crotch strap to make sure it is securely fastened.

Changing the Crotch Strap Position (cont.)



For newborn position, push the anchor down through the rear slot, then feed it back up through the middle slot.

Make sure the anchor is completely through the middle or front slot and is laying flat against the bottom of the seat.

NEVER use this position for children weighing more than 3.6 kg (8 lbs).



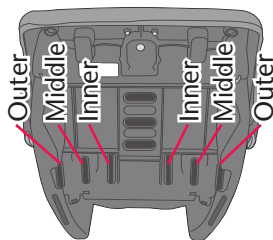
Rear to
Middle



Rear to
Front

Changing the Waist Strap Position

As your child grows, you will need to change the waist strap position so that it is in the slot closest to your child. The waist strap should **ALWAYS** be as close as possible to, but **NEVER** under, the child's legs.



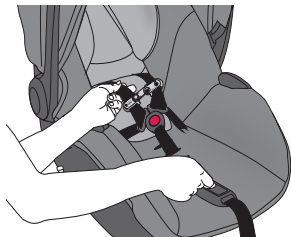
Approximate
Child Size:

Waist Strap
Position:

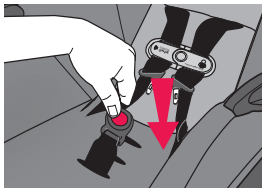
| | | |
|--------|------------------------------|--------|
| Small | 1.8 - 2.7 kg (4 - 6 lbs) | Inner |
| Medium | 2.7 - 9 kg (6 - 20 lbs) | Middle |
| Large | 9 - 15.8 kg (20 - 35 lbs) | Outer |

1

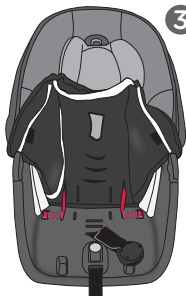
To reposition waist straps, loosen the harness straps by pressing the harness release button while pulling on the harness straps.



Changing the Waist Strap Position (cont.)



- 2** Push the crotch strap through the slot in the seat pad

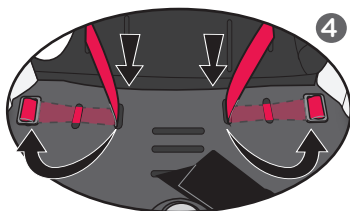


- 3** Unhook the front of the child restraint's seat pad and move it out of the way to expose the waist strap slots and anchors.

Remove the waist strap anchor from its position on top of the seat, and push the anchor down through the slot to the bottom of the seat. Then push anchor up through the slot to the top of the seat pad. Repeat on other side.



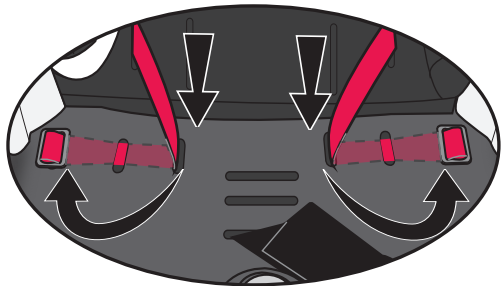
Changing the Waist Strap Position (cont.)



- 4 Push the anchor down through the appropriate slot to the bottom of the seat. Then push anchor up through the appropriate slot to the top of the seat.

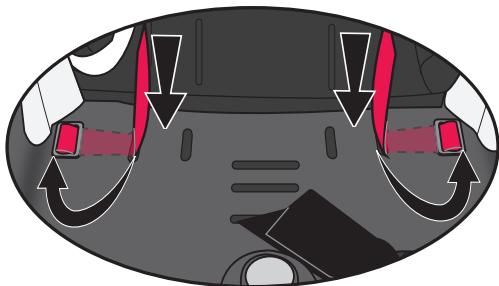
Note: See images (p. 80) to find the appropriate waist strap slots for your child's size.

Small size baby

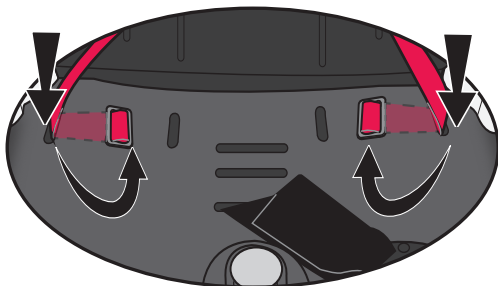


Changing the Waist Strap Position (cont.)

Medium size baby

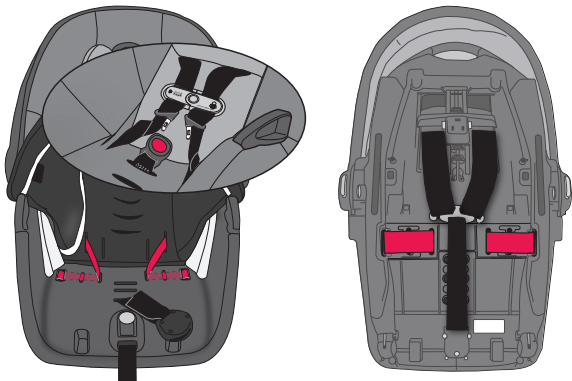


Large size baby



Changing the Waist Strap Position (cont.)

Small size baby

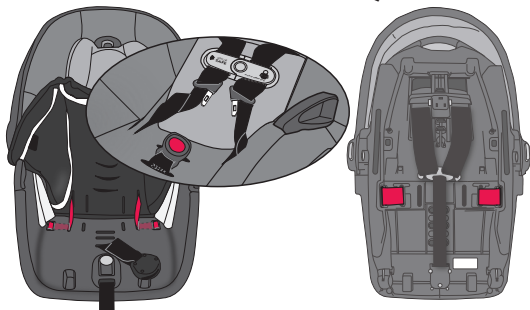


- 5** Rehook the front of the child restraint's seat pad .

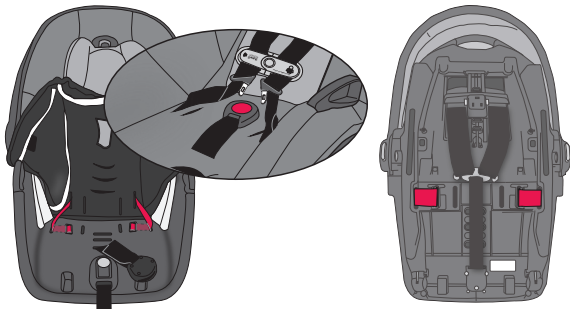
Make sure the anchor is completely through and is laying flat against the bottom of the seat. Pull up on the crotch strap to make sure it is securely fastened.

Changing the Waist Strap Position (cont.)

Medium size baby



Large size baby



⚠ WARNING

To prevent ejection or serious injury:

- For low birth-weight infant, you **MUST** always use the infant body support. The infant body support **MUST BE USED** for infants who weigh less than 2.7 kg (6 lbs).
- Discontinue using the infant body support when it presses the child's legs uncomfortably against the buckle.
- If you have moved the buckle strap to the slot closest to the child and there is still a gap between the buckle strap and the child, place a tightly rolled washcloth between the child and the buckle strap to prevent child slouching or sliding down into the buckle strap.



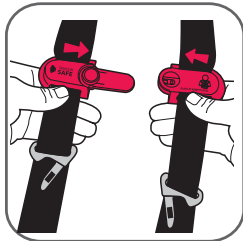
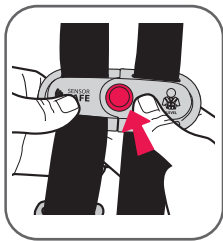
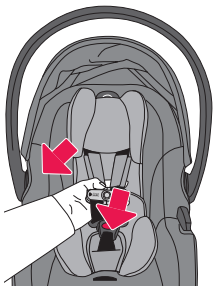
⚠ WARNING

Improper placement of the harness straps and buckle strap increases the risk of serious injury or death in a sudden stop or vehicle crash.

Rotate handle out of the way.

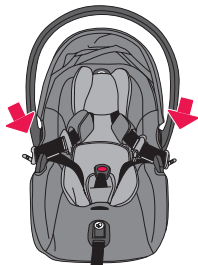
Push the harness adjuster button then pull the harness straps toward you.

Open the chest clip by pressing the button in the center as shown. Separate the two pieces as shown and move the straps out of the way.



Securing Your Child in the Carrier (cont.)

Hook the harness buckle tongues over the vehicle belt path guides to get them out of the way to allow easier placement of child in the seat.



Place your child in the carrier with their bottom pushed back and their back flat against the seat. Place the harness straps around your child.

Squeeze headrest adjustment button and lower headrest to the closest position **AT** or **JUST BELOW** the child's shoulders.

CHECK to make sure headrest is in a locked position by pushing down.



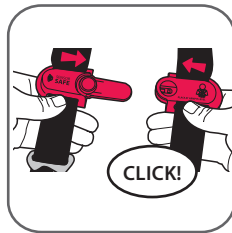
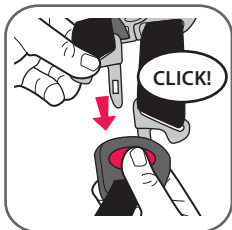
Securing Your Child in the Carrier (cont.)

Insert the buckle tongues into the buckle as shown. **MAKE** sure you hear each buckle tongue click into place. Pull up on the harness strap to ensure the buckle tongues are engaged.

DO NOT use child restraint if buckle tongues **DO NOT** click into the buckle, please call Customer Service before using the child restraint.

Fasten chest clip together and center on child's chest level with their armpit.

Pull all slack out of the harness system, starting with the webbing around the child's legs and moving up toward their shoulders.



Securing Your Child in the Carrier (cont.)

Slowly pull harness adjuster strap to make the shoulder straps snug around the child's shoulders.

BE CAREFUL. DO NOT allow the chest clip to slide up into their neck when tightening.

MAKE SURE to center the chest clip at armpit level.

CHECK to make sure harness is **AT** or **JUST BELOW** the child's shoulders.

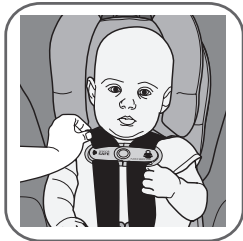


Securing Your Child in the Carrier (cont.)

CHECK STEP:

MAKE SURE the straps are flat, not twisted and snug. If you can pinch a fold in the strap it is not snug.

A snug strap should not allow any slack. It lies in a relatively straight line without sagging. It does not press on the child's flesh or push the child's body into an unnatural position.



IMPORTANT: The crotch strap should **ALWAYS** be as close as possible to, but **NEVER** under, the child's bottom. Adjust the crotch strap if necessary (p. 76-79). The waist straps should **ALWAYS** be as close as possible to, but **NEVER** under, the child's legs. Adjust the waist straps if necessary (p. 80-85).

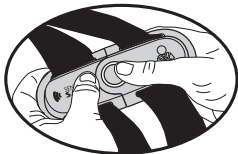
Removing the Child from the Carrier

1



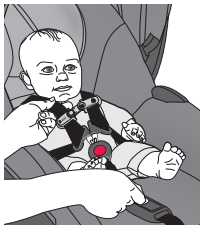
Press the red buckle release, and remove the buckle tongues.

2



Push the release button and pull the chest clip apart.

3

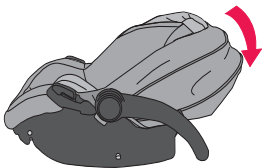


To loosen the harness straps, press the harness release button while pulling upward on the harness straps.

Using as an Infant Carrier

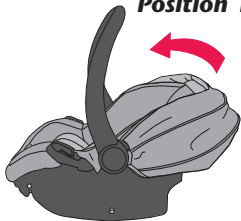
Secure the child in the carrier by following “Securing the Child in the Carrier” on page 87.

Position 4



To use as a stand: Squeeze both handle releases and rotate the handle to **Position 4 (Stand)** until it locks into place and the carrier rests on a level surface.

Position 1



To use as a carrier: Squeeze both handle releases and rotate the handle to **Position 1 (Carry)** until it locks into place. Carry at your side, using the handle as shown.

! WARNING!

The harness **MUST** be securely buckled **at all times**.



⚠️ WARNING! *DEATH or SERIOUS INJURY can occur.*

- **NEVER** place this carrier near the edges of counter tops, tables, or other high surfaces. The child's movements can cause the carrier to slide and fall.
- **NEVER** leave the child in this carrier when the harness straps are loose or undone. Children have **STRANGLED** in loose or partially buckled harness straps. Fully restrain the child even when carrier is outside the vehicle.
- **Fall Hazard:** The carrier can fall from the shopping cart. Do not use on shopping cart.



-
- **DO NOT** carry on your hip.

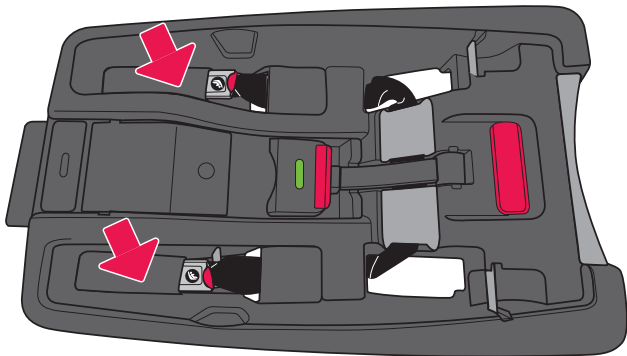




Insert **LATCH** connectors into the **LATCH** storage pockets on the base as shown.

DO NOT store the **LATCH** on top of the base.

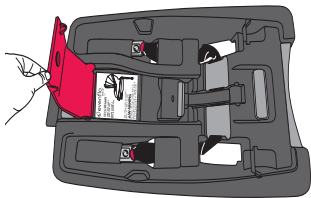
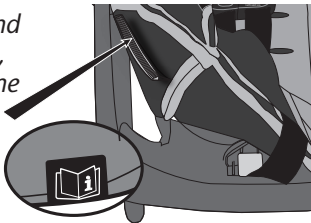
LATCH strap **MUST** pass **UNDER** the base.



Storing Your Instructions

The preferred storage

After thoroughly reading and following these instructions, store instructions look for the logo on front of seat pad. Then store under the seat pad inside a pocket of the seat pad as shown.




Open the door on the base and insert the manual into the instruction manual compartment or insert it into the pocket under the front edge of seat pad.

For future reference, record the model number of your child restraint AND the date of manufacture below.

Model Number: _____

Date of Manufacture: _____



NEVER INSTALL or use this Child Restraint until you have read and understand the instructions in this manual AND in your vehicle Owner's Manual  . If there is a conflict between the two, the vehicle Owner's Manual must be followed.

This seat works with the SensorSafe™ Application* which can be downloaded from: The App Store® or Google Play™.**

The SensorSafe™ Application* can provide the following information directly to your smartphone:

- Reminder that your child is still in your automobile
- Current temperature of your automobile interior
- User Manuals
- Installation Videos
- Customer care contact information

SensorSafe™ Technology*

Questions? Comments?:

Visit us at: www.evenflogold.com or www.evenflogold.ca
Or call ParentLink at: 1-800-233-2229 in the (U.S) and (Canada).

* Not available on all models. Styles may vary.

** Trademarks are the property of their respective owners.

GENERAL INFORMATION ABOUT SENSORSAFE™

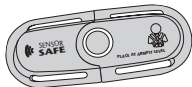
Secure your child into the child restraint as you would normally. The SensorSafe™ Receiver Plug monitors both the Chest Clip Transmitter and the vehicle. When you arrive at your destination and turn your vehicle off, the SensorSafe™ system sounds a series of gentle tones reminding you that your baby is in the vehicle. **Download the SensorSafe™ application to manage your device, check manuals and set up your family alerts. Install it once and SensorSafe™ is always ready to alert you.**



This product contains magnets. Before use, consult your family doctor about the compatibility of this product with pacemakers and similar devices.

IMPORTANT USAGE INFORMATION

- The SensorSafe™ system consists of two components:
1. The Chest Clip Transmitter and 2. The Receiver Plug.
The system will not work unless both of these components are present in the vehicle with the Receiver installed in the vehicle's OBDII port (p. 103).



CHEST CLIP TRANSMITTER



RECEIVER PLUG

- This system works with the SensorSafe™ Application which can be downloaded from: The App Store® or Google Play™.**

**** Trademarks are the property of their respective owners.**

GENERAL INFORMATION ABOUT SENSORSAFE™ (CONT.)

- The SensorSafe™ Chest Clip is designed to go into a sleep mode after being clipped for 12 hours. Although 12-hour vehicle trips without stops are uncommon and not recommended, the Chest Clip must be opened and closed after 12 hours to reactivate the SensorSafe™ system.
- The Receiver Plug works ONLY with 2008 or newer vehicles purchased in the U.S. or Canada. If you would like to use the SensorSafe™ Chest Clip with a Hybrid or Electric vehicle, you will need to download the application from The App Store® or Google Play™.** Additional Receiver Plugs can be purchased for additional vehicles. If you have questions, please contact Evenflo's ParentLink at: 1-800-233-2229 in the (U.S) and (Canada), to order a compatible Receiver Plug.

BATTERY USAGE

- To preserve battery life, always store the SensorSafe™ Chest Clip in the unclipped position.
- The Chest Clip ships with 1-button cell lithium battery installed that can be replaced.
- The SensorSafe™ is designed to alert you of a low battery. If your Chest Clip battery is getting low, the SensorSafe Receiver will make a “low battery” alarm and LED will flash 10 times when the Chest Clip is closed. This “low battery” alarm will sound different from the beeps you typically hear when activating your SensorSafe™ system. The SensorSafe™ Chest clips uses a Panasonic button battery CR2032. If you should have issues with SensorSafe™ hardware, please contact Evenflo's ParentLink at: 1-800-233-2229 in the (U.S) and (Canada), or online at:
www.evenflogold.com or **www.evenflogold.ca**
to order a replacement battery/parts.

SensorSafe™ Technology

Questions? Comments?:

Visit us at: www.evenflogold.com or www.evenflogold.ca

Or call ParentLink at: 1-800-233-2229 in the
(U.S) and (Canada).

This device meets the requirements of SAE J3005.

FCC Certified:

Chest Clip Model: SOSR3, FCC ID: 2ABS2-SOSR3

Receiver Plug Model: SS2, FCC ID: 2ABS2-SS2

This device complies with Part 15 of the FCC Rules.

Operation is subject to the following two conditions:

- (1) This device may not cause harmful interference.
- (2) This device must accept any interference received, including interference that may cause undesired operation.

WARNING!

Changes or modifications not expressly approved by the party responsible for compliance could void the user's authority to operate the equipment.

NOTE: This equipment has been tested and found to comply with the limits for a Class B digital device, pursuant to Part 15 of the FCC Rules. These limits are designed to provide reasonable protection against harmful interference in a residential installation.

GENERAL INFORMATION ABOUT SENSORSAFE™ (CONT.)

This equipment generates, uses, and can radiate radio frequency energy and, if not installed and used in accordance with the instructions, may cause harmful interference to radio communications. However, there is no guarantee that interference will not occur in a particular installation. If this equipment does cause harmful interference to radio or television reception, which can be determined by turning the equipment off and on, the user is encouraged to try to correct the interference by one or more of the following measures:

- Reorient or relocate the receiving antenna.
- Increase the separation between the equipment and receiver.
- Connect the equipment into an outlet on a circuit different from that to which the receiver is connected.
- Consult the dealer or an experienced radio/TV technician for help.

Chest Clip:

RF warning statement:

The device has been evaluated to meet general RF exposure requirement. The device can be used in portable exposure condition without restriction.

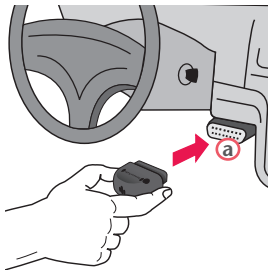
Receiver Plug:

FCC Radiation Exposure Statement:

This equipment complies with FCC radiation exposure limits set forth for an uncontrolled environment. This equipment should be installed and operated with minimum distance 20cm between the radiator & your body.

1. INSTALL THE SENSORSAFE™ RECEIVER.

Locate the 16PIN OBDII port (a) in your vehicle. Refer to your vehicle owner's manual for location. Plug in the SensorSafe™ Receiver.



If unable to locate your vehicle manual, the SensorSafe™ Application may contain information regarding the location of the 16PIN OBDII port for your vehicle

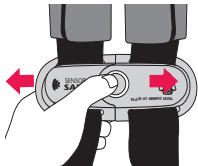
Your SensorSafe™ Receiver will sound one prolonged tone when it first communicates with the vehicle network. In some vehicles this occurs immediately after installing the SensorSafe™ Receiver, in other vehicles the tone will not be heard until the vehicle has been started. This initialization signal only occurs one time after installation.

2. POWER UP THE VEHICLE.

USING SENSORSAFE™ (CONT.)

3. CYCLE THE SENSORSAFE™ CHEST CLIP.

Your SensorSafe™ Chest Clip is designed to “go to sleep” if clipped for more than 12 hours. To reset, or “wake up” the chest clip, unfasten then re-fasten it. When you do this, the blue LED will flash two times. TO PRESERVE BATTERY LIFE, ALWAYS STORE THE SENSORSAFE™ CHEST CLIP IN THE UNCLIPPED POSITION.



4. DRIVE THE VEHICLE.

The SensorSafe™ Receiver is designed to respond after the vehicle has been driven at 5 miles per hour or more.

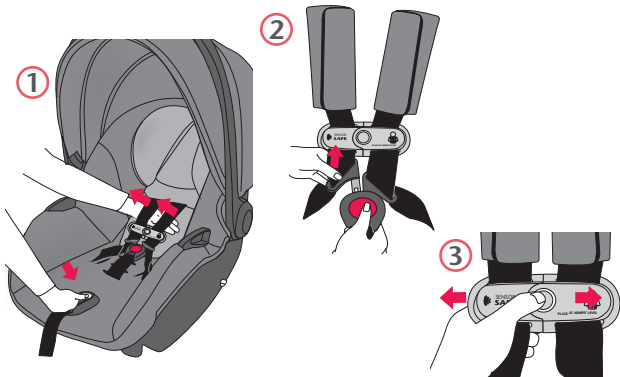
5. PARK THE VEHICLE AND TURN OFF THE IGNITION.

Within 2 seconds of parking your vehicle and turning off the ignition you will hear the SensorSafe™ reminder, alerting you that your baby is in the vehicle. If you don't hear the reminder tone, test your SensorSafe™ by following steps 1-5 again. Contact Evenflo's ParentLink at: 1-800-233-2229 in the (U.S) and (Canada), or online at: www.evenflogold.com or www.evenflogold.ca if the reminder tone again fails to sound.

Note: SensorSafe™ Receiver will also alarm if your child unclips the Chest Clip after the vehicle has been driven at 5 miles per hour or more, but only if the vehicle is on.

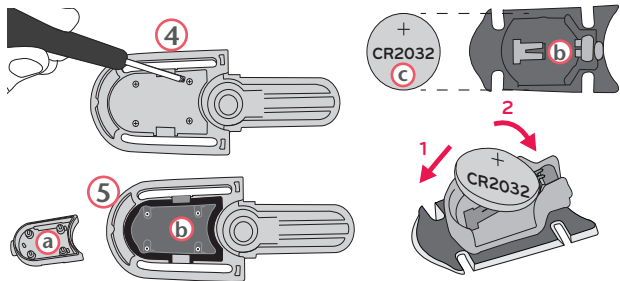
REPLACING THE SENSORSAFE™ CHEST CLIP BATTERY.

1. Loosen Harness by pressing Harness Release Button on the front of the Child Restraint and pulling forward on both Harness Straps.
2. Unbuckle Harness by pressing the button on the Crotch Buckle and pulling out both Buckle Tongues.
3. Open Chest Clip by pressing the Release Button and pulling the Chest Clip apart.



USING SENSORSAFE™ (CONT.)

4. Turn the male side of the Chest Clip over and loosen screws with a small Phillips screwdriver. Remove the cover (a).
 5. Remove Circuit Board (b) from Chest Clip. Remove Battery (c) from Circuit Board. Replace Battery with new Panasonic™ CR2032 Lithium button cell Battery, as shown.
 6. Place the Circuit Board with the new Battery in the Chest Clip. Replace the Cover and tighten the screws.
- This completes the battery replacement process.
- If you have questions, please contact Evenflo's ParentLink at: 1-800-233-2229 in the (U.S) and (Canada), or online at: **www.evenflogold.com** or **www.evenflogold.ca**



Registered trademarks referenced in this manual are the property of their respective owners.



The Federal Aviation Administration (FAA) recommends that you secure your child for air travel in an appropriate child restraint based on your child's weight and size. Turbulence can happen with little or no warning. When turbulence occurs, **the safest place for your child is in a properly installed child restraint, not in an adult's lap or on the aircraft seat with its seat belt.** Keeping your child in a child restraint during the flight will help ensure your family arrives safely at your destination.

The FAA recommends that a child weighing:

- more than 18 kg (40 lbs) use an aircraft seat belt;
- less than 9 kg (20 lbs) use a rear-facing child restraint; and
- from 9 to 18 kg (20 to 40 lbs) use a forward-facing child restraint.

Please note that these FAA recommendations may vary from those applicable to the use of your child restraint in a motor vehicle.



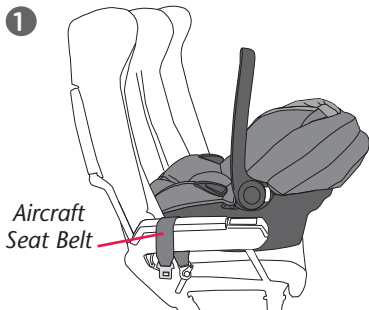
IMPORTANT

You must use the internal harness when installing the child restraint in aircraft.

*Before installing the child restraint, make sure the **aircraft seat is in a fully upright position.***

DO NOT use the convenience base when installing child restraint in aircraft.

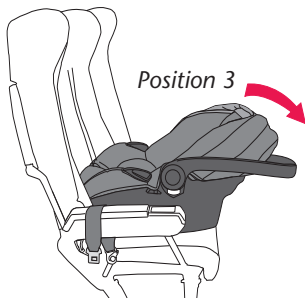
1



Place the child restraint on the aircraft seat **rear-facing**, as shown above.

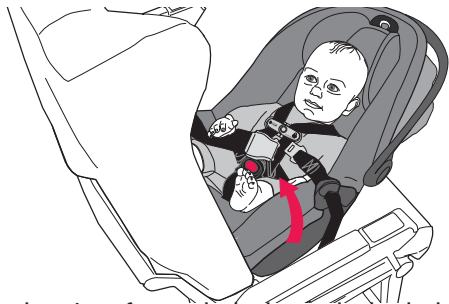


2



Squeeze both handle releases and move the handle to *Position 3*.

3

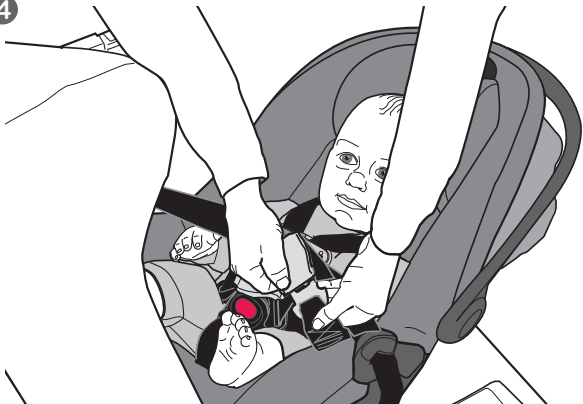


Route the aircraft seat belt through the belt slots on the carrier, as shown above.



Installing Carrier **WITHOUT** Base in Aircraft (cont.)

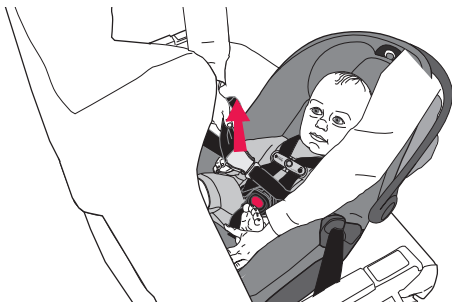
4



Fasten the aircraft seat belt.



5



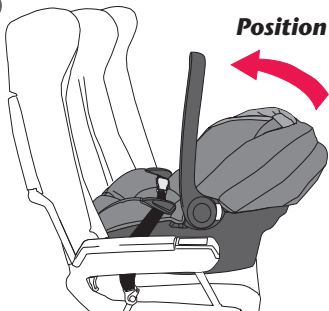
The aircraft seat belt must be as tight as possible. Route the excess seat belt strap back through the belt slots, as shown above. Using your full weight, push the child restraint firmly onto the aircraft seat while pulling on the excess seat belt strap to tighten.

Check your work. Try to move the child restraint in all directions. If you can move the child restraint more than 2.5 cm (1 in.) side-to-side or front to back at the belt path, the aircraft seat belt is not tight enough, and you **MUST** install again until the seat belt is tight.



Installing Carrier **WITHOUT** Base in Aircraft (cont.)

6

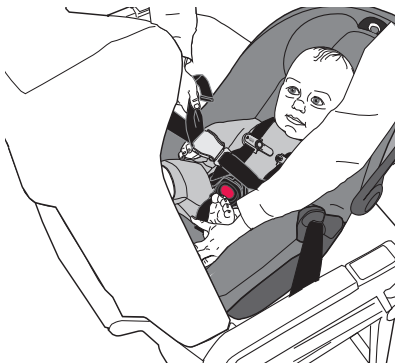


Position 1

Squeeze both handle releases and move the handle to **Position 1**.



7 Unfasten SensorSafe Chest Clip



As a final step, unfasten the chest clip (p. 87). In order to comply with the FAA regulation for Portable Electronic Devices (PED), the SensorSafe Chest Clip **MUST** be unfastened before take-off.

Note: After landing, fasten the SensorSafe Chest Clip before removing the SecureMax Infant Car Seat from the Aircraft seat.

Replacement Parts

Not available on all models. Styles may vary.

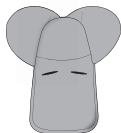
To order replacement parts you can order online at **www.evenflogold.com** or **www.evenflogold.ca** or contact Evenflo. When you contact us, please have the product model number and date of manufacture (found on the back of the child restraint).



Buckle Cover



Infant Pillow



HeadRest Pillow



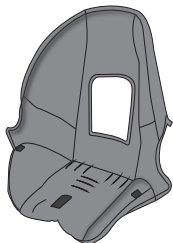
Harness Cover



*SensorSafe
Chest Clip*

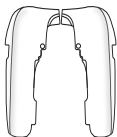


*SensorSafe
Receiver*



Seat pad

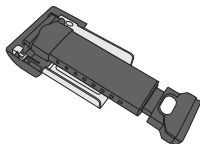
Replacement Parts (cont.)



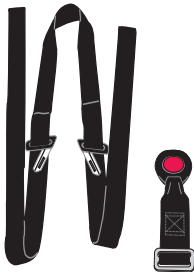
EPS Foam



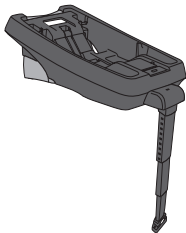
Canopy



SafeZone Load Leg



Harness System



Accessory Base

Care and Cleaning

- **DO NOT** lubricate or immerse in water the LATCH connectors, the buckle, or any other part of this child restraint, unless rinsing is permitted, as stated on the back of the buckle for your restraint.
- Plastic and metal parts may be wiped clean with mild soap and water and dried with a soft cloth. Do not use abrasive cleaners or solvents.
- Take care not to damage any labels.
- The harness can be wiped clean with mild soap and water. Allow harness to air dry.
- Machine wash the seat pad separately in cold water, delicate cycle. Tumble dry 10 to 15 minutes on low heat.
- **NEVER** use child restraint without the seat pad.
- To protect the child restraint from damage caused by weather, rodents, and other elements common to garages, the outdoors, and other storage locations, remove the seat pad and thoroughly clean the restraint and pad prior to storage. Take care to clean in the areas where crumbs and other debris tend to accumulate.

Tip! To help protect the vehicle upholstery, place a towel beneath and behind the child restraint.

! WARNING!

*Make sure both harness straps are installed **completely** on the splitter plate, as shown. After the cleaning. Failure to properly attach the harness straps to the splitter plate may result in a loose harness and serious injury or death to your child.*



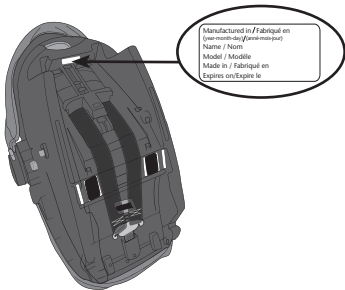
Proper Disposal of this Child Restraint

When this child restraint reaches the expiration date found on the date of manufacture label, Evenflo encourages you to dispose of it properly. Most components of this child restraint are recyclable.

- 1. Remove all fabric and padding.***
- 2. Remove all screws and disassemble the restraint.***
- 3. Recycle all fabric, padding, plastic, foam and metal parts, if accepted by your local recycling center. Responsibly discard the rest.***

If your local recycling center won't accept the padding, you may dispose of it in the landfill.

To prevent injury due to hidden damage, lost instructions, outdated technology, etc., discontinue use of this restraint after the expiration date on the label or if it has been involved in a crash.



Evenflo Gold Lifetime Warranty

Registration in the Evenflo Gold Lifetime Warranty means that for the life of this Gold product, Evenflo warrants to the original purchaser who registers online (“Registrant”) this Gold product against material irregularity. Evenflo’s sole obligation under this warranty shall be, at Evenflo’s option, to repair or replace any Gold product that is determined by Evenflo to be covered by this warranty. Repair or replacement as provided under this warranty is the exclusive remedy of the Registrant. Colors and fabrics change over time. Accordingly, we will replace your product or part with one of equal value. Proof of registration or proof of purchase in the form of a receipted invoice or bill of sale evidencing that the Gold product is eligible for this Gold Lifetime Warranty must be presented to obtain warranty service. This warranty is extended by Evenflo ONLY to the original Registrant and is not assignable or transferable to subsequent purchasers or end users of the Gold product. For warranty service, contact Evenflo’s ParentLink Consumer Resource Center at (800) 233-2229 or

www.evenflogold.com or www.evenflogold.ca.

By simply registering your Evenflo Gold Stroller or Gold Car Seat online within 3 months of purchase, you, the Registrant, will have access to the following Gold Lifetime Warranty benefits:

- **Lifetime Warranty (*Car Seats)** - Through the expiration date of your Gold Car Seat, Evenflo warrants this Gold product to the Registrant against material irregularities.
- **Lifetime Warranty (*Strollers)** - Through the date when your child reaches the maximum weight of your Gold Stroller, Evenflo warrants the Gold Stroller frame to the Registrant against frame damage, including but are not limited to, the breaking of welds and frame tube damage. Soft goods and all other components of your Gold Stroller shall be warranted for one year from the date of purchase.
- **Replacement Parts** - Evenflo will send out free replacement parts based on Gold Lifetime Warranty and subject to the exclusions listed below.
- **Premier Consumer Resource Center located in the USA-for product support, installation and assembly advice.**
- **Live Chat Support**
- **Motor Vehicle Accident Replacement** - Evenflo will replace your Gold Car Seat in the event of a motor vehicle accident.

Warranty (cont.)

***STROLLER WARRANTY INFORMATION:**

Your Evenflo Gold Stroller frame is warranted to be free from any frame damage for the life of the stroller, which is through the date when your child reaches the maximum weight limit of the Gold Stroller, under normal use and according to the instruction manual. Frame damage includes but is not limited to, the breaking of welds and frame tube damage. Soft goods and all other components shall be warranted for one year from the date of purchase.

This warranty is not transferable and extends only to the original purchaser who registered in the Evenflo Gold Lifetime Warranty.

If your Gold Stroller frame is damaged due to the following, the Gold Lifetime Warranty does not apply:

- Misuse or poor maintenance. Please refer to this instruction manual for guidance;
- Corrosion, mold or rust caused by lack of maintenance or service;
- Sun intensity, sweat, detergents, damp storage or frequent washings;
- Incorrect assembly, or installation of third-party parts or accessories not compatible with the Gold Stroller;
- Accident, abuse, neglect, or use on stairs or escalators;
- Commercial use;
- Improper storage;
- Second-hand use; or
- Airline or freight damage.

***GOLD CAR SEAT WARRANTY INFORMATION:**

Your Evenflo Gold Car Seat is warranted to be free from any manufacturing irregularities for the life of the car seat under normal use conditions and according to the instruction manual. The expiration date for your Gold Car Seat is on the date of manufacture label.

This warranty is not transferable and extends only to the original purchaser who registered in the Evenflo Gold Lifetime Warranty.

If your Gold Car Seat is damaged due to the following, the Gold Lifetime Warranty does not apply:

- Misuse or poor maintenance. Please refer to this instruction manual for guidance;
- Sun intensity, sweat, detergents, damp storage or frequent washings;
- Airline or freight damage;
- Improper storage; or
- Second-hand use.

Evenflo reserves the right to make modifications to the terms and conditions of this Lifetime Warranty. Please review the current Lifetime Warranty applicable to your Gold product by accessing the online instruction manuals at **www.evenflogold.com** and **www.evenflogold.ca**.





ParentLink®

answers. advice. affirmation.

www.evenflogold.com or www.evenflogold.ca

USA:, Canada: 1-800-233-2229, 8 AM – 5 PM E.T.