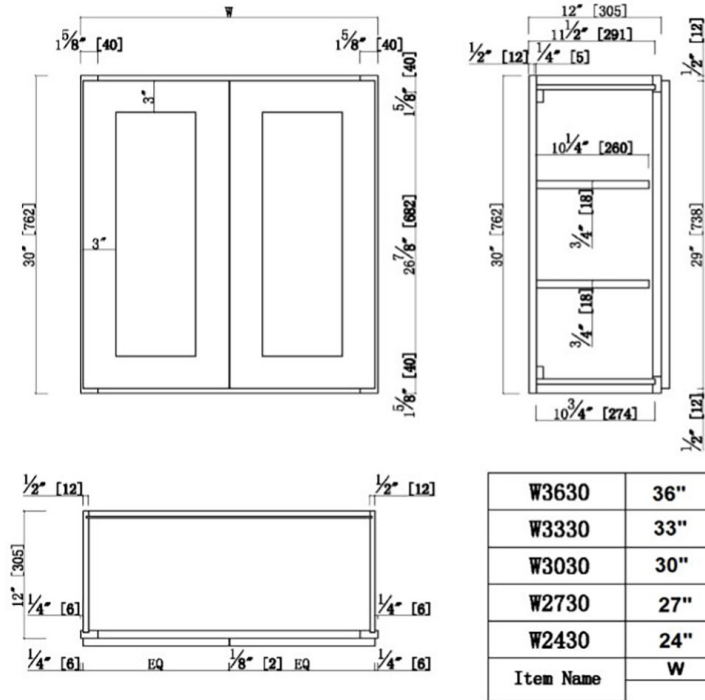


Brookings Fully Assembled Shaker Tall Wall Kitchen Cabinet 36x30x12

Espresso



SPECIFICATIONS

MATERIAL CONSTRUCTION: Wood
WOOD SPECIES: Maple
ASSEMBLED DIMENSIONS: 30" H x 36" L x 12" D
ASSEMBLED WEIGHT: 38 lbs.
KITCHEN CABINET TYPE: Wall
MOUNTING TYPE: Wall Mount
CONSTRUCTION TYPE: Face Frame
HINGE STYLE: Soft Close
DOOR STYLE: 2 Wood shaker doors
NUMBER OF DRAWERS: 0
DRAWER DIMENSIONS 1: N/A
DRAWER DIMENSIONS 2: N/A
DRAWER DIMENSIONS 3: N/A
DWR BOX MATERIAL: N/A
DWR CONSTRUCTION: N/A
DWR GLIDE:
FAKE DWR QTY: 0
FAKE DWR LOCATION: N/A

NUMBER OF SHELVES: 2
SHELF STYLE: Flat
ADJUSTIBLE SHELVES: Yes
SHELF ADJUSTIBILITY INCREMENTS: 2.5"
SHELF DIMENSIONS: 34.5" W x 10.25" D
SHELF THICKNESS: 0.75"
SHELF MATERIAL: Plywood
FACE FRAME MATERIAL: Solid Maple
SIDES MATERIAL: Plywood
BOTTOM MATERIAL: Plywood
BACK PANEL MATERIAL: Plywood
BACK BRACE MATERIAL: Wood
TOE KICK INSET WIDTH: N/A

WARRANTY: 1-Year limited warranty
LEGAL FOR SALE IN CALIFORNIA: Yes
CARB COMPLIANT: CARB Phase 2
TSCA TITLE VI COMPLIANT: Yes



TYPE:
JOB:
ORDER CODE:
APPROVALS: