

NOTES: UNLESS OTHERWISE SPECIFIED  
 1. FOR GENERAL SERIES SPECIFICATIONS, SEE SD36-0000.

2. MATERIAL SPECIFICATIONS:  
 CENTER AND OUTER CONTACTS: COPPER ALLOY  
 SPRING: MUSIC WIRE PER ASTM A228  
 INSULATOR: TEFLON PER ASTM D1710  
 C-RING: SPRING STEEL  
 REAR CONTACT AND ALL OTHER METAL PARTS: BRASS PER ASTM B16.

3. FINISH SPECIFICATIONS:  
 CONTACTS: .000030 MIN GOLD PER ASTM B488 OVER .000080 MIN NICKEL  
 PER AMS-QQ-N-290 (RoHS)  
 BODIES: .000015 MIN GOLD PER ASTM B488 OVER .000080 MIN NICKEL  
 PER AMS-QQ-N-290 (RoHS)  
 ALL OTHER METAL PARTS: .000005 MIN GOLD PER ASTM B488 OVER  
 .000080 MIN NICKEL PER AMS-QQ-N-290 (RoHS)

4. FERRULE AND REAR CONTACT SHIPPED LOOSE.

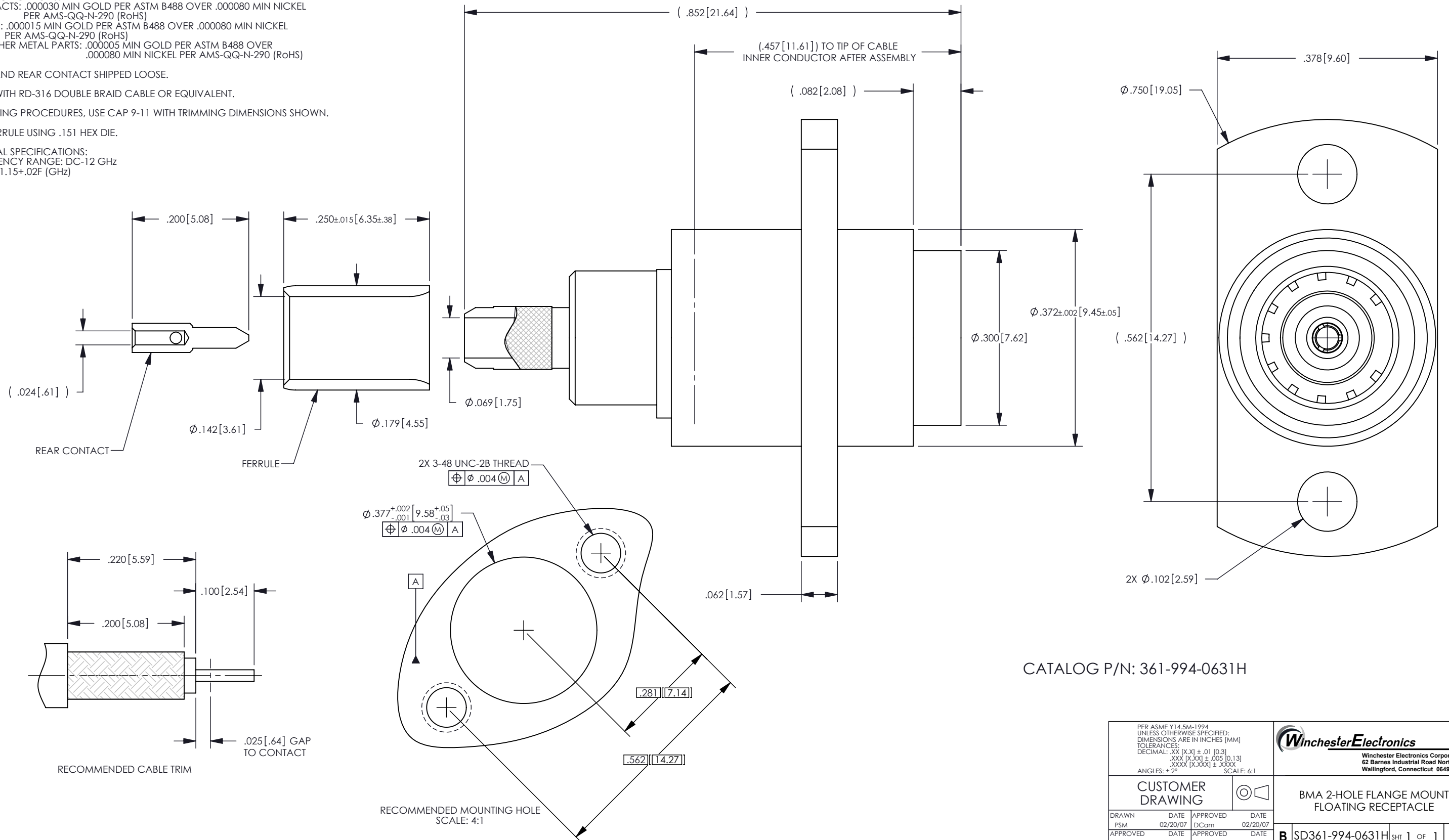
5. FOR USE WITH RD-316 DOUBLE BRAID CABLE OR EQUIVALENT.

6. FOR CABLING PROCEDURES, USE CAP 9-11 WITH TRIMMING DIMENSIONS SHOWN.

7. CRIMP FERRULE USING .151 HEX DIE.

8. ELECTRICAL SPECIFICATIONS:  
 FREQUENCY RANGE: DC-12 GHz  
 VSWR: 1.15+.02F (GHz)

REV	DESCRIPTION	BY DATE	APPD
A	EW07-2516	PSM 02/20/07	WPM



CATALOG P/N: 361-994-0631H

PER ASME Y14.5M-1994 UNLESS OTHERWISE SPECIFIED: DIMENSIONS ARE IN INCHES [MM] TOLERANCES: DECIMAL: .XX [X.X] ± .01 [0.3] .XXX [X.XX] ± .005 [0.13] .XXXX [X.XXX] ± .0005 [0.013] ANGLES: ± 2° SCALE: 6:1				 Winchester Electronics Corporation 62 Barnes Industrial Road North Wallingford, Connecticut 06492	
CUSTOMER DRAWING				BMA 2-HOLE FLANGE MOUNT FLOATING RECEPTACLE	
DRAWN	DATE	APPROVED	DATE	<b>B</b> SD361-994-0631H SHT 1 OF 1	REV A
PSM	02/20/07	Dcam	02/20/07		
APPROVED	DATE	APPROVED	DATE		
WPM	02/20/07	M.AYUB	02/20/07		