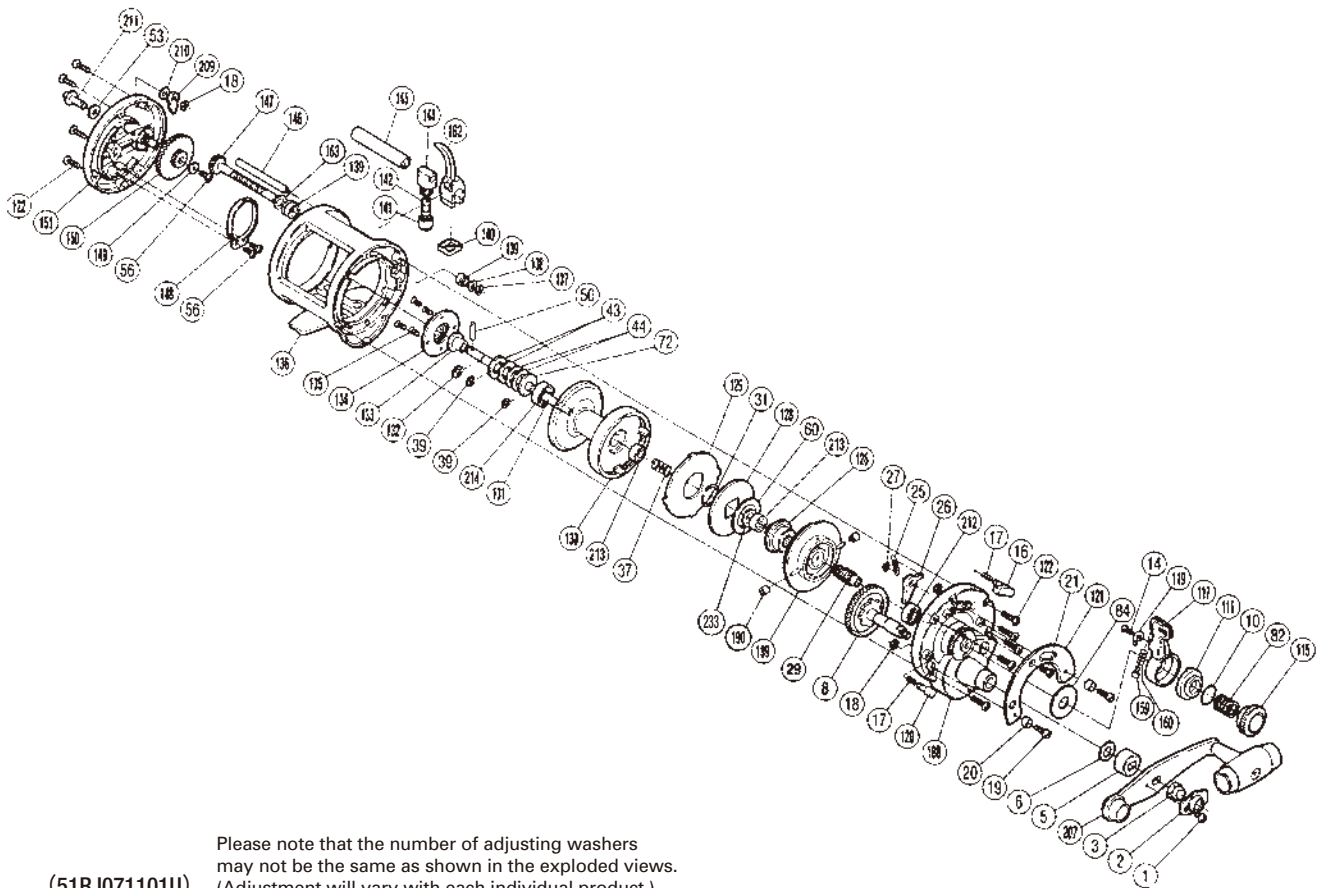


SHIMANO

TR  A-RB

TR-1000LD



Please note that the number of adjusting washers may not be the same as shown in the exploded views. (51RJ071101U) (Adjustment will vary with each individual product.)

TLD No.	PARTS NAMES	TLD No.	PARTS NAMES	TLD No.	PARTS NAMES
0001	Handle Lock Screw	0060	Pre-Load Spring A	0142	Line Guide Pawl
0002	Handle Lock	0072	Pre-Load Washer A	0144	Level Wind Guide
0003	Handle Nut	0082	Dial Spring	0145	Level Wind Guard
0005	Gear Shaft Shield	0084	Lever Thrust Ring	0146	Stabilizer Bar
0006	Gear Shaft Thrust Washer	0115	Pre-Program Dial	0147	Worm Shaft
0008	Main Gear	0116	Lever Shaft Body	0148	Click Spring
0010	Body "O" Seal	0117	Drag Control Lever	0149	Lock Washer
0014	Click Spring Screw	0119	Lever Click Spring	0150	Idle Gear
0016	Strike Stop	0120	Free Spool Detent	0151	Left Side Plate
0017	Pressure Spring	0121	Lever Quadrant	0159	Friction Shoe
0018	"C" Lock	0122	Side Plate Bolt	0160	Friction Shoe Spring
0019	Quadrant Anchor Bolt	0126	Pinion Guard	0162	Line Guide
0020	Bolt Shield	0128	Drag Plate	0163	Worm Shaft Spacer
0021	Quadrant Screw	0129	Titanium Drag Washer	0188	Right Side Plate
0025	Dog Spring	0130	Spool	0189	Cooling Shield
0026	Dog	0131	Main Shaft	0190	Brake Collar
0027	Dog Spring Retainer	0132	"C" Lock	0207	Handle
0029	Pinion Gear	0133	Pre-Load Body	0209	Click Pawl
0031	Seal Lock	0134	Click Gear	0210	Click Pawl Washer
0037	Pressure Release Spring	0135	Click Gear Screw	0211	Click Button
0039	"C" Lock	0136	Frame	0212	Ball Bearing
0043	Pre-Load Washer B	0137	Worm Shaft Retainer	0213	Ball Bearing
0044	Pre-Load Spring B	0138	Worm Shaft Holder Washer	0214	Ball Bearing
0050	Cross Pin B	0139	Worm Bearing	0233	Washer
0053	Click Button Washer A	0140	Line Guide Cover		
0056	Click Spring Screw	0141	Pawl Cap		