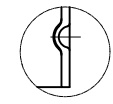
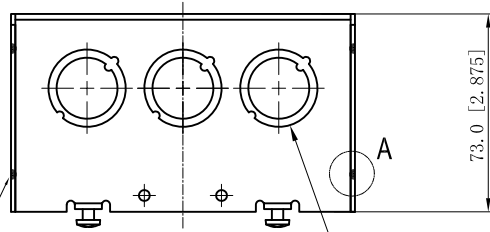
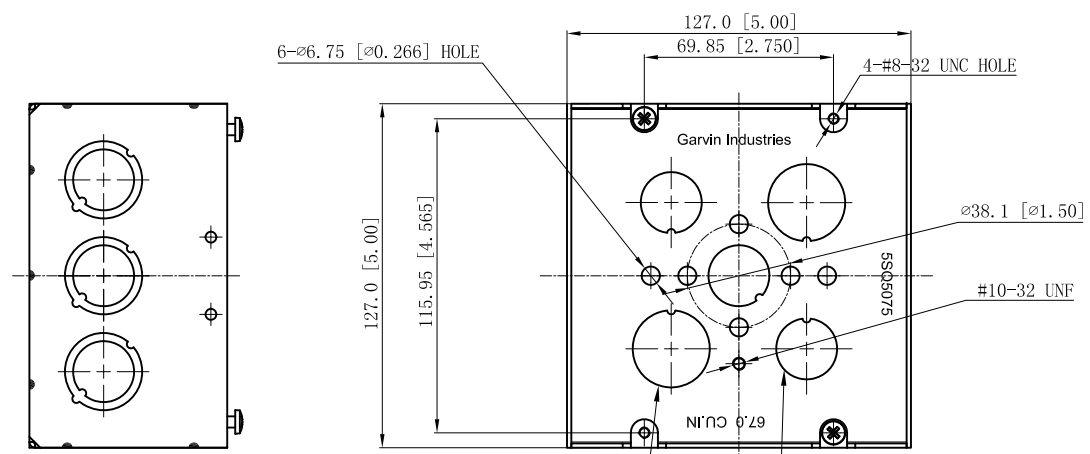


SIDES	BOTTOM
6 1/2"-3/4" KNOCKOUTS	3 1/2" KNOCKOUTS
6 1/2"-3/4" KNOCKOUTS	2 3/4" KNOCKOUTS
2 PCS 8-32X1/2 Screws Installed	
Material:Steel-0.0625"-G60 Galvanized	

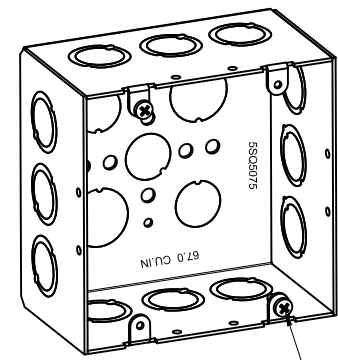
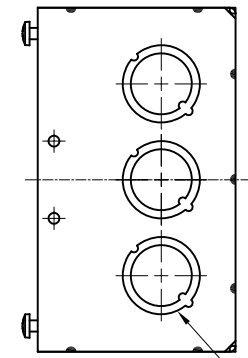


WELDING STYLE DETAIL VIEW A

14 PLACES SPOT WELDING — 6 1/2"-3/4" MOON KNOCKOUTS $\phi=22.50$ [$\phi=0.886$]
 $\phi=28.50$ [$\phi=1.122$]



2 3/4" KNOCKOUTS $\phi=28.5$ [$\phi=1.122$]
 3 1/2" KNOCKOUTS $\phi=22.5$ [$\phi=0.886$]



#8-32, X 2

6 1/2"-3/4" MOON KNOCKOUTS $\phi=22.50$ [$\phi=0.886$]
 $\phi=28.50$ [$\phi=1.122$]

This data sheet is for reference only. GARVIN INDUSTRIES reserves the right to make changes to the design without prior notice.

DESCRIPTION
TRADE REFERENCE TERMS

STANDARD PACKING	GARVIN INDUSTRIES		
PCS	TITLE	5SQ5075	
	SIZE	DWG NO.	REV
A4		5SQ5075	
DATA SHEET			
www.garvinindustries.com			