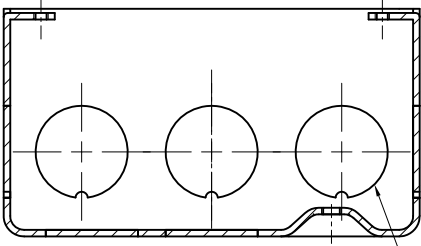
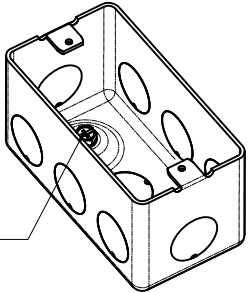


<b>SIDES</b>	<b>BOTTOM</b>
8 1/2" KNOCKOUTS	2 1/2" KNOCKOUTS
	1 Ground Hump
Material: Steel-0.0531~0.059"-Stainless steel 304	
1 pcs #10-32x3/8 screw	

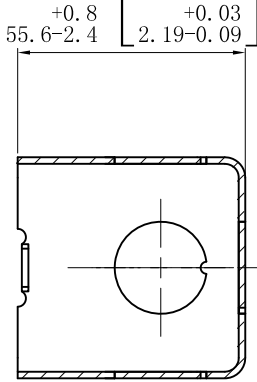


CUTAWAY VIEW C-C

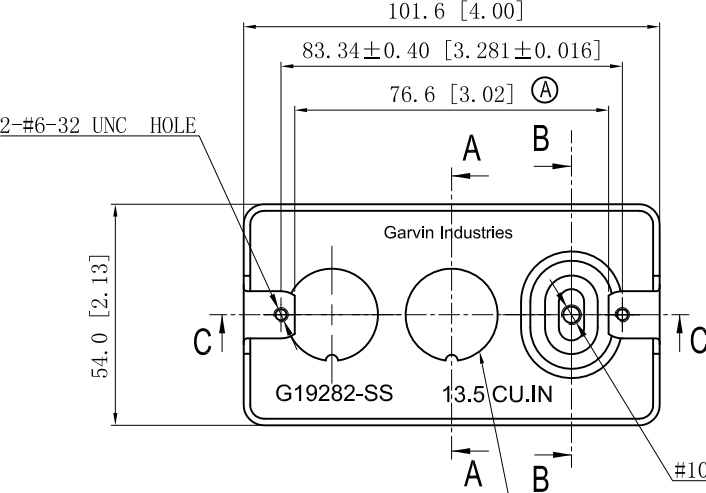
6 1/2" KNOCKOUTS  $\phi=22.50$  [ $\phi=0.886$ ]  
MIRROR



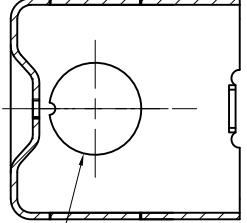
#10-32



CUTAWAY VIEW A-A



2 1/2" KNOCKOUTS  $\phi=22.50$  [ $\phi=0.886$ ]  
MIRROR



CUTAWAY VIEW B-B

2 1/2" KNOCKOUTS  $\phi=22.50$  [ $\phi=0.886$ ]  
MIRROR

DESCRIPTION
TRADE REFERENCE TERMS

This data sheet is for reference only .GARVIN INDUSTRIES reserves the right to make changes to the design without prior notice.

STANDARD PACKING
50 PCS

<b>GARVIN INDUSTRIES</b>		
TITLE HANDY UTILITY BOXES & EXTENSION RINGS		
SIZE A4	DWG NO. G19282-SS	REV A
DATA SHEET		