

OPTIMIZED DIRECT VIEW LED DISPLAY

FHDQ130



Experience stunning, larger-than-life visuals with the 130-inch Optoma FHDQ130 1080p Direct View LED display. Employing a unique packaging process, the all-in-one LED display easily installs in three steps, bringing a beautiful large format display in hours, not days.

Image optimizations ensure every FHDQ130 is ready to impress with richer colors, brighter whites and deeper black levels without a time-consuming calibration process – every display is pre-calibrated. HQUltra 4K image processing technology provides lightning-fast input switching and image scaling that makes all video sources and input resolutions look its best.

Robust connectivity enables compatibility with digital video sources and network control protocols while an integrated media player provides video playback from USB sources. The Optoma Control Q application lets the user take control of the FHDQ130 using mobile devices, wirelessly.

Optimized 130 inch All-in-One QUAD LED Display



WIDE VIEWING ANGLE: Smooth screen surface and 170° wide viewing angle with robust 4-in-1 SMD LED



SIMPLE SETUP: 3-step installation process that takes hours instead of days



OPTIMIZED IMAGE: Stunning out-of-the-box image quality with 1.5mm pixel pitch and pre-calibration



SMARTPHONE CONTROL: Easy control and configuration via Control Q app for mobile devices



QUAD PIXEL TECHNOLOGY: Unique quad pixel design with advanced contrast boosting for darker black levels and brighter whites

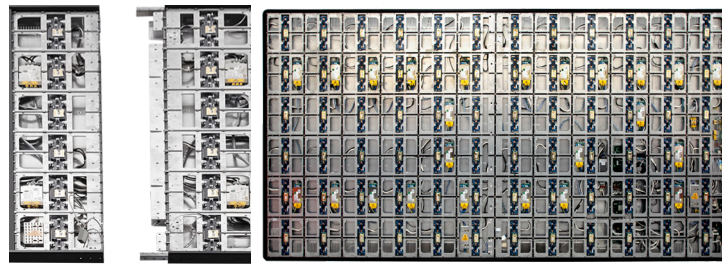


INTEGRATED SCALER: HQUltra 4K image processing technology delivers lightning-fast switching and sharp scaling

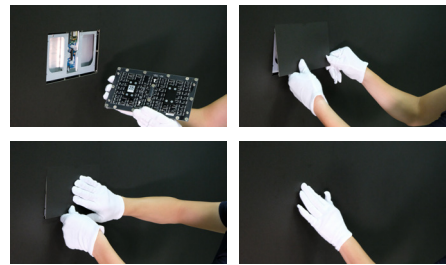
FHDQ130 - OPTIMIZED ALL-IN-ONE DIRECT VIEW LED DISPLAY

3-Step Installation Process - takes hours, not days

1). Assemble panels 2). Mount LED display



3). Attach LED tiles



Easy Mobility



The optional motorized stand places the display on wheels and adds 20-inches of height adjustment at the push of a button, making it ideal for rental and staging scenarios demanding flexibility and mobility.

SPECIFICATIONS

DISPLAY

NATIVE RESOLUTION	1080p Full HD (1920 x 1080)
MAXIMUM INPUT RESOLUTION	4K UHD (3840 x 2160) @ 60Hz
SCREEN SIZE	130" (diagonal), 114.9" x 65.3" (WxH)
MINIMUM VIEWING DISTANCE	4.9'
BRIGHTNESS	600 nits (calibrated)
BRIGHTNESS CONTROL LEVELS	0 to 100% steps
CONTRAST	5,000:1
VIEWING ANGLE	170°/170° (vertical/horizontal)
INGRESS PROTECTION (IP CERTIFICATION)	IP40 (front), IP20 (back)
FRAME COLOR	Black
LED TILES	Front access

COLOR

GREYSCALE PROCESSING DEPTH	16-bit
COLORS	281 trillion
REFRESH RATE	>3000Hz

IMAGE PROCESSING

VIDEO PROCESSOR	Integrated image scaler and switching
SENDER	Integrated sender

LED TILES

PIXEL PITCH (H X V)	1.5 mm
LEDS PER PIXEL	3
PIXEL CONFIGURATION	Quad SMD
LED COLOR (OFF)	Black
LED SIZE	SMD1010
PIXEL RESOLUTION	160 pixels (width) / 90 pixels (height)
PIXELS PER AREA	40,960 pixels/m2

SPECIFICATIONS

CONNECTIVITY

INPUTS	2x HDMI 2.0 (HDCP 2.2), 1x HDBaseT, 1x 3D-SDI, 1x VGA, 1x USB 3.0 (1.5A power, firmware upgrade), 2x USB 2.0 (Wi-Fi adapter, USB storage), 1x USB-B (firmware upgrade), 1x RJ45, 1x RS232, 1x audio out
FILE COMPATIBILITY	.ts .mp4 .avi .mkv .mov .bmp .jpg .png .jpeg
NETWORK CONNECTIVITY	RJ45, Wi-Fi
CONTROL	Optoma Control Q App

PHYSICAL SPECIFICATIONS

WEIGHT	275.6 lbs.
DIMENSIONS (W X H X D)	114" x 65.3" x 2.8"
STORAGE TEMPERATURE RANGE	14°F - 140°F (-10°C - 60°C)
"OPERATING TEMPERATURE (MAX)"	104°F
INPUT VOLTAGE	200-240 VAC
INPUT POWER (MAX)	3,000 watts
POWER (STANDBY)	<0.5 watts
LIFESPAN	>100,000 hrs

Warranty

2 years limited warranty

What's in the Box

FHDQ130, remote, wireless antenna, tile removal tool, 3x spare LED tiles, wall mount, USB Wi-Fi adapter

Optional Accessories

Motorized stand: ODM01MFS
Wi-Fi adapter: WUSB (replacement)

UPC 796435 69 012 0