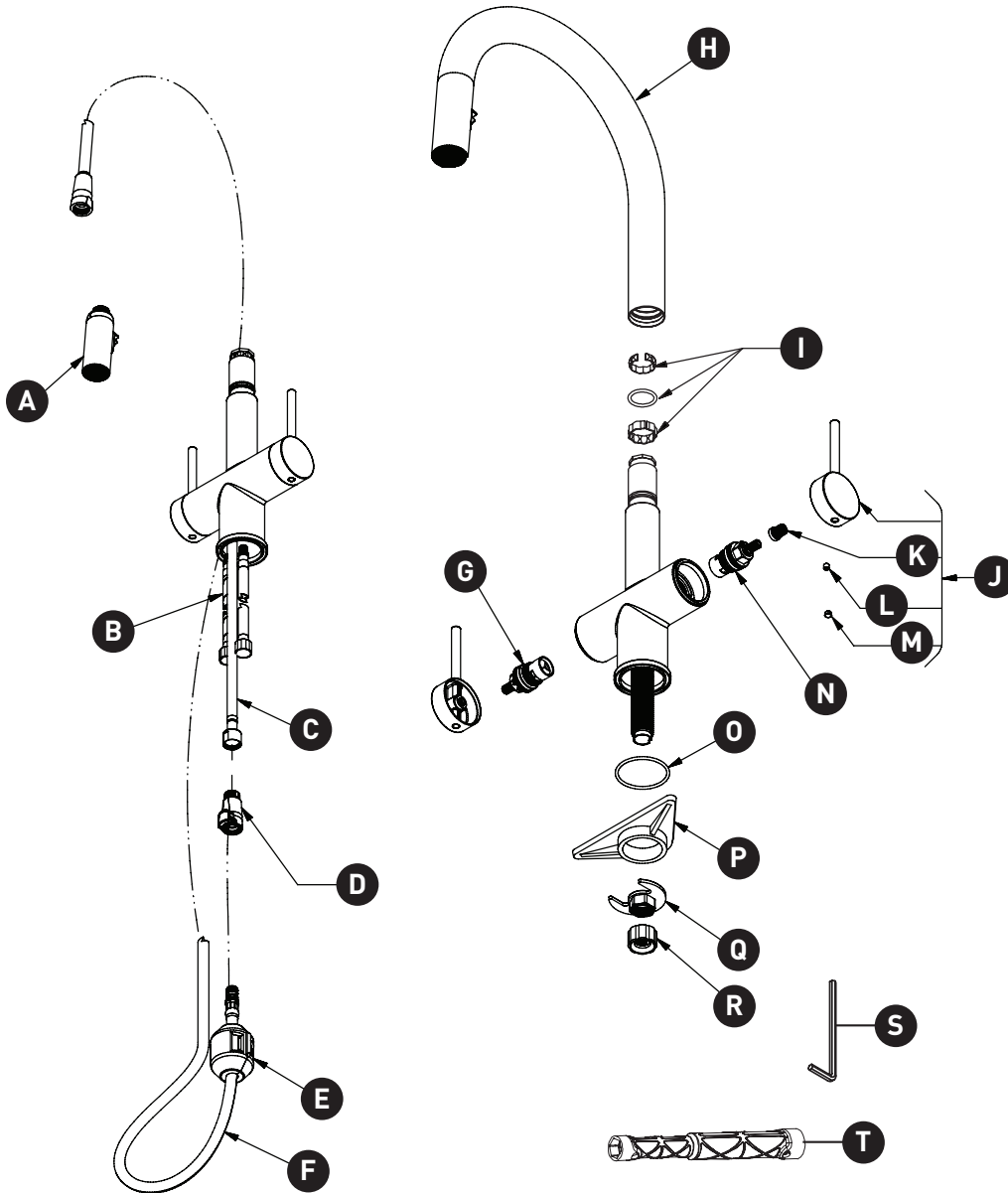


ORDER BY PART NUMBER

ILLUSTRATED PARTS

AZ801

Azure™ Two Handle Pull-Down Kitchen Faucet



ID	Kit Number	Finish
A	4381	N/A
B	7108 (2x)	N/A
C	7128	N/A
D	S7-443-22 [2.2gpm / 8.3l/min]	N/A
	S7-443-15 [1.5gpm / 5.7l/min]	N/A
	S7-443-10 [1.0gpm / 3.8l/min]	N/A
E	9528	N/A
F	7200	N/A
G	401-080 (H)	N/A
H*	3450	See below
I	7489	N/A
J*	1709 (2x)	See below
K	306-266	N/A
L	152-050	N/A
M*	003-030	See below
N	401-079 (C)	N/A
O	225-430	N/A
P	390-085	N/A
Q	7462	N/A
R	330-285	N/A
S	505-025	N/A
T	500-009	N/A

***Finish Determined by Suffix**

Finish	Description
C	Chrome
BK	Black
BG	Brushed Gold
PN	Polished Nickel
SS	Stainless Steel

For warranty or additional information, contact:

U.S.A.
houseofrohl.com/support
1-800-777-9762

QUEBEC / MARITIMES / WESTERN CANADA
QUÉBEC / MARITIMES / OUEST CANADIEN
QUEBEC / MARITIMOS / CANADA OCCIDENTAL
houseofrohl.ca/support
1-866-473-8442

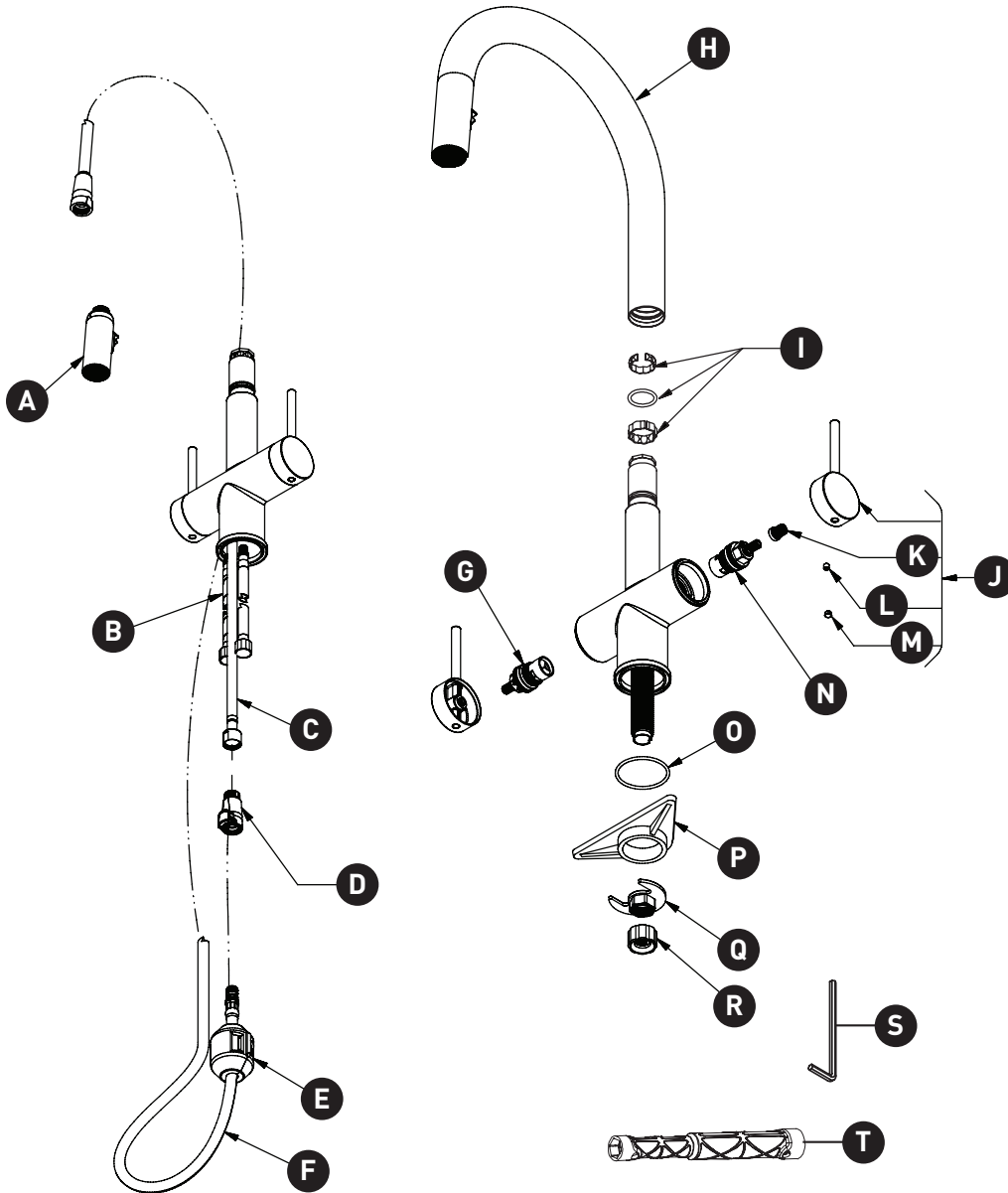
ONTARIO
houseofrohl.ca/support
1-800-287-5354

VEUILLEZ EFFECTUER VOTRE COMMANDE
PAR NO DE RÉFÉRENCE

ILLUSTRATIONS DES PIÈCES

AZ801

Robinet de cuisine avec douchette
Azure™



ID	Référence du kit	Finition
A	4381	N/A
B	7108 (2x)	N/A
C	7128	N/A
D	S7-443-22 (2.2gpm / 8.3l/min)	N/A
	S7-443-15 (1.5gpm / 5.7l/min)	N/A
	S7-443-10 (1.0gpm / 3.8l/min)	N/A
E	9528	N/A
F	7200	N/A
G	401-080 (H)	N/A
H*	3450	Voir ci-dessous
I	7489	N/A
J*	1709 (2x)	Voir ci-dessous
K	306-266	N/A
L	152-050	N/A
M*	003-030	Voir ci-dessous
N	401-079 (C)	N/A
O	225-430	N/A
P	390-085	N/A
Q	7462	N/A
R	330-285	N/A
S	505-025	N/A
T	500-009	N/A

***Finition déterminée par le Suffixe**

Finition	Description
C	Chrome
BK	Noir
BG	Or brossé
PN	Nickel poli
SS	Acier inoxydable

For warranty or additional information, contact:

U.S.A.
houseofrohl.com/support
1-800-777-9762

QUEBEC / MARITIMES / WESTERN CANADA
QUÉBEC / MARITIMES / OUEST CANADIEN
QUEBEC / MARITIMOS / CANADA OCCIDENTAL
houseofrohl.ca/support
1-866-473-8442

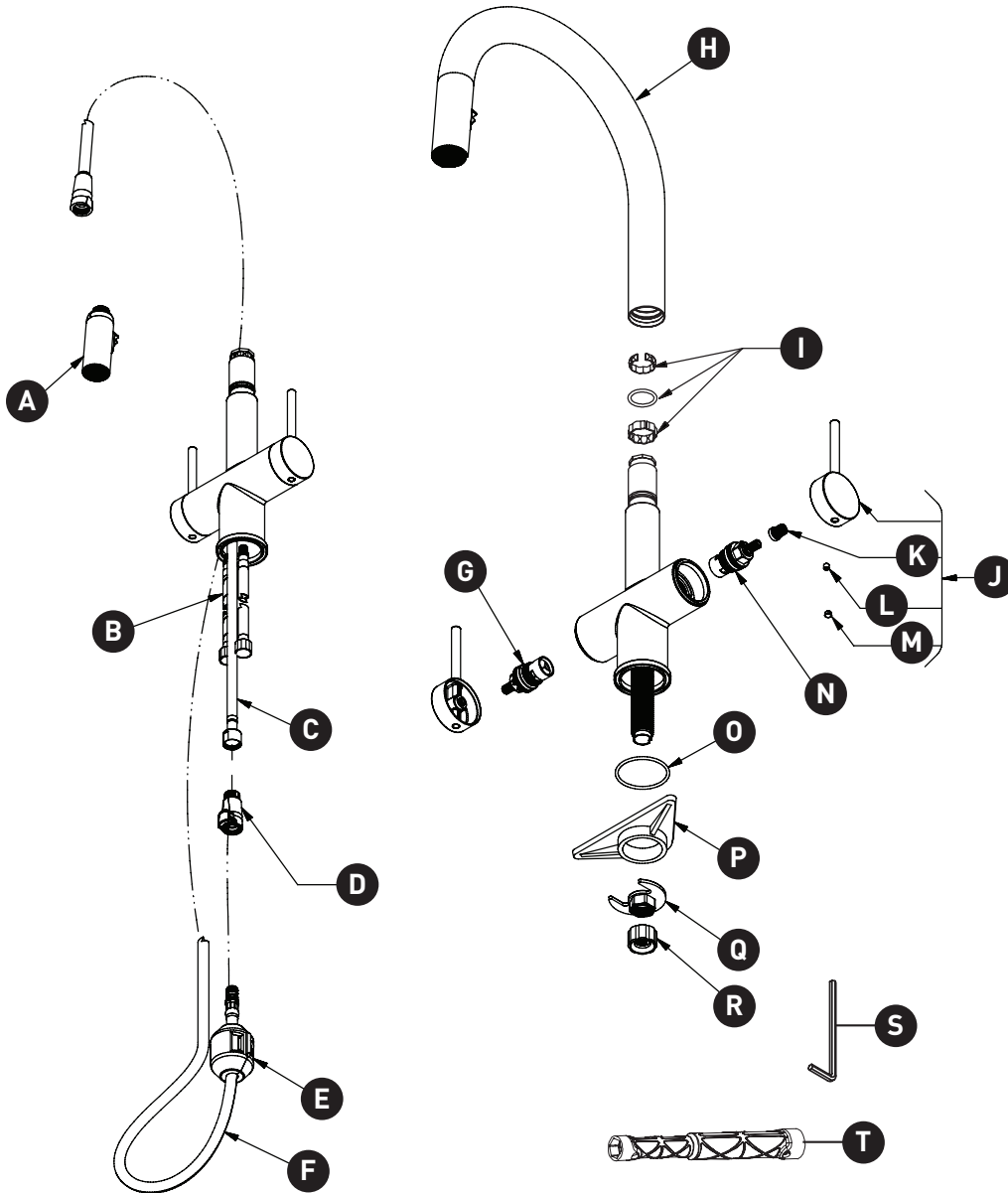
ONTARIO
houseofrohl.ca/support
1-800-287-5354

PEDIR POR NÚMERO DE REFERENCIA

PIEZAS ILUSTRADAS

AZ801

Lave de cocina con rociador Azure™



ID	Referencia del kit	Acabado
A	4381	N/A
B	7108 (2x)	N/A
C	7128	N/A
D	S7-443-22 [2.2gpm / 8.3l/min]	N/A
	S7-443-15 [1.5gpm / 5.7l/min]	N/A
	S7-443-10 [1.0gpm / 3.8l/min]	N/A
E	9528	N/A
F	7200	N/A
G	401-080 (H)	N/A
H*	3450	Ver más abajo
I	7489	N/A
J*	1709 (2x)	Ver más abajo
K	306-266	N/A
L	152-050	N/A
M*	003-030	Ver más abajo
N	401-079 (C)	N/A
O	225-430	N/A
P	390-085	N/A
Q	7462	N/A
R	330-285	N/A
S	505-025	N/A
T	500-009	N/A

***Acabado determinado por el sufijo**

Acabado	Descripción
C	Cromo
BK	Negro
BG	Oro cepillado
PN	Níquel pulido
SS	Acero inoxidable

For warranty or additional information, contact:

U.S.A.
houseofrohl.com/support
1-800-777-9762

QUEBEC / MARITIMES / WESTERN CANADA
QUÉBEC / MARITIMES / OUEST CANADIEN
QUEBEC / MARITIMOS / CANADA OCCIDENTAL
houseofrohl.ca/support
1-866-473-8442

ONTARIO
houseofrohl.ca/support
1-800-287-5354