

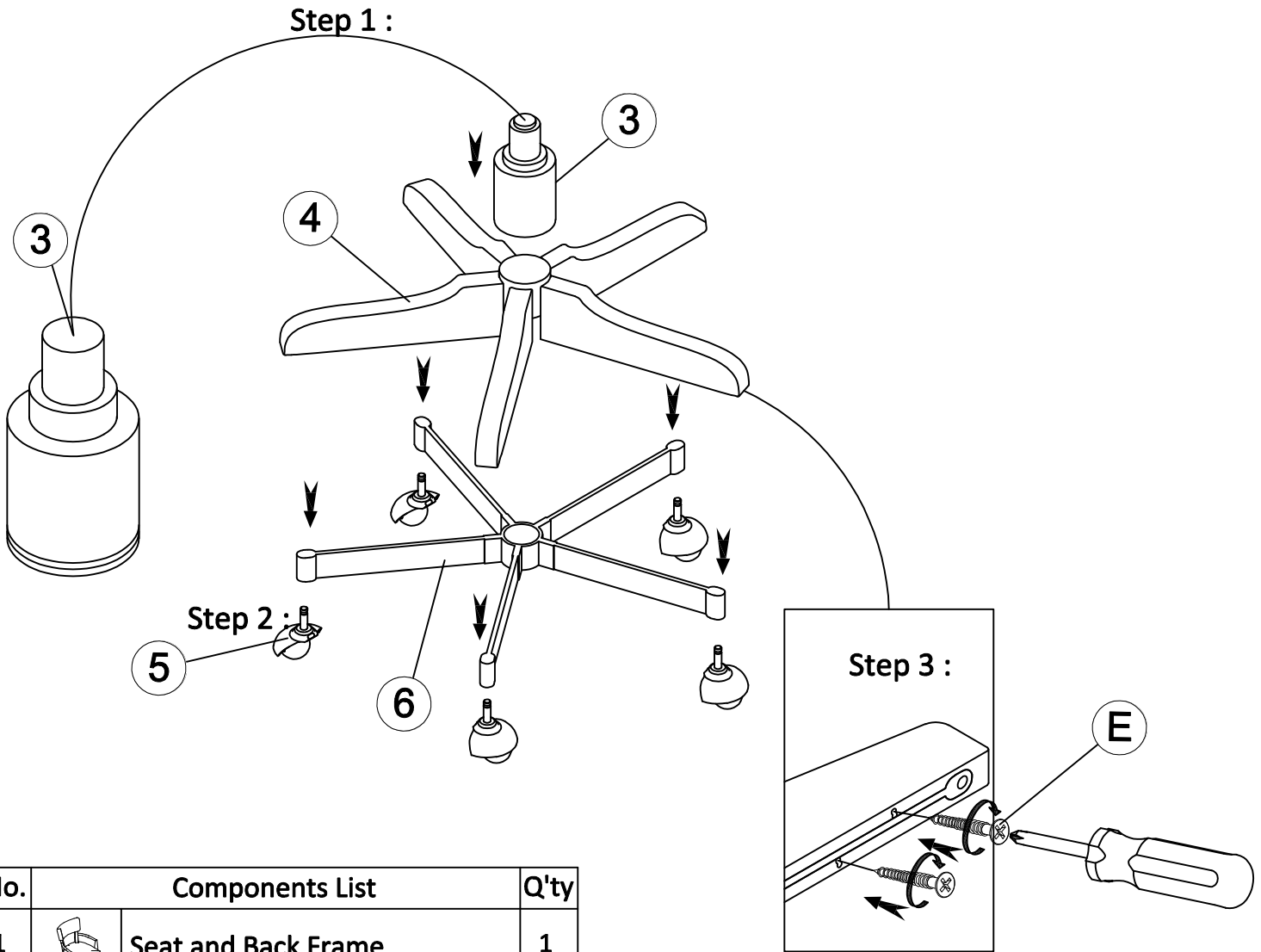
B E R N H A R D T

Assembly Instructions

Touhy Office Chair

Model # : D11-007

Thank you for purchasing Bernhardt furniture . Please check all packing material to ensure proper assembly. Please read all instructions carefully before starting the assembly process . Some parts are large and heavy and require AT LEAST TWO PEOPLE to assemble , in order to prevent possible injury and / or damage to the piece

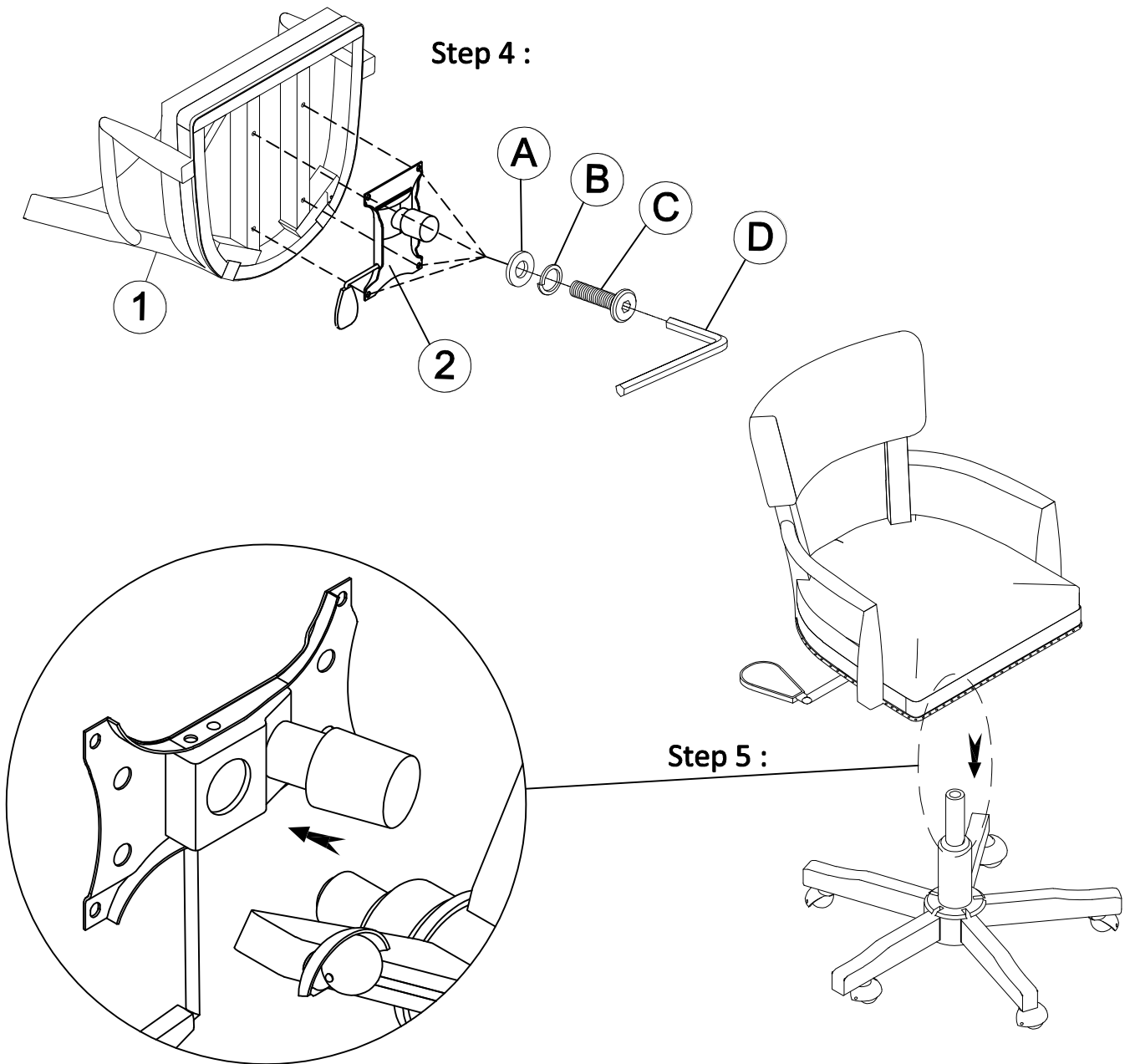


No.	Components List		Q'ty
1		Seat and Back Frame	1
2		Seat Control	1
3		Pneumatic Cylinder	1
4		Wood Base Cap	5
5		Casters	5
6		Wood Base Cap	1

No.	Hardware List		Q'ty
A		Bolt $\varnothing 5/16 \times L1-1/2'' (\varnothing 14)$	4
B		Lock Washer $\varnothing 5/16 \times \varnothing 14 \times 1 \text{mm}$	4
C		Flat Washer $\varnothing 5/16 \times \varnothing 18 \times 2 \text{mm}$	4
D		Allen Wrench 5mm	1
E		$\varnothing 7 \times L5/8''$	10

Cleaning instruction: Wipe surface to be cleaned with damp cotton cloth ; dry immediately with soft dry cotton cloth to remove all moisture .

Thank you for purchasing Bernhardt furniture . Please check all packing material to ensure proper assembly. Please read all instructions carefully before starting the assembly process . Some parts are large and heavy and require AT LEAST TWO PEOPLE to assemble , in order to prevent possible injury and / or damage to the piece



Cleaning instruction: Wipe surface to be cleaned with damp cotton cloth ; dry immediately with soft dry cotton cloth to remove all moisture .