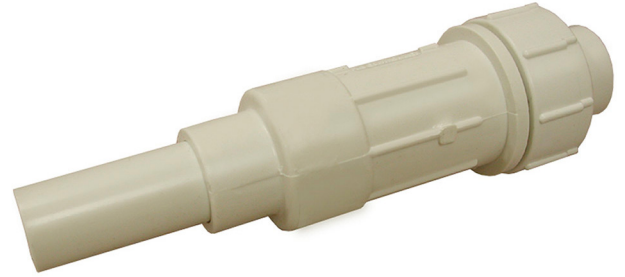


1/2" - 2" PVC Expansion Couplings

Job Name	_____
Location	_____
Engineer	_____
Contractor	_____
Tag	_____ PO# _____

Specifications

- Rated @150 PSI Static Pressure @ 72°F Water Temperature
- Made of PVC type I material
- Patented internal rotational lock of spigot to body
- Easy grip body handle
- IPS HUB x IPS Spigot
- Piston must be extended 1.5" Min.



Applications

- Non-potable Water

Materials

- PVC

Dimensions and Product Offering

Part Code	Size	A	B	C	D	E	F (Min)	F (Max)
E09050	1/2"	1.77"	1.09"	0.84"	0.85"	0.95"	6.50"	8.50"
E09075	3/4"	2.02"	1.31"	1.05"	1.06"	1.01"	7.50"	9.70"
E09100	1"	2.48"	1.64"	1.32"	1.33"	1.12"	8.80"	11.30"
E09125	1-1/4"	2.88"	1.96"	1.66"	1.67"	1.24"	9.80"	12.50"
E09150	1-1/2"	3.14"	2.32"	1.90"	1.91"	1.32"	11.50"	14.60"
E09200	2"	3.62"	2.72"	2.38"	2.39"	1.37"	12.40"	15.50"

