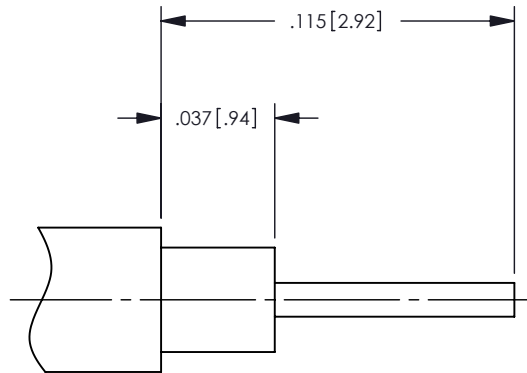
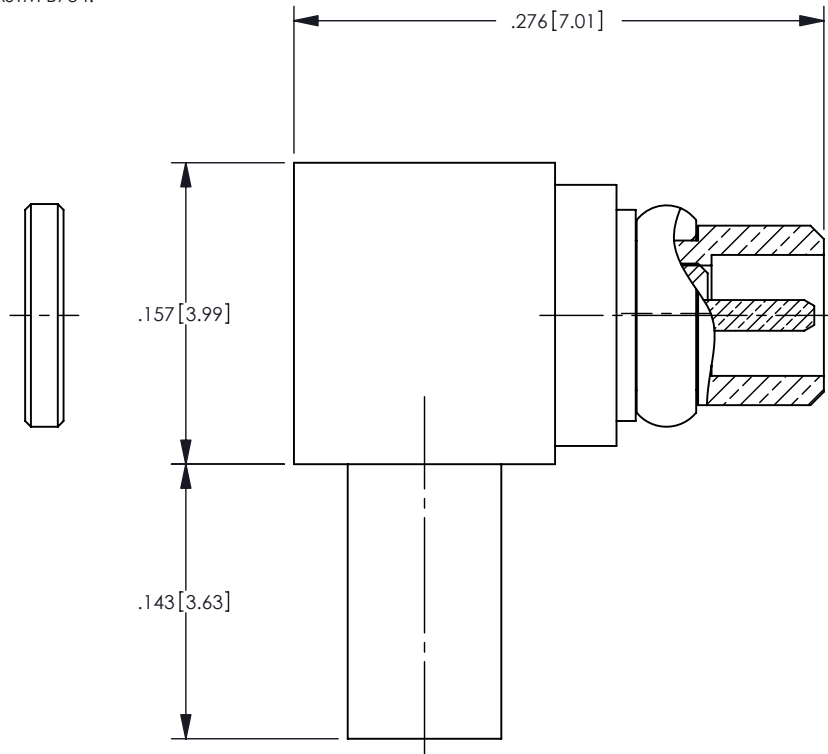


NOTES: UNLESS OTHERWISE SPECIFIED

1. FOR GENERAL SERIES SPECIFICATIONS, SEE SD47-0000.
2. MATERIAL SPECIFICATIONS:
 OUTER CONTACT, BODY, CAP AND CONTACT: COPPER ALLOY
 INSULATOR: TEFLON PER ASTM D1710
3. FINISH SPECIFICATIONS:
 CENTER AND OUTER CONTACTS: .000030 MIN GOLD PER ASTM B488
 OVER .000100 MIN COPPER PER ASTM B734.
 BODY AND CAP: .000015 MIN GOLD PER ASTM B488 OVER .000100 MIN COPPER PER ASTM B734.
4. ELECTRICAL SPECIFICATIONS:
 IMPEDANCE: 50 OHM
 FREQUENCY: DC-6GHz
 VSWR: TBD
 CONTACT RESISTANCE: CENTER - 5 MILLIOHMS, OUTER - 2.5 MILLIOHMS
 NON-MAGNETIC
5. MECHANICAL:
 ENGAGEMENT FORCE: 3.4 LBS MAX.
 DISENGAGEMENT: 1.4 MIN.
 DURABILITY: 500 CYCLES
6. CAP SHIPPED LOOSE.
7. FOR CABLING PROCEDURES, SEE CABLE ASSEMBLY PROCEDURE 5-18
 WITH TRIM DIMENSIONS SHOWN ON THIS SHEET.

REV	DESCRIPTION	BY DATE	APPD
B	ECR-ER3255	PSM 06/22/07	DCam



CABLE TRIM DIMENSIONS
SCALE: 16:1

CATALOG P/N: 470-500-0470J

PER ASME Y14.5M-1994 UNLESS OTHERWISE SPECIFIED: DIMENSIONS ARE IN INCHES [MM] TOLERANCES: DECIMAL: .XX [X.X] ± .01 [0.3] .XXX [X.XX] ± .005 [0.13] .XXXX [X.XXX] ± .XXXX ANGLES: ± 2° SCALE: 10:1				Winchester Electronics Corporation 62 Barnes Industrial Road North Wallingford, Connecticut 06492	
CUSTOMER DRAWING			MMCX RIGHT ANGLE PLUG SOLDER-SOLDER FOR .047 SEMI-RIGID		
DRAWN	DATE	APPROVED	DATE	A SD472-500-0470J SHT 1 OF 1	REV B
PSM	11/03/06	DCam	11/09/06		
APPROVED	DATE	APPROVED	DATE		
M.AYUB	11/09/06	WPM	11/09/06		