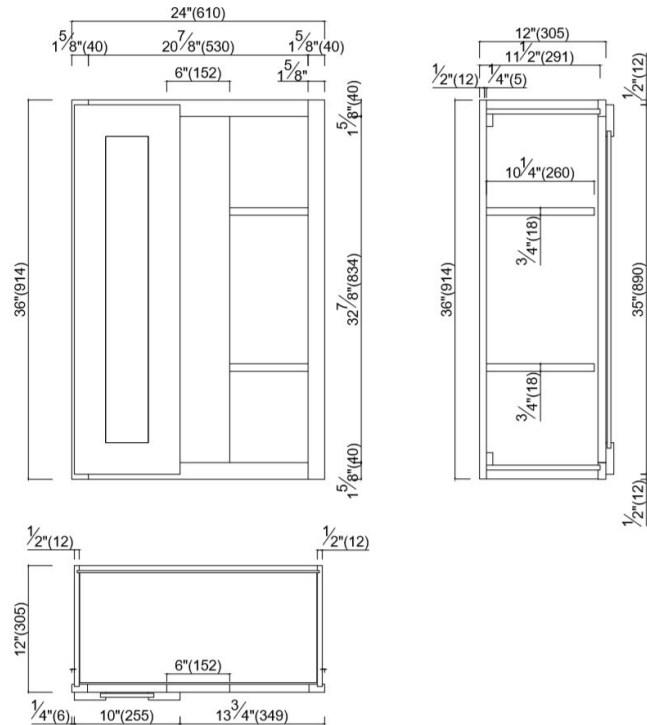


Brookings Fully Assembled Shaker Blind Wall Kitchen Cabinet 24x36x12

Espresso



SPECIFICATIONS

MATERIAL CONSTRUCTION:	Wood
WOOD SPECIES:	Maple
ASSEMBLED DIMENSIONS:	36" H x 24" L x 12" D
ASSEMBLED WEIGHT:	51 lbs.
KITCHEN CABINET TYPE:	Blind Wall
MOUNTING TYPE:	Wall Mount
CONSTRUCTION TYPE:	Face Frame
HINGE STYLE:	Soft Close
DOOR STYLE:	1 Maple shaker door
NUMBER OF DRAWERS:	0
DRAWER DIMENSIONS 1:	N/A
DRAWER DIMENSIONS 2:	N/A
DRAWER DIMENSIONS 3:	N/A
DWR BOX MATERIAL:	N/A
DWR CONSTRUCTION:	N/A
DWR GLIDE:	
FAKE DWR QTY:	0
FAKE DWR LOCATION:	N/A

NUMBER OF SHELVES:	2
SHELF STYLE:	N/A
ADJUSTABLE SHELVES:	N/A
SHELF ADJUSTIBILITY INCREMENTS:	N/A
SHELF DIMENSIONS:	N/A" W x N/A" D
SHELF THICKNESS:	N/A
SHELF MATERIAL:	N/A
FACE FRAME MATERIAL:	Maple
SIDES MATERIAL:	Plywood
BOTTOM MATERIAL:	Plywood
BACK PANEL MATERIAL:	Plywood
BACK BRACE MATERIAL:	Wood
TOE KICK INSET WIDTH:	N/A

WARRANTY:	1-Year limited warranty
LEGAL FOR SALE IN CALIFORNIA:	Yes
CARB COMPLIANT:	CARB Phase 2
TSCA TITLE VI COMPLIANT:	Yes



TYPE:
JOB:
ORDER CODE:
APPROVALS: