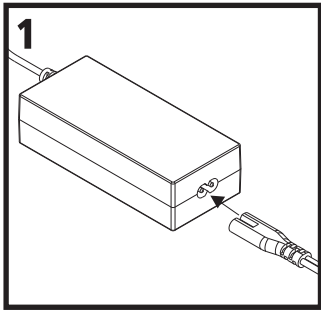


# CXR™ AC ENERGY ACCESSORY INSTALLATION INSTRUCTIONS

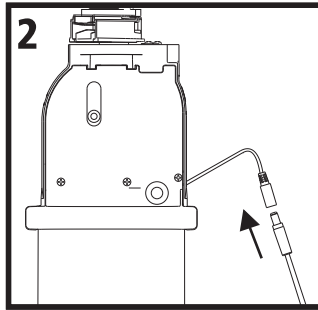
These instructions apply to the PURELL CXR REDIFOAM™ Dispensing Fixture.

**For a hardwired connection, consult a certified electrician to complete the installation.**

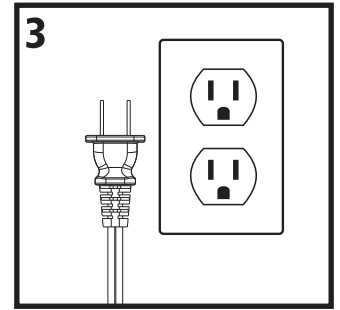
*Please carefully read all instructions before installing.*



Connect the AC outlet cord into the socket on the power adapter.

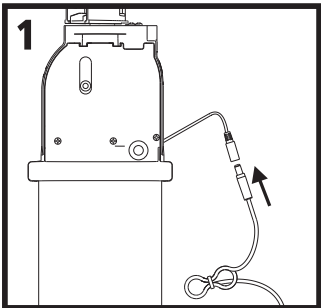


Insert the barrel connector on the power adapter into the corresponding receptacle on the CXR under-counter assembly.

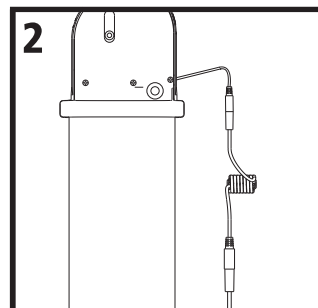


Insert the AC plug into the AC outlet to power the system.

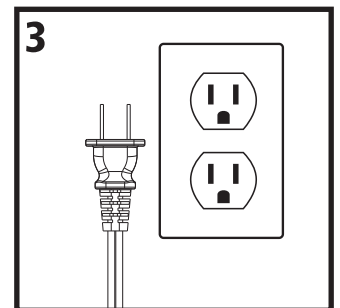
## To extend the reach of the CXR power cable



Insert the barrel connector on the CXR extension cable into the corresponding receptacle on the CXR under-counter assembly.

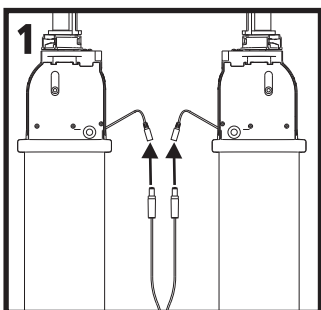


Insert the barrel connector on the power adapter into the corresponding port on the CXR extension cable.



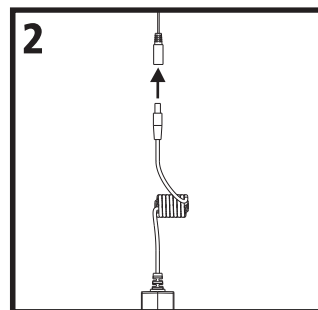
Insert the AC plug into the AC outlet to finish powering the system.

## To connect multiple units via daisy chain:

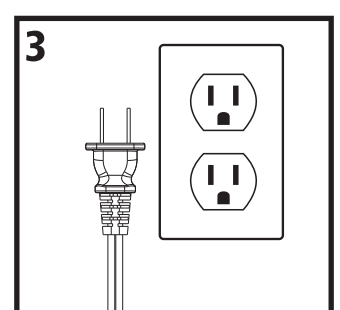


Insert the barrel connectors on the CXR splitting cable into the corresponding receptacles on the separate CXR under-counter assemblies.

**NOTE:** Extension cables can be used to extend the reach of the power adapter or CXR splitting cable.



Insert the barrel connector on the power adapter into the corresponding port on the CXR splitting cable.



Insert the AC plug into the AC outlet to finish powering the system.



GOJO Industries, Inc.  
One GOJO Plaza, Suite 500  
P.O. Box 991 • Akron, OH 44309-0991  
Tel: 1-330-255-6000 • Toll-free: 1-800-321-9647  
Fax: 1-800-FAX-GOJO