

HOOKER[®]

— FURNITURE —

Assembly Instructions

Item Code 7228-80052B-15 Kiara Rectangle Sofa Console

Product Components:

<u>7228-80052B-15</u>	Iron Base	1pc
	Glass Top	1pc
	Bumpons	5pcs
	Glides (Extra pcs)	2pcs



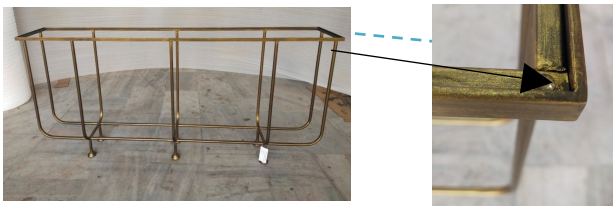
Assembly Instructions:

Step 1 : Firstly put the Bumpons at all top corners of iron base, as per the {DIG.1}

Step 2 : Place the glass on base top as per the {DIG.2}

Step 3 : If needed, you can put glides at bottom of each leg in order to avoid direct contact of legs from flooring.

DIG. 1



DIG. 2



DIG. 3



**** Your item is ready to use now. Enjoy!