



Lion & Baby

item # 31223

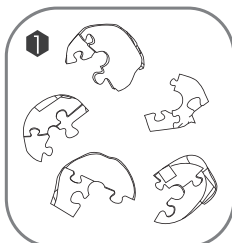
ORIGINAL 3D CRYSTAL PUZZLES™

INSTRUCTIONS

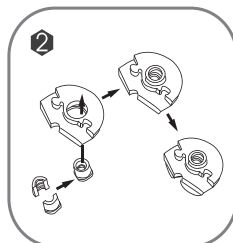
AGES 12+

INSTRUCTIONS

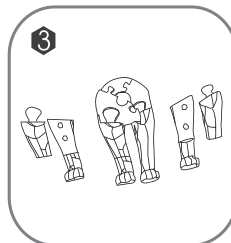
1. Please count and make sure all pieces are present before assembly.
2. The pole pieces are delicate. To prevent damage, do not use excessive force.
3. Assemble crystal puzzle by putting the puzzle pieces together in the order shown below.
4. Missing a piece? Email consumer@ugames.com or call (866)-853-8970 with the missing piece number.



Do not lose any of the puzzle pieces.



Combine 2 small caps into one, insert to the 4th piece, then combine 1st and 4th piece together.



Combine rear legs before insert to the body.



Use the center poles to lock up all pieces tightly with the key enclosed.