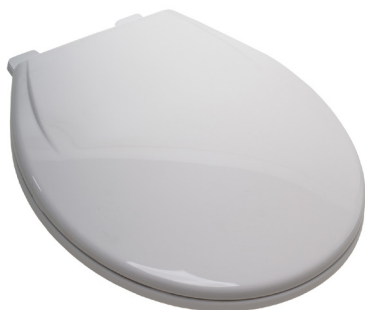


PART NO. C1106S00

SLOW-CLOSE PLASTIC TOILET SEAT, WHITE, ROUND CLOSED FRONT WITH COVER



- Injection molded durable polypropylene plastic with UV protection
- Slow-Close feature
- Adjustable hinges
- Color-matched bumpers
- Corrosion resistant mounting hardware
- Anti-skid rubberized pads
- Top mount design



Adjustable



Slow-Close

Product Specifications

- Category: Residential
- Hinge Design: Slow-Close
- Ring Thickness: 5/8"
- Ring Thickness with Bumper: 7/8"
- Height from Porcelain: 1-3/4"
- Compatibility: ANSI Standard Toilet

Additional Information

- Stainless Steel (Part No. C200HPSS) or Metal (Part No. C200HPM) installation hardware for commercial/ hospitality installations

