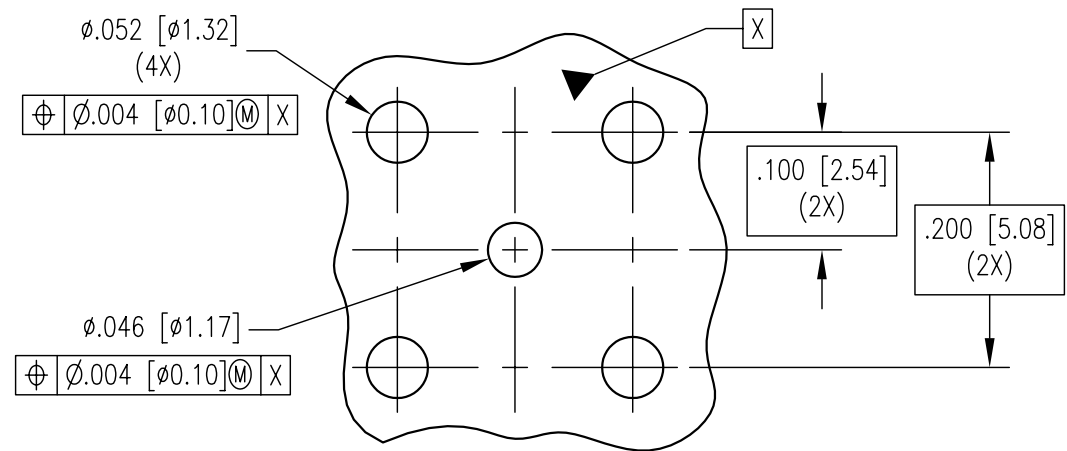
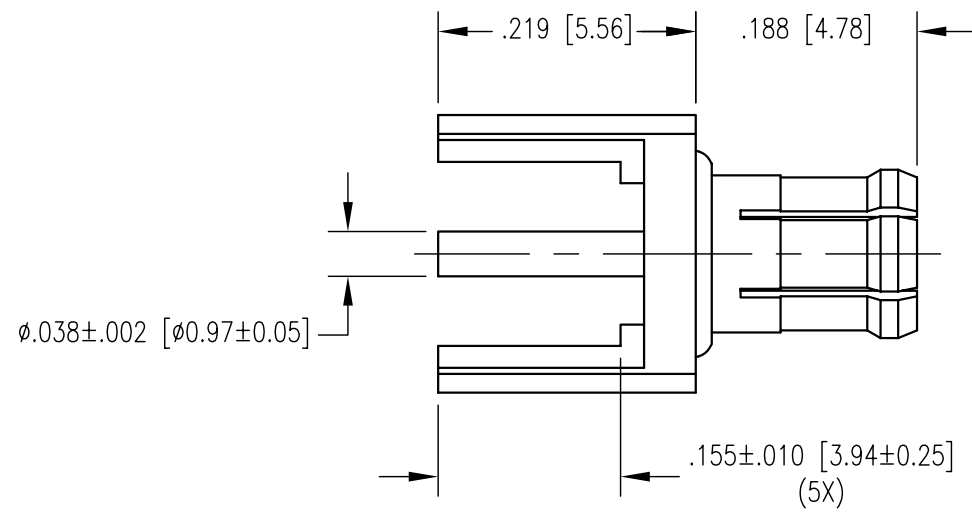
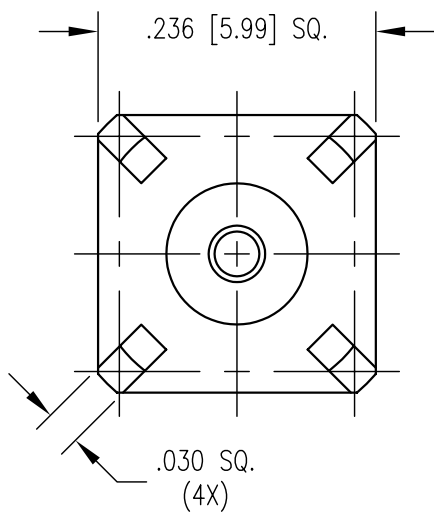


REV	DESCRIPTION	BY	DATE	APPD
A	RELEASED PER ECR 7773	JED	7/15/03	JEM



RECOMMENDED PCB HOLE PATTERN

- NOTES:
- MATERIALS:
 OUTER CONTACT: BERYLLIUM COPPER PER ASTM B196
 BODY AND CENTER CONTACT: BRASS PER ASTM B16
 INSULATOR: TEFLON PER ASTM D1710
 - FINISH:
 BODY AND OUTER CONTACT: .000015 MIN. GOLD PER MIL-G-45204 OVER
 .000050 MIN. GOLD PER MIL-G-45204
 CENTER CONTACT: .000030 MIN. GOLD PER MIL-G-45204 OVER
 .000050 MIN. GOLD PER MIL-G-45204
 - THIS CONNECTOR CONFORMS TO THE REQUIREMENTS LISTED IN CECC 22 220.

PER ASME Y14.5M-1994 UNLESS OTHERWISE SPECIFIED: DIMENSIONS ARE IN INCHES [MM]			
TOLERANCES:			
DECIMALS	.XX ± .01 [0.254]		
	.XXX ± .005 [0.127]		
ANGLES	± 2°	SCALE:	6:1
CUSTOMER DRAWING			
DRAWN	JED	DATE	7/15/03
CHECKED	CWB	DATE	7/15/03
APPROVED	JEM	DATE	7/15/03
APPROVED	MC	DATE	7/15/03

NORTHROP GRUMMAN	
Winchester Electronics	
62 Barnes Industrial Road North Wallingford, CT 06492	
TITLE	
MCX STRAIGHT PCB MOUNT JACK	
A	SD450-060-0046H
SHT.	OF
1	1
REV.	A