

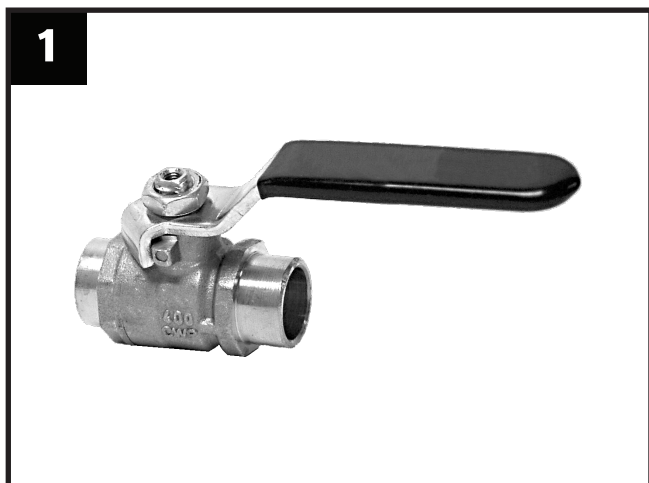


## Snap-on Valve Controller Installation Instructions

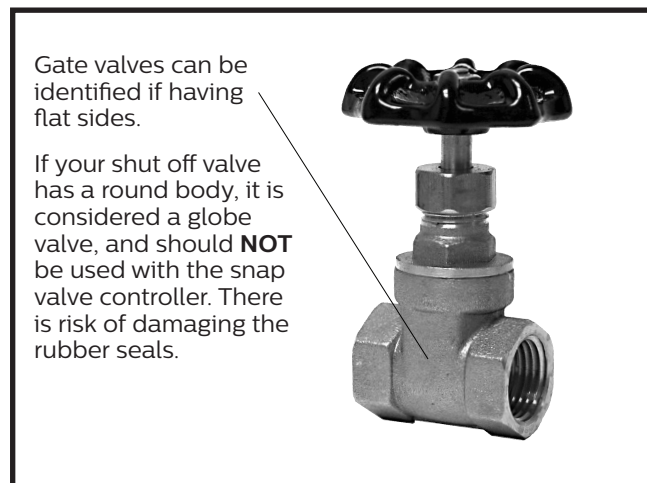
### CAUTION:

- The LeakSmart Snap Valve Controller is designed to be installed on an existing main water shutoff valve.
- To avoid any injury, never place your fingers near the snap valve controller while it is operating.
- This device is **NOT** to be installed on a valve supplying a fire suppression system or fire sprinkler water line.
- Indoor use only

### Ball Valve



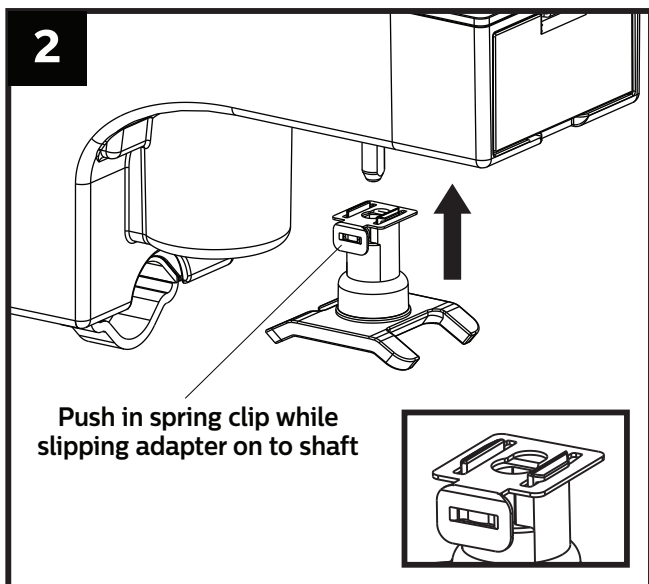
### Gate Valve



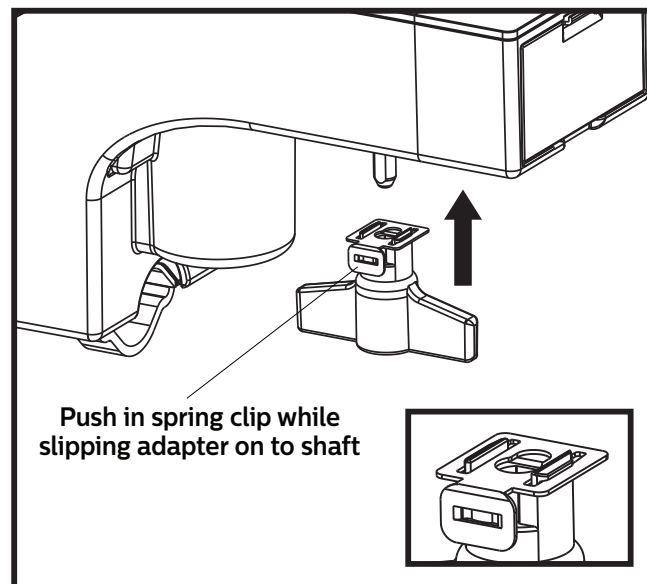
Locate the main incoming water supply valve. Note whether the valve is a ¼ turn ball valve or if it is a multi-turn gate valve having a round handle. Manually turn the valve to its off position and turn on the closest faucet to make sure the flow of water completely stops.

**Note:** If the valve is difficult to turn, requires a tool to operate, or is not completely shutting off the flow of water, we strongly recommend calling a plumber to have the valve replaced.

### Ball Valve



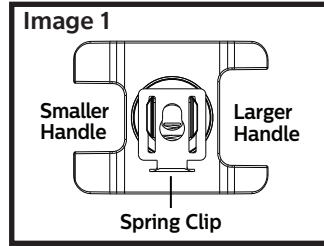
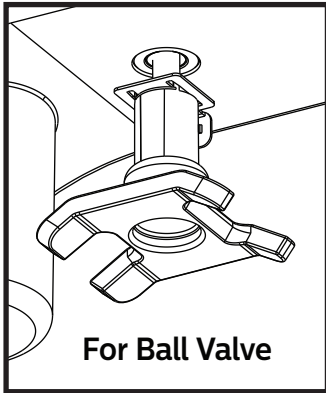
### Gate Valve



Place the correct LeakSmart valve handle adapter on the snap valve controller drive shaft.

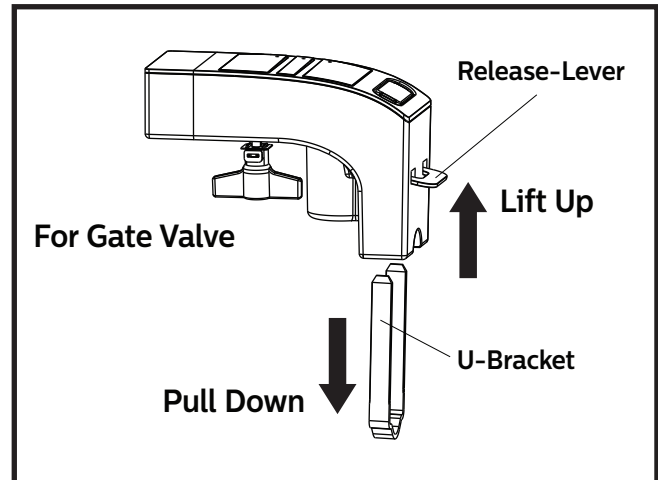
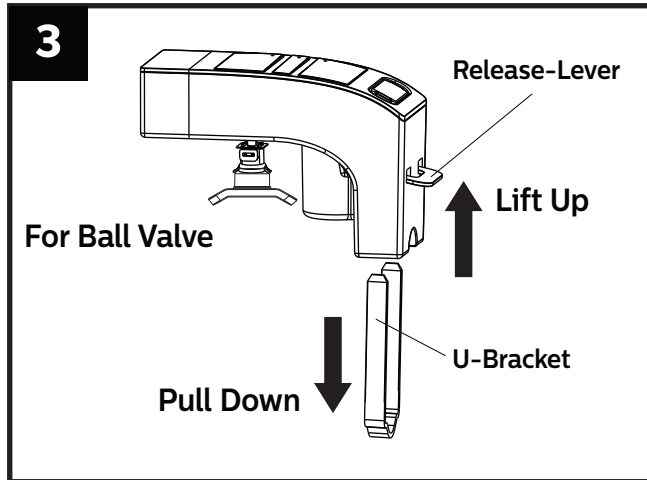
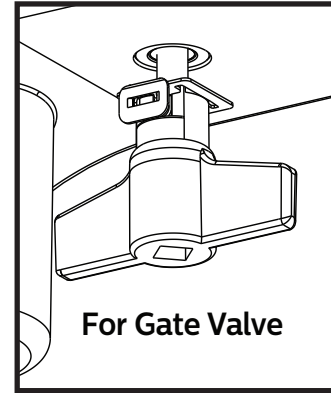
**Note:** Make sure spring clip engages the notch in the shaft. This can be done by pushing up or down on the adapter with slight pressure.

## Ball Valve

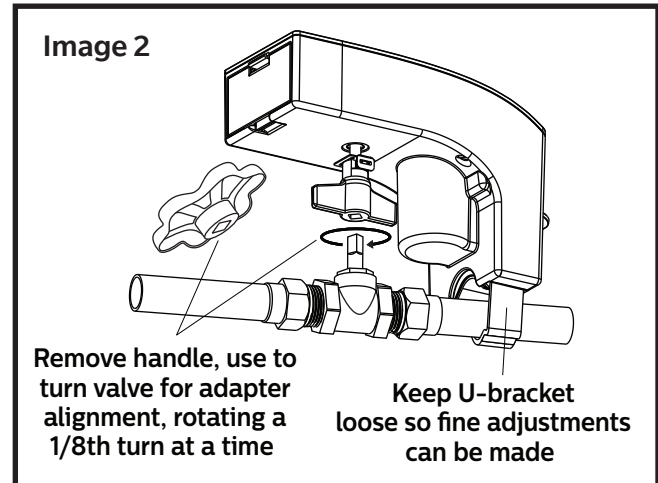
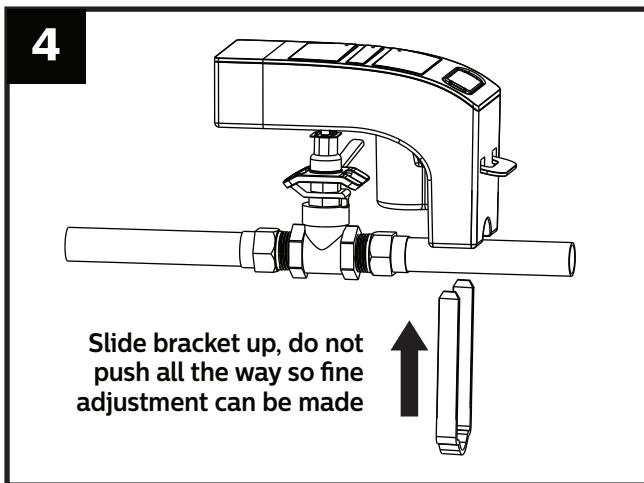


**Note 1:** For ball valve adapter, determine handle size and fit to the corresponding side of the adapter, see image 1.

## Gate Valve



Lift up release lever and remove U-bracket from snap valve controller body.



Place snap valve handle adapter over valve and slip U-bracket from underside of supply pipe and push the slide bracket back into snap controller body.

### For Ball Valve

The shaft alignment of the snap controller is preset to the closed position for the ball valve.

Position the valve lever to the closed position, then fit the handle adapters in to the opening having the closest fit.

### For Gate Valve

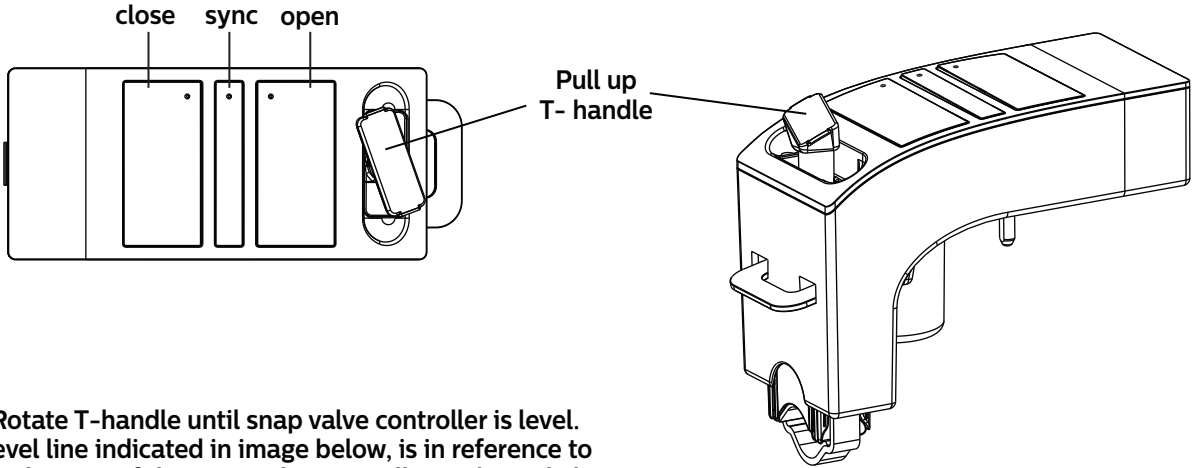
The handle of the gate valve will need to be removed. Once removed, inspect the valve stem to ensure it is configured to the snap adapter's square receiving hole.

**Note:** If your stem is splined or round, this adapter will not work for you.

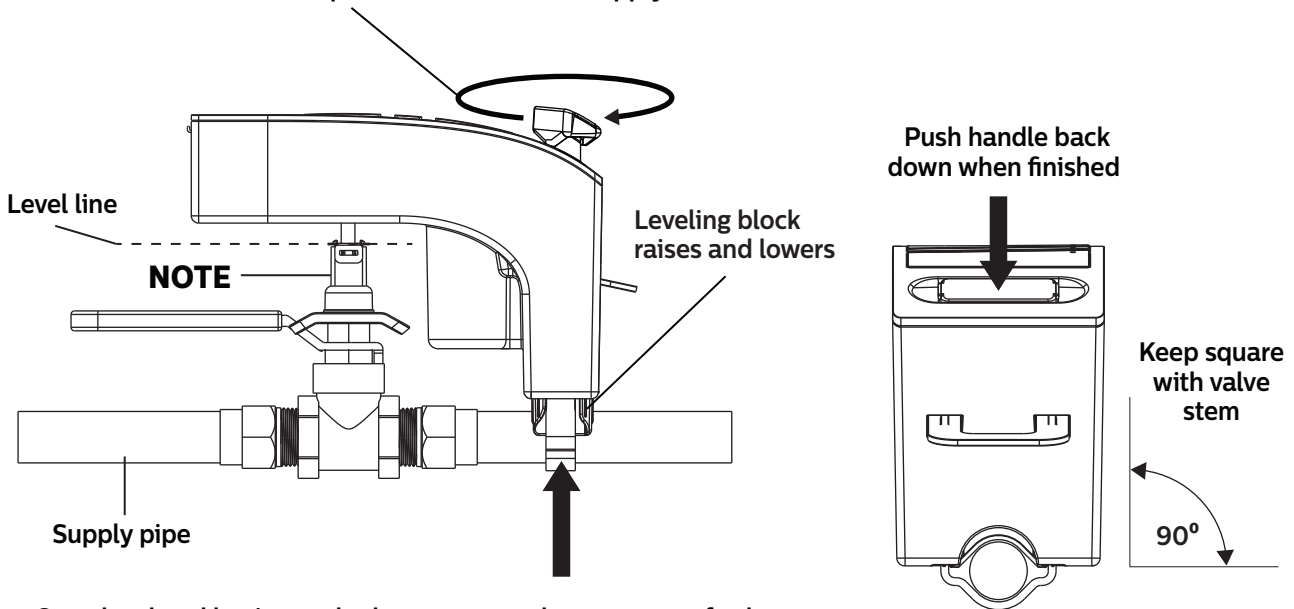
**Step 1:** First close valve all the way. Then, install the snap valve controller over valve aligning the square valve stem with the adapter handle. Insert the U bracket, keeping clearance so fine adjustments can be made. **For fine adjustments see step 5.**

**Note:** If the square does not align, use the original valve handle to rotate the stem a 1/8th turn at a time, going towards the opening position, until the adapter fits onto the square stem, see image 2.

5



Rotate T-handle until snap valve controller is level. Level line indicated in image below, is in reference to the flat bottom of the snap valve controller and supply line.

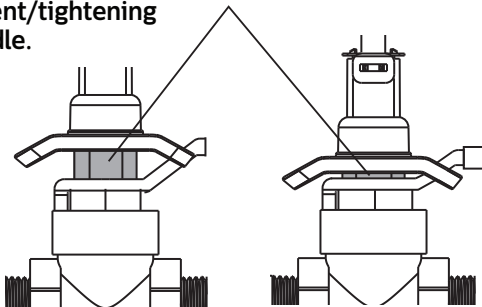


Once level and having tool adapter engaged over center of valve stem (see note below), push the U bracket the rest of the way in. Then continue to hand tighten the handle crank until firmly clamped to the supply pipe. CAUTION: Do not excessively overtighten.

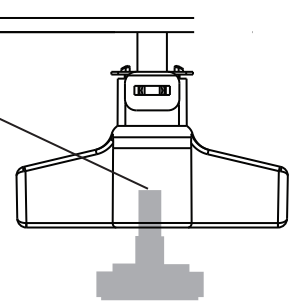
Once the snap controller is roughly in place (**once the valve handle adapter is engaged - see note below**), it is time for **fine adjustment, leveling and squaring**. Use the T-handle to adjust the leveling block, such that the unit is level.

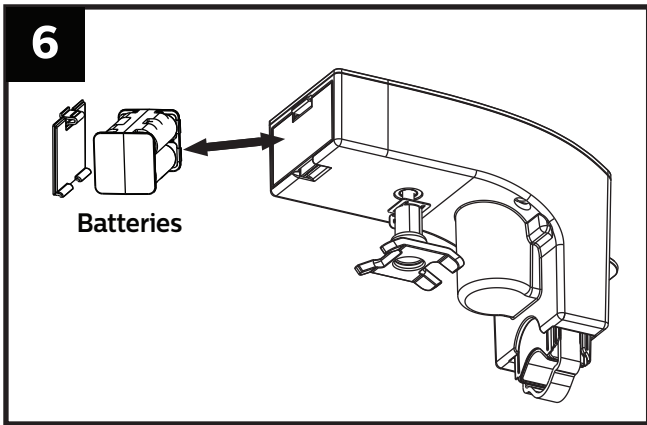
**NOTE:** The shaft is under spring tension and can be pushed up under slight load. When making fine, level adjustment, make sure either the nut is compressed slightly inside the tool of a ball valve or that the square stem is completely engaged and under a slight preload.

Stem nut must be engaged inside the tool, slightly compressing snap valve controller shaft during fine adjustment/tightening of the T-handle.

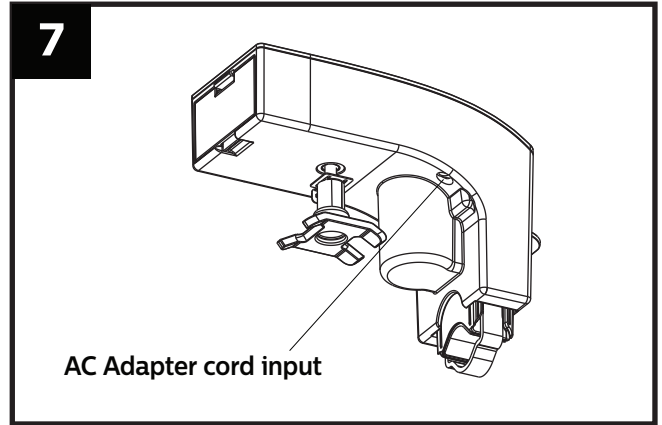


Valve stem must engage inside tool, slightly compressing snap valve controller shaft during fine adjustment/tightening of the T-handle.

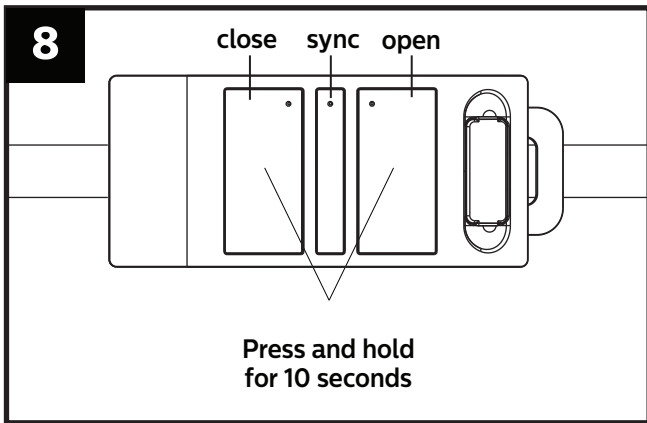




Remove the battery compartment door and install the four(4) AA batteries in the battery holder. **Note:** The snap valve controller will not go into calibration mode (**Step 8**) when running on battery power alone. The AC power cord must be plugged in, **see step 7**.



Plug in AC adapter cord.  
**Note:** Optional 9ft extension cords are available.



Now that your Snap valve controller is **attached** to your valve, it will require a calibration to determine its position and know whether you have a gate or ball valve.  
**To calibrate**, simply press and hold both the open and close buttons on top of the controller for 10 seconds.  
**Then**, let go.

Once you release the buttons, the LEDs turn on **solidly and simultaneously** for a couple seconds. This indicates that the calibration sequence has been initiated.

Let the valve complete its calibration cycle – expect approximately 3 full valve movements, consisting of open/close cycles.

After completion, verify calibration success:

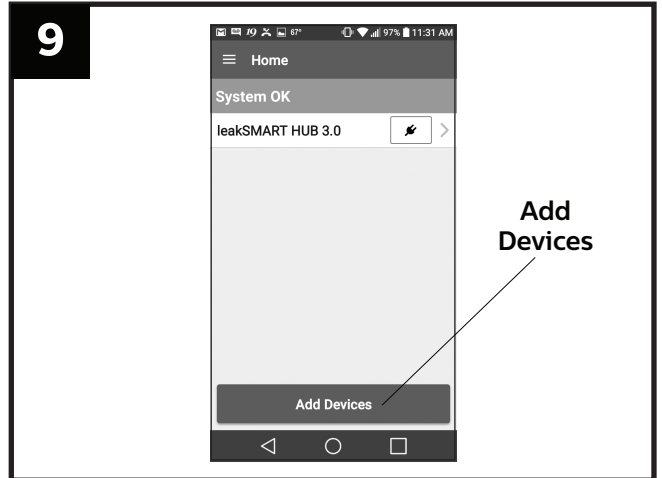
**SUCCESS:** Open and close LEDs flash steadily simultaneously before turning off and staying off.

**FAILED:** Open and close LEDs flash rapidly simultaneously. Then, the open LED stays on as during power up.

**Note:** If you paired your LeakSmart Snap before calibration, you will not be able to open/close your device from the LeakSmart App.

**Warning:** If at any time during calibration that the snap valve controller, while actuating, shifts off the pipes axis, quickly remove all power to stop the motion. Use the quick release to remove snap from the pipe then revisit fine adjustment step 5.

**TO RESET:** To reset the snap valve controller back to factory settings - press and hold the sync button for 15 seconds.



Now you are ready to pair your Snap to your LeakSmart System.

**Note:** If you haven't already activated your LeakSmart Hub, download the LeakSmart App through the Apple App Store or Google Play to begin Hub setup. The Hub must be activated first before other devices can be added. To pair the Snap controller to the LeakSmart hub, follow the in app pairing instructions, when tapping on, Add Devices.

**LeakSmart® Snap FCC Compliance**

FCC: W72-ZICM357SP1, IC:8254A-ZICM357SP2

This equipment has been tested and found to comply with the limits for a Class B digital device, pursuant to part 15 of the FCC Rules. These limits are designed to provide reasonable protection against harmful interference in a residential installation. This equipment generates, uses and can radiate radio frequency energy, and if not installed and used in accordance with the instructions, may cause harmful interference to radio communications. However, there is no guarantee that interference will not occur in a particular installation. If this equipment does cause harmful interference to radio or television reception, which can be determined by turning the equipment off and on, the user is encouraged to try to correct the interference by one or more of the following measures:

- Reorient or relocate the receiving antenna
- Increase the separation between the equipment and the receiver
- Connect the equipment into an outlet on a circuit different from that to which the receiver is connected
- Consult the dealer or an experienced radio/TV technician for help

**LeakSmart**

Bedford Heights, Ohio 44146  
Designed in U.S.A. Made in China.  
©2018 LeakSmart® Inc.

Customer Service: 1-855-532-5768  
Technical Support: 1-855-532-5457  
To learn more visit [leaksmart.com](http://leaksmart.com)

To register your product visit: [LeakSmart.com/product-registration](http://LeakSmart.com/product-registration)