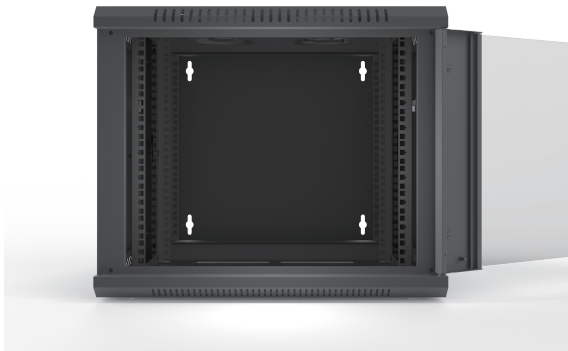


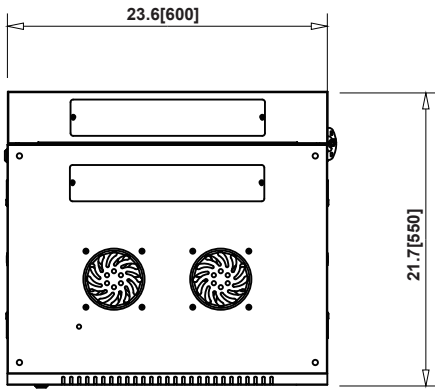
LNWWD



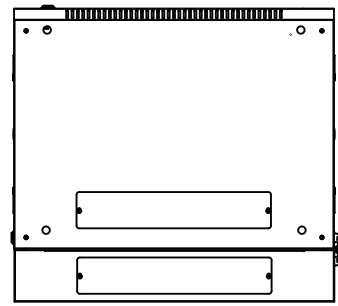
welded wall cabinet with rear swing .size :600*550*12U.
 front door is glass door, 1* fan included.
 Side panel is removable by quick-release lock,
 payload:60KG.Packing with white foam in
 corners and put in outer carton for shipping.



top view



bottom view

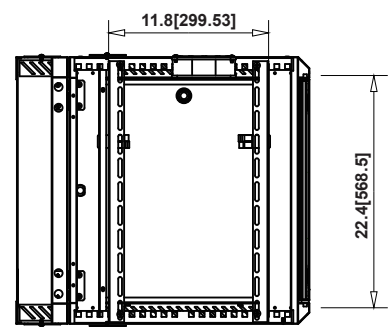
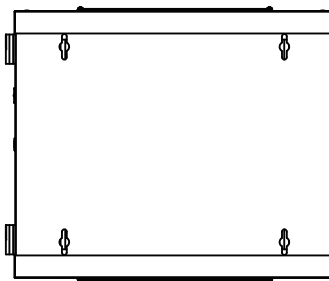
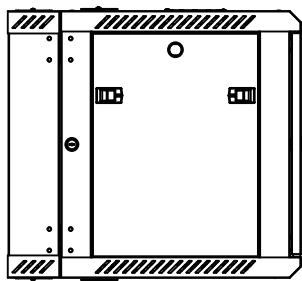
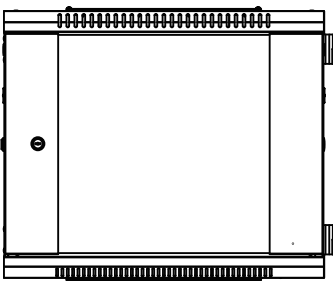


front view

side view

back view

section



Model	Desc
600*550*9U	welded wall cabinet with rear swing . size: 600*550*9U. front door is glass door, 1* fan included. Side panel is removable by quick-release lock, payload:60KG.Packing with white foam in corners and put in outer carton for shipping.
600*550*12U	welded wall cabinet with rear swing . size :600*550*12U. front door is glass door, 1* fan included. Side panel is removable by quick-release lock, payload:60KG.Packing with white foam in corners and put in outer carton for shipping.
600*550*15U	welded wall cabinet with rear swing . size :600*550*15U。 front door is glass door, 1* fan included. Side panel is removable by quick-release lock, payload:60KG.Packing with white foam in corners and put in outer carton for shipping.