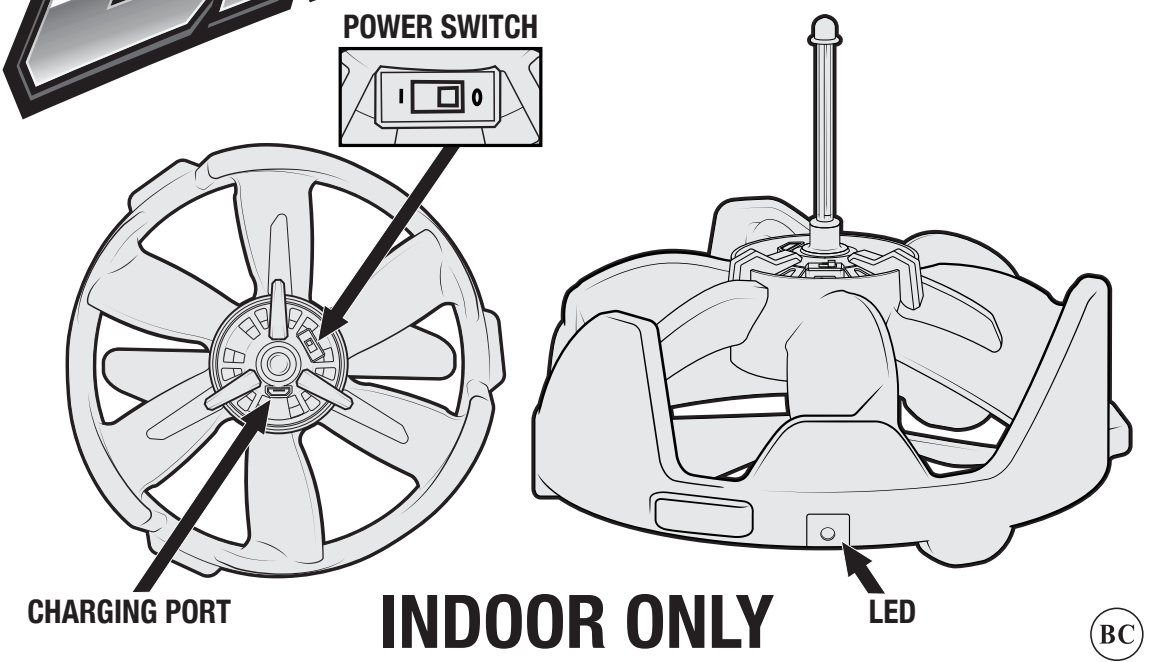


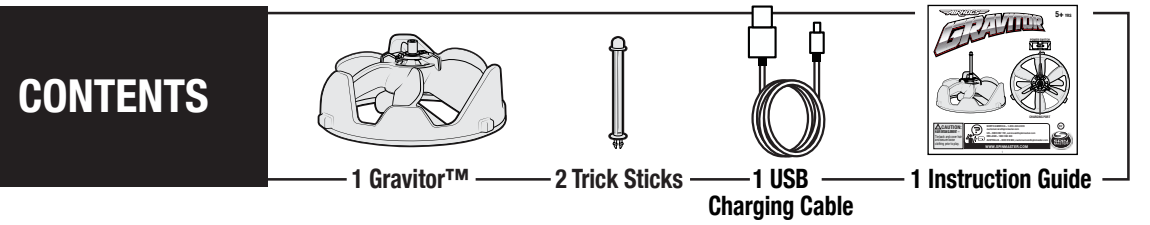
# AIRHOGS GRAVITOR

4+ YRS



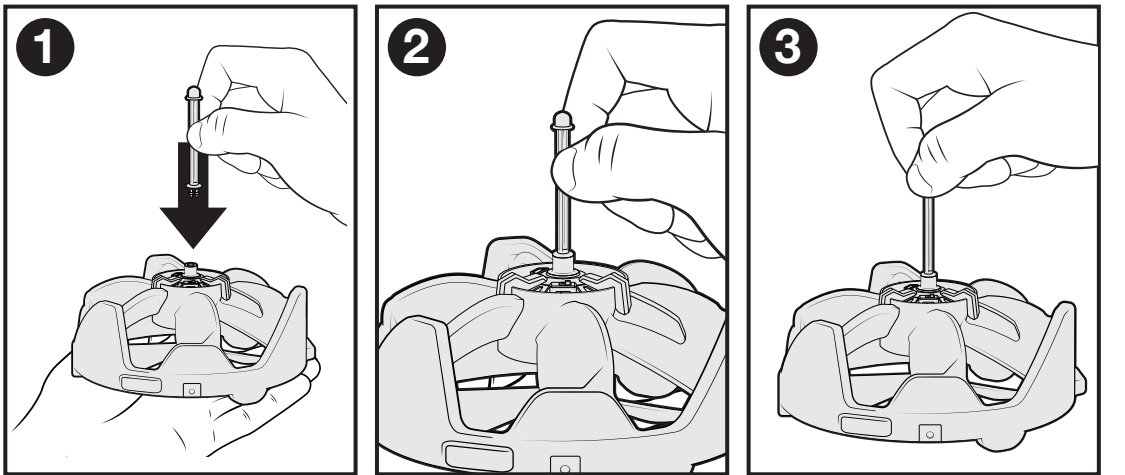
**CAUTION:**  
HAIR ENTANGLEMENT –  
Tie back and cover hair  
and secure loose  
clothing prior to play.

For in-depth video instructions go to  
**AIRHOGS.COM/GRAVITOR**



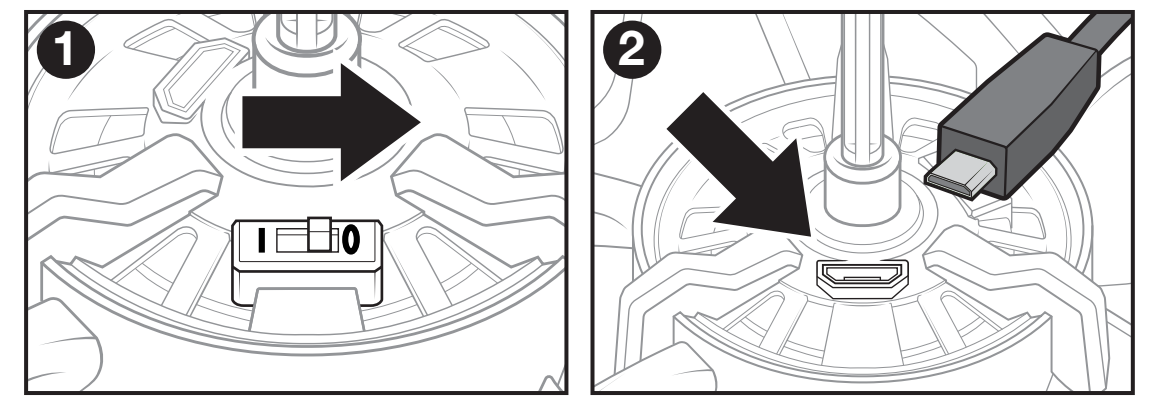
## HOW TO GET STARTED

**Note: The trick stick MUST be attached to the Gravitor for proper function.**

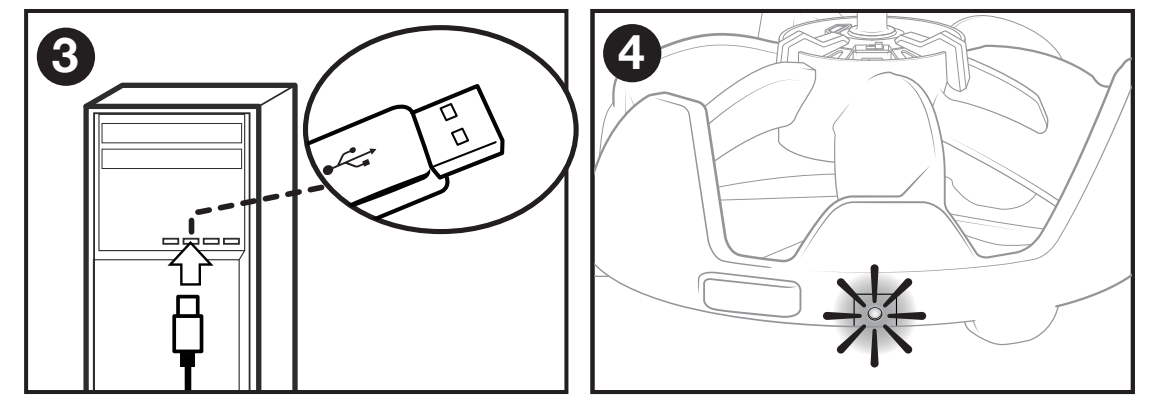


1. Hold the GRAVITOR™ steadily in one hand and the trick stick in the other.
1. Insert the trick stick into the top of the GRAVITOR™ gently, but firmly.
3. You should now be able to pick up your GRAVITOR™ by the trick stick.

## HOW TO CHARGE

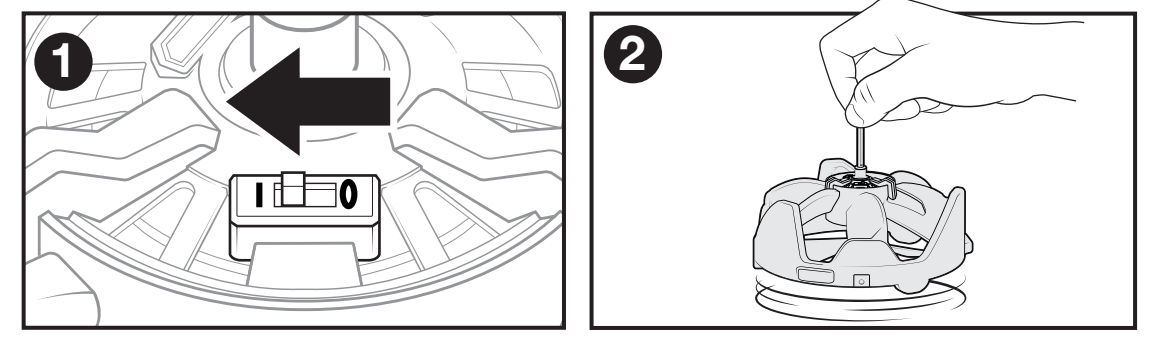


1. Turn the GRAVITOR™ OFF.
2. Plug the small end of the charging cable into the charging port.

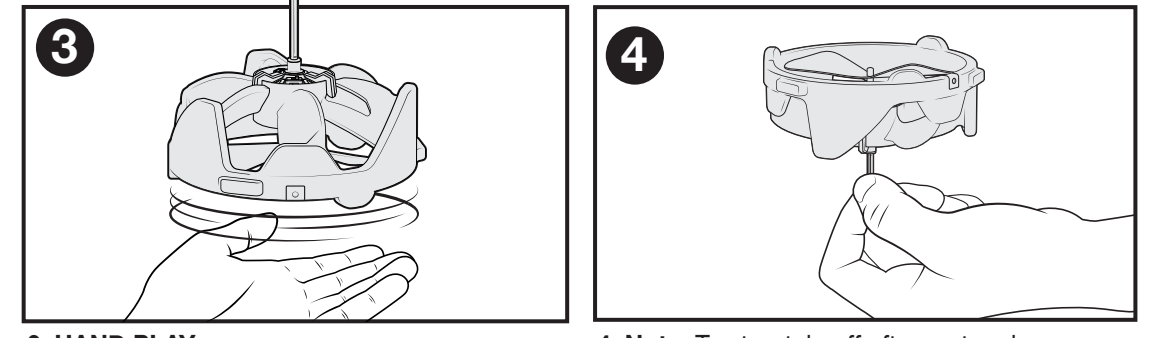


3. Plug the charging cable into a 5V DC computer outlet.
4. Blinking LED indicates battery is charging. Solid LED indicates the battery is fully charged.

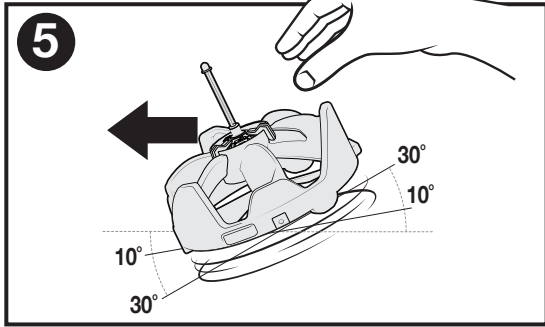
## HOW TO PLAY



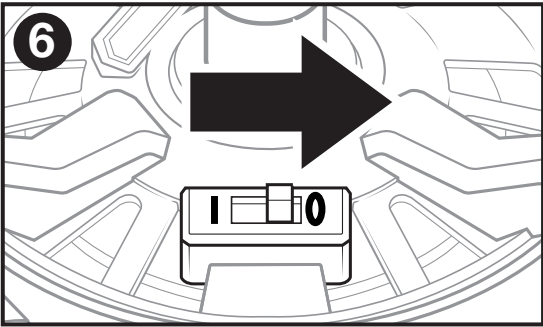
1. Hold your GRAVITOR™ by the trick stick. Turn your GRAVITOR™ "ON". After a few seconds the propeller will begin to spin.  
**CAUTION:** Rotating propellers. Please use care when handling.
2. The GRAVITOR™ will take a few seconds to fully power up.  
**NOTE:** During this process hold the GRAVITOR™ steady with the trick stick or the hovering ability may become unstable. After about 3 seconds you can let go of the trick stick to launch.



3. **HAND PLAY:** The GRAVITOR™ will hover above your outstretched hand.
4. **Note:** To stop takeoff after motors have started, hold the GRAVITOR™ upside down for 2 - 4 seconds. Turn the GRAVITOR™ off and back on to resume flight.

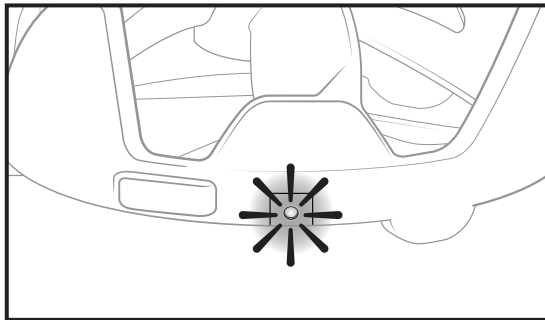


**5. PASSING:**  
Hold the GRAVITOR™ by the trick stick and tip forward 10-30°. Pass gently to another player.

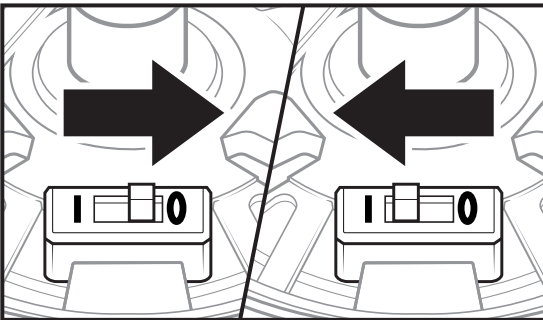


**6.** When finished playing, move the power switch on the GRAVITOR™ to OFF.

## TROUBLESHOOTING



Low battery indication - LED will flash and the GRAVITOR™ will fly low. Recharge for best play experience.



If the GRAVITOR™ has a hard crash, the motors will turn off. You will need to turn it OFF and back ON to restart it.

Location – Fly in a wide-open room away from breakable items. Avoid flying near vents and/or fans, as these may overpower the GRAVITOR™ and make it difficult to control.


**⚠ CAUTION:** Never fly near your face. Keep rotor away from your fingers, hair, eyes and other body parts. Never hold the flying vehicle in your hand when lifting off. DO NOT launch vehicle near people or animals. Stay away from obstacles and electrical hazards.

## For TROUBLESHOOTING questions and solutions, please visit our website: AIRHOGS.COM/GRAVITOR

**NOTE:** If normal function of the product is disturbed or interrupted, strong electromagnetic interference may be causing the issue. To reset product, turn it completely off, then turn it back on. If normal operation does not resume, move the product to another location and try again. To ensure normal performance, change the batteries, as low batteries may not allow full function.

**Safety Precautions:** - Keep hands, hair and loose clothing away from the rotor when power switch is turned ON. - Parental guidance is recommended during play. - Keep your toy in your sight so that you can supervise it all the time. - Users should keep strict accordance with the instruction manual while operating the product. Under the environment with electrostatic discharge, the toy may malfunction and require user to reset the toy.

**CARE AND MAINTENANCE:** Wipe the toy gently with a clean damp cloth. Keep the toy away from direct heat. Do not submerge the toy in water. This can damage the electronic assemblies.

 **CONTAINS 1 X 3.7V 200 mAh LiPo BATTERY PACK.**  
Batteries or battery packs must be recycled or disposed of properly. When this product has reached the end of its useful life, it should not be disposed of with other household waste. The Waste Electrical and Electronic Equipment Regulations require it to be separately collected so that it can be treated using the best available recovery and recycling techniques. This will minimize the impact on the environment and human health from soil and water contamination by any hazardous substances, decrease the resources required to make new products and avoid using up landfill space. Please do your part by keeping this product out of the municipal waste stream! The “wheelie bin” symbol means that it should be collected as “waste electrical and electronic equipment”. You can return an old product to your retailer when you buy a similar new one. For other options, please contact your local council.

**SPECIAL LiPo BATTERY INSTRUCTIONS:** Never charge battery unattended. - Charge battery in an isolated area. Keep away from flammable materials. - Do not expose to direct sunlight. There is a risk of the batteries exploding, overheating, or igniting. - Do not disassemble, modify, heat, or short circuit the batteries. Do not place them in fires or leave them in hot places. - Do not drop or subject to strong impacts. - Do not allow the batteries to get wet. - Only charge the batteries with the specified Spin Master™ battery charger. - Only use the batteries in the device specified by Spin Master™. - Carefully read the instruction guide and use the batteries correctly. - In the unlikely event of leakage or explosion use sand or a chemical fire extinguisher for the battery. - Batteries must be recycled or disposed of properly.

**PRODUCT BATTERY REMOVAL INSTRUCTIONS:** Internal battery is factory installed and non-replaceable. Product disassembly and battery removal must be performed by an adult. Do not puncture, cut, tear, compress or deform product during disassembly. Ensure product is turned off, then use a screw driver to remove all screws. Separate product body halves to expose internal electronics. When battery is visible in its entirety use scissors to cut a single battery wire, immediately wrap the cut wire end with tape to isolate it, repeat until all battery wires are cut and isolated, and the battery is free from the rest of the product. Dispose of battery in accordance with your local battery recycling or disposal laws.

**FCC STATEMENT:** This device complies with Part 15 of the FCC rules. Operation is subject to the following two conditions: (1) This device may not cause harmful interference, and (2) This device must accept any interference received, including interference that may cause undesired operation. This equipment has been tested and found to comply with the limits for Class B digital devices pursuant to Part 15 of the FCC rules. These limits are designed to provide reasonable protection against harmful interference to radio communications. This equipment generates, uses and can radiate radio frequency energy and, if not installed and used in accordance with the instruction, may cause harmful interference to radio communication. However, there is no guarantee that interference will not occur in a particular installation. If this toy does cause interference to radio or television reception (you can check this by turning the toy off and on while listening for the interference), one or more of the following measures may be useful:

- Reorient or relocate the receiving antenna.
- Increase the separation between the toy and the radio or the TV.
- Consult the dealer or an experienced TV-radio technician for help.

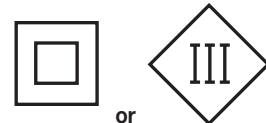
**NOTE:** Changes, adjustments or modifications to this unit, including but not limited to, replacement of any transmitter component (crystal, semiconductor, etc) could result in a violation of FCC rules under part 15 and/or 95 and must be expressly approved by Spin Master Ltd or they could void the user's authority to operate the equipment. Spin Master Inc., PMB #10053, 300 International Drive, Suite 100, Williamsville, NY 14221. To contact the responsible party please visit [fcc.spinmaster.com](http://fcc.spinmaster.com)

**Do not change or modify anything on the toy.**

**⚠ WARNING: IF ROTOR(S) BECOME DAMAGED OR BROKEN, DO NOT FLY. FLYING WITH BROKEN ROTOR(S) MAY CAUSE DAMAGE OR LEAD TO INJURY.**

**BEFORE FIRST USE: Read the user's information together with your child.**

**This toy is only to be connected to equipment bearing either of the following symbols:**



or



**NORTH AMERICA – 1-800-622-8339**  
[customercare@spinmaster.com](mailto:customercare@spinmaster.com)  
**UK – 0800 206 1191, [serviceuk@spinmaster.com](mailto:serviceuk@spinmaster.com)**  
**IRELAND – 1800 992 249**  
**AUSTRALIA – 1800 316 982, [customercare@spinmaster.com](mailto:customercare@spinmaster.com)**

**WWW.SPINMASTER.COM**

For in-depth video instructions go to  
**AIRHOGS.COM/GRAVITOR**

Spin Master Ltd., 225 King Street West, Toronto ON M5V 3M2 Canada  
 Spin Master Inc., PMB #10053, 300 International Drive, Suite 100, Williamsville, NY 14221  
 Spin Master International B.V., Kingsfordweg 151, 1043 GR Amsterdam, NL  
 Spin Master Australia Pty Ltd, Suite 101, Level 1, 18-24 Chandos Street, St Leonards, NSW 2065; ☎ 1800 316 982  
 Spin Master Toys UK Ltd. Secure Trust House, Boston Drive, Bourne End, Buckinghamshire, SL8 5YS, UK

Spin Master logo & © Spin Master Ltd. All rights reserved. Retain this information, addresses and phone numbers for future reference. Content may vary from pictures. Keep away from obstacles and electrical hazards. Spin Master Ltd. reserves the right to discontinue the [www.AIRHOGS.com/GRAVITOR](http://www.AIRHOGS.com/GRAVITOR) website at any time.

MADE IN CHINA

**⚠ WARNING: CHOKING HAZARD – Small parts. Not for children under 3 years.** 