

TO USE (continued):



Toddler Use: Tub for Growing Child

Position tub in a full size bathroom tub where you are bathing your child. Place child in tub to bathe.

Never leave child unattended while in tub.



Shower Unit to Use in Full Size Tub

Position the Baby Bath Shower on the bottom of the full size tub where you are bathing your child. Never use in a tub or sink with more than 1" of water.

Never leave child unattended while in tub.

NOTE: Always keep the drain open in the adult bath tub or sink.

TO STORE

Pull drain plug on bottom of Toddler Tub to release water.

TO CLEAN

To clean the Newborn-to-Toddler Bath Center and Shower, surface wash only with damp cloth, mild soap and warm water. Do not submerge the battery compartment in water or run a stream of water directly on it.

MAINTENANCE:

Make sure all hose connections are tight. Make sure screw on the battery compartment is tight.

BATTERY WARNING

- Do not mix old and new batteries.
- Do not mix alkaline, standard, or rechargeable batteries.
- Remove batteries when product is stored for long periods of time or when batteries are exhausted.
- Dispose of exhausted batteries according to instructions.
- Do not recharge non-rechargeable batteries.
- Batteries are to be inserted with correct polarity.
- CAUTION: Risk of explosion if battery is replaced by an incorrect type.
- Keep all batteries away from children.

Summer Infant (USA), Inc.

1275 Park East Drive
Woonsocket, RI 02895 USA
1-401-671-6551

© 2022 Summer Infant (USA), Inc.

Colors and styles may vary.

MADE IN MEXICO WITH IMPORTED COMPONENTS.



Please read the following instructions and warnings carefully. Keep this instruction manual for future reference. Tool required: Phillips head screwdriver (not included). Batteries required: 6 "AA" Alkaline (not included). **For Technical Support, email us at summerinfant.com/contact** Adult assembly required. For use with children birth to 2 years.

INSTRUCTION MANUAL

NEWBORN-TO-TODDLER BATH CENTER AND SHOWER

WARNING

Drowning Hazard: Babies have drowned while using infant bath tubs and slings.

To prevent drowning:

- Stay in arm's reach of your baby.
- Use tub only in empty adult tub or sink for safe use. Place sling only in infant tub or sink for safe use.
- Keep drain open in adult tub or sink.
- Never rely on a toddler or preschooler to help your baby or alert you to trouble. Babies have drowned even with other children in or near bath tub.
- Babies can drown in as little as 1 inch (2.5 cm) of water. Use as little water as possible to bathe your baby. NEVER fill tub past MAX fill line.
- TO AVOID SERIOUS INJURY: always test the water temperature in the baby tub or being put into the tub to make sure that it is a typical temperature between 90°F and 100°F (32.2° C and 37.8°C) before placing child into bath sling or baby tub.

- This product is not a toy. DO NOT allow children to play with it.

Fall Hazard: Babies have suffered head injuries falling from infant bath tubs and slings.

To prevent falls:

- Place tub only in adult tub or sink for safe use.
- Place sling only in infant tub or sink for safe use.
- Never lift or carry baby in tub and/or sling.
- STOP using bath sling when baby starts trying to sit up or has reached 20lbs, whichever comes first.
- Never use on uneven or elevated surfaces.
- NEVER leave children unattended.
- Discontinue use of product if damaged, broken, or disassembled.

D0000000997 9.22

FEATURES AND COMPONENTS:



BATTERY INSTALLATION:

Step 1: Twist lid of pump unit counter-clockwise (Figure A).

Step 2: Loosen screw on pump that holds the battery compartment cover in place (Figure B).

Step 3: Insert 6 new alkaline "AA" batteries into battery compartment (Figure C). Be careful to install the batteries properly and in the right direction.

Step 4: Place lid on battery compartment. Make sure that the lid alignment indicator is a half of an inch to the right of the compartment alignment indicator (Figure D).

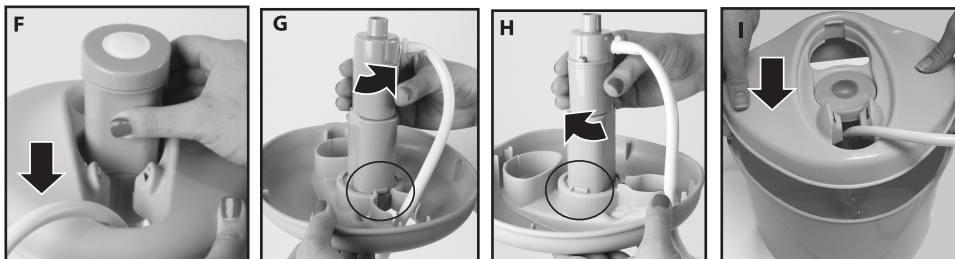
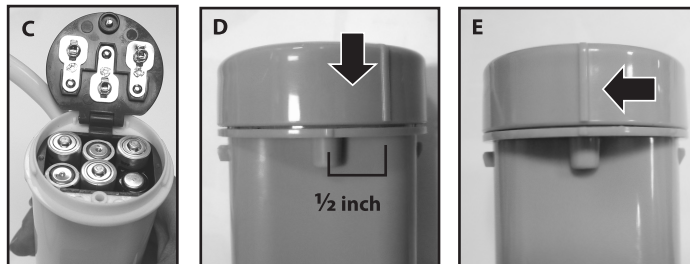
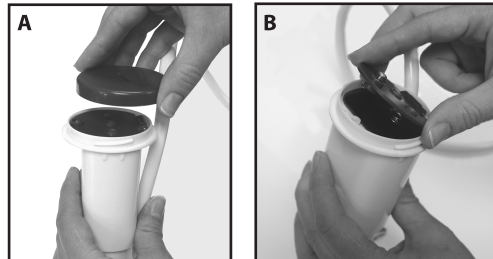
Step 5: Twist lid clockwise so that the alignment indicators match up. DO NOT OVERTIGHTEN. (Figure E)

Step 6: Place pump unit into removable top (Figure F).

Step 7: Turn unit over and twist pump so hose faces the right and two notches face front and back (Figure G).

Step 8: Twist pump clockwise so hose faces front and notches face the sides (Figure H).

Step 9: Place shower unit lid onto reservoir body (Figure I).

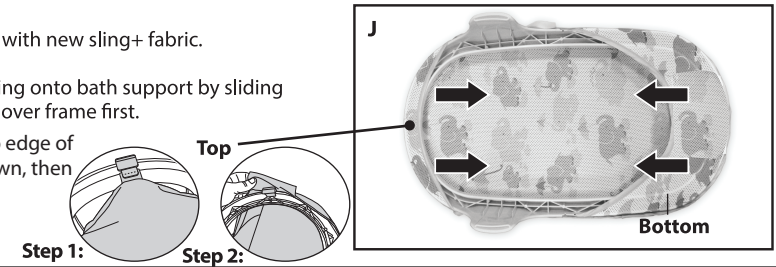


BATH SUPPORT ASSEMBLY:

Use figure J "set up" with new sling+ fabric.

Securely fit fabric sling onto bath support by sliding bottom of the sling over frame first.

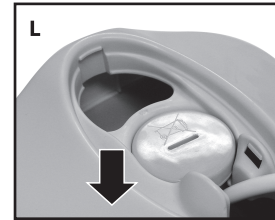
Attach the clip onto edge of top of frame as shown, then cover the clip with the sling.



SET UP:



Step 1: Place the Baby Bath Shower into the Toddler Tub (Figure K).



Step 2: Fill the reservoir with water through the opening on top (Figure L). Looking down into the opening, fill only to the divider inside the reservoir (about 2" below bottom edge of opening).

Step 3: Never use shower in a tub or sink with more than 1" (2.5 cm) of water. Point the spray handle towards baby and press the button on the top of pump unit to turn the sprayer on.

Step 4: Press button on top of pump unit to turn the sprayer off. The Baby Bath Shower contains enough water for a complete bath. If necessary, refill the reservoir.

TO USE:



Newborn Use: Newborn Bath Sling in Sink or Tub

To use in sink: Position bath sling on the bottom of the sink. Place newborn on the bath sling to bathe. **Never leave child unattended while in the sink.**

To use in tub: Position tub in a full size bathroom tub where you are bathing your child. Position bath sling on the bottom of the tub. Place infant on bath sling to bathe. **Never leave child unattended while in tub.**

Point the spray handle toward baby and press the button on the top of the pump unit to turn the sprayer on.

Press button on top of pump unit to turn the sprayer off.

NOTE: Always keep the drain open in the adult bath tub or sink.

