

SPEAKMAN®

SM-1080-ADA-P- E2

Installation, Operation & Maintenance Instructions

NEO ADA HAND-HELD SHOWER/TUB COMBINATION WITH GRAB/SLIDE BAR

DESCRIPTION

Speakman Neo ADA Hand-held Shower Combination unites the best products included in our Neo Series, while maintaining ADA requirements. The combination begins with our anti-scald balanced pressure valve with integral stops, featuring a brass body and adjustable temperature limit stop. The wall plate and handle are designed with definitive Neo Collection styling. Piston-type pressure balancing/ceramic regulating cartridge assembly with built-in check valves. Meets ASME A112.18.1 / CSA B125.1 & ASSE 1016 standards. The featured product in the Neo hand-held shower combination is the ANYSTREAM® VS-3010-E2 hand shower with a 4" outer spray adjustment ring. Five self-cleaning plunger nozzles resist scale build-up and provide 50 spray streams for a full body coverage pattern. The center core nozzle delivers 12 massaging jets and a combination spray is included. Water-conserving pressure compensating AUTOFLO® device reduces flow to 2.0 gpm (7.6 L/min) to meet existing ANSI A112.18.1 Standard. To control the water supply between the brass S-2540 shower arm and your VS-3010-E2 is the VS-156 ADA compliant volume control. The adjustability of your VS-153 grab/slide bar will allow you to choose the perfect height to rest your hand shower, while still meeting ADA standards.

SPECIFICATIONS

SM-1000-P ANTI-SCALD BALANCED PRESSURE VALVE:

CONNECTIONS: ½" Female Copper Sweat Inlets & shower outlet;
½" NPT female tub outlet

FLOW RATE: For use with shower heads rated at
2.0 gpm (7.6 L/min) or higher.

VS-3010-E2 HAND-HELD SHOWER:

SUPPLY: ½" NPSM female (Hose End)

FLOW RATE: 2.0 gpm (7.6 L/min)

S-2540 SHOWER ARM:

SUPPLY: ½" NPT male inlet

OUTLET: ½" NPT male outlet

VS-156 VOLUME CONTROL:

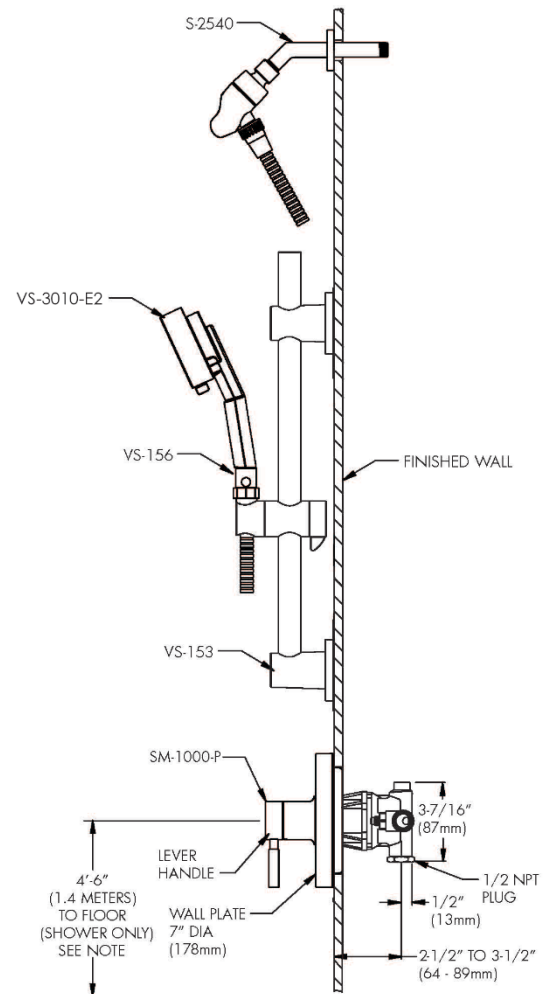
SUPPLY: ½" NPSM male inlet

OUTLET: ½" NPSM female outlet

INSTALLATION

See individual products for installation of the components and warranty information.

ROUGH-IN



NOTE: FOR ADA MOUNTING LOCATIONS CONSULT ADAAG,
ANSI A117.1 OR STATE REGULATIONS.

SPEAKMAN®

400 Anchor Mill Rd. New Castle, DE 19720 Phone: 800-537-2107 Fax: 800-977-2747

02/02/18

www.speakman.com

92SM1080ADAPE21