



FABER-CASTELL  
since 1761

# Goldfaber Sketch

## Alcohol-based Marker

### *Drawing trends*

The wide range of possibilities with alcohol-based colour markers

### *Layout markers*

What does that mean?

### *Blending*

Use these tips to achieve soft colour transitions

### *Themed sets*

Perfect colour ranges for your drawing projects

**59** colours + blender  
from transparent to opaque

The perfect duo



## Sustainable commitment

### Carbon-neutral production

Faber-Castell's forests in Prata, Southeast Brazil, absorb 900,000 tonnes of carbon dioxide (CO<sub>2</sub>), according to a scientific study by TÜV-Rheinland in 2012. The 10,000



hectare forestry project not only secures stocks of sustainable wood but also protects the environment through photosynthesis, which converts the CO<sub>2</sub> into biomass. The pine trees and forests in Prata, one third of which have been left untouched, therefore neutralise the climate-relevant carbon footprint of Faber-Castell's global production facilities. Large parts of the forests have become a habitat for rare species of animals and plants, which is particularly important. A respectful interaction with nature is key alongside sustainability.



Wood from certified sustainable forestry is the most important raw material for the Faber-Castell product range.



The Faber-Castell Group works on reducing plastics or replacing them with recycled materials in packaging and products.



As a world leader in the production of erasers, Faber-Castell avoids the use of harmful softeners. The erasers are produced under strict quality control and are PVC-free.



Every product contains valuable raw materials. To extend their usability, many products can be refilled.



Further information can be found on our sustainability webpage and in our sustainability Fact Sheet.  
<https://www.faber-castell.com/corporate/sustainability>



### Faber-Castell stands for quality

Faber-Castell is one of the world's leading manufacturers and marketers of quality products for writing, drawing and creative design – the brand name is world-famous. In the core area of wood cased pencils, the group is the most important and oldest manufacturer in the world with an annual production capacity of more than two billion graphite and colour pencils.

Regardless of personal motivation and individual skill level – the new Creative Studio concept allows both beginner and hobby artists to express their creativity and offers them everything they need to do so: high-quality products for drawing and painting, a perfectly matched colour range, material that inspires and fosters, and an incomparable versatility in terms of use.



The high-quality painting and drawing materials of the Creative Studio series will impress amateur and aspiring artists.

The Creative Studio  
assortment



Watercolours in pans • 48 colours

Water Brush

Round brush • 6 sizes

Watercolours • 24 colours

Acrylic colours • 24 colours

Oil colours • 24 colours

Pitt Artist Pen • 66 colours

Creative Marker • 2 colours

Neon Marker • 6 colours

Goldfaber Aqua Dual Marker • 60 colours

Goldfaber Sketch Marker plus blender • 59 colours

Metallics Marker • 12 colours

Textliner Metallic • 8 colours

We would like to inspire you – with our finest quality and a fascinating variety of colours.

Oil pastels • 48 colours

Soft pastels • 70 colours

Goldfaber Aqua Watercolour pencils • 60 colours

Goldfaber Graphite pencils • 10 degrees of hardness

Goldfaber Colour pencils • 48 colours

**Sketch  
Marker**



**Good to know**

All Sketch Marker colours and the blender are available individually.



## Goldfaber Sketch Marker

Creative design can be a wonderful hobby that allows you to relax and recharge your batteries for your everyday life. The many exciting posts on social media channels show that for many, drawing and painting are much more than a hobby and even become a profession for some.

As a student, creative blogger, illustrator or hobby artist, the 59 colours and the blending pen offer you a wide colour spectrum for many of your requirements and motifs. The additional themed sets with their optimally coordinated special colours are a wonderful addition to the basic sets.



**Versatile  
themed sets**





### Good to know

The term „recycled material“ refers to a recycled plastic from plastic waste.

For the sake of the environment

## Living sustainability

Faber-Castell has always set high quality standards for its products. For many years, the endeavour to produce in an environmentally friendly way has been a top priority at Faber-Castell. Every new product is developed in compliance with the company's own standards and checked for sustainable production.

### 100% recycled material

Faber-Castell is increasing its use of recycled materials. The caps and barrels of the Goldfaber Sketch Markers are made of 100% recycled material. Due to the production process, colour deviations may therefore occur in these plastic parts.

### 100% colour

Variations in barrel colour naturally have no effect on the ink colour: the alcohol-based ink guarantees consistent colour quality. A consistent flow of ink in both the tip and the nib as well as a high yield of the pen are also guaranteed.

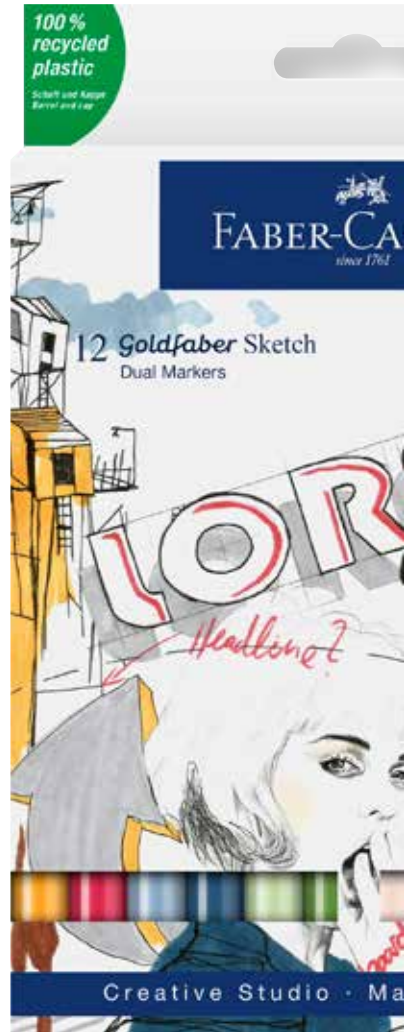


Faber-Castell uses renewable raw materials and recycles in its packaging. The Goldfaber Sketch Markers therefore come in a recycled cardboard wallet.

70%

According to the consumer advice centre, more than 70% of paper is recycled today. A large part of cardboard packaging is produced with the addition of used paper.

FABER-CASTELL  
since 1761





### Good to know

No matter which end of the pen you use, the flow of colour is always guaranteed on both sides.



Sketch Marker

## Goldfaber Sketch Markers

The Goldfaber Sketch Markers feature two different ends that complement each other perfectly. With the metal-encased fineliner tip, you can create drawings, set accents in coloured areas and use the fine lines to create a wide variety of hatchings. The brush nib offers you a wide range of options for painting areas of any size. You control the line width by varying the angle of inclination and drawing pressure.

### Tip

The colours of alcohol-based markers look slightly lighter when dry. Our tip: create a colour chart or colour circle, preferably on your preferred paper.

### Composition

The ink of the Goldfaber Sketch Markers consists of alcohol and dye. The alcohol evaporates quite quickly after the ink is applied, so that the ink dries quickly. This is why you need to work quickly when using the Sketch Markers.



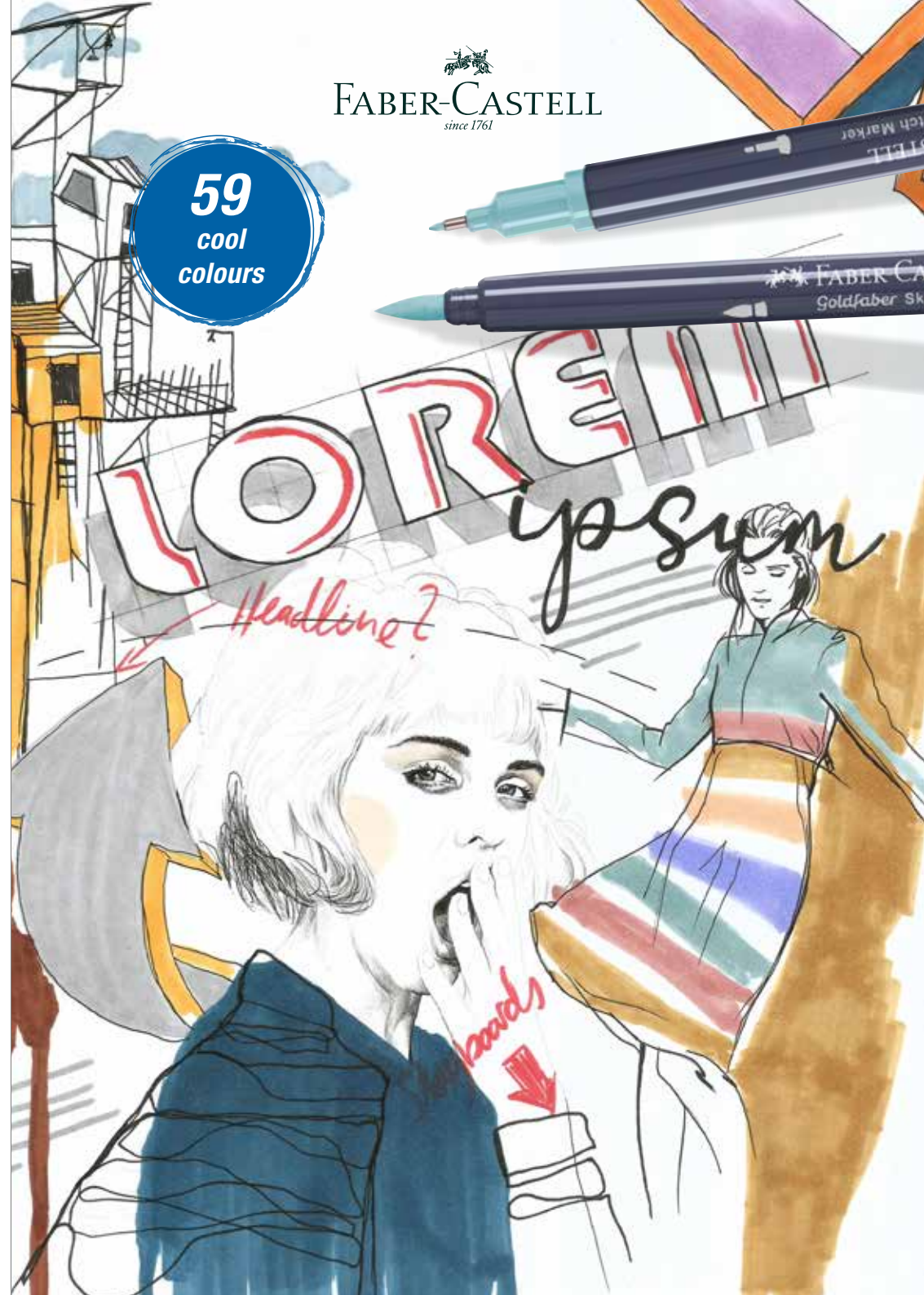
### Colour characteristics

Unlike normal felt-tip pens, which tend to streak, the colours of the Goldfaber Sketch Markers flow homogeneously into each other.



FABER-CASTELL  
since 1761

59  
cool  
colours





## Basic sets

### Good to know

If you use coarser-textured paper, for example, the pen tip is subjected to greater stress and loses its strength more quickly.

## Basic sets

The colour combinations of the basic sets provide you with all the colours you need for all possible drawing styles. By mixing and overlaying, you have an enormous range of colours at your disposal.

Many popular drawing trends work with colour families that cannot be easily mixed from the basic colours. For these special requirements, Faber-Castell has developed eight colour-specialised themed sets, which we are going to present to you on the following pages. Here you will find skin tones, pastel colours as well as theme-specific colour families.



12 colours



24 colours

## The right paper

Choosing the right paper is very important when it comes to drawing with alcohol markers. Using smooth marker and layout paper is the best idea – these have a special coating on the front that prevents bleeding. The coating also ensures that colours remain moist and workable for longer.

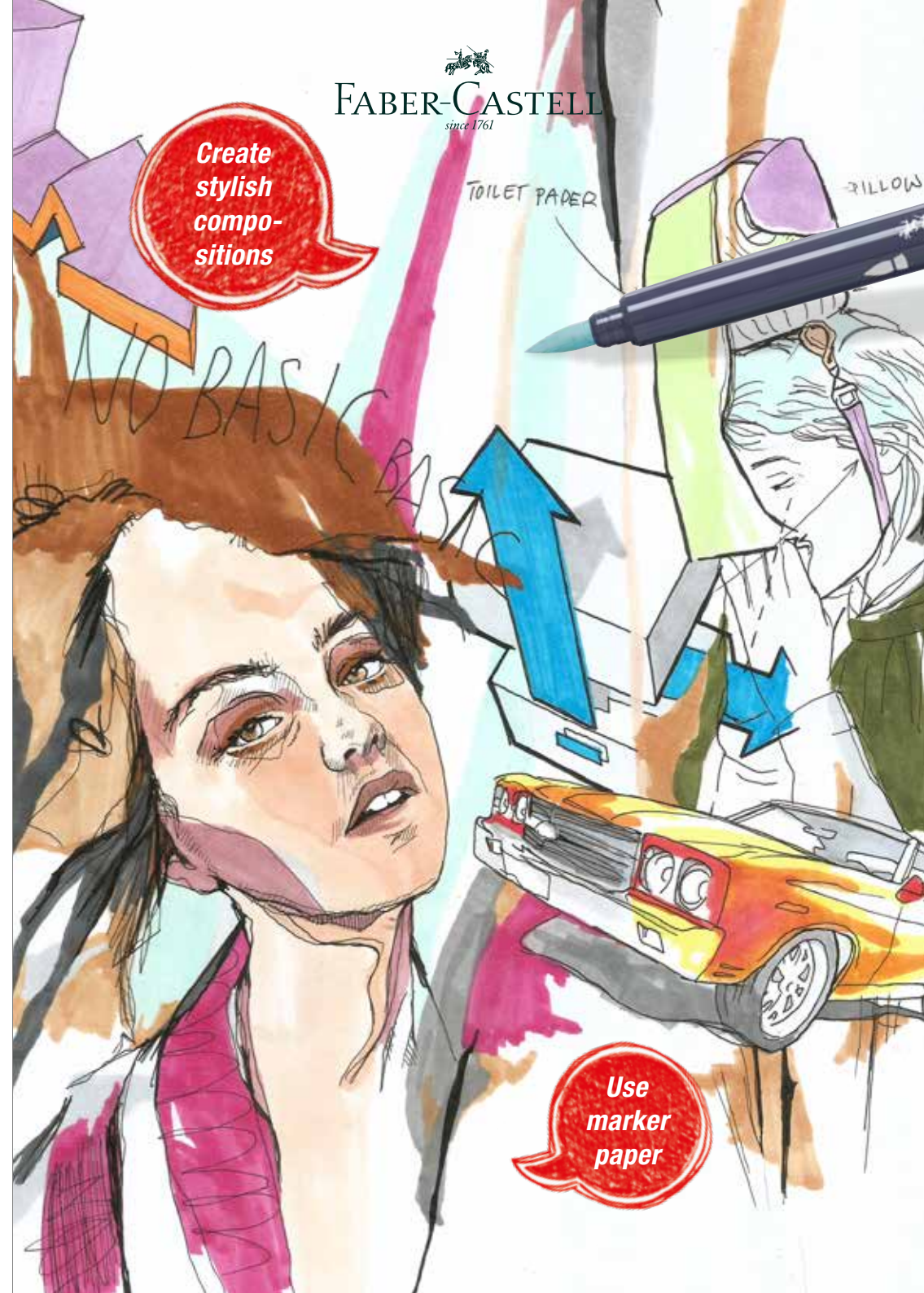
## Rather not...

Copy, printer and watercolour paper tends to be absorbent and therefore less suitable for drawing with alcohol markers. They “suck” the liquid out of the marker, so to speak.



FABER-CASTELL  
since 1761

Create stylish compositions



Use marker paper

## Portrait

### Portrait

A skilful portrait is not only based on a perfect drawing, but also on the choice of the right skin tone and good lighting. The colours of the Portrait themed set enable you to draw the most diverse skin types. By cleverly mixing colours from the basic sets, you can expand the colour range of the skin tones.

#### Blending

Use the blender for soft colour transitions and colour gradients from light to shadow areas. With this colourless alcohol marker, you can blend the colours of two adjacent colours into each other, refine colour edges or gently lighten parts of the picture.



#### Colour gradient

For a quick effect, briefly hold the nibs of a darker and a lighter Sketch Marker together so that dark ink flows into the lighter nib. When you then paint with the light-coloured Sketch Marker, the ink that flows in creates a gradient from dark to light.



**Good to know**  
Don't worry, dark colour residues in a light marker or the blending marker quickly removed on a cloth or paper.



**Dare to create bold portraits**

#### Hatching

With parallel or cross hatching you can cleverly emphasise shadow areas of the portrait. Use both light and dark fineliner strokes for this. The interplay of hatching and background colour results in delicately emphasised shadows on the face. Use hatching sparingly, though, and only as additional small accents.





## Graphic Novels

# Graphic Novels

Graphic novels thrive on expressive images that tell a complex story or even a novel. The narrative takes place in logical sequences of images from left to right and from top to bottom, and gets by with little or no text at all.

In comics and graphic novels, the visualisation of emotions is particularly important and pronounced. Gestures and facial expressions are often somewhat exaggerated to build up drama and tension.

## The eyes

With expressive eyes you convey the emotions of the actors to the reader. Use glazes to add depth to the eye area and plan white light reflections in the form of dots, strokes and curves when drawing the pupil to give the eye a shine. Use delicate grey or skin tones to create perfect shadows within the eye.

### Good to know

The eye has the shape of a sphere.  
An eye looks three-dimensional if you create shadows towards both corners of the eye.



## Glazes

Glazes are transparent layers of colour that you overlay one after the other. The result is an optical mixture of colours. Each layer must be dry before you can put another layer on top of it. Several glazes of one colour increase the colour saturation.

Graphic look without shadows



Three-dimensionality with shadows and points of light



FABER-CASTELL  
since 1761

Tell gripping stories with pictures



# Fashion



## Good to know

Like the colour markers, the blender is alcohol-based. The difference is: it does not contain any colour.



## Fashion

Clothing underlines the individual aura of a figure, no matter whether you are drawing professional figurines in the fashion industry or people in urban sketching. You can also use clothes and fashionable accessories to emphasise character traits.

The colours of the Fashion themed set are deliberately muted and create a stylistically secure colour space that you can complement with colours from the Basic sets.

## Darkening colour

To darken a colour, you can use colour mixtures that are created by glazing. A wide variety of colour shades can be created depending on the order in which the colours are overlaid. Document your favourite mixed colours in a card index.



## Lightening colour

Apply a colour you want to lighten to a sheet of film. Then quickly wet the paper with the blender. Use the blender to take up some of the colour from the film and paint it onto the dampened area of the paper. The result is a pastel colour that brilliantly expands your colour range.



Combine water-soluble media

## Mixed Media

A good alternative for vivid backgrounds can be achieved by using water-soluble media. Try the Goldfaber Aqua Dual Markers or the watercolourable Goldfaber Aqua. However, you should use a suitable paper that does not curl too much after watercolouring.





Manga

## Manga

As in comics and graphic novels, stories in manga are told in successive image sequences. The difference to comics is that the narrative direction is from right to left and from back to front. Even in a single image, the image statement follows from right to left.

### Drawing hair

Hair, along with eyes, is a stylistic device to give a character a distinctive look. Combine Goldfaber Sketch Markers and Goldfaber colour pencils to give a hairstyle an extravagant look. To do this, draw individual hairs on the previously coloured hair surface with a well-sharpened colour pencil. A really cool effect!

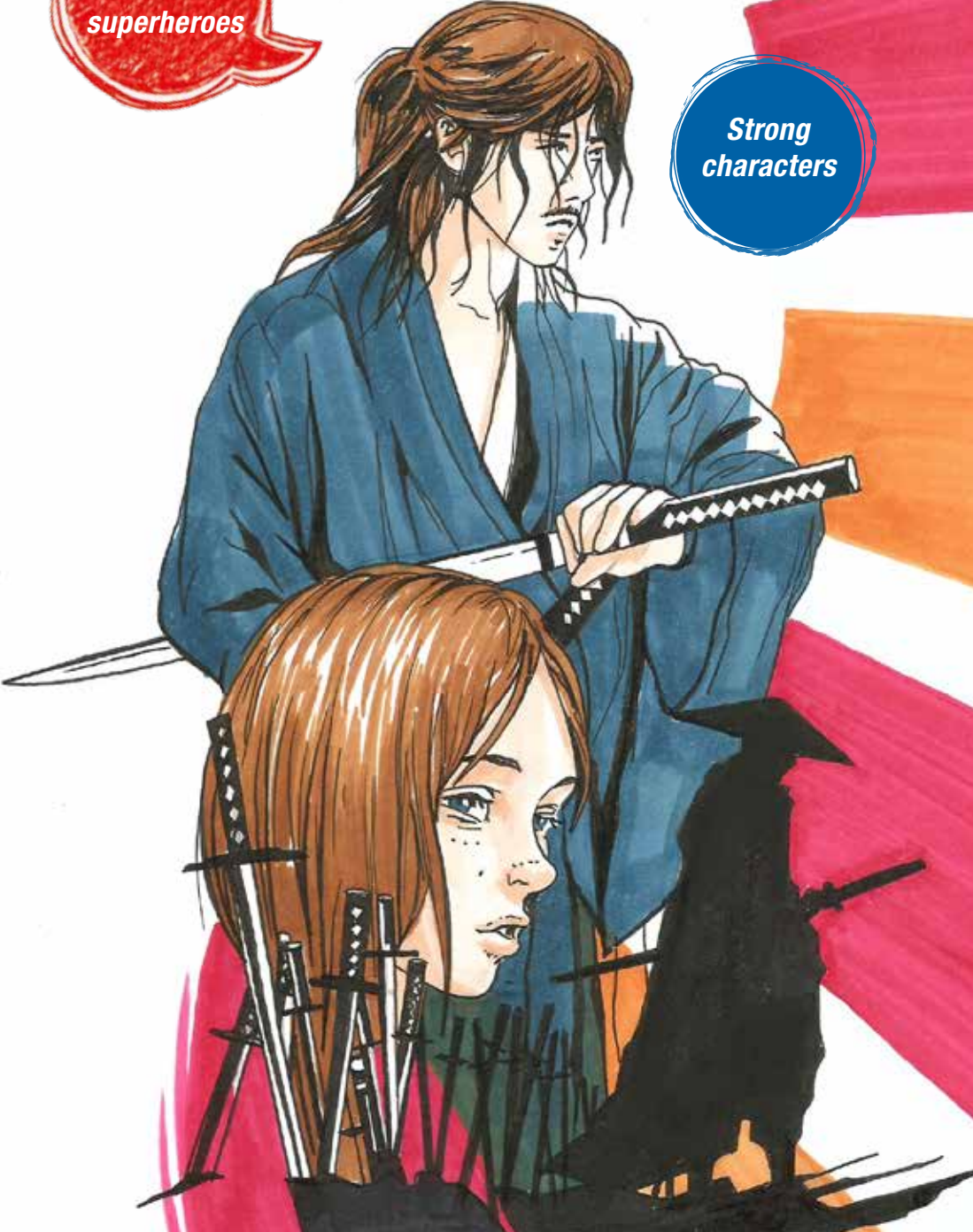
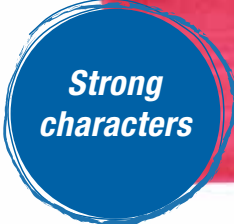


### Lights in the hair

Every mangaka implements the archetypes that exist in manga drawing in their own individual drawing style. This also applies to hair, which you can make matt or glossy. In the beginning, however, it is better to plan too much white space for light reflections than too little. With time you will develop a feeling for the right amount of white space.



FABER-CASTELL  
since 1761



Cars

Striking contrasts

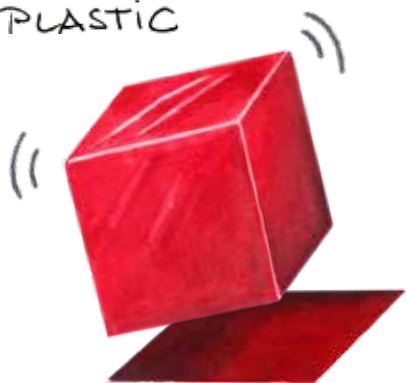
## Cars

Are you a technophile and do you like to draw avant-garde cars, racy motorbikes or futuristic-looking flying objects? Then you'll have a great time with the Cars themed set!

### Light reflections

Surfaces such as metal, glass and plastic are smooth and ensure that light refracts in hard, clear edges. Materials such as glass or chrome have no colour of their own and live off the colours of their surroundings. The colours of the external environment are reflected in chrome, while in glass the translucent colours of a background stand out.

PLASTIC



CHROME



GLASS



### Planning lights

Plan the highlights in your drawings so you know which areas to keep white. For example, emphasise the edges of monochrome objects with clear white edges.

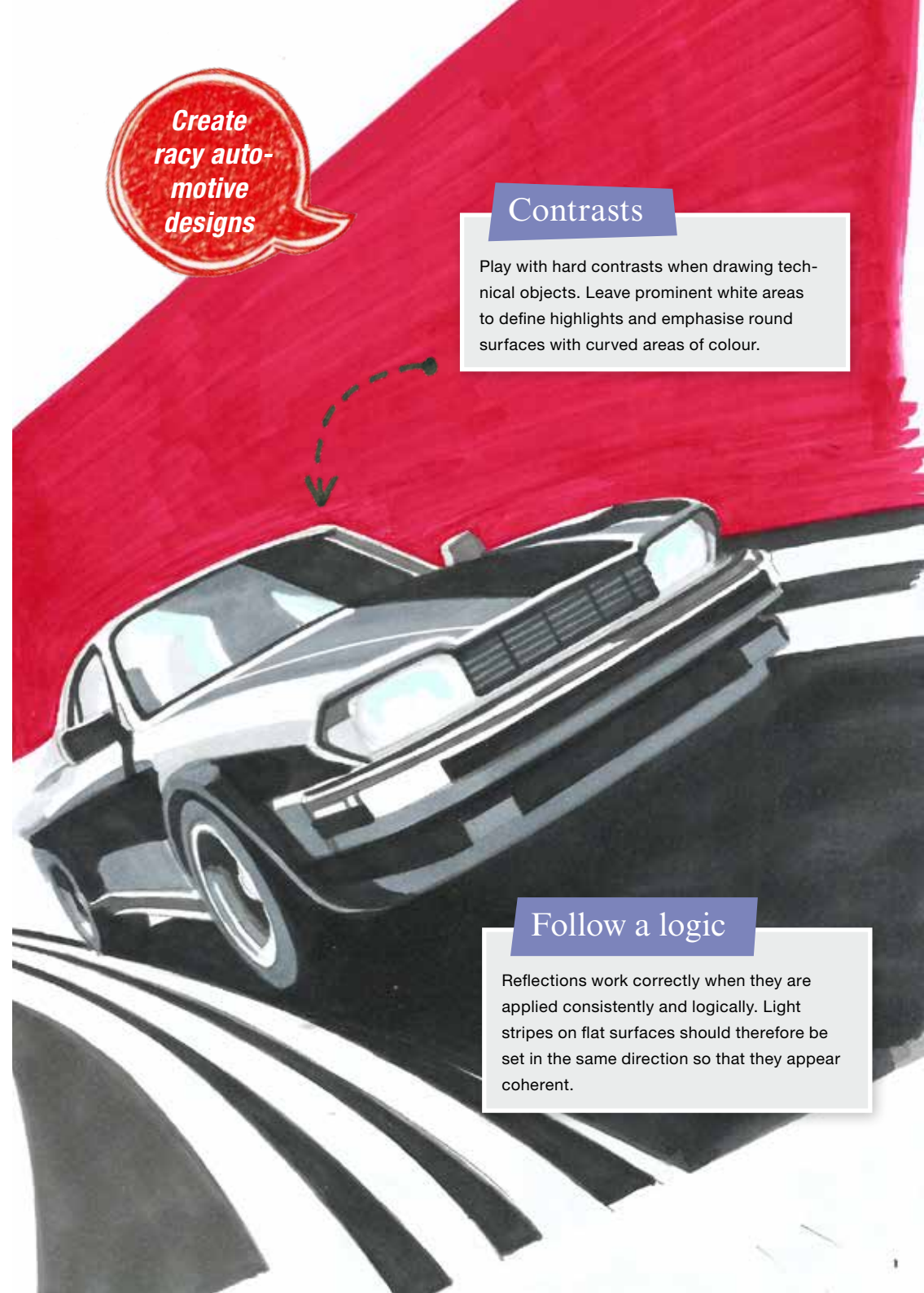
Create racy automotive designs

### Contrasts

Play with hard contrasts when drawing technical objects. Leave prominent white areas to define highlights and emphasise round surfaces with curved areas of colour.

### Follow a logic

Reflections work correctly when they are applied consistently and logically. Light stripes on flat surfaces should therefore be set in the same direction so that they appear coherent.





# Product design

For techies



## Product design

Colour, three-dimensionality and surface texture are important attributes in the presentation of new products. Hard, smooth surfaces bring out clearly contoured light reflections; soft, fabric-like textures are more clearly recognisable as such through structures.

Die 6 Farben des Themensets beschäftigen sich ausschließlich mit Blau- und Grautönen, mit denen du deinen Objekten eine technische Anmutung verleihst.

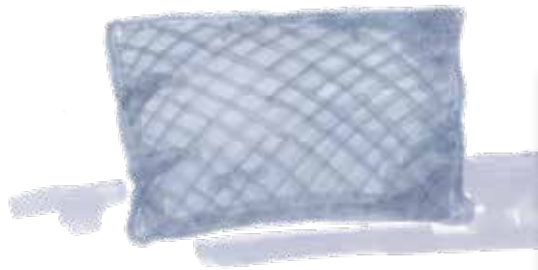
### Colour saturation

Use the transparency of the lighter colours to draw beautiful colour gradations. By overlaying a single colour several times, you can control the saturation.

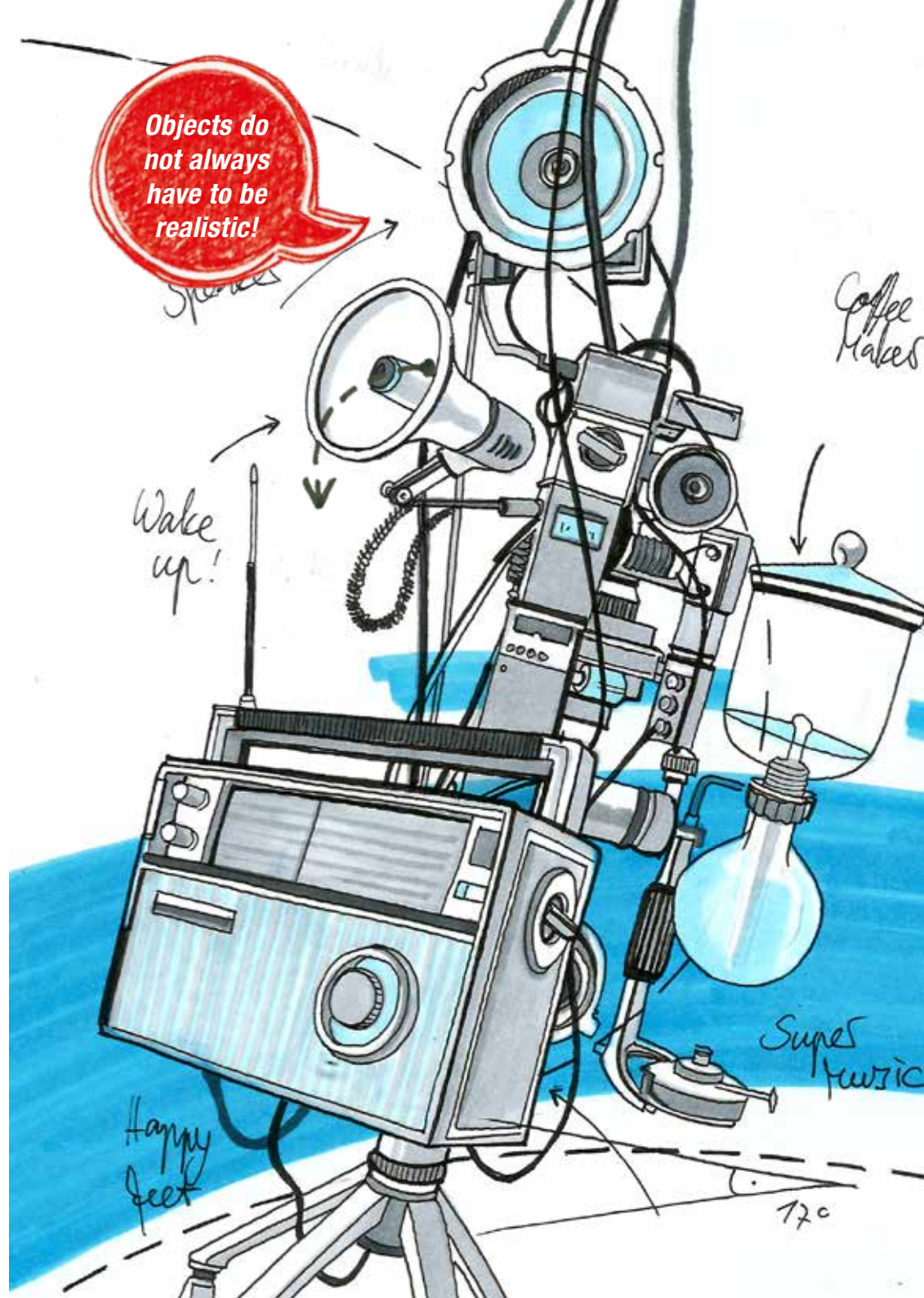


### Drawing textures

For the depiction of fabrics, place several layers of colour – whether single or multi-coloured – crosswise on top of each other. Also use different line widths for this. A simple but convincing trick!



Objects do not always have to be realistic!



# Architecture



Ideal for students



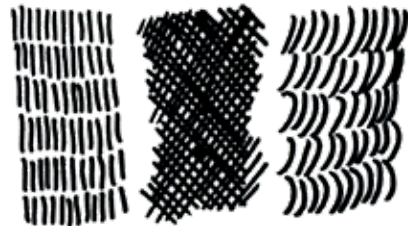
## Architecture

The Architecture themed set contains broken colour tones with which you can create balanced green spaces as well as transparent surfaces such as glass. In combination with colours from the basic sets, you can create stylish colour mixes to create visionary architecture.

### Line variations

For drawing buildings, you should use all the stroke variations that both ends of the pen offer. The fineliner tip gives you the security of a constant stroke, while the width of the brush nib allows you to create wider strokes and smaller areas.

FINELINER

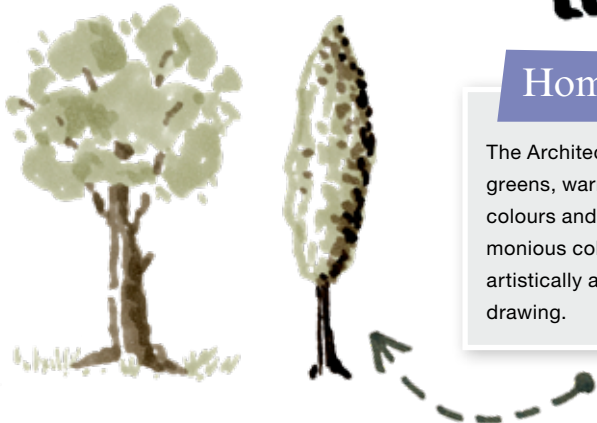


BRUSH



### Homogeneous areas

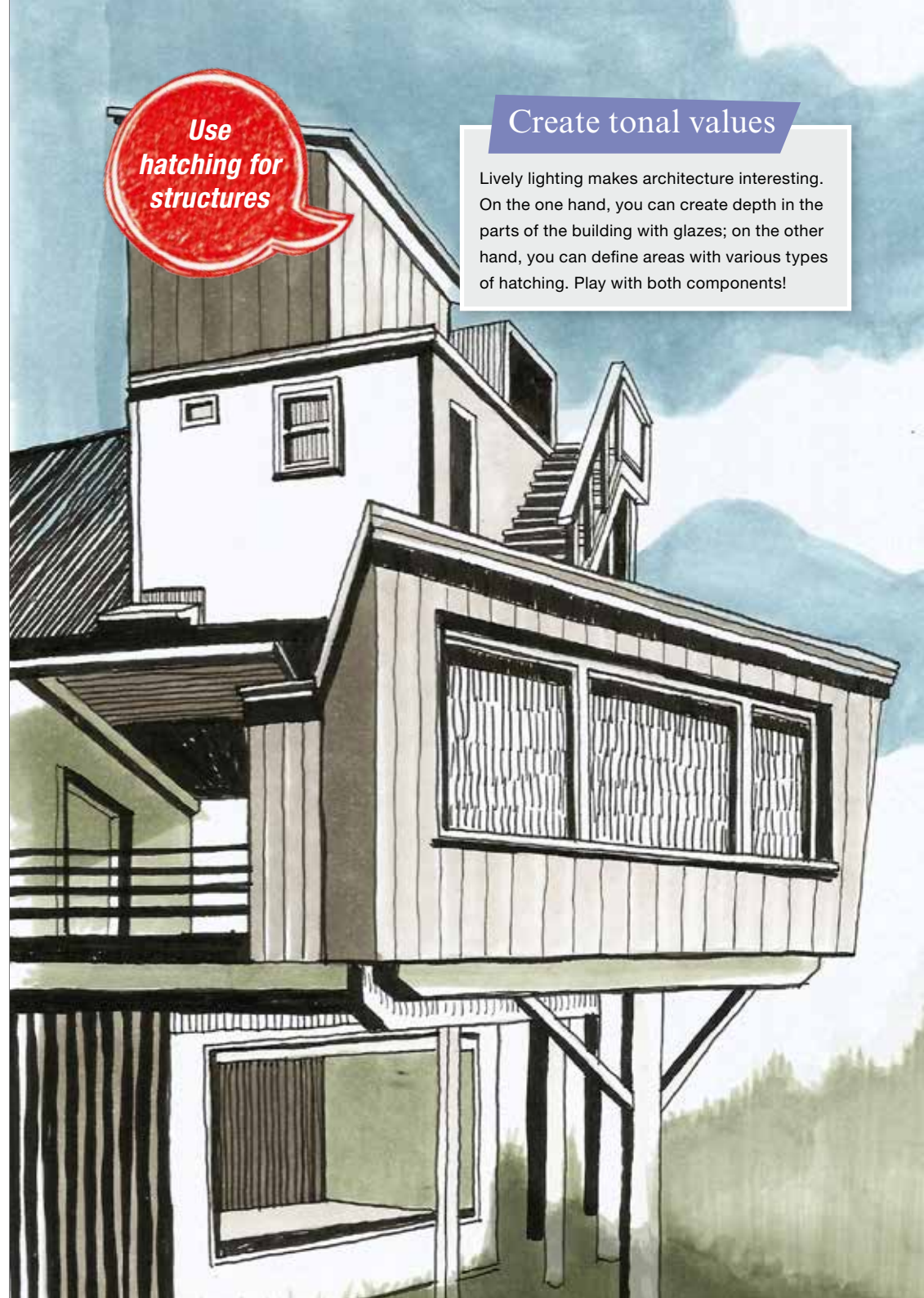
The Architecture themed set features muted greens, warm greys and a dark sepia. These colours and their mixed tones create a harmonious colour impression that discreetly but artistically accompanies every architectural drawing.



Use hatching for structures

### Create tonal values

Lively lighting makes architecture interesting. On the one hand, you can create depth in the parts of the building with glazes; on the other hand, you can define areas with various types of hatching. Play with both components!



Kawaii

## Kawaii

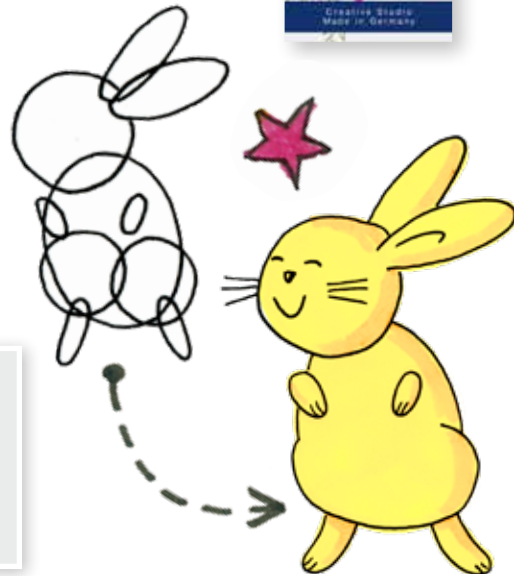
Kawaii is the Japanese term for cute, childlike, sweet or endearing. And these are exactly the attributes you can use to your heart's content when drawing kawaii.

In Japan and elsewhere in the Asian region, these childlike images have shaped an entire style. Which is not surprising because drawing kawaii is simply pure, relaxing fun!

### Simple shapes

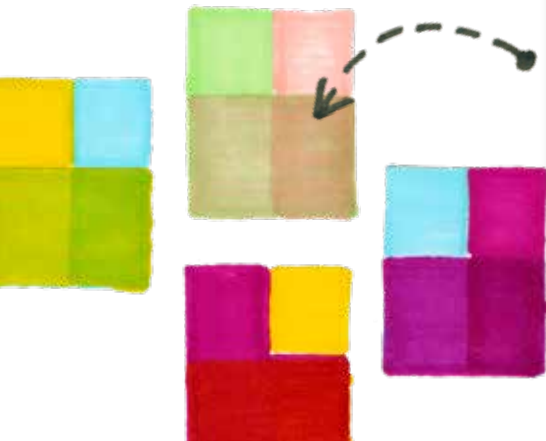
Kawaii objects and figures can be built up very well from simple geometric shapes. To create the sketch, you can also use circular or elliptical templates. To make your figure look childlike, draw the head relatively large.

Childlike and emotional



### Mixing colours

Alcohol-based marker colours can hardly be mixed physically, but only by overlaying. With the colours of the themed set, you can already create many interesting mixed colours. In order to be able to reproduce the colour mixtures, it is best to create a mixing table in which you also record the order of the colour overlays.



### Popular: eyes!

In Kawaii, almost every figure or object gets eyes: cakes, cacti, fruit, packaging, the list is endless....

Usually the eyes are drawn quite large, but feel free to follow your own style. There is no right or wrong here!

Kawaii drawing is such fun!



Colours

59 colours

Have fun drawing and painting!



FABER-CASTELL since 1761

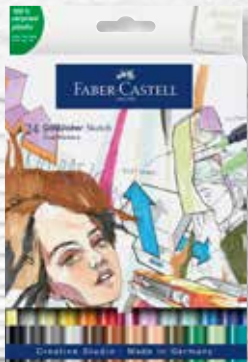
Assortment

Colour	No.	Colour name
	104	Light yellow glaze
	107	Cadmium yellow
	109	Dark chrome yellow
	111	Cadmium orange
	115	Dark cadmium orange
	118	Scarlet red
	126	Permanent carmine
	127	Pink carmine
	125	Middle purple pink
	304	Vintage rose
	131	Coral
	186	Terracotta
	303	Powder
	281	Sand
	382	Dull beige red
	132	Beige red
	119	Light magenta
	196	Lavender light
	136	Purple violet
	247	Indanthrene blue
	151	Helioblue reddish
	451	Saltwater blue
	449	Azure blue
	164	Water blue
	453	Dark pigeon blue
	452	Light pigeon blue
	311	Vintage turquoise
	310	Pale mint
	240	Aqua
	450	Indigo

Colour	No.	Colour name
	313	Dark cobalt green
	316	Monstera green
	112	Leaf green
	312	Fresh bamboo
	314	Light earth green
	207	Dull lime
	168	Earth green yellowish
	173	Olive green yellowish
	183	Light yellow ochre
	383	Light burnt sienna
	378	Mahogany
	280	Burnt umber
	175	Dark sepia
	347	Dusty mauve
	274	Warm grey V
	315	Green clay
	272	Warm grey III
	270	Warm grey I
	241	Cold grey XI
	242	Cold grey XII
	243	Cold grey XIII
	244	Cold grey XIV
	331	Neutral grey I
	332	Neutral grey II
	333	Neutral grey III
	334	Neutral grey IV
	335	Neutral grey V
	336	Neutral grey VI
	199	Black
	200	Colourless blender



16 47 12



16 47 24



16 48 06



16 48 07



16 48 08



16 48 09



16 48 10



16 48 11



16 48 12



16 48 13





**A.W. Faber-Castell Vertrieb GmbH**, Nürnberger Straße 2, 90546 Stein, Germany  
Telefon +49 (0)911 9965-0, Fax +49 (0)911 9965-5856, [www.faber-castell.com](http://www.faber-castell.com)