

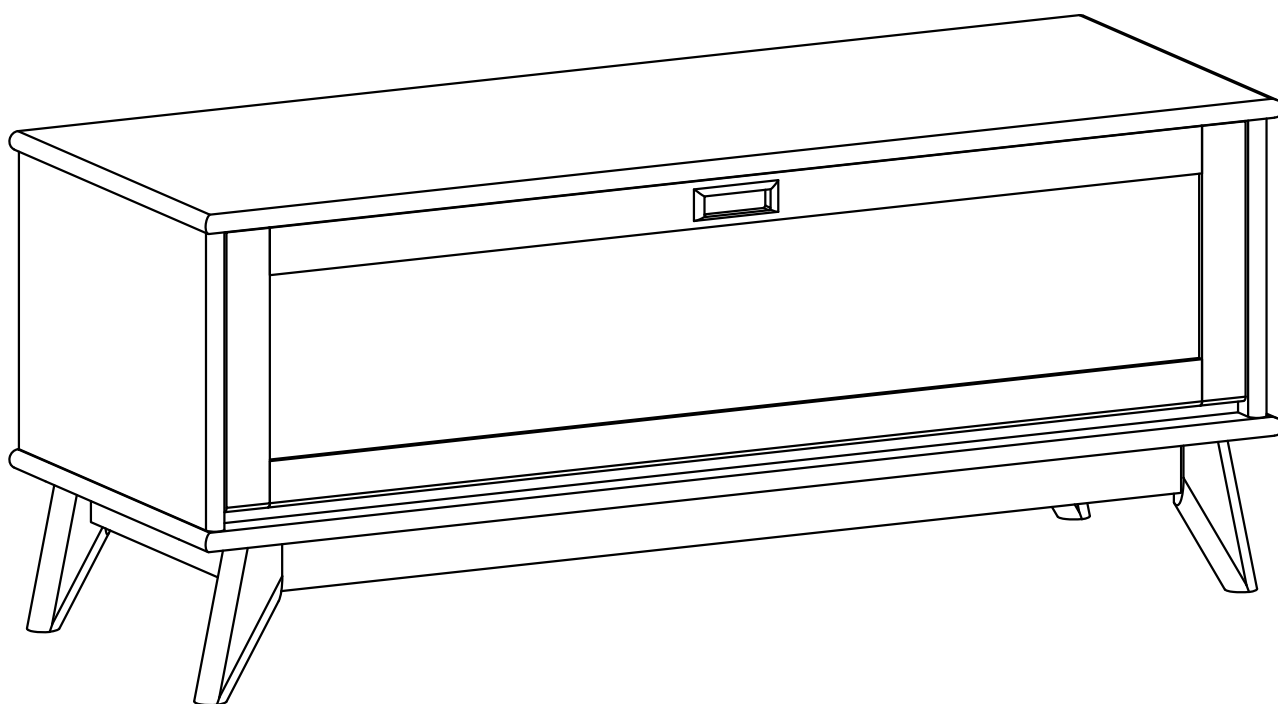
# SIMPLIHOME®

## **Draper / Tierney / Baxter**

---

44W Storage Bench with Flip Down Door and Cubbies

Model # AXCDRPSB44-XXX



# SIMPLIHOME®

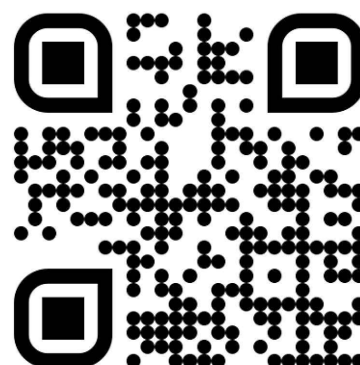
## Claim Your Free Gift

### Your opinion pays: Earn a gift!

Review your purchase and receive a gift.\* It could be a gift card, Simpli Rewards points, or another special reward.



**CLAIM YOUR REWARD NOW!**



*[simpli-home.com/get-free-gift](https://simpli-home.com/get-free-gift)*



*\*Offer valid for reviews posted within 30-days of purchase.*

# SIMPLIHOME®

## For Fastest Customer Service:



1. Open your phone's camera.
2. Point your phone's camera at the QR code to scan.
3. Click on the pop up.
4. You'll be taken to our customer service page.
5. Fill the form with your order information and issue.
6. Submit form.
7. A customer service associate will contact you.

### Other ways to contact us...



#### Email Us

customerservice@simpli-home.com



#### Visit Us

Visit our site directly at  
[www.simpli-home.com](http://www.simpli-home.com)



#### Call Us

1-866-518-0120  
Monday to Friday  
9am to 5pm EST

**\*If you've purchased from a retailer and you wish to return the product, please contact the retailer directly.**

**IMPORTANT** : Please read this manual carefully before beginning assembly of this product. Keep this manual for future reference.

## **Safety Information**

Identify all the parts and hardware. Do not discard of the packaging until you have checked that you have all of the parts and hardware required.  
Hardware package may have spare parts.

**WARNING:** This item contains small parts which can be swallowed by children and pets. Keep children and pets away during assembly. To avoid danger of suffocation, always keep plastic bags away from children and pets. We recommend that you assemble this unit on a carpeted floor to avoid scratches. If using power tools, set the tool to low torque to avoid damage.

**May require 2 people for ease of assembly.**

## Care & Maintenance

**This furniture is designed for indoor use.**

Perhaps the greatest environmental damage to wood furniture comes from wide swings in relative humidity (RH) in our homes. Wood absorbs and desorbs water as relative humidity rises and falls, and in doing so it swells and shrinks. Making matters worse, it expands and contracts unequally along different grain directions. As humidity changes, the components of wooden objects are continually pushing and pulling against each other. This pressure often results in parts of furniture no longer fitting together closely or becoming distorted or breaking from their own internal stresses.

The response to relative humidity changes begins with determining the annual average RH for your particular space. Then try to keep the RH in the space where your furniture is as close to that average as possible, generally within about 10% up or down. De-humidify in the summer and humidify in the winter.

Be aware that raising the temperature lowers the humidity and vice versa. Thus, modern heating systems, which can drive down interior RH in the winter, almost invariably cause problems for furniture. To counteract their effect, you can either modify the RH by keeping furniture containing spaces cooler in the winter or most importantly, have a good working humidifier for your home. A humidistat automatically works to balance the humidity in your home so it is constant. Dry indoor air can suck enough moisture from its surroundings to do permanent damage to wood, causing it to crack or split.

Remember, that not all woods are created equal. Two factors that help determine how rapidly a wood will lose moisture are pore size and surface hardness. A piece made from a dense and hard wood will dry less rapidly than pieces made from softer woods.

Furniture that is sealed and lacquered will lose moisture more slowly than an unfinished piece while pieces with veneer finishes are not only stronger but lose moisture more slowly than other finishes.

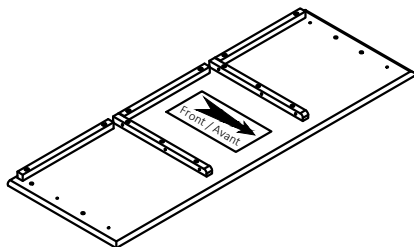
### **To help protect your wood furniture, take these steps:**

- Use a humidifier, preferably one with an automatic control system that can sense the humidity level and adjust itself accordingly
- Don't over-humidify; that can damage wood by causing it to expand and contract
- Keep furniture out of direct sunlight, which can cause it to dry out, crack and warp
- If you can avoid it, don't put furniture near heating vents; if you can't, keep the item 3 to 4 inches away from the wall, giving the heat and air space to circulate
- Dust with soft dry cloth
- Do not use liquid or aerosol products
- To avoid marking, do not place rubber on surface (foot pads, etc.)
- For soil build-up, wipe with damp cloth & dry
- Do not use abrasive cleaners

# Pre-Assembly Information

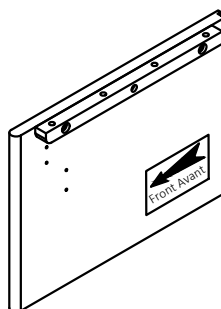
## Part Description

A



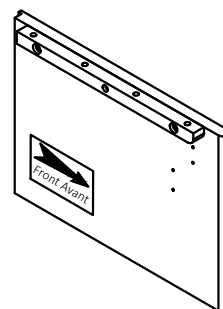
TOP  
QTY 1

BL



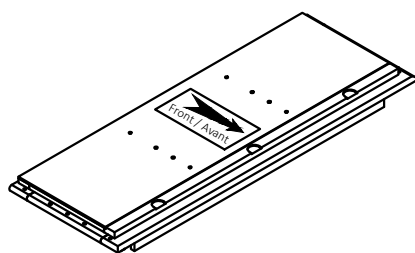
LEFT SIDE  
QTY 1

BR



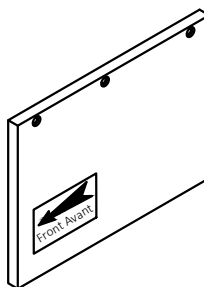
RIGHT SIDE  
QTY 1

C



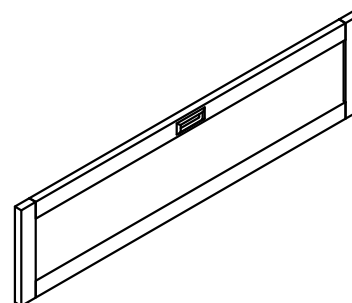
BOTTOM FRAME  
QTY 1

D



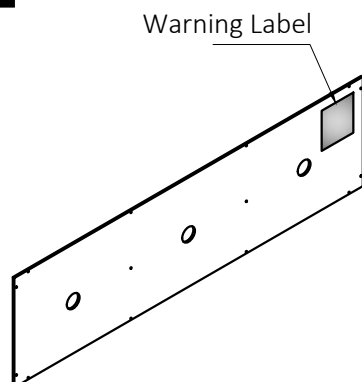
DIVIDER  
QTY 2

E



FLIP DOWN DOOR  
QTY 1

F



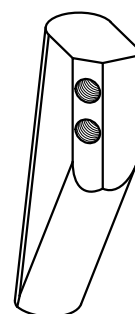
BACK PANEL  
QTY 1

G1



LEG  
QTY 2

G2

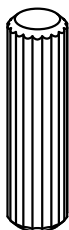


LEG  
QTY 2

# Pre-Assembly Information

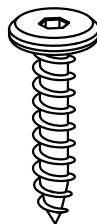
## Hardware Description

1



WOOD DOWEL  
Ø8 X 30mm  
QTY 10

2



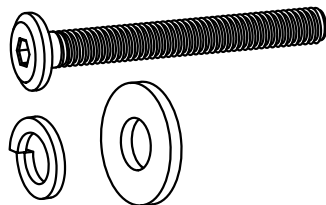
ALLEN KEY SCREW  
M6 X 30mm  
QTY 22

3



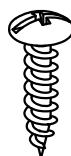
ALLEN KEY  
QTY 1

4



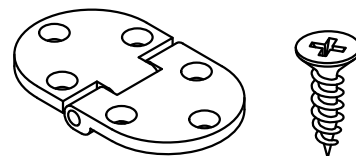
ALLEN KEY BOLT: M8X60-QTY 8  
LOCK WASHER: Ø12/Ø8x1.5-QTY 8  
WASHER: Ø19/Ø8X1-QTY 8  
QTY 8 SETS

5



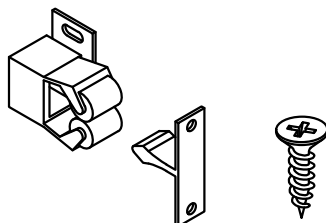
PHILLIPS SCREW ROUND HEAD  
M4 X 15mm  
QTY 14

6



HINGE - QTY 3  
PHILLIPS SCREW: M3.5 X 15mm - QTY 18  
QTY 3 SETS

7

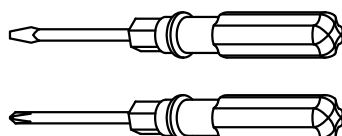
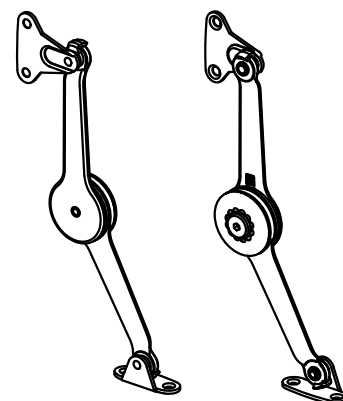


LATCH - QTY 2  
PHILLIPS SCREW: M3 X 12mm - QTY 8  
QTY 2 SETS

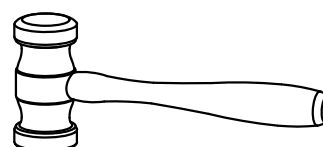
8



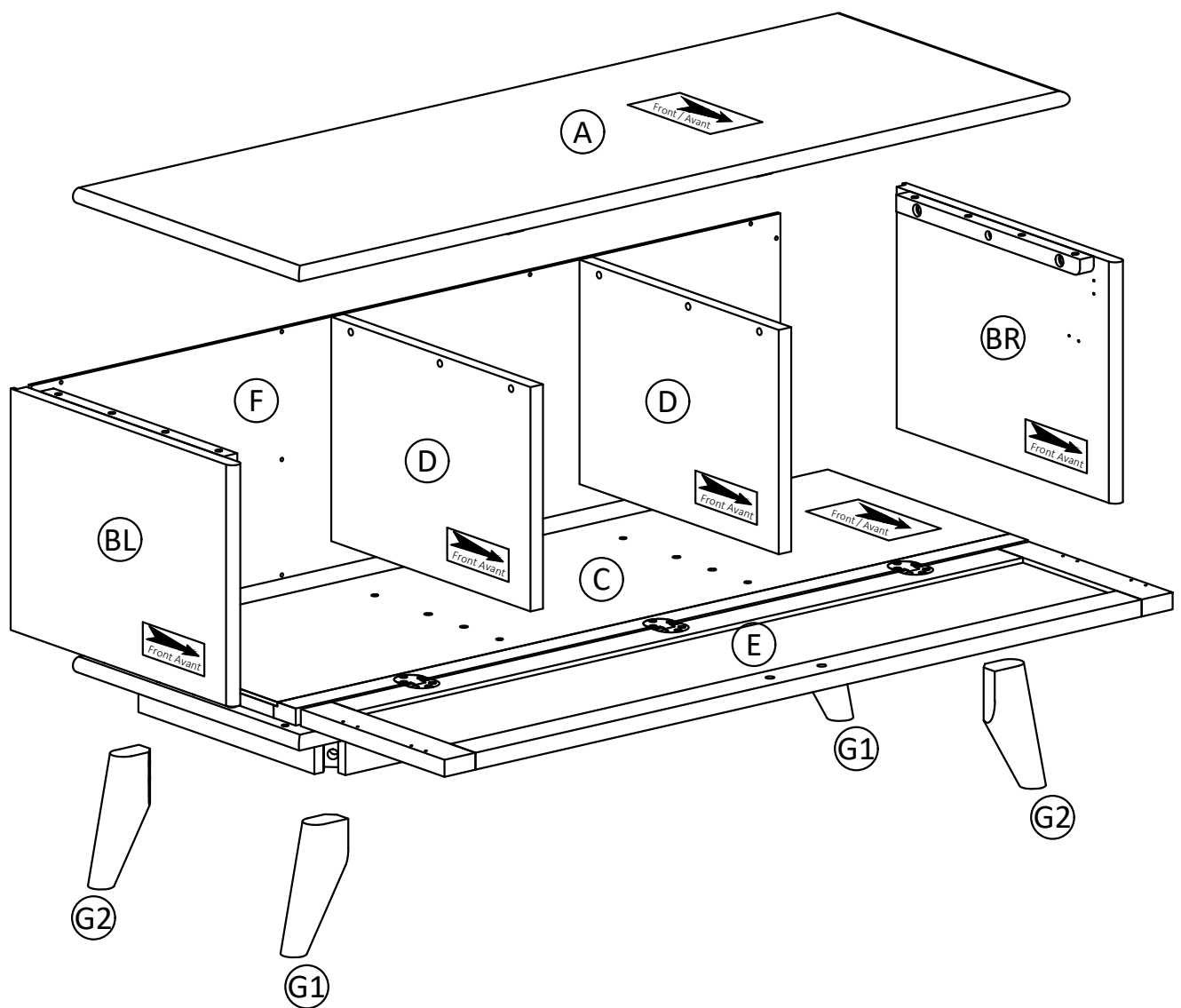
LID SUPPORT (Left + Right) - QTY 1 SET  
PHILLIPS SCREW: M4 X 15mm - QTY 8  
QTY 1 SET



Required -  
Flathead screwdriver  
Phillips screwdriver  
Rubber mallet  
**Not Included**



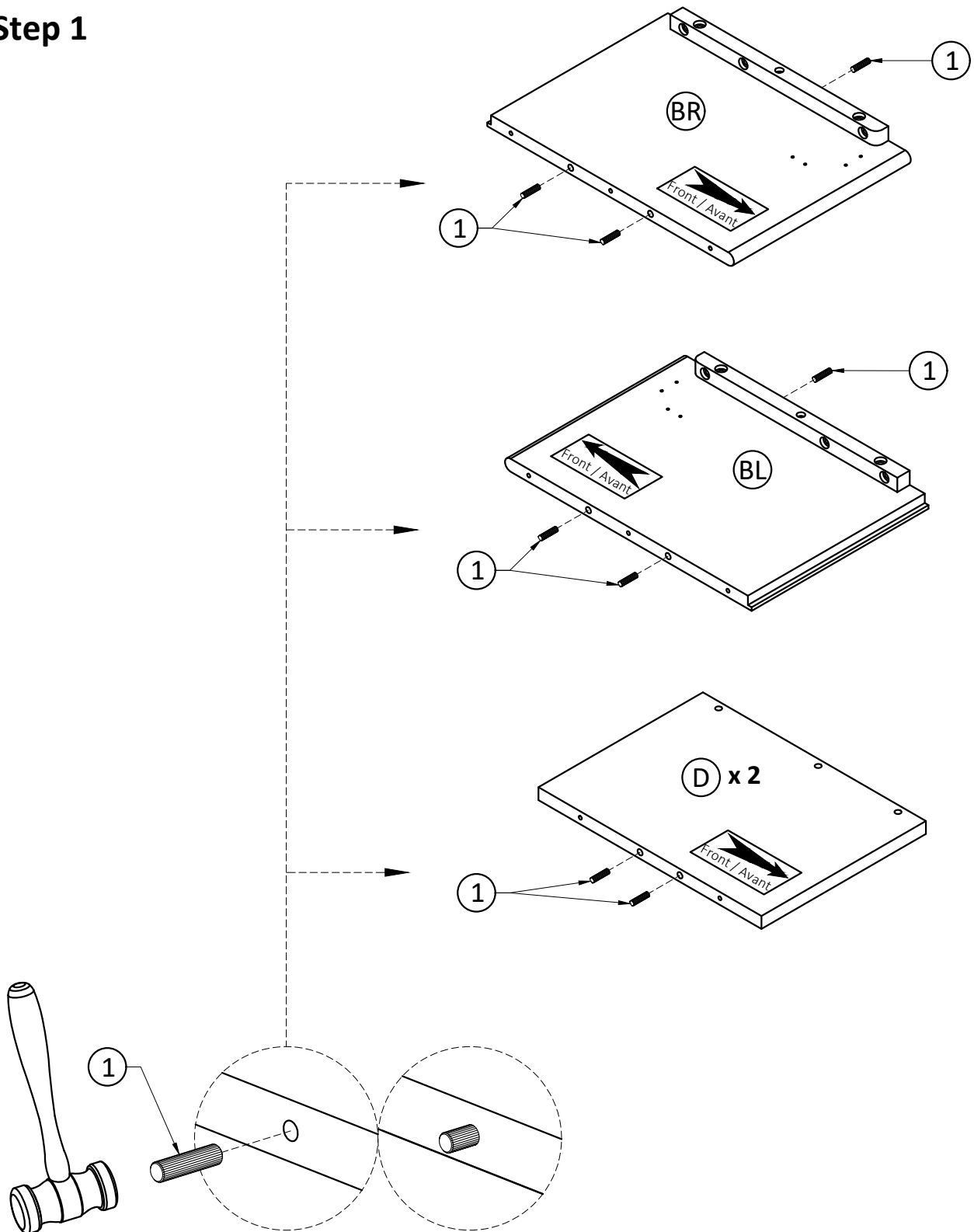
## Components - Key Diagram





# Assembly

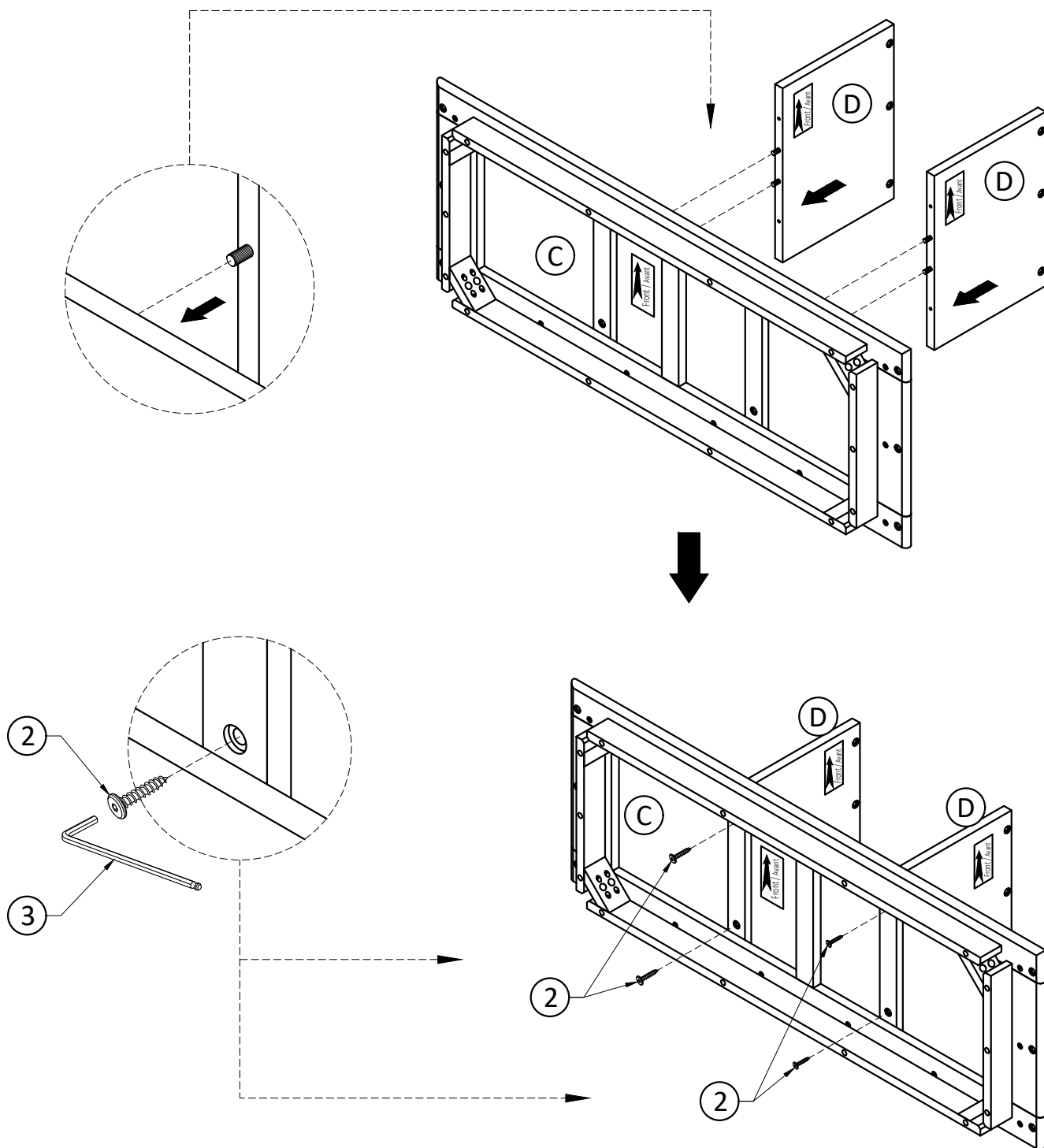
## Step 1



1. Insert Wood Dowels ① into guide holes on Sides (BL), (BR) and Dividers (D).
2. Use rubber mallet to tap Wood Dowels ① into bottom of holes securely.  
1/3 length of Dowels should be exposed.

# Assembly

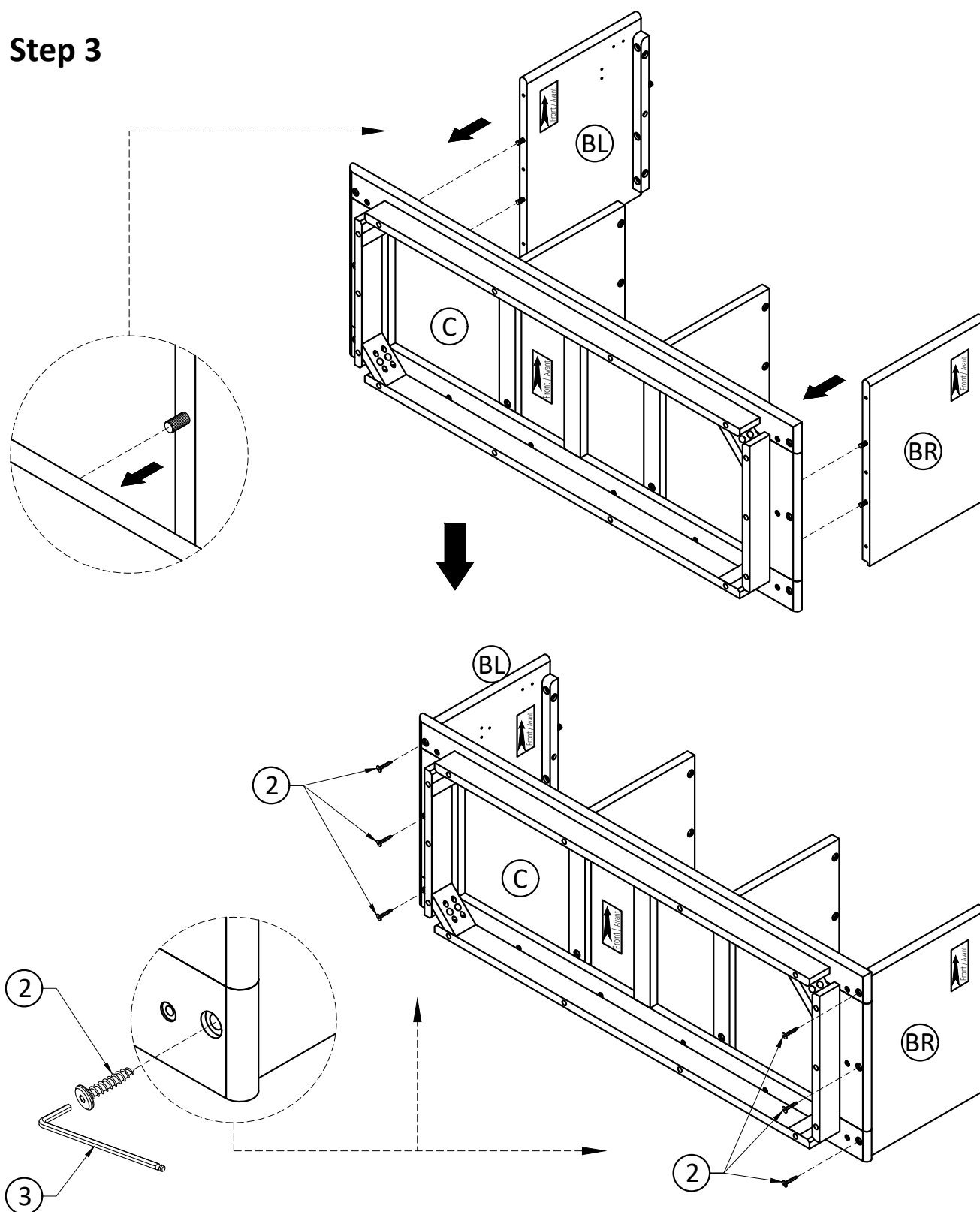
## Step 2



1. Align Wood Dowels with guide holes on Bottom Frame (C) and attach Dividers (D) to Bottom Frame (C).
2. Use four Allen Key Screws (2) to attach Bottom Frame (C) to Dividers (D) through guide holes.
3. Use Allen Key (3) to tighten Allen key Screws. Do not over-tighten.

# Assembly

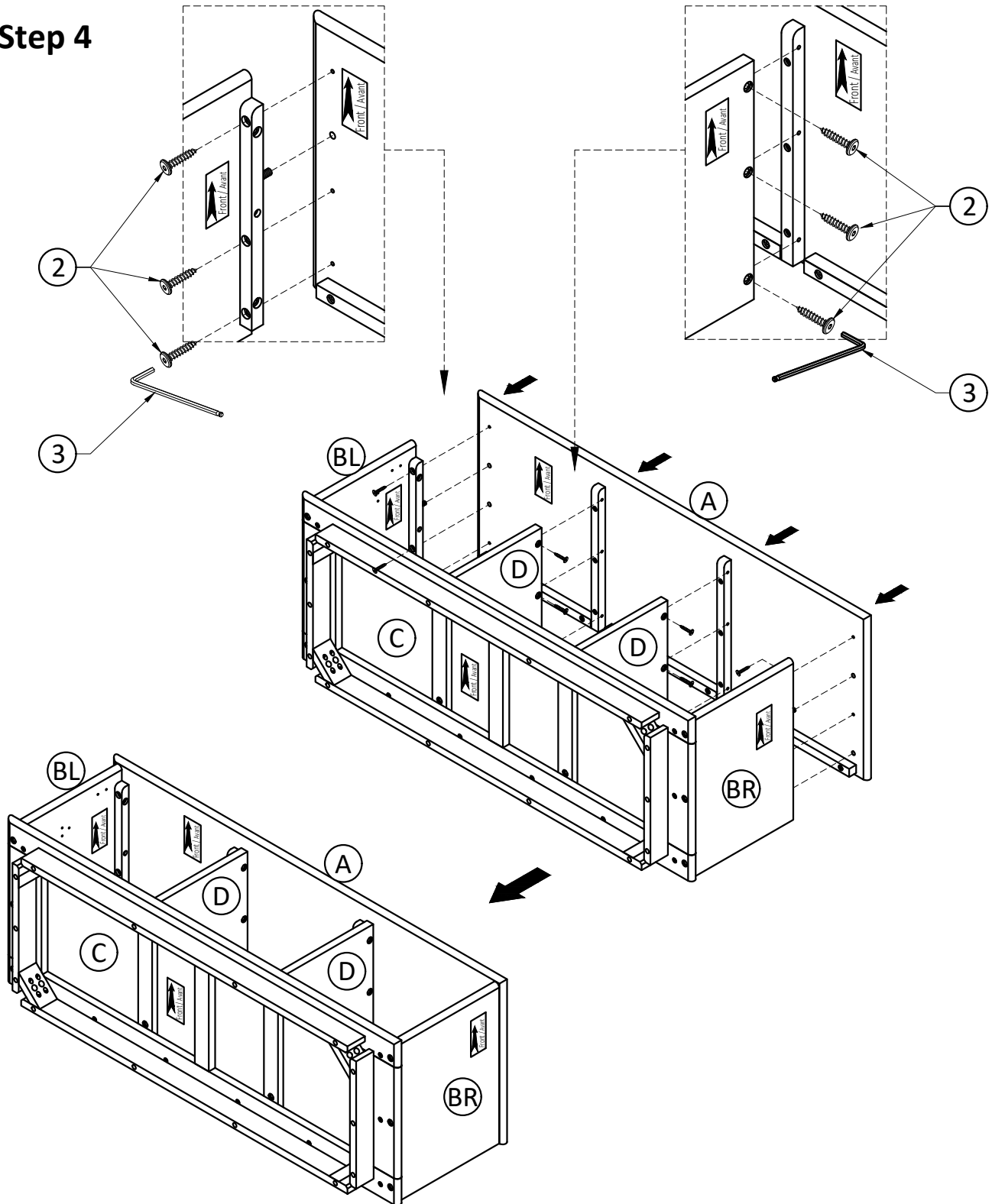
## Step 3



1. Align Wood Dowels with guide holes on Bottom Frame (C) and attach Sides (BL, BR) to Bottom Frame (C).
2. Use six Allen Key Screws (2) to attach Bottom Frame (C) to Sides (BL, BR) through guide holes.
3. Use Allen Key (3) to tighten Allen key Screws. Do not over-tighten.

# Assembly

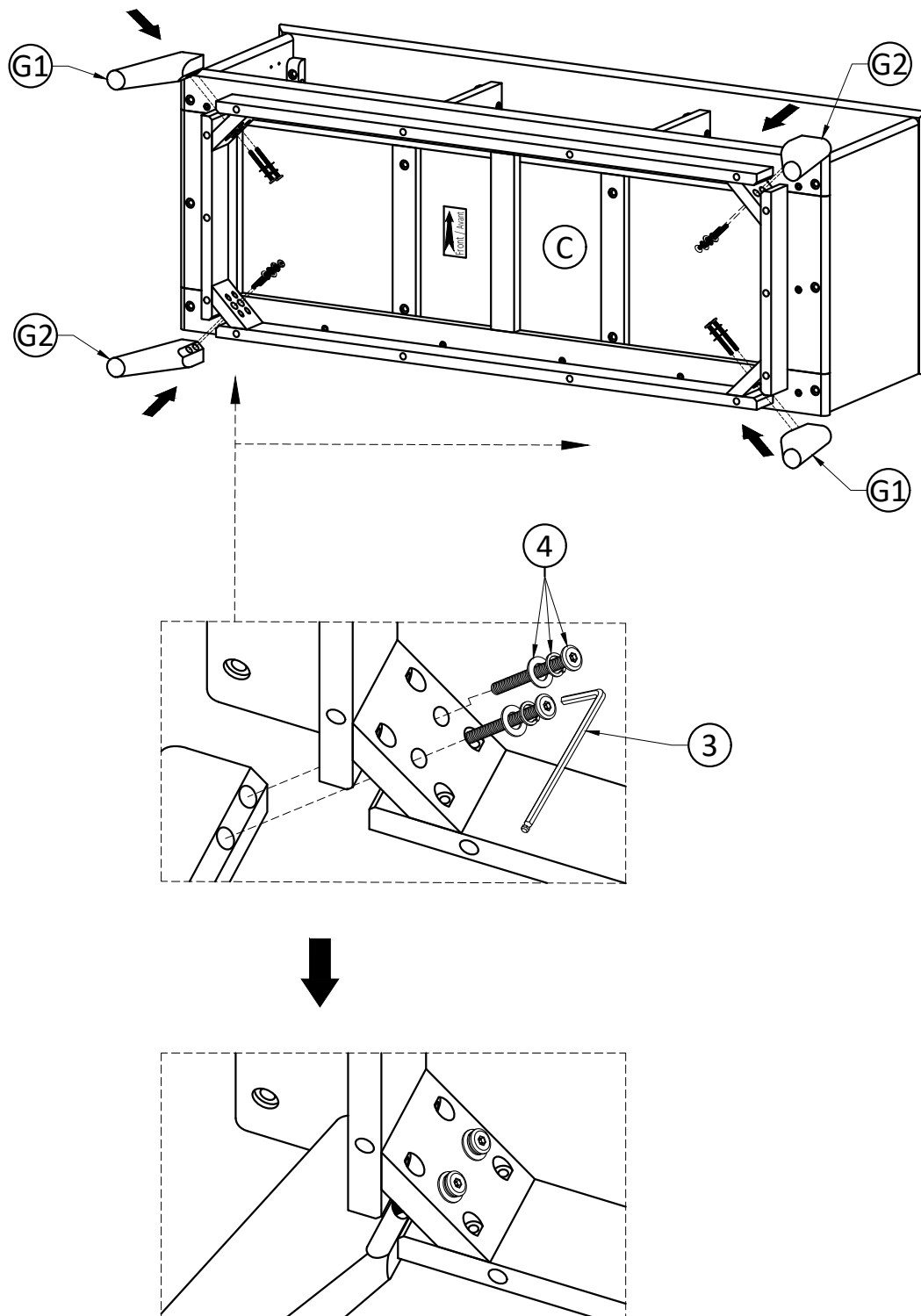
## Step 4



1. Align Wood Dowels with guide holes on Top (A) and attach Sides (BL), (BR) to Top (A).
2. Use three Allen Key Screws (2) to attach each Side (BL), (BR) to Top (A) through guide holes.
3. Use three Allen Key Screws (2) to attach each Divider (D) to Top (A) through guide holes.
4. Use Allen Key (3) to tighten Allen key Screws. Do not over-tighten.

# Assembly

## Step 5



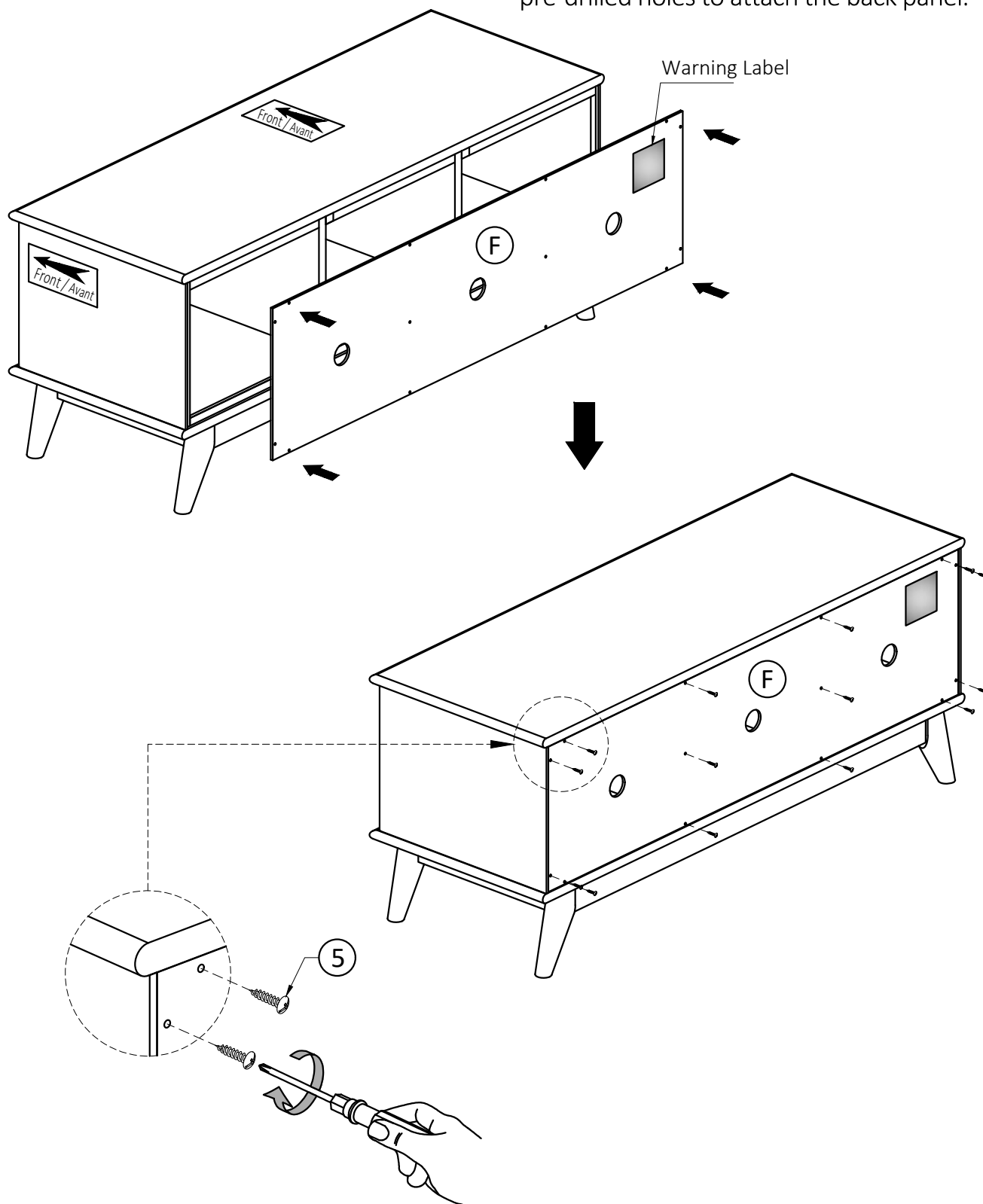
1. Attach Legs (G1), (G2) to Bottom Frame (C).
2. Use eight sets Allen Key Bolts, Lock Washers and Washers (4) to secure Bottom Frame (C) and Legs (G1), (G2) (two sets on each Leg).
3. Use Allen Key (3) to tighten Allen Key Bolts. Do not over-tighten.

# Assembly

## Step 6

Note:

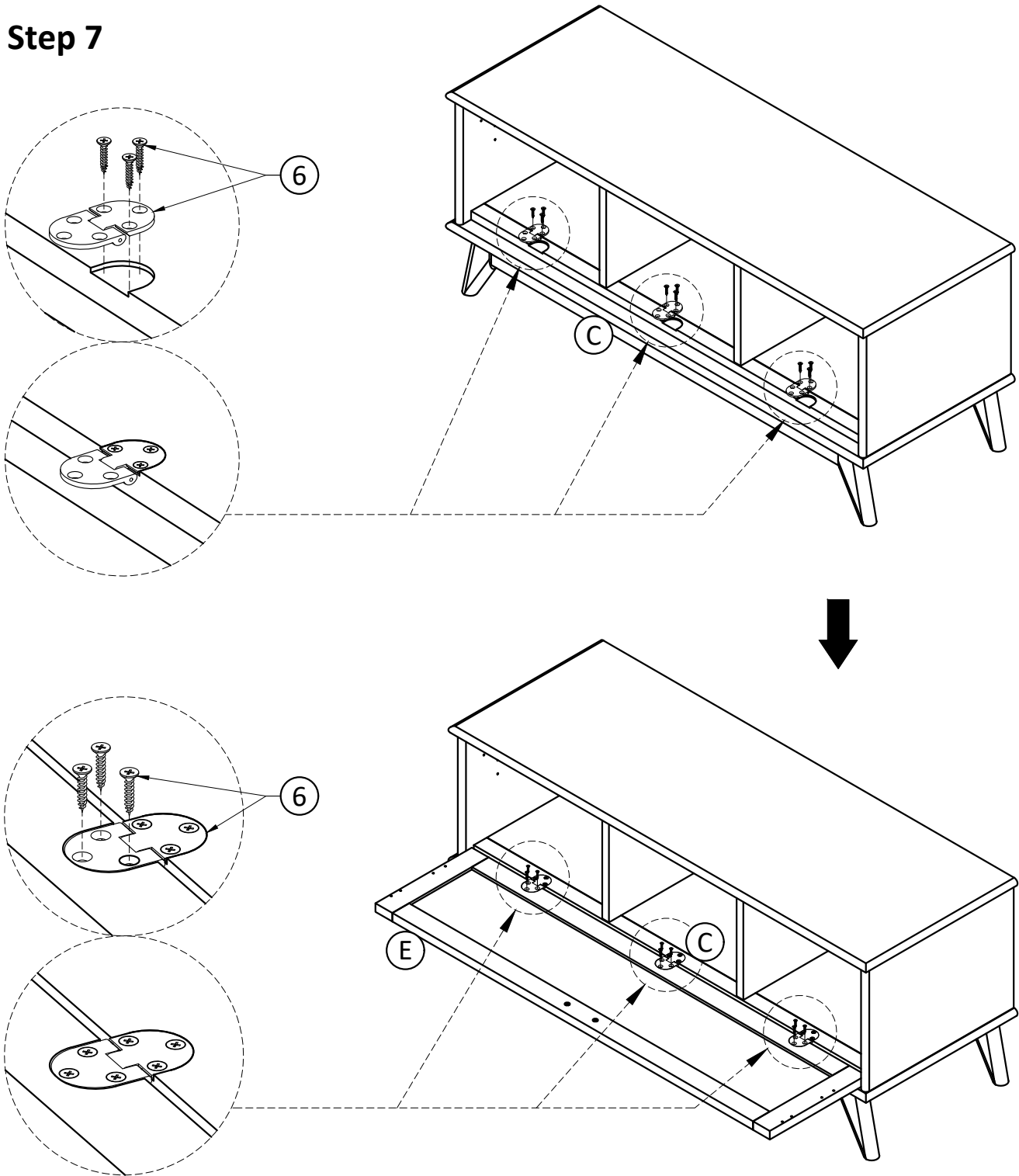
The back of the cabinet frame does not have pre-drilled holes to attach the back panel.



1. Use Phillips Screws Round Head ⑤ to attach Back Panel ⑥ through guide holes from Back Panel to the back of Bench.
2. Use Phillips screwdriver to tighten screws. Do not over-tighten.

# Assembly

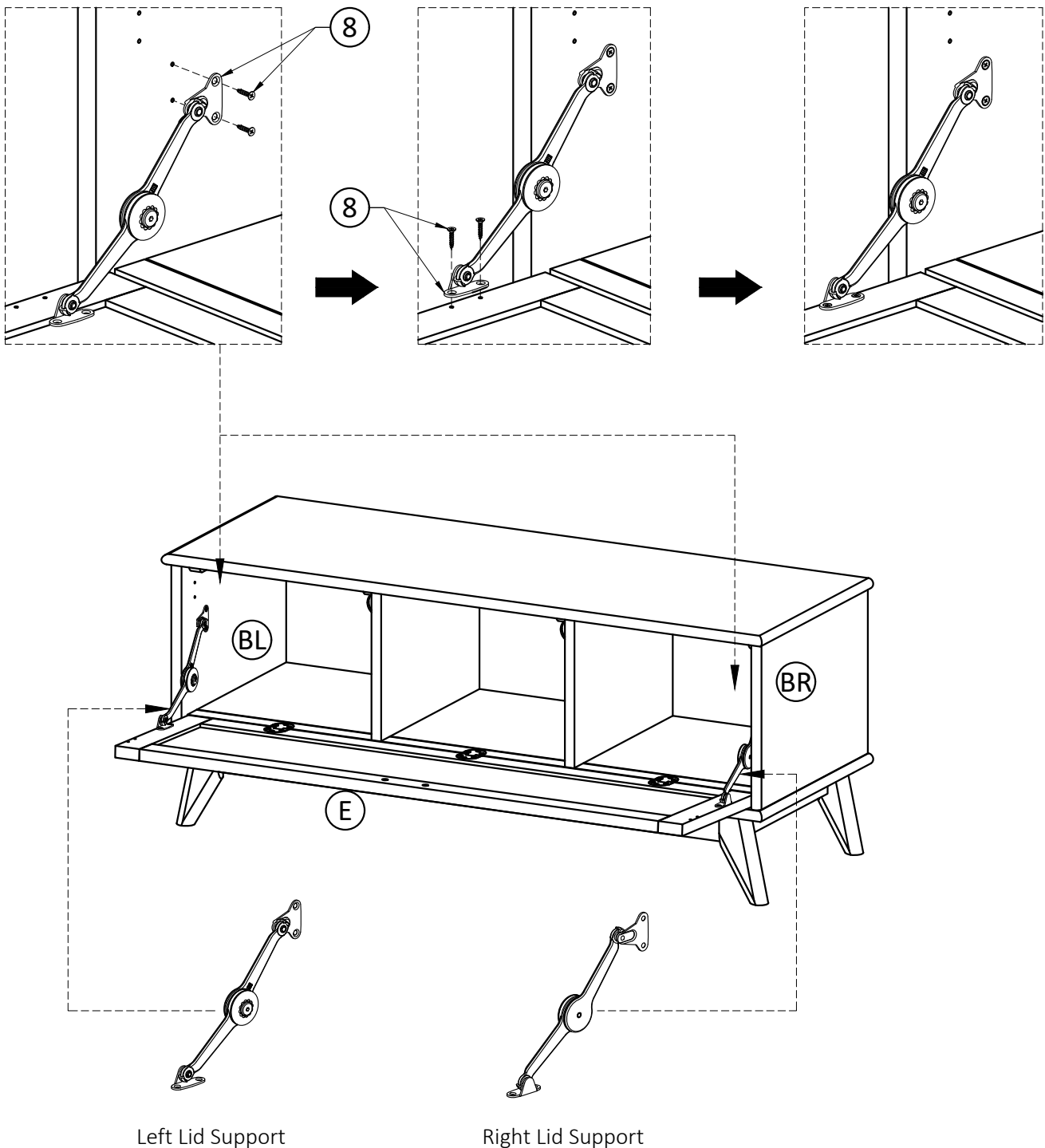
## Step 7



1. Attach Hinges (6) to Flip Down Door (E) using Phillips Screws (6) into pre-drilled holes on Flip Down Door (E).
2. Attach Hinges on Flip Down Door (E) to Bottom Frame (C) using Phillips Screws (6) into pre-drilled holes on Flip Down Door (E).
3. Use Phillips screwdriver to snugly tighten screws.

# Assembly

## Step 8

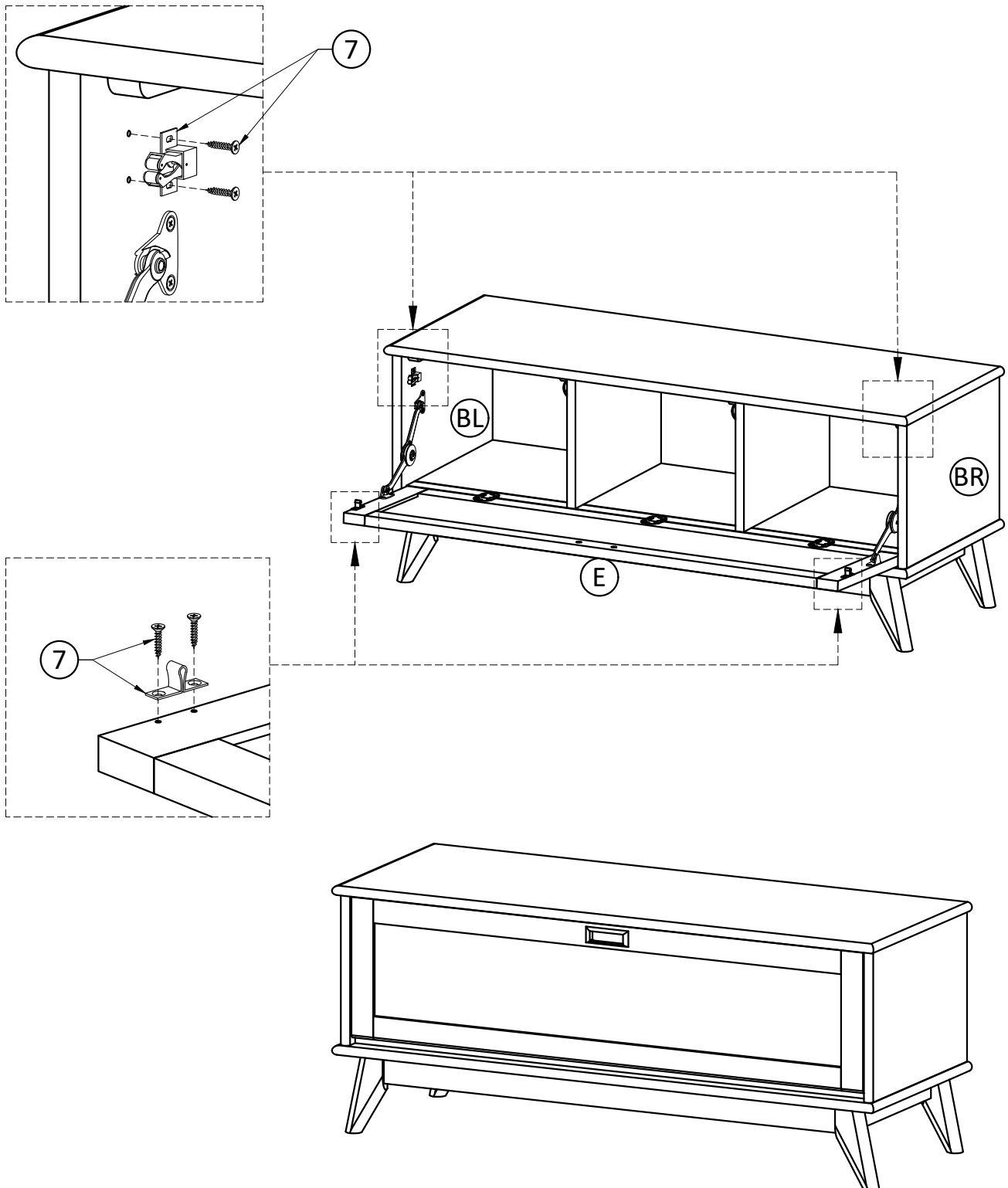


1. Attach Left Lid Support (8) into pre-drilled holes of Left Side (BL) and Flip Down Door (E) using Phillips Screws (8).
2. Attach Right Lid Support (8) into pre-drilled holes of Right Side (BR) and Flip Down Door (E) using Phillips Screws (8).
3. Use phillips screwdriver to tighten Screws. Do not over-tighten.



# Assembly

## Step 9



1. Attach Latch (7) to Sides (BL), (BR) and Flip Down Door (E) using Phillips Screws (7) into pre-drilled holes on Sides (BL), (BR) and Flip Down Door (E).
2. Use Phillips screwdriver to snugly tighten screw.