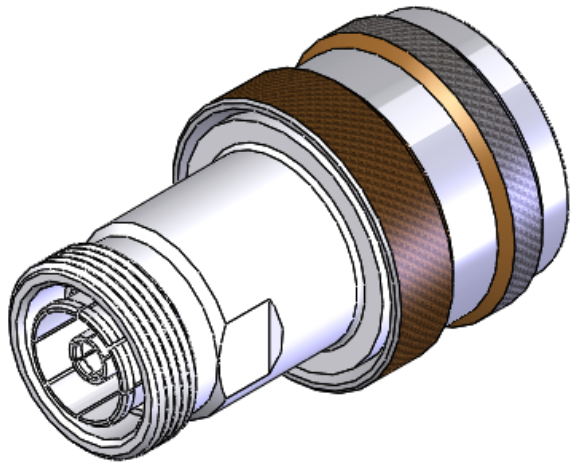


This document, including the design, configuration and mechanical features revealed herein are the sole, confidential and proprietary property of TRU Corporation. Reproduction or use thereof, in whole or part, is prohibited without the prior written consent of TRU Corporation.

REV.	DESCRIPTION	DATE	APPROVED
-	ORIGINAL ISSUE	02/14/11	TRC



ISOMETRIC VIEW  
SCALE 1:1

ENGINEERING DATA:

ELECTRICAL:  
IMPEDANCE: 50 OHMS NOMINAL

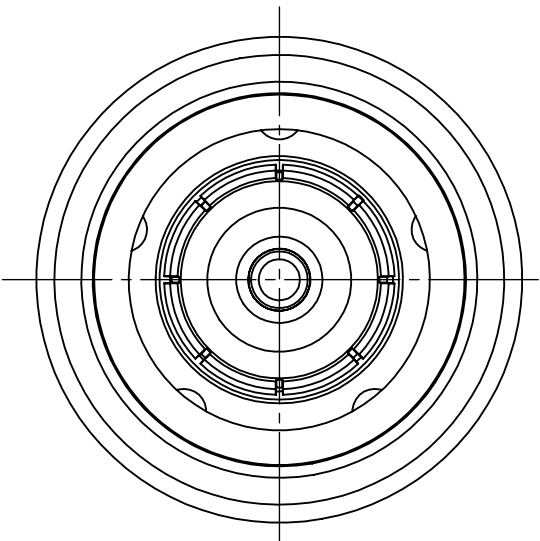
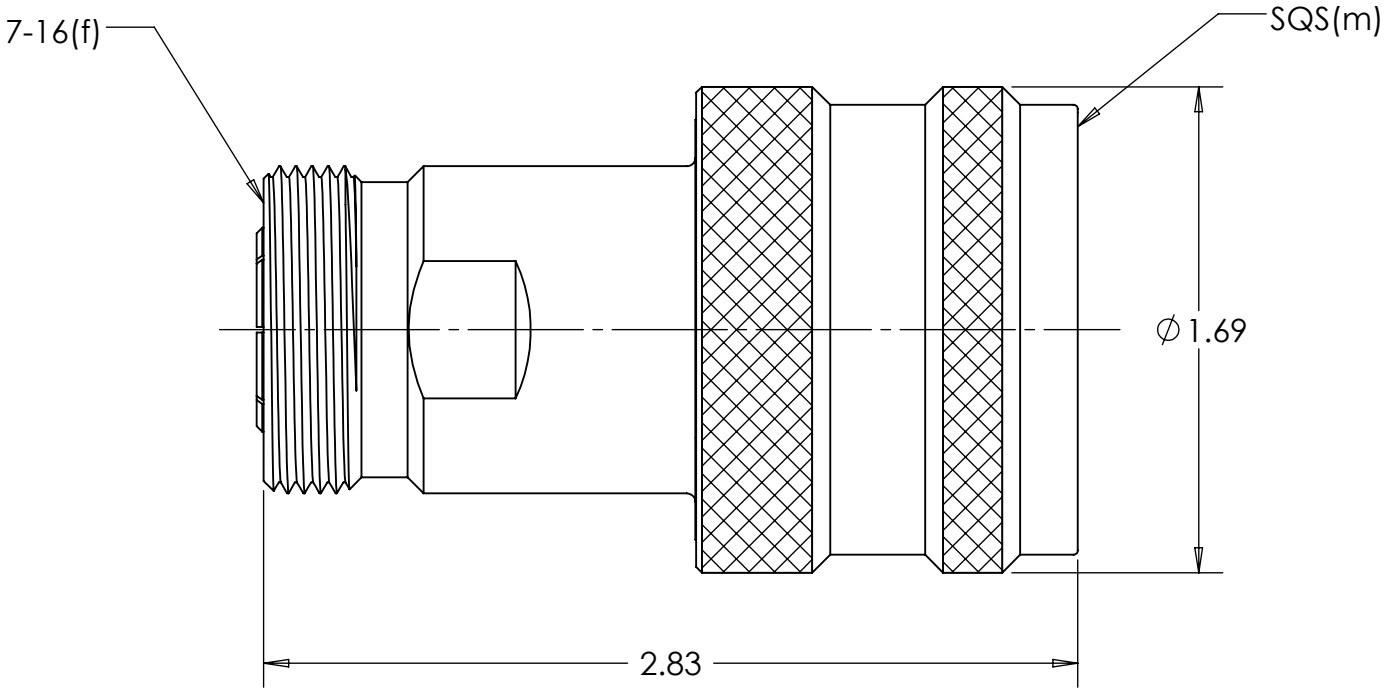
MECHANICAL:  
INTERFACE: 7-16(f) PER TRU SPEC  
SQS(m) PER TRU SPEC


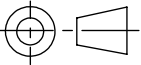
MATERIAL:  
INSULATOR: PTFE (TEFLON) PER ASTM-D1710, I1A  
FEMALE CONTACT: BERYLLIUM COPPER C17300, TD04 (H) PER ASTM-B196  
MALE CONTACT: BRASS C36000, H02 PER ASTM-B16  
BODY: BRASS C36000, H02 PER ASTM-B16  
O-RING: SILICONE RUBBER PER A-A-59588 A

FINISH:  
CONTACTS: SILVER PLATED  
BODY: NICKEL PLATED

NOTES:  
1. UNLESS OTHERWISE SPECIFIED; ALL  
DIMENSIONS ARE REFERENCE ONLY.

2. PRODUCT COMPLIES WITH ROHS DIRECTIVE 2002/95/EC.



MATERIAL	DO NOT SCALE DRAWING	DRAWN TRC	DATE 02/11/11	 <b>TRU CORPORATION</b> 245 LYNNFIELD STREET, PEABODY, MA 01960 The Custom Interconnect Leader™
		ENG APPR. TRC	DATE 02/14/11	
		MFG APPR.	DATE	
		OTHER APPR. AM	DATE 02/14/11	
COMMENTS:	UNLESS OTHERWISE SPECIFIED: DIMENSIONS ARE IN INCHES  TOLERANCES: FRACTIONS: ±1/64 .XX : ±.01 .XXX: ±.005 ANGLES: ±1/2° MACHINED SURFACES:  63/√	THIRD ANGLE PROJECTION 		TITLE: CONNECTOR, COAXIAL, RF 7-16(f) to SQS(m) ADAPTER, STRAIGHT
		SIZE <b>B</b>	DWG. NO. TRU-11617	REV -
surface area: sq inch	weight: lbs	CAGE CODE: 92180		SCALE: 1.5:1
				SHEET 1 OF 1